

**DATE DESPRE IMOBILUL NR. 2031**

Oficiul de Cadastru și Publicitate Imobiliară SIBIU
Biroul de Cadastru și Publicitate Imobiliară Agnita

A. Partea I. Descrierea imobilului

TEREN Extravilan

Adresa: Jud. Sibiu

Nr. Crt	Nr cadastral Nr. topografic	Suprafața* (mp)	Observații / Referințe
A1	101578	19.900	Sector cadastral:73 Teren neimprejmuit;

B. Partea II. Proprietari și acte

Inscrieri privitoare la dreptul de proprietate și alte drepturi reale		Referințe
10700 / 11/10/2017		
Act Administrativ nr. TP nr. 97, din 13/03/2002 emis de CJSIPT Sibiu (documentatie cadastrala receptionata de OCPI Sibiu);		
B1	Intabulare, drept de PROPRIETATE- potrivit L. 18/1991, L. 169/1997 si L. 1/2000, dobandit prin Lege, cota actuala 1/1 1) COMUNA BRUIU , CIF:4480270	A1

C. Partea III. SARCINI .

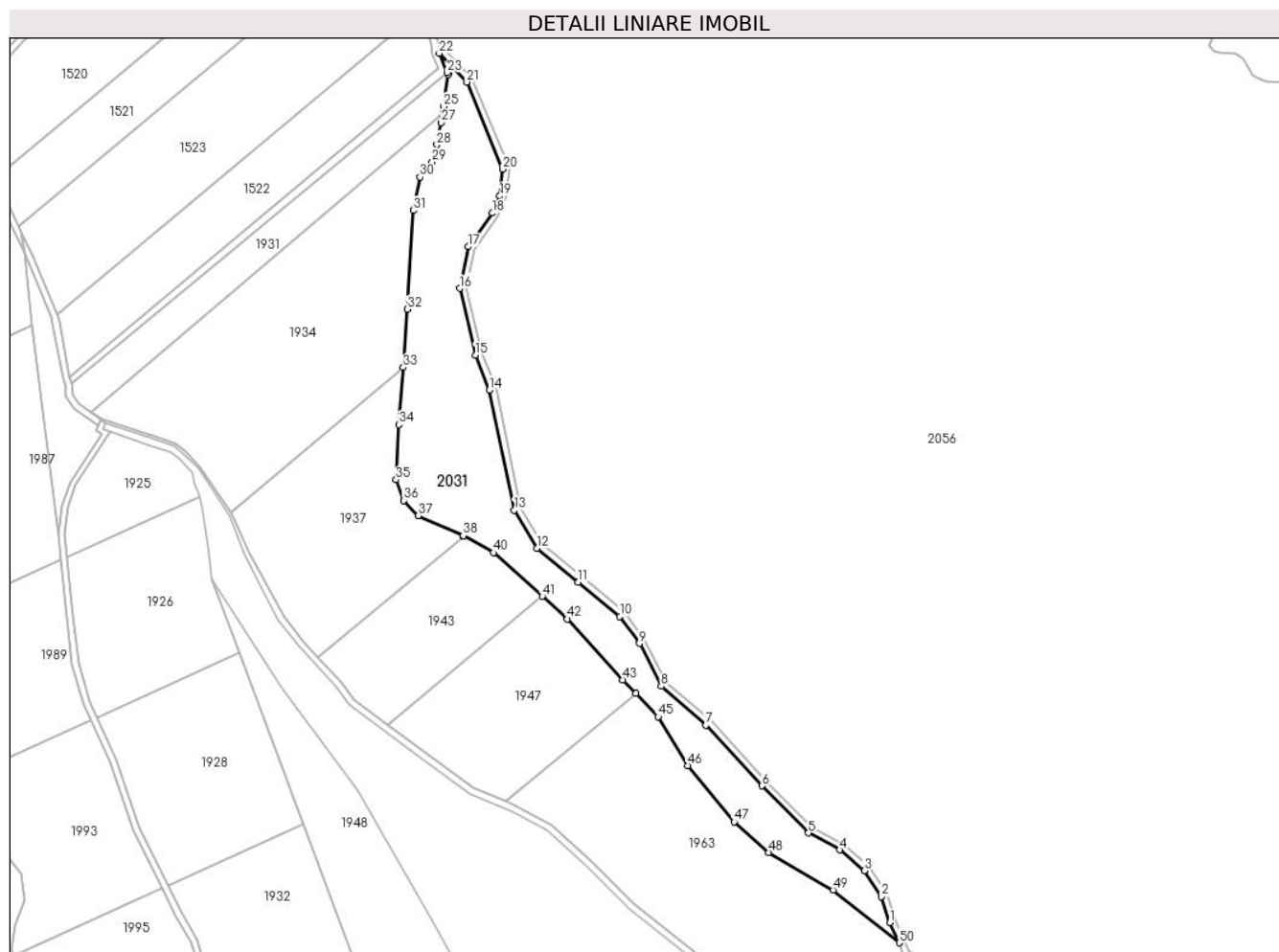
Inscrieri privind dezmembramintele dreptului de proprietate, drepturi reale de garanție și sarcini	Referințe
NU SUNT	

Anexa Nr. 1 La Partea I

Teren

Nr cadastral	Suprafața (mp)*	Observații / Referințe
101578	19.900	

* Suprafața este determinată în planul de proiecție Stereo 70.



Date referitoare la teren

Crt	Categorie folosință	Intravilan	Suprafața (mp)	Tarla	Parcelă	Nr. topo	Observații / Referințe
1	padure	NU	19.900	112	3388	-	

Lungime Segmente

1) Valorile lungimilor segmentelor sunt obținute din proiecție în plan.

Punct început	X / Y	Punct sfârșit	X / Y	Lungime segment	Punct început	X / Y	Punct sfârșit	X / Y	Lungime segment	Punct început	X / Y	Punct sfârșit	X / Y	Lungime segment
1	477.907,747 483.067,703	2	477.902,723 483.083,724	16.79 1	2	477.902,723 483.083,724	3	477.892,2 483.099,597	19.04 3	3	477.892,2 483.099,597	4	477.877,264 483.112,242	19.57 1
4	477.877,264 483.112,242	5	477.857,974 483.122,534	21.86 4	5	477.857,974 483.122,534	6	477.829,644 483.151,299	40.37 3	6	477.829,644 483.151,299	7	477.795,407 483.188,24	50.36 7
7	477.795,407 483.188,24	8	477.768,206 483.212,027	36.13 5	8	477.768,206 483.212,027	9	477.754,797 483.238,198	29.40 6	9	477.754,797 483.238,198	10	477.742,856 483.254,605	20.29 2
10	477.742,856 483.254,605	11	477.717,349 483.275,634	33.05 8	11	477.717,349 483.275,634	12	477.692,174 483.296,389	32.62 7	12	477.692,174 483.296,389	13	477.678,357 483.319,629	27.03 8
13	477.678,357 483.319,629	14	477.663,219 483.392,902	74.82	14	477.663,219 483.392,902	15	477.654,624 483.414,233	22.99 7	15	477.654,624 483.414,233	16	477.645,04 483.455,0	41.87 9
16	477.645,04 483.455,0	17	477.650,231 483.480,379	25.90 4	17	477.650,231 483.480,379	18	477.664,835 483.500,973	25.24 7	18	477.664,835 483.500,973	19	477.669,566 483.511,308	11.36 6

Punct început	X / Y	Punct sfârșit	X / Y	Lungime segment	Punct început	X / Y	Punct sfârșit	X / Y	Lungime segment	Punct început	X / Y	Punct sfârșit	X / Y	Lungime segment
19	477.669,566 483.511,308	20	477.671,273 483.527,77	16.55	20	477.671,273 483.527,77	21	477.649,349 483.580,908	57.48 4	21	477.649,349 483.580,908	22	477.632,427 483.598,506	24.41 4
22	477.632,427 483.598,506	23	477.637,448 483.586,736	12.79 6	23	477.637,448 483.586,736	24	477.637,94 483.585,583	1.254	24	477.637,94 483.585,583	25	477.635,149 483.565,965	19.81 5
25	477.635,149 483.565,965	26	477.634,535 483.561,65	4.358	26	477.634,535 483.561,65	27	477.633,763 483.556,225	5.48	27	477.633,763 483.556,225	28	477.631,082 483.542,711	13.77 7
28	477.631,082 483.542,711	29	477.628,197 483.532,135	10.96 2	29	477.628,197 483.532,135	30	477.620,765 483.522,841	11.90 1	30	477.620,765 483.522,841	31	477.616,691 483.502,532	20.71 4
31	477.616,691 483.502,532	32	477.613,066 483.442,19	60.45	32	477.613,066 483.442,19	33	477.610,471 483.406,632	35.65 2	33	477.610,471 483.406,632	34	477.607,928 483.371,778	34.94 7
34	477.607,928 483.371,778	35	477.606,181 483.338,095	33.72 8	35	477.606,181 483.338,095	36	477.610,779 483.325,515	13.39 4	36	477.610,779 483.325,515	37	477.619,684 483.316,231	12.86 5
37	477.619,684 483.316,231	38	477.647,103 483.303,923	30.05 5	38	477.647,103 483.303,923	39	477.647,427 483.303,743	0.37	39	477.647,427 483.303,743	40	477.665,597 483.293,623	20.79 9
40	477.665,597 483.293,623	41	477.695,381 483.266,961	39.97 4	41	477.695,381 483.266,961	42	477.710,802 483.253,156	20.69 7	42	477.710,802 483.253,156	43	477.744,441 483.216,027	50.10 1
43	477.744,441 483.216,027	44	477.752,483 483.207,707	11.57 1	44	477.752,483 483.207,707	45	477.766,209 483.193,506	19.75 1	45	477.766,209 483.193,506	46	477.784,324 483.163,668	34.90 6
46	477.784,324 483.163,668	47	477.812,583 483.129,224	44.55 3	47	477.812,583 483.129,224	48	477.833,569 483.110,649	28.02 6	48	477.833,569 483.110,649	49	477.873,093 483.087,701	45.70 3
49	477.873,093 483.087,701	50	477.913,495 483.055,497	51.66 6	50	477.913,495 483.055,497	1	477.907,747 483.067,703	13.49 2					

** Lungimile segmentelor sunt determinate în planul de proiecție Stereo 70 și sunt rotunjite la 1 milimetru.

*** Distanța dintre puncte este formată din segmente cumulate ce sunt mai mici decât valoarea 1 milimetru.

**DATE DESPRE IMOBILUL NR. 2034**

Oficiul de Cadastru și Publicitate Imobiliară SIBIU
Biroul de Cadastru și Publicitate Imobiliară Agnita

A. Partea I. Descrierea imobilului

TEREN Extravilan

Adresa: Jud. Sibiu

Nr. Crt	Nr cadastral Nr. topografic	Suprafața* (mp)	Observații / Referințe
A1		3.400	Sector cadastral:73 Teren neimprejmuit;

B. Partea II. Proprietari și acte

Inscrieri privitoare la dreptul de proprietate și alte drepturi reale	Referințe
/	
Act Normativ nr. Legea 7, din 13/03/1997 emis de PARLAMENTUL ROMANIEI (CONFORM ART. 13 ALIN. 15);	
B1	Inscrierea provizorie, drept de PROPRIETATE, dobandit prin Lege, cota actuala 1/1
	1) COMUNA BRUIU , CIF:4480270, Proprietar neidentificat

C. Partea III. SARCINI .

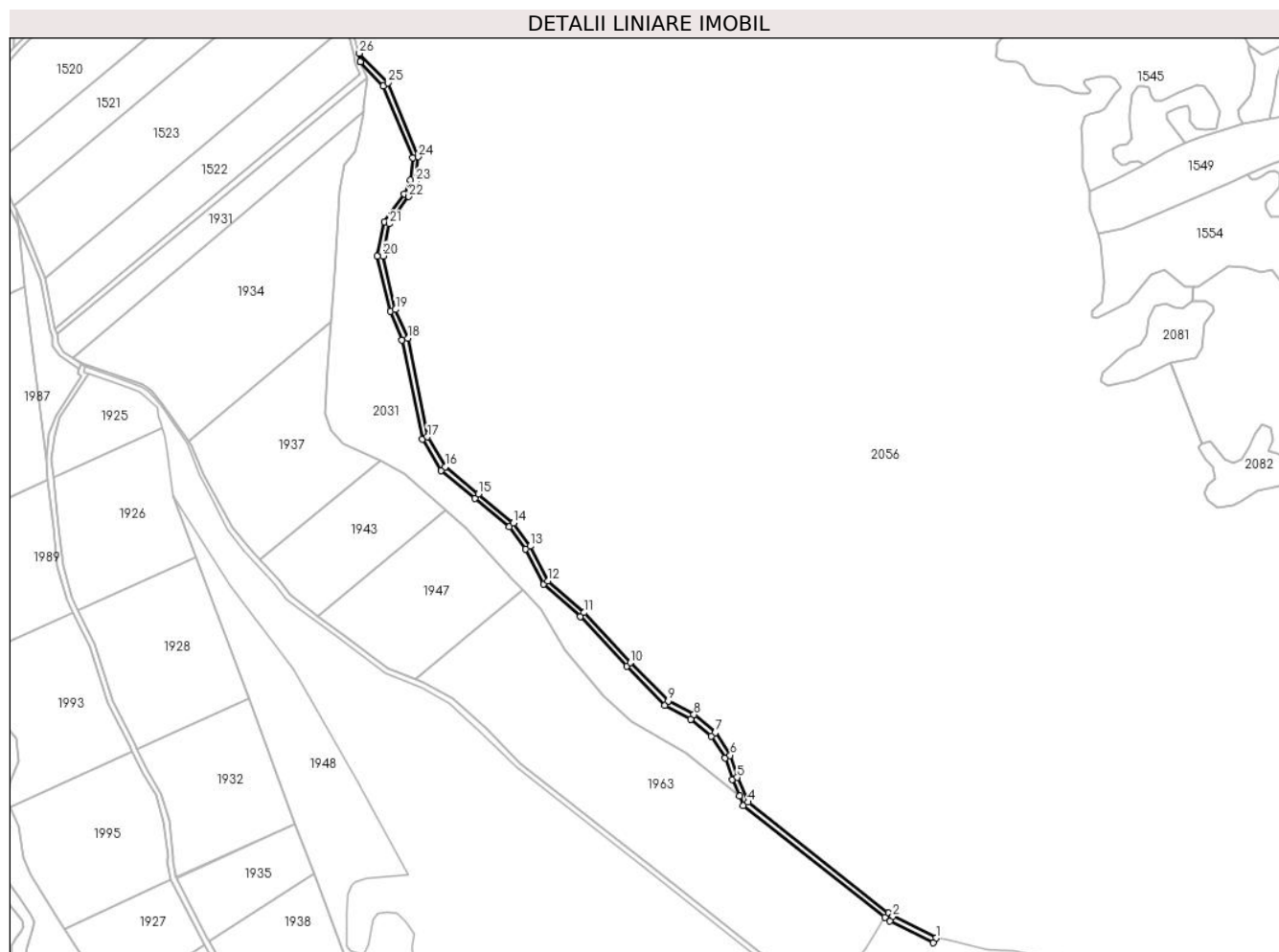
Inscrieri privind dezmembramintele dreptului de proprietate, drepturi reale de garanție și sarcini	Referințe
NU SUNT	

Anexa Nr. 1 La Partea I

Teren

Nr cadastral	Suprafața (mp)*	Observații / Referințe
	3.400	

* Suprafața este determinată în planul de proiecție Stereo 70.



Date referitoare la teren

Crt	Categorie folosință	Intravilan	Suprafața (mp)	Tarla	Parcelă	Nr. topo	Observații / Referințe
1	drum	NU	3.400	112	3387	-	

Lungime Segmente

1) Valorile lungimilor segmentelor sunt obținute din proiecție în plan.

Punct început	X / Y	Punct sfârșit	X / Y	Lungime segment
1	478.058,69 482.950,307	2	478.026,767 482.966,312	35.71
4	477.919,346 483.050,891	5	477.911,482 483.069,16	19.89
7	477.895,22 483.102,282	8	477.879,523 483.115,57	20.56
10	477.832,536 483.154,062	11	477.798,198 483.191,113	50.51
13	477.758,214 483.240,299	14	477.745,792 483.257,369	21.11
16	477.695,257 483.299,032	17	477.682,139 483.321,096	25.66
2	478.026,767 482.966,312	3	478.023,561 482.968,868	4.101
5	477.911,482 483.069,16	6	477.906,37 483.085,462	17.08
8	477.879,523 483.115,57	9	477.860,395 483.125,776	21.68
11	477.798,198 483.191,113	12	477.771,416 483.214,534	35.57
14	477.745,792 483.257,369	15	477.719,806 483.278,792	33.67
17	477.682,139 483.321,096	18	477.667,624 483.394,137	74.46
3	478.023,561 482.968,868	4	477.919,346 483.050,891	132.6
6	477.906,37 483.085,462	7	477.895,22 483.102,282	22
9	477.860,395 483.125,776	10	477.832,536 483.154,062	20.18
12	477.771,416 483.214,534	13	477.758,214 483.240,299	39.70
15	477.719,806 483.278,792	16	477.695,257 483.299,032	2
18	477.667,624 483.394,137	19	477.658,449 483.415,445	28.95
				1
				6
				5
				8
				8
				7
				9

Punct început	X / Y	Punct sfârșit	X / Y	Lungime segment	Punct început	X / Y	Punct sfârșit	X / Y	Lungime segment	Punct început	X / Y	Punct sfârșit	X / Y	Lungime segment
19	477.658,449 483.415,445	20	477.649,135 483.455,06	40.695	20	477.649,135 483.455,06	21	477.653,981 483.478,752	24.182	21	477.653,981 483.478,752	22	477.668,316 483.498,966	24.781
22	477.668,316 483.498,966	23	477.673,476 483.510,242	12.4	23	477.673,476 483.510,242	24	477.675,356 483.528,362	18.217	24	477.675,356 483.528,362	25	477.652,758 483.583,134	59.252
25	477.652,758 483.583,134	26	477.631,699 483.605,049	30.393	26	477.631,699 483.605,049	27	477.632,391 483.598,833	6.254	27	477.632,391 483.598,833	28	477.632,427 483.598,506	0.329
28	477.632,427 483.598,506	29	477.649,349 483.580,908	24.414	29	477.649,349 483.580,908	30	477.671,273 483.527,77	57.484	30	477.671,273 483.527,77	31	477.669,566 483.511,308	16.55
31	477.669,566 483.511,308	32	477.664,835 483.500,973	11.366	32	477.664,835 483.500,973	33	477.650,231 483.480,379	25.247	33	477.650,231 483.480,379	34	477.645,04 483.455,0	25.904
34	477.645,04 483.455,0	35	477.654,624 483.414,233	41.879	35	477.654,624 483.414,233	36	477.663,219 483.392,902	22.997	36	477.663,219 483.392,902	37	477.678,357 483.319,629	74.82
37	477.678,357 483.319,629	38	477.692,174 483.296,389	27.038	38	477.692,174 483.296,389	39	477.717,349 483.275,634	32.627	39	477.717,349 483.275,634	40	477.742,856 483.254,605	33.058
40	477.742,856 483.254,605	41	477.754,797 483.238,198	20.292	41	477.754,797 483.238,198	42	477.768,206 483.212,027	29.406	42	477.768,206 483.212,027	43	477.795,407 483.188,24	36.135
43	477.795,407 483.188,24	44	477.829,644 483.151,299	50.367	44	477.829,644 483.151,299	45	477.857,974 483.122,534	40.373	45	477.857,974 483.122,534	46	477.877,264 483.112,242	21.864
46	477.877,264 483.112,242	47	477.892,2 483.099,597	19.571	47	477.892,2 483.099,597	48	477.902,723 483.083,724	19.043	48	477.902,723 483.083,724	49	477.907,747 483.067,703	16.791
49	477.907,747 483.067,703	50	477.913,495 483.055,497	13.492	50	477.913,495 483.055,497	51	477.915,946 483.048,482	7.431	51	477.915,946 483.048,482	52	478.021,067 482.965,741	133.778
52	478.021,067 482.965,741	53	478.024,601 482.962,923	4.52	53	478.024,601 482.962,923	54	478.056,836 482.946,781	36.051	54	478.056,836 482.946,781	1	478.058,69 482.950,307	3.984

** Lungimile segmentelor sunt determinate în planul de proiecție Stereo 70 și sunt rotunjite la 1 milimetru.

*** Distanța dintre puncte este formată din segmente cumulate ce sunt mai mici decât valoarea 1 milimetru.

**DATE DESPRE IMOBILUL NR. 2056**

Oficiul de Cadastru și Publicitate Imobiliară SIBIU
Biroul de Cadastru și Publicitate Imobiliară Agnita

A. Partea I. Descrierea imobilului

TEREN Extravilan

Adresa: Jud. Sibiu

Nr. Crt	Nr cadastral Nr. topografic	Suprafața* (mp)	Observații / Referințe
A1		776.800	Sector cadastral:73 Teren neimprejmuit;

B. Partea II. Proprietari și acte

Inscrieri privitoare la dreptul de proprietate și alte drepturi reale	Referințe
/	
Act Administrativ nr. 97, din 13/03/2002 emis de CJPSDPAT SIBIU (titlu de proprietate);	
B1	A1
Intabulare, drept de PROPRIETATE, dobandit prin Constituire, cota actuala 1/1 1) COMUNA BRUIU, CIF:4480270	

C. Partea III. SARCINI .

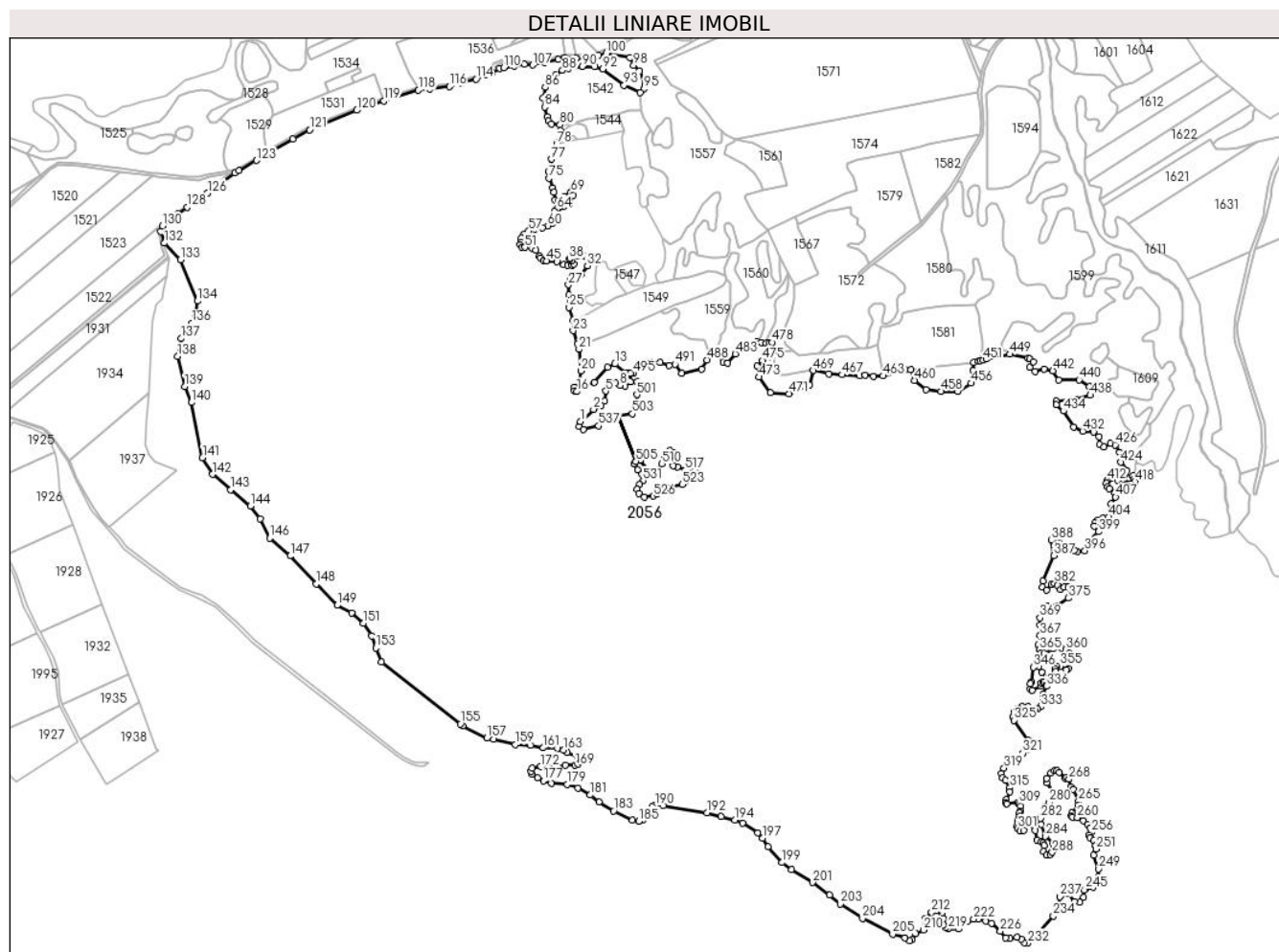
Inscrieri privind dezmembramintele dreptului de proprietate, drepturi reale de garanție și sarcini	Referințe
NU SUNT	

Anexa Nr. 1 La Partea I

Teren

Nr cadastral	Suprafața (mp)*	Observații / Referințe
	776.800	

* Suprafața este determinată în planul de proiecție Stereo 70.



Date referitoare la teren

Crt	Categorie folosință	Intravilan	Suprafața (mp)	Tarla	Parcelă	Nr. topo	Observații / Referințe
1	padure	NU	776.800	112	3389	-	

Lungime Segmente

1) Valorile lungimilor segmentelor sunt obținute din proiecție în plan.

Punct început	X / Y	Punct sfârșit	X / Y	Lungime segment
1	478.182,502 483.369,116	2	478.199,876 483.385,034	23.563
4	478.214,54 483.396,35	5	478.216,402 483.409,364	13.147
7	478.228,968 483.419,963	8	478.235,151 483.416,772	6.958
10	478.248,899 483.421,471	11	478.248,942 483.432,557	11.086
13	478.228,265 483.445,163	14	478.218,376 483.441,054	10.709
16	478.177,773 483.408,616	17	478.174,422 483.409,902	3.589
2	478.199,876 483.385,034	3	478.209,946 483.389,717	11.106
5	478.216,402 483.409,364	6	478.221,116 483.418,172	9.99
8	478.235,151 483.416,772	9	478.241,433 483.415,763	6.362
11	478.248,942 483.432,557	12	478.243,459 483.432,685	5.484
14	478.218,376 483.441,054	15	478.201,15 483.420,744	26.631
17	478.174,422 483.409,902	18	478.174,602 483.414,287	4.389
3	478.209,946 483.389,717	4	478.214,54 483.396,35	8.069
6	478.221,116 483.418,172	7	478.228,968 483.419,963	8.054
9	478.241,433 483.415,763	10	478.248,899 483.421,471	9.398
12	478.243,459 483.432,685	13	478.228,265 483.445,163	19.661
15	478.201,15 483.420,744	16	478.177,773 483.408,616	26.336
18	478.174,602 483.414,287	19	478.181,355 483.420,795	9.379

Punct început	X / Y	Punct sfârșit	X / Y	Lungime segment	Punct început	X / Y	Punct sfârșit	X / Y	Lungime segment	Punct început	X / Y	Punct sfârșit	X / Y	Lungime segment
19	478.181,355 483.420,795	20	478.183,359 483.435,854	15.19 2	20	478.183,359 483.435,854	21	478.180,639 483.464,403	28.67 8	21	478.180,639 483.464,403	22	478.178,933 483.471,768	7.56
22	478.178,933 483.471,768	23	478.172,805 483.489,216	18.49 3	23	478.172,805 483.489,216	24	478.172,674 483.503,302	14.08 7	24	478.172,674 483.503,302	25	478.167,383 483.519,997	17.51 3
25	478.167,383 483.519,997	26	478.166,978 483.536,313	16.32 1	26	478.166,978 483.536,313	27	478.166,509 483.549,921	13.61 6	27	478.166,509 483.549,921	28	478.169,159 483.558,115	8.612
28	478.169,159 483.558,115	29	478.172,818 483.560,384	4.305	29	478.172,818 483.560,384	30	478.179,884 483.561,897	7.226	30	478.179,884 483.561,897	31	478.183,165 483.563,662	3.726
31	478.183,165 483.563,662	32	478.191,736 483.574,963	14.18 4	32	478.191,736 483.574,963	33	478.195,498 483.580,155	6.412	33	478.195,498 483.580,155	34	478.191,019 483.586,062	7.413
34	478.191,019 483.586,062	35	478.187,883 483.587,404	3.411	35	478.187,883 483.587,404	36	478.179,552 483.587,494	8.331	36	478.179,552 483.587,494	37	478.169,07 483.585,346	10.7
37	478.169,07 483.585,346	38	478.167,854 483.583,741	2.014	38	478.167,854 483.583,741	39	478.170,235 483.581,049	3.594	39	478.170,235 483.581,049	40	478.173,639 483.577,201	5.138
40	478.173,639 483.577,201	41	478.171,31 483.575,411	2.937	41	478.171,31 483.575,411	42	478.165,845 483.575,411	5.465	42	478.165,845 483.575,411	43	478.160,463 483.576,58	5.507
43	478.160,463 483.576,58	44	478.151,238 483.580,796	10.14 3	44	478.151,238 483.580,796	45	478.137,645 483.581,49	13.61 1	45	478.137,645 483.581,49	46	478.133,577 483.582,481	4.187
46	478.133,577 483.582,481	47	478.129,509 483.585,158	4.87	47	478.129,509 483.585,158	48	478.127,899 483.587,992	3.259	48	478.127,899 483.587,992	49	478.123,617 483.595,479	8.625
49	478.123,617 483.595,479	50	478.118,83 483.598,082	5.449	50	478.118,83 483.598,082	51	478.108,918 483.599,332	9.991	51	478.108,918 483.599,332	52	478.105,427 483.599,952	3.546
52	478.105,427 483.599,952	53	478.102,713 483.603,207	4.238	53	478.102,713 483.603,207	54	478.103,997 483.606,027	3.099	54	478.103,997 483.606,027	55	478.103,997 483.611,879	5.852
55	478.103,997 483.611,879	56	478.107,609 483.616,531	5.89	56	478.107,609 483.616,531	57	478.114,068 483.621,033	7.873	57	478.114,068 483.621,033	58	478.121,778 483.623,864	8.213
58	478.121,778 483.623,864	59	478.132,367 483.625,386	10.69 8	59	478.132,367 483.625,386	60	478.139,317 483.627,71	7.328	60	478.139,317 483.627,71	61	478.145,205 483.630,47	6.503
61	478.145,205 483.630,47	62	478.147,747 483.633,685	4.099	62	478.147,747 483.633,685	63	478.148,518 483.646,448	12.78 6	63	478.148,518 483.646,448	64	478.151,086 483.650,296	4.626
64	478.151,086 483.650,296	65	478.154,704 483.652,744	4.368	65	478.154,704 483.652,744	66	478.160,736 483.653,882	6.138	66	478.160,736 483.653,882	67	478.168,568 483.657,524	8.637
67	478.168,568 483.657,524	68	478.173,342 483.668,655	12.11 2	68	478.173,342 483.668,655	69	478.170,159 483.672,063	4.663	69	478.170,159 483.672,063	70	478.160,781 483.666,837	10.73 6
70	478.160,781 483.666,837	71	478.153,334 483.660,023	10.09 4	71	478.153,334 483.660,023	72	478.149,203 483.662,15	4.646	72	478.149,203 483.662,15	73	478.147,195 483.672,29	10.33 7
73	478.147,195 483.672,29	74	478.146,04 483.678,122	5.945	74	478.146,04 483.678,122	75	478.140,797 483.691,014	13.91 7	75	478.140,797 483.691,014	76	478.140,394 483.699,878	8.873
76	478.140,394 483.699,878	77	478.144,011 483.716,057	16.57 8	77	478.144,011 483.716,057	78	478.151,245 483.736,168	21.37 2	78	478.151,245 483.736,168	79	478.156,474 483.754,098	18.67 7
79	478.156,474 483.754,098	80	478.155,677 483.761,45	7.395	80	478.155,677 483.761,45	81	478.143,848 483.762,903	11.91 8	81	478.143,848 483.762,903	82	478.140,369 483.766,253	4.83
82	478.140,369 483.766,253	83	478.138,504 483.772,27	6.299	83	478.138,504 483.772,27	84	478.135,305 483.785,14	13.26 2	84	478.135,305 483.785,14	85	478.133,275 483.796,84	11.87 5
85	478.133,275 483.796,84	86	478.135,9 483.811,004	14.40 5	86	478.135,9 483.811,004	87	478.149,429 483.827,478	21.31 7	87	478.149,429 483.827,478	88	478.158,748 483.833,637	11.17
88	478.158,748 483.833,637	89	478.166,225 483.836,127	7.881	89	478.166,225 483.836,127	90	478.185,31 483.838,89	19.28 4	90	478.185,31 483.838,89	91	478.201,38 483.838,484	16.07 5
91	478.201,38 483.838,484	92	478.212,442 483.835,663	11.41 6	92	478.212,442 483.835,663	93	478.240,372 483.813,938	35.38 4	93	478.240,372 483.813,938	94	478.261,913 483.804,107	23.67 8
94	478.261,913 483.804,107	95	478.266,725 483.809,209	7.013	95	478.266,725 483.809,209	96	478.268,124 483.814,677	5.644	96	478.268,124 483.814,677	97	478.260,525 483.832,585	19.45 4
97	478.260,525 483.832,585	98	478.252,974 483.840,067	10.63	98	478.252,974 483.840,067	99	478.248,013 483.850,241	11.31 9	99	478.248,013 483.850,241	100	478.216,941 483.856,241	31.64 6
100	478.216,941 483.856,241	101	478.206,595 483.853,394	10.73 1	101	478.206,595 483.853,394	102	478.201,484 483.850,849	5.71	102	478.201,484 483.850,849	103	478.176,857 483.850,017	24.64 1
103	478.176,857 483.850,017	104	478.161,874 483.850,444	14.98 9	104	478.161,874 483.850,444	105	478.153,268 483.848,312	8.866	105	478.153,268 483.848,312	106	478.135,015 483.843,789	18.80 5
106	478.135,015 483.843,789	107	478.119,453 483.840,763	15.85 3	107	478.119,453 483.840,763	108	478.108,242 483.841,63	11.24 4	108	478.108,242 483.841,63	109	478.094,649 483.839,19	13.81
109	478.094,649 483.839,19	110	478.081,287 483.837,231	13.50 5	110	478.081,287 483.837,231	111	478.075,462 483.836,376	5.887	111	478.075,462 483.836,376	112	478.066,241 483.830,897	10.72 6
112	478.066,241 483.830,897	113	478.056,589 483.827,268	10.31 2	113	478.056,589 483.827,268	114	478.044,406 483.822,084	13.24	114	478.044,406 483.822,084	115	478.025,625 483.816,754	19.52 3
115	478.025,625 483.816,754	116	478.009,028 483.812,043	17.25 3	116	478.009,028 483.812,043	117	477.982,854 483.809,051	26.34 4	117	477.982,854 483.809,051	118	477.968,06 483.807,359	14.89

Punct început	X / Y	Punct sfârșit	X / Y	Lungime segment	Punct început	X / Y	Punct sfârșit	X / Y	Lungime segment	Punct început	X / Y	Punct sfârșit	X / Y	Lungime segment
118	477.968,06 483.807,359	119	477.922,086 483.792,973	48.17 2	119	477.922,086 483.792,973	120	477.886,203 483.780,63	37.94 7	120	477.886,203 483.780,63	121	477.824,057 483.754,752	67.31 9
121	477.824,057 483.754,752	122	477.801,883 483.742,903	25.14 1	122	477.801,883 483.742,903	123	477.753,661 483.714,374	56.02 9	123	477.753,661 483.714,374	124	477.730,485 483.700,737	26.89 1
124	477.730,485 483.700,737	125	477.725,141 483.697,593	6.2	125	477.725,141 483.697,593	126	477.689,472 483.671,345	44.28 6	126	477.689,472 483.671,345	127	477.683,204 483.666,732	7.783
127	477.683,204 483.666,732	128	477.661,9 483.652,359	25.69 9	128	477.661,9 483.652,359	129	477.649,969 483.643,841	14.66	129	477.649,969 483.643,841	130	477.629,006 483.627,704	26.45 5
130	477.629,006 483.627,704	131	477.626,447 483.620,514	7.632	131	477.626,447 483.620,514	132	477.631,699 483.605,049	16.33 2	132	477.631,699 483.605,049	133	477.652,758 483.583,134	30.39 3
133	477.652,758 483.583,134	134	477.675,356 483.528,362	59.25 2	134	477.675,356 483.528,362	135	477.673,476 483.510,242	18.21 7	135	477.673,476 483.510,242	136	477.668,316 483.498,966	12.4
136	477.668,316 483.498,966	137	477.653,981 483.478,752	24.78 1	137	477.653,981 483.478,752	138	477.649,135 483.455,06	24.18 2	138	477.649,135 483.455,06	139	477.658,449 483.415,445	40.69 5
139	477.658,449 483.415,445	140	477.667,624 483.394,137	23.2	140	477.667,624 483.394,137	141	477.682,139 483.321,096	74.46 9	141	477.682,139 483.321,096	142	477.695,257 483.299,032	25.66 9
142	477.695,257 483.299,032	143	477.719,806 483.278,792	31.81 7	143	477.719,806 483.278,792	144	477.745,792 483.257,369	33.67 8	144	477.745,792 483.257,369	145	477.758,214 483.240,299	21.11 1
145	477.758,214 483.240,299	146	477.771,416 483.214,534	28.95 1	146	477.771,416 483.214,534	147	477.798,198 483.191,113	35.57 8	147	477.798,198 483.191,113	148	477.832,536 483.154,062	50.51 6
148	477.832,536 483.154,062	149	477.860,395 483.125,776	39.70 2	149	477.860,395 483.125,776	150	477.879,523 483.115,57	21.68	150	477.879,523 483.115,57	151	477.895,22 483.102,282	20.56 6
151	477.895,22 483.102,282	152	477.906,37 483.085,462	20.18	152	477.906,37 483.085,462	153	477.911,482 483.069,16	17.08 5	153	477.911,482 483.069,16	154	477.919,346 483.050,891	19.89
154	477.919,346 483.050,891	155	478.023,561 482.968,868	132.6 22	155	478.023,561 482.968,868	156	478.026,767 482.966,312	4.101	156	478.026,767 482.966,312	157	478.058,69 482.950,307	35.71
157	478.058,69 482.950,307	158	478.067,815 482.948,491	9.304	158	478.067,815 482.948,491	159	478.096,249 482.941,386	29.30 8	159	478.096,249 482.941,386	160	478.116,251 482.940,751	20.01 2
160	478.116,251 482.940,751	161	478.133,396 482.937,258	17.49 7	161	478.133,396 482.937,258	162	478.151,811 482.936,941	18.41 8	162	478.151,811 482.936,941	163	478.160,384 482.934,401	8.941
163	478.160,384 482.934,401	164	478.165,146 482.931,226	5.723	164	478.165,146 482.931,226	165	478.178,799 482.925,828	14.68 1	165	478.178,799 482.925,828	166	478.181,974 482.922,336	4.72
166	478.181,974 482.922,336	167	478.181,974 482.919,478	2.858	167	478.181,974 482.919,478	168	478.179,116 482.915,668	4.763	168	478.179,116 482.915,668	169	478.175,624 482.914,081	3.836
169	478.175,624 482.914,081	170	478.162,924 482.914,398	12.70 4	170	478.162,924 482.914,398	171	478.153,081 482.910,906	10.44 4	171	478.153,081 482.910,906	172	478.130,221 482.912,493	22.91 5
172	478.130,221 482.912,493	173	478.118,474 482.910,271	11.95 5	173	478.118,474 482.910,271	174	478.117,204 482.906,461	4.016	174	478.117,204 482.906,461	175	478.118,791 482.902,651	4.127
175	478.118,791 482.902,651	176	478.125,459 482.897,253	8.579	176	478.125,459 482.897,253	177	478.133,714 482.893,443	9.092	177	478.133,714 482.893,443	178	478.144,509 482.890,268	11.25 2
178	478.144,509 482.890,268	179	478.165,146 482.888,998	20.67 6	179	478.165,146 482.888,998	180	478.179,116 482.883,918	14.86 5	180	478.179,116 482.883,918	181	478.195,626 482.875,028	18.75 1
181	478.195,626 482.875,028	182	478.207,056 482.865,821	14.67 7	182	478.207,056 482.865,821	183	478.226,424 482.853,756	22.81 8	183	478.226,424 482.853,756	184	478.251,506 482.841,691	27.83 3
184	478.251,506 482.841,691	185	478.260,079 482.840,421	8.667	185	478.260,079 482.840,421	186	478.264,524 482.841,373	4.546	186	478.264,524 482.841,373	187	478.271,509 482.846,136	8.454
187	478.271,509 482.846,136	188	478.276,589 482.852,168	7.886	188	478.276,589 482.852,168	189	478.277,224 482.859,153	7.014	189	478.277,224 482.859,153	190	478.281,669 482.861,376	4.97
190	478.281,669 482.861,376	191	478.292,146 482.860,741	10.49 6	191	478.292,146 482.860,741	192	478.349,931 482.851,216	58.56 5	192	478.349,931 482.851,216	193	478.368,981 482.846,453	19.63 6
193	478.368,981 482.846,453	194	478.387,079 482.841,691	18.71 4	194	478.387,079 482.841,691	195	478.397,239 482.837,563	10.96 7	195	478.397,239 482.837,563	196	478.417,165 482.824,477	23.83 9
196	478.417,165 482.824,477	197	478.423,591 482.817,561	9.441	197	478.423,591 482.817,561	198	478.431,211 482.806,448	13.47 5	198	478.431,211 482.806,448	199	478.449,626 482.785,493	27.89 7
199	478.449,626 482.785,493	200	478.461,691 482.775,968	15.37 2	200	478.461,691 482.775,968	201	478.489,949 482.759,141	32.88 9	201	478.489,949 482.759,141	202	478.512,491 482.742,313	28.13
202	478.512,491 482.742,313	203	478.526,461 482.730,883	18.05	203	478.526,461 482.730,883	204	478.555,989 482.711,516	35.31 3	204	478.555,989 482.711,516	205	478.595,994 482.690,878	45.01 5
205	478.595,994 482.690,878	206	478.612,186 482.685,798	16.97	206	478.612,186 482.685,798	207	478.618,893 482.682,228	7.598	207	478.618,893 482.682,228	208	478.621,567 482.683,58	2.996
208	478.621,567 482.683,58	209	478.626,239 482.691,681	9.352	209	478.626,239 482.691,681	210	478.636,951 482.696,276	11.65 6	210	478.636,951 482.696,276	211	478.638,221 482.710,246	14.02 8
211	478.638,221 482.710,246	212	478.647,429 482.719,771	13.24 8	212	478.647,429 482.719,771	213	478.654,414 482.722,311	7.432	213	478.654,414 482.722,311	214	478.656,954 482.721,993	2.56
214	478.656,954 482.721,993	215	478.661,081 482.718,501	5.406	215	478.661,081 482.718,501	216	478.663,621 482.711,833	7.135	216	478.663,621 482.711,833	217	478.662,986 482.703,578	8.279

Punct început	X / Y	Punct sfârșit	X / Y	Lungime segment	Punct început	X / Y	Punct sfârșit	X / Y	Lungime segment	Punct început	X / Y	Punct sfârșit	X / Y	Lungime segment
217	478.662,986 482.703,578	218	478.666,479 482.699,133	5.653	218	478.666,479 482.699,133	219	478.669,654 482.697,546	3.55	219	478.669,654 482.697,546	220	478.683,197 482.697,676	13.544
220	478.683,197 482.697,676	221	478.694,736 482.707,706	15.289	221	478.694,736 482.707,706	222	478.703,309 482.710,563	9.037	222	478.703,309 482.710,563	223	478.709,659 482.710,563	6.35
223	478.709,659 482.710,563	224	478.719,501 482.708,341	10.09	224	478.719,501 482.708,341	225	478.726,804 482.704,848	8.095	225	478.726,804 482.704,848	226	478.738,551 482.694,688	15.531
226	478.738,551 482.694,688	227	478.745,536 482.685,798	11.306	227	478.745,536 482.685,798	228	478.751,251 482.685,163	5.75	228	478.751,251 482.685,163	229	478.760,459 482.687,068	9.403
229	478.760,459 482.687,068	230	478.766,491 482.683,893	6.817	230	478.766,491 482.683,893	231	478.770,42 482.679,359	6.0	231	478.770,42 482.679,359	232	478.775,144 482.679,332	4.724
232	478.775,144 482.679,332	233	478.782,684 482.685,481	9.729	233	478.782,684 482.685,481	234	478.808,719 482.714,691	39.129	234	478.808,719 482.714,691	235	478.813,164 482.721,358	8.013
235	478.813,164 482.721,358	236	478.816,021 482.728,026	7.254	236	478.816,021 482.728,026	237	478.817,291 482.740,408	12.447	237	478.817,291 482.740,408	238	478.819,196 482.742,948	3.175
238	478.819,196 482.742,948	239	478.823,959 482.745,488	5.398	239	478.823,959 482.745,488	240	478.828,086 482.745,171	4.139	240	478.828,086 482.745,171	241	478.836,659 482.734,058	14.035
241	478.836,659 482.734,058	242	478.843,961 482.732,788	7.412	242	478.843,961 482.732,788	243	478.848,724 482.739,456	8.194	243	478.848,724 482.739,456	244	478.849,359 482.748,663	9.229
244	478.849,359 482.748,663	245	478.851,264 482.750,568	2.694	245	478.851,264 482.750,568	246	478.861,424 482.752,791	10.4	246	478.861,424 482.752,791	247	478.866,504 482.759,776	8.637
247	478.866,504 482.759,776	248	478.868,409 482.766,443	6.934	248	478.868,409 482.766,443	249	478.868,726 482.776,921	10.483	249	478.868,726 482.776,921	250	478.862,376 482.795,018	19.179
250	478.862,376 482.795,018	251	478.864,916 482.803,273	8.637	251	478.864,916 482.803,273	252	478.864,599 482.807,718	4.456	252	478.864,599 482.807,718	253	478.862,03 482.814,411	7.169
253	478.862,03 482.814,411	254	478.856,979 482.818,513	6.507	254	478.856,979 482.818,513	255	478.855,825 482.821,974	3.648	255	478.855,825 482.821,974	256	478.858,566 482.825,498	4.464
256	478.858,566 482.825,498	257	478.856,979 482.830,896	5.626	257	478.856,979 482.830,896	258	478.854,439 482.835,658	5.397	258	478.854,439 482.835,658	259	478.848,406 482.841,056	8.095
259	478.848,406 482.841,056	260	478.840,469 482.845,183	8.946	260	478.840,469 482.845,183	261	478.834,436 482.845,501	6.041	261	478.834,436 482.845,501	262	478.832,849 482.847,406	2.479
262	478.832,849 482.847,406	263	478.833,166 482.850,898	3.506	263	478.833,166 482.850,898	264	478.841,104 482.861,058	12.893	264	478.841,104 482.861,058	265	478.842,105 482.866,711	5.741
265	478.842,105 482.866,711	266	478.834,553 482.882,129	17.168	266	478.834,553 482.882,129	267	478.831,579 482.885,188	4.266	267	478.831,579 482.885,188	268	478.829,356 482.895,666	10.711
268	478.829,356 482.895,666	269	478.826,377 482.898,502	4.113	269	478.826,377 482.898,502	270	478.824,235 482.896,756	2.763	270	478.824,235 482.896,756	271	478.816,339 482.904,873	11.324
271	478.816,339 482.904,873	272	478.813,164 482.906,778	3.703	272	478.813,164 482.906,778	273	478.809,989 482.906,778	3.175	273	478.809,989 482.906,778	274	478.805,226 482.903,921	5.554
274	478.805,226 482.903,921	275	478.799,829 482.896,936	8.827	275	478.799,829 482.896,936	276	478.800,146 482.891,221	5.724	276	478.800,146 482.891,221	277	478.811,894 482.875,981	19.242
277	478.811,894 482.875,981	278	478.811,894 482.873,123	2.858	278	478.811,894 482.873,123	279	478.810,306 482.871,218	2.48	279	478.810,306 482.871,218	280	478.803,004 482.865,186	9.471
280	478.803,004 482.865,186	281	478.798,241 482.859,788	7.199	281	478.798,241 482.859,788	282	478.791,574 482.843,913	17.218	282	478.791,574 482.843,913	283	478.792,209 482.835,658	8.279
283	478.792,209 482.835,658	284	478.798,559 482.820,101	16.803	284	478.798,559 482.820,101	285	478.808,401 482.811,528	13.052	285	478.808,401 482.811,528	286	478.809,989 482.808,353	3.55
286	478.809,989 482.808,353	287	478.810,306 482.804,226	4.139	287	478.810,306 482.804,226	288	478.807,131 482.799,146	5.991	288	478.807,131 482.799,146	289	478.804,591 482.796,288	3.824
289	478.804,591 482.796,288	290	478.800,146 482.795,336	4.546	290	478.800,146 482.795,336	291	478.795,701 482.800,416	6.75	291	478.795,701 482.800,416	292	478.796,336 482.807,718	7.33
292	478.796,336 482.807,718	293	478.794,749 482.811,211	3.837	293	478.794,749 482.811,211	294	478.792,844 482.813,116	2.694	294	478.792,844 482.813,116	295	478.786,811 482.815,338	6.429
295	478.786,811 482.815,338	296	478.784,906 482.827,721	12.529	296	478.784,906 482.827,721	297	478.781,068 482.836,349	9.443	297	478.781,068 482.836,349	298	478.776,016 482.835,341	5.152
298	478.776,016 482.835,341	299	478.769,666 482.827,721	9.919	299	478.769,666 482.827,721	300	478.764,904 482.827,403	4.773	300	478.764,904 482.827,403	301	478.761,729 482.830,261	4.272
301	478.761,729 482.830,261	302	478.760,776 482.833,753	3.62	302	478.760,776 482.833,753	303	478.762,364 482.836,928	3.55	303	478.762,364 482.836,928	304	478.762,046 482.841,373	4.456
304	478.762,046 482.841,373	305	478.763,951 482.846,771	5.724	305	478.763,951 482.846,771	306	478.763,634 482.851,216	4.456	306	478.763,634 482.851,216	307	478.765,221 482.853,756	2.995
307	478.765,221 482.853,756	308	478.765,539 482.859,788	6.04	308	478.765,539 482.859,788	309	478.763,634 482.863,281	3.979	309	478.763,634 482.863,281	310	478.761,411 482.864,551	2.56
310	478.761,411 482.864,551	311	478.746,75 482.863,595	14.692	311	478.746,75 482.863,595	312	478.745,593 482.865,193	1.973	312	478.745,593 482.865,193	313	478.746,489 482.868,996	3.907
313	478.746,489 482.868,996	314	478.750,934 482.879,156	11.09	314	478.750,934 482.879,156	315	478.751,251 482.884,553	5.406	315	478.751,251 482.884,553	316	478.745,219 482.894,713	11.816

Punct început	X / Y	Punct sfârșit	X / Y	Lungime segment	Punct început	X / Y	Punct sfârșit	X / Y	Lungime segment	Punct început	X / Y	Punct sfârșit	X / Y	Lungime segment
316	478.745,219 482.894,713	317	478.741,726 482.897,888	4.72	317	478.741,726 482.897,888	318	478.740,139 482.903,286	5.626	318	478.740,139 482.903,286	319	478.743,314 482.910,588	7.962
319	478.743,314 482.910,588	320	478.761,411 482.922,336	21.57 6	320	478.761,411 482.922,336	321	478.768,396 482.930,273	10.57 3	321	478.768,396 482.930,273	322	478.774,429 482.934,401	7.31
322	478.774,429 482.934,401	323	478.777,921 482.941,386	7.809	323	478.777,921 482.941,386	324	478.776,016 482.946,783	5.723	324	478.776,016 482.946,783	325	478.756,649 482.973,771	33.21 8
325	478.756,649 482.973,771	326	478.755,379 482.978,533	4.928	326	478.755,379 482.978,533	327	478.757,601 482.984,883	6.728	327	478.757,601 482.984,883	328	478.762,046 482.989,646	6.515
328	478.762,046 482.989,646	329	478.766,809 482.991,868	5.256	329	478.766,809 482.991,868	330	478.775,064 482.992,186	8.261	330	478.775,064 482.992,186	331	478.784,906 482.987,741	10.79 9
331	478.784,906 482.987,741	332	478.787,446 482.988,376	2.618	332	478.787,446 482.988,376	333	478.791,891 482.991,551	5.462	333	478.791,891 482.991,551	334	478.795,701 482.999,488	8.804
334	478.795,701 482.999,488	335	478.795,384 483.007,743	8.261	335	478.795,384 483.007,743	336	478.799,829 483.018,856	11.96 9	336	478.799,829 483.018,856	337	478.799,511 483.021,396	2.56
337	478.799,511 483.021,396	338	478.796,971 483.024,571	4.066	338	478.796,971 483.024,571	339	478.794,749 483.024,571	2.222	339	478.794,749 483.024,571	340	478.792,844 483.022,666	2.694
340	478.792,844 483.022,666	341	478.792,431 483.018,804	3.884	341	478.792,431 483.018,804	342	478.780,461 483.013,458	13.11	342	478.780,461 483.013,458	343	478.778,556 483.015,046	2.48
343	478.778,556 483.015,046	344	478.778,556 483.022,031	6.985	344	478.778,556 483.022,031	345	478.780,144 483.024,888	3.269	345	478.780,144 483.024,888	346	478.782,366 483.043,938	19.17 9
346	478.782,366 483.043,938	347	478.783,954 483.045,843	2.48	347	478.783,954 483.045,843	348	478.789,669 483.044,891	5.794	348	478.789,669 483.044,891	349	478.793,722 483.037,018	8.855
349	478.793,722 483.037,018	350	478.803,113 483.027,694	13.23 4	350	478.803,113 483.027,694	351	478.808,719 483.028,698	5.695	351	478.808,719 483.028,698	352	478.811,576 483.037,906	9.641
352	478.811,576 483.037,906	353	478.810,624 483.042,033	4.235	353	478.810,624 483.042,033	354	478.813,164 483.045,208	4.066	354	478.813,164 483.045,208	355	478.817,926 483.045,526	4.773
355	478.817,926 483.045,526	356	478.825,973 483.040,918	9.273	356	478.825,973 483.040,918	357	478.828,471 483.042,245	2.829	357	478.828,471 483.042,245	358	478.827,347 483.050,911	8.739
358	478.827,347 483.050,911	359	478.829,854 483.061,718	11.09 4	359	478.829,854 483.061,718	360	478.825,103 483.067,539	7.514	360	478.825,103 483.067,539	361	478.819,514 483.069,338	5.871
361	478.819,514 483.069,338	362	478.808,756 483.068,504	10.79	362	478.808,756 483.068,504	363	478.796,679 483.061,862	13.78 3	363	478.796,679 483.061,862	364	478.792,65 483.063,021	4.192
364	478.792,65 483.063,021	365	478.790,076 483.066,617	4.422	365	478.790,076 483.066,617	366	478.788,832 483.073,215	6.714	366	478.788,832 483.073,215	367	478.791,263 483.085,952	12.96 7
367	478.791,263 483.085,952	368	478.790,662 483.099,836	13.89 7	368	478.790,662 483.099,836	369	478.791,047 483.109,131	9.303	369	478.791,047 483.109,131	370	478.794,114 483.119,875	11.17 3
370	478.794,114 483.119,875	371	478.796,112 483.123,369	4.025	371	478.796,112 483.123,369	372	478.800,94 483.124,643	4.993	372	478.800,94 483.124,643	373	478.808,156 483.122,853	7.435
373	478.808,156 483.122,853	374	478.814,238 483.125,16	6.505	374	478.814,238 483.125,16	375	478.828,865 483.135,46	17.89	375	478.828,865 483.135,46	376	478.831,579 483.142,363	7.417
376	478.831,579 483.142,363	377	478.831,579 483.145,538	3.175	377	478.831,579 483.145,538	378	478.828,404 483.149,666	5.208	378	478.828,404 483.149,666	379	478.823,324 483.149,666	5.08
379	478.823,324 483.149,666	380	478.817,967 483.147,052	5.961	380	478.817,967 483.147,052	381	478.814,434 483.152,523	6.513	381	478.814,434 483.152,523	382	478.810,306 483.155,063	4.847
382	478.810,306 483.155,063	383	478.806,496 483.153,158	4.26	383	478.806,496 483.153,158	384	478.799,573 483.145,863	10.05 7	384	478.799,573 483.145,863	385	478.794,431 483.149,983	6.589
385	478.794,431 483.149,983	386	478.794,749 483.158,238	8.261	386	478.794,749 483.158,238	387	478.809,036 483.191,576	36.27	387	478.809,036 483.191,576	388	478.806,179 483.211,896	20.52
388	478.806,179 483.211,896	389	478.809,027 483.215,609	4.679	389	478.809,027 483.215,609	390	478.813,075 483.214,448	4.211	390	478.813,075 483.214,448	391	478.816,021 483.209,673	5.611
391	478.816,021 483.209,673	392	478.818,162 483.200,951	8.981	392	478.818,162 483.200,951	393	478.821,191 483.199,811	3.236	393	478.821,191 483.199,811	394	478.836,659 483.198,561	15.51 8
394	478.836,659 483.198,561	395	478.840,469 483.196,973	4.128	395	478.840,469 483.196,973	396	478.850,418 483.198,136	10.01 7	396	478.850,418 483.198,136	397	478.855,787 483.205,65	9.235
397	478.855,787 483.205,65	398	478.858,251 483.213,283	8.021	398	478.858,251 483.213,283	399	478.868,539 483.223,301	14.36	399	478.868,539 483.223,301	400	478.862,906 483.230,835	9.407
400	478.862,906 483.230,835	401	478.863,323 483.234,308	3.498	401	478.863,323 483.234,308	402	478.867,872 483.238,4	6.119	402	478.867,872 483.238,4	403	478.873,889 483.240,838	6.492
403	478.873,889 483.240,838	404	478.881,918 483.242,629	8.226	404	478.881,918 483.242,629	405	478.884,718 483.249,511	7.43	405	478.884,718 483.249,511	406	478.885,312 483.260,091	10.59 7
406	478.885,312 483.260,091	407	478.891,167 483.269,051	10.70 3	407	478.891,167 483.269,051	408	478.890,403 483.274,615	5.616	408	478.890,403 483.274,615	409	478.883,126 483.279,819	8.946
409	478.883,126 483.279,819	410	478.880,252 483.282,601	4.0	410	478.880,252 483.282,601	411	478.878,904 483.287,178	4.771	411	478.878,904 483.287,178	412	478.879,893 483.290,498	3.464
412	478.879,893 483.290,498	413	478.882,318 483.293,19	3.623	413	478.882,318 483.293,19	414	478.886,091 483.294,245	3.918	414	478.886,091 483.294,245	415	478.893,691 483.291,203	8.186

Punct început	X / Y	Punct sfârșit	X / Y	Lungime segment	Punct început	X / Y	Punct sfârșit	X / Y	Lungime segment	Punct început	X / Y	Punct sfârșit	X / Y	Lungime segment
415	478.893,691 483.291,203	416	478.905,494 483.283,947	13.855	416	478.905,494 483.283,947	417	478.912,388 483.284,001	6.894	417	478.912,388 483.284,001	418	478.916,715 483.289,39	6.911
418	478.916,715 483.289,39	419	478.915,964 483.293,166	3.85	419	478.915,964 483.293,166	420	478.913,777 483.296,647	4.111	420	478.913,777 483.296,647	421	478.909,539 483.293,738	5.14
421	478.909,539 483.293,738	422	478.906,188 483.293,97	3.359	422	478.906,188 483.293,97	423	478.906,364 483.304,157	10.189	423	478.906,364 483.304,157	424	478.898,245 483.315,041	13.579
424	478.898,245 483.315,041	425	478.896,382 483.328,491	13.578	425	478.896,382 483.328,491	426	478.890,551 483.338,043	11.191	426	478.890,551 483.338,043	427	478.884,069 483.340,222	6.838
427	478.884,069 483.340,222	428	478.875,91 483.335,543	9.405	428	478.875,91 483.335,543	429	478.870,202 483.338,824	6.584	429	478.870,202 483.338,824	430	478.869,284 483.349,219	10.435
430	478.869,284 483.349,219	431	478.861,739 483.355,081	9.555	431	478.861,739 483.355,081	432	478.847,644 483.356,399	14.156	432	478.847,644 483.356,399	433	478.835,382 483.361,802	13.4
433	478.835,382 483.361,802	434	478.821,868 483.382,82	24.988	434	478.821,868 483.382,82	435	478.812,286 483.391,054	12.634	435	478.812,286 483.391,054	436	478.812,298 483.395,73	4.676
436	478.812,298 483.395,73	437	478.838,799 483.398,588	26.655	437	478.838,799 483.398,588	438	478.857,647 483.403,706	19.531	438	478.857,647 483.403,706	439	478.856,425 483.415,52	11.877
439	478.856,425 483.415,52	440	478.842,929 483.423,899	15.886	440	478.842,929 483.423,899	441	478.815,73 483.423,97	27.199	441	478.815,73 483.423,97	442	478.808,054 483.436,102	14.356
442	478.808,054 483.436,102	443	478.796,444 483.438,657	11.888	443	478.796,444 483.438,657	444	478.784,752 483.435,105	12.22	444	478.784,752 483.435,105	445	478.777,501 483.440,333	8.939
445	478.777,501 483.440,333	446	478.781,939 483.447,739	8.634	446	478.781,939 483.447,739	447	478.777,233 483.451,55	6.056	447	478.777,233 483.451,55	448	478.775,37 483.453,059	2.397
448	478.775,37 483.453,059	449	478.750,974 483.457,971	24.886	449	478.750,974 483.457,971	450	478.719,97 483.451,82	31.608	450	478.719,97 483.451,82	451	478.715,763 483.450,453	4.424
451	478.715,763 483.450,453	452	478.711,901 483.449,199	4.06	452	478.711,901 483.449,199	453	478.709,468 483.448,629	2.499	453	478.709,468 483.448,629	454	478.703,261 483.447,175	6.375
454	478.703,261 483.447,175	455	478.702,524 483.436,546	10.655	455	478.702,524 483.436,546	456	478.699,784 483.419,765	17.004	456	478.699,784 483.419,765	457	478.682,696 483.408,777	20.317
457	478.682,696 483.408,777	458	478.659,678 483.408,789	23.018	458	478.659,678 483.408,789	459	478.640,059 483.411,078	19.752	459	478.640,059 483.411,078	460	478.625,219 483.423,395	19.286
460	478.625,219 483.423,395	461	478.619,803 483.437,904	15.487	461	478.619,803 483.437,904	462	478.613,219 483.437,183	6.623	462	478.613,219 483.437,183	463	478.583,275 483.429,24	30.98
463	478.583,275 483.429,24	464	478.570,483 483.428,659	12.805	464	478.570,483 483.428,659	465	478.559,744 483.430,547	10.904	465	478.559,744 483.430,547	466	478.552,04 483.429,835	7.737
466	478.552,04 483.429,835	467	478.528,789 483.430,788	23.271	467	478.528,789 483.430,788	468	478.511,131 483.431,849	17.69	468	478.511,131 483.431,849	469	478.491,096 483.436,575	20.585
469	478.491,096 483.436,575	470	478.486,225 483.417,726	19.468	470	478.486,225 483.417,726	471	478.458,698 483.405,786	30.005	471	478.458,698 483.405,786	472	478.434,364 483.407,41	24.388
472	478.434,364 483.407,41	473	478.418,606 483.427,813	25.78	473	478.418,606 483.427,813	474	478.416,603 483.442,29	14.615	474	478.416,603 483.442,29	475	478.423,478 483.449,641	10.065
475	478.423,478 483.449,641	476	478.435,426 483.454,456	12.882	476	478.435,426 483.454,456	477	478.438,234 483.460,767	6.908	477	478.438,234 483.460,767	478	478.436,145 483.473,603	13.005
478	478.436,145 483.473,603	479	478.432,638 483.473,046	3.551	479	478.432,638 483.473,046	480	478.428,819 483.472,44	3.867	480	478.428,819 483.472,44	481	478.421,81 483.473,443	7.08
481	478.421,81 483.473,443	482	478.416,58 483.474,19	5.283	482	478.416,58 483.474,19	483	478.387,718 483.458,564	32.821	483	478.387,718 483.458,564	484	478.377,341 483.446,177	16.159
484	478.377,341 483.446,177	485	478.371,609 483.447,061	5.8	485	478.371,609 483.447,061	486	478.370,21 483.454,153	7.229	486	478.370,21 483.454,153	487	478.363,872 483.459,055	8.012
487	478.363,872 483.459,055	488	478.350,134 483.450,546	16.16	488	478.350,134 483.450,546	489	478.343,216 483.438,46	13.926	489	478.343,216 483.438,46	490	478.316,736 483.433,032	27.031
490	478.316,736 483.433,032	491	478.307,659 483.444,705	14.787	491	478.307,659 483.444,705	492	478.299,694 483.442,956	8.155	492	478.299,694 483.442,956	493	478.288,18 483.446,967	12.193
493	478.288,18 483.446,967	494	478.275,649 483.447,22	12.534	494	478.275,649 483.447,22	495	478.252,964 483.432,463	27.062	495	478.252,964 483.432,463	496	478.248,945 483.432,557	4.02
496	478.248,945 483.432,557	497	478.248,903 483.421,471	11.086	497	478.248,903 483.421,471	498	478.257,89 483.421,413	8.988	498	478.257,89 483.421,413	499	478.263,889 483.418,285	6.766
499	478.263,889 483.418,285	500	478.264,355 483.414,394	3.918	500	478.264,355 483.414,394	501	478.257,278 483.404,478	12.183	501	478.257,278 483.404,478	502	478.255,278 483.387,012	17.58
502	478.255,278 483.387,012	503	478.251,346 483.379,198	8.748	503	478.251,346 483.379,198	504	478.232,073 483.376,102	19.52	504	478.232,073 483.376,102	505	478.256,014 483.316,163	64.543
505	478.256,014 483.316,163	506	478.261,798 483.317,997	6.067	506	478.261,798 483.317,997	507	478.272,87 483.304,502	17.456	507	478.272,87 483.304,502	508	478.278,908 483.301,456	6.763
508	478.278,908 483.301,456	509	478.285,266 483.304,35	6.985	509	478.285,266 483.304,35	510	478.290,74 483.313,033	10.265	510	478.290,74 483.313,033	511	478.294,58 483.322,858	10.548
511	478.294,58 483.322,858	512	478.300,708 483.330,371	9.696	512	478.300,708 483.330,371	513	478.306,737 483.328,066	6.455	513	478.306,737 483.328,066	514	478.308,035 483.318,669	9.485

Punct început	X / Y	Punct sfârșit	X / Y	Lungime segment	Punct început	X / Y	Punct sfârșit	X / Y	Lungime segment	Punct început	X / Y	Punct sfârșit	X / Y	Lungime segment
514	478.308,035 483.318,669	515	478.305,126 483.310,739	8.447	515	478.305,126 483.310,739	516	478.311,086 483.309,087	6.185	516	478.311,086 483.309,087	517	478.321,283 483.304,698	11.101
517	478.321,283 483.304,698	518	478.334,427 483.304,43	13.147	518	478.334,427 483.304,43	519	478.338,535 483.301,616	4.98	519	478.338,535 483.301,616	520	478.339,683 483.299,016	2.842
520	478.339,683 483.299,016	521	478.337,017 483.293,748	5.904	521	478.337,017 483.293,748	522	478.334,445 483.291,258	3.581	522	478.334,445 483.291,258	523	478.317,578 483.285,738	17.747
523	478.317,578 483.285,738	524	478.296,753 483.281,502	21.251	524	478.296,753 483.281,502	525	478.284,127 483.273,132	15.149	525	478.284,127 483.273,132	526	478.279,103 483.270,276	5.779
526	478.279,103 483.270,276	527	478.267,155 483.269,155	12.0	527	478.267,155 483.269,155	528	478.259,833 483.274,157	8.868	528	478.259,833 483.274,157	529	478.257,617 483.279,698	5.967
529	478.257,617 483.279,698	530	478.260,489 483.285,405	6.39	530	478.260,489 483.285,405	531	478.265,379 483.290,556	7.102	531	478.265,379 483.290,556	532	478.263,966 483.299,445	9.0
532	478.263,966 483.299,445	533	478.258,16 483.304,857	7.938	533	478.258,16 483.304,857	534	478.253,312 483.313,072	9.538	534	478.253,312 483.313,072	535	478.256,011 483.316,162	4.102
535	478.256,011 483.316,162	536	478.232,069 483.376,1	64.543	536	478.232,069 483.376,1	537	478.206,57 483.363,268	28.546	537	478.206,57 483.363,268	538	478.186,383 483.358,69	20.699
538	478.186,383 483.358,69	539	478.180,585 483.362,144	6.75	539	478.180,585 483.362,144	1	478.182,502 483.369,116	7.231					

** Lungimile segmentelor sunt determinate în planul de proiecție Stereo 70 și sunt rotunjite la 1 milimetru.

*** Distanța dintre puncte este formată din segmente cumulate ce sunt mai mici decât valoarea 1 milimetru.

**DATE DESPRE IMOBILUL NR. 2081**

Oficiul de Cadastru și Publicitate Imobiliară SIBIU
Biroul de Cadastru și Publicitate Imobiliară Agnita

A. Partea I. Descrierea imobilului

TEREN Extravilan

Adresa: Jud. Sibiu

Nr. Crt	Nr cadastral Nr. topografic	Suprafața* (mp)	Observații / Referințe
A1		2.500	Sector cadastral:73 Teren neimprejmuit;

B. Partea II. Proprietari și acte

Inscrieri privitoare la dreptul de proprietate și alte drepturi reale		Referințe
/		
Act Administrativ nr. 97, din 13/03/2002 emis de CJPSDPAT SIBIU (titlu de proprietate);		
B1	Intabulare, drept de PROPRIETATE, dobandit prin Constituire, cota actuala 1/1 1) COMUNA BRUIU, CIF:4480270	A1

C. Partea III. SARCINI .

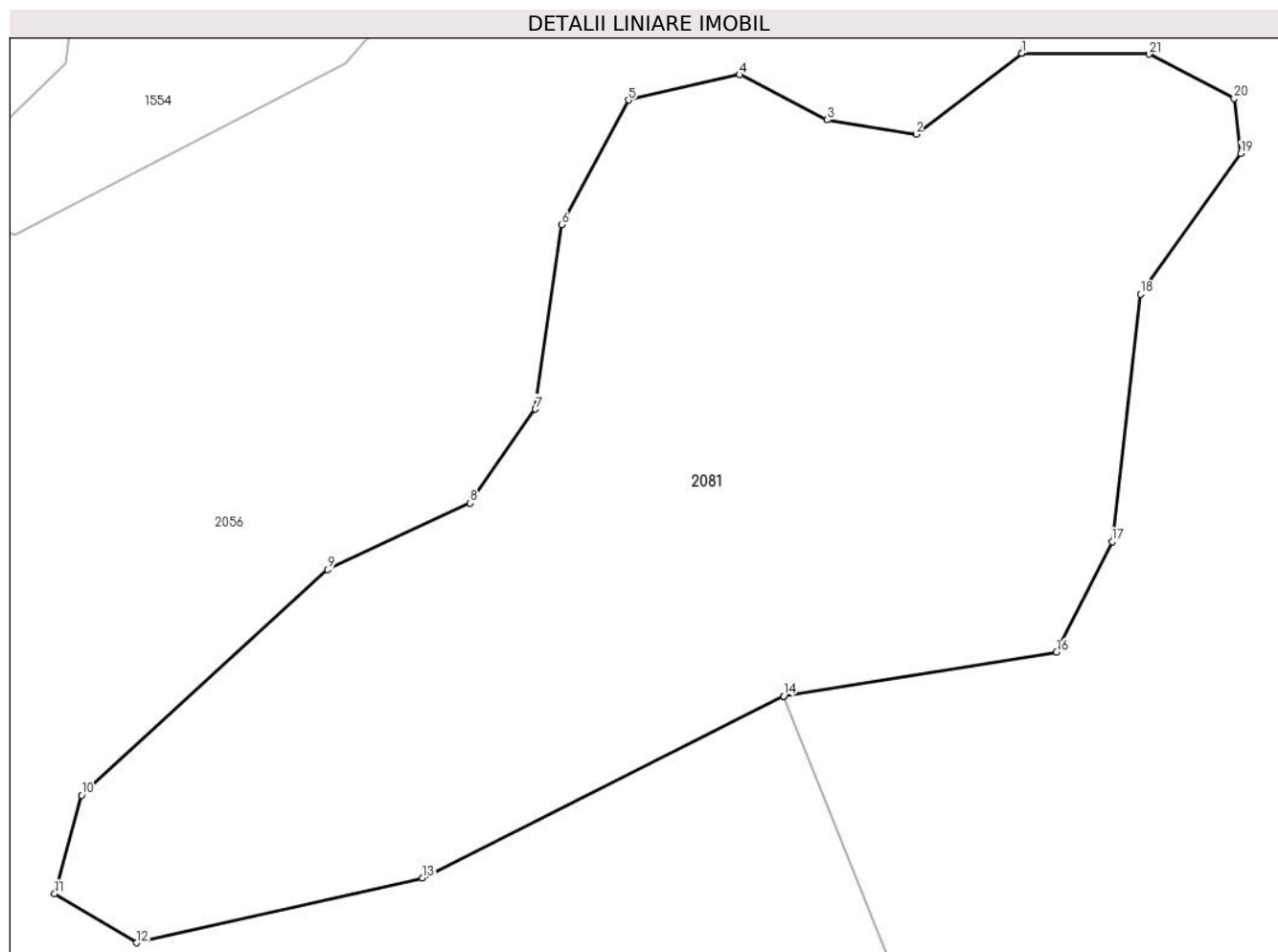
Inscrieri privind dezmembramintele dreptului de proprietate, drepturi reale de garanție și sarcini	Referințe
NU SUNT	

Anexa Nr. 1 La Partea I

Teren

Nr cadastral	Suprafața (mp)*	Observații / Referințe
	2.500	

* Suprafața este determinată în planul de proiecție Stereo 70.



Date referitoare la teren

Crt	Categorie folosință	Intra vilan	Suprafața (mp)	Tarla	Parcelă	Nr. topo	Observații / Referințe
1	faneata	NU	2.500	112	3385	-	

Lungime Segmente

1) Valorile lungimilor segmentelor sunt obținute din proiecție în plan.

Punct început	X / Y	Punct sfârșit	X / Y	Lungime segment (** (m)
1	478.248,899 483.421,471	2	478.241,433 483.415,763	9.398
3	478.235,151 483.416,772	4	478.228,968 483.419,963	6.958
5	478.221,116 483.418,172	6	478.216,402 483.409,364	9.99
7	478.214,54 483.396,35	8	478.209,946 483.389,717	8.069
9	478.199,876 483.385,034	10	478.182,502 483.369,116	23.563

Punct început	X / Y	Punct sfârșit	X / Y	Lungime segment (** (m)
2	478.241,433 483.415,763	3	478.235,151 483.416,772	6.362
4	478.228,968 483.419,963	5	478.221,116 483.418,172	8.054
6	478.216,402 483.409,364	7	478.214,54 483.396,35	13.147
8	478.209,946 483.389,717	9	478.199,876 483.385,034	11.106
10	478.182,502 483.369,116	11	478.180,585 483.362,144	7.231

Punct început	X / Y	Punct sfârșit	X / Y	Lungime segment (** (m)
11	478.180,585 483.362,144	12	478.186,383 483.358,69	6.75
13	478.206,57 483.363,268	14	478.232,069 483.376,1	28.546
15	478.232,073 483.376,102	16	478.251,346 483.379,198	19.52
17	478.255,278 483.387,012	18	478.257,278 483.404,478	17.58
19	478.264,355 483.414,394	20	478.263,889 483.418,285	3.918
21	478.257,89 483.421,413	22	478.248,903 483.421,471	8.988

Punct început	X / Y	Punct sfârșit	X / Y	Lungime segment (** (m)
12	478.186,383 483.358,69	13	478.206,57 483.363,268	20.699
14	478.232,069 483.376,1	15	478.232,073 483.376,102	0.004
16	478.251,346 483.379,198	17	478.255,278 483.387,012	8.748
18	478.257,278 483.404,478	19	478.264,355 483.414,394	12.183
20	478.263,889 483.418,285	21	478.257,89 483.421,413	6.766
22	478.248,903 483.421,471	1	478.248,899 483.421,471	0.004

** Lungimile segmentelor sunt determinate în planul de proiecție Stereo 70 și sunt rotunjite la 1 milimetru.

*** Distanța dintre puncte este formată din segmente cumulate ce sunt mai mici decât valoarea 1 milimetru.

**DATE DESPRE IMOBILUL NR. 2082**

Oficiul de Cadastru și Publicitate Imobiliară SIBIU
Biroul de Cadastru și Publicitate Imobiliară Agnita

A. Partea I. Descrierea imobilului

TEREN Extravilan

Adresa: Jud. Sibiu

Nr. Crt	Nr cadastral Nr. topografic	Suprafața* (mp)	Observații / Referințe
A1	101579	2.400	Sector cadastral:73 Teren neimprejmuit;

B. Partea II. Proprietari și acte

Inscrieri privitoare la dreptul de proprietate și alte drepturi reale		Referințe
10694 / 11/10/2017		
Act Administrativ nr. TP nr. 97, din 13/03/2002 emis de CJSIPT Sibiu (documentatie cadastrala receptionata de OCPI Sibiu);		
B1	Intabulare, drept de PROPRIETATE- potr. L. 18/1991, L. 169/1997 si L. 1/2000, dobandit prin Lege, cota actuala 1/1 1) COMUNA BRUIU , CIF:4480270	A1

C. Partea III. SARCINI .

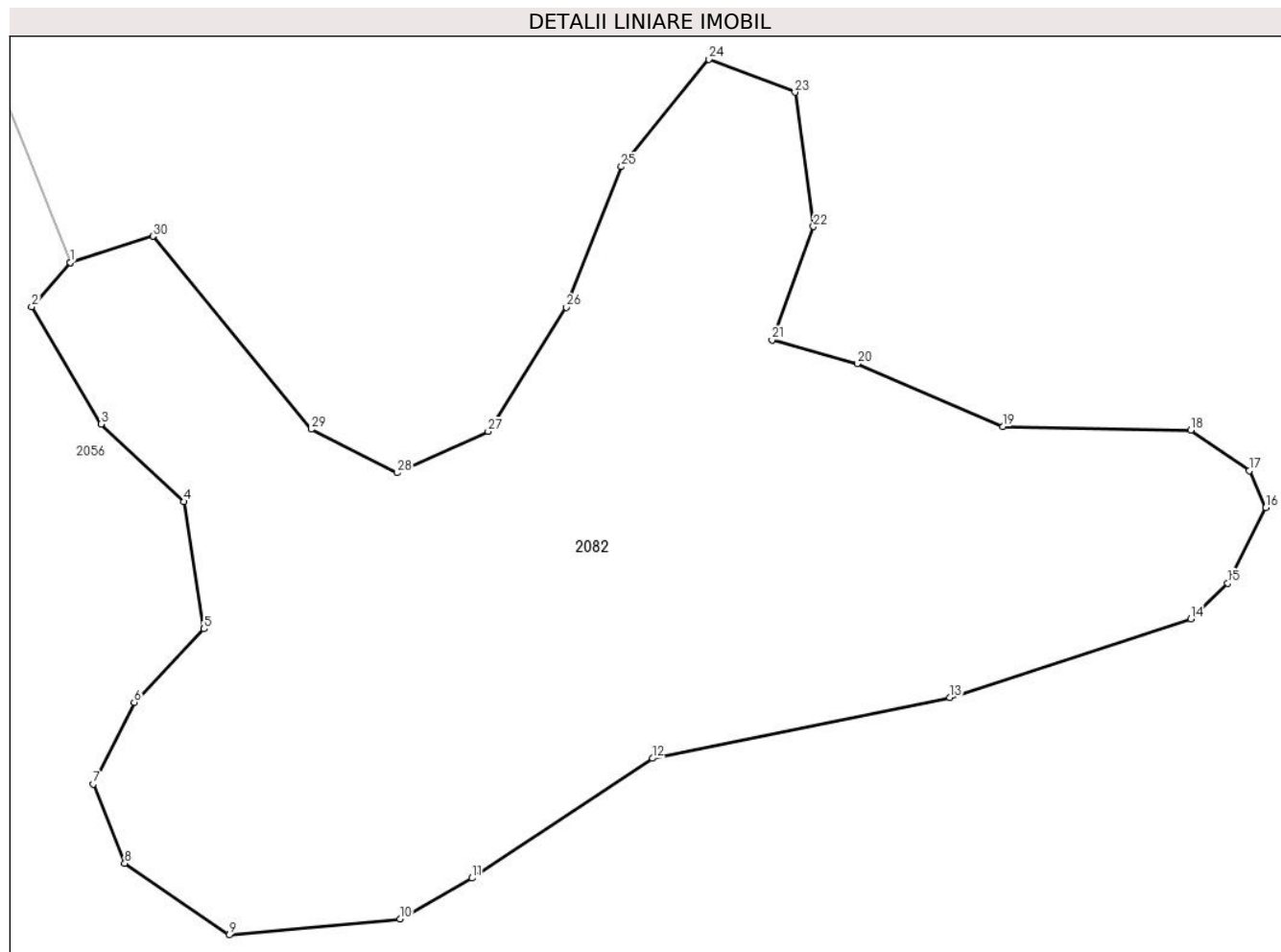
Inscrieri privind dezmembramintele dreptului de proprietate, drepturi reale de garanție și sarcini	Referințe
NU SUNT	

Anexa Nr. 1 La Partea I

Teren

Nr cadastral	Suprafața (mp)*	Observații / Referințe
101579	2.400	

* Suprafața este determinată în planul de proiecție Stereo 70.



Date referitoare la teren

Crt	Categorie folosință	Intravilan	Suprafața (mp)	Tarla	Parcelă	Nr. topo	Observații / Referințe
1	faneata	NU	2.400	112	3386	-	Teren forestier înscris în amenajamentul silvic

Lungime Segmente

1) Valorile lungimilor segmentelor sunt obținute din proiecție în plan.

Punct început	X / Y	Punct sfârșit	X / Y	Lungime segment (** (m)
1	478.256,011 483.316,162	2	478.253,312 483.313,072	4.102
3	478.258,16 483.304,857	4	478.263,966 483.299,445	7.938
5	478.265,379 483.290,556	6	478.260,489 483.285,405	7.102
7	478.257,617 483.279,698	8	478.259,833 483.274,157	5.967
9	478.267,155 483.269,155	10	478.279,103 483.270,276	12.0

Punct început	X / Y	Punct sfârșit	X / Y	Lungime segment (** (m)
2	478.253,312 483.313,072	3	478.258,16 483.304,857	9.538
4	478.263,966 483.299,445	5	478.265,379 483.290,556	9.0
6	478.260,489 483.285,405	7	478.257,617 483.279,698	6.39
8	478.259,833 483.274,157	9	478.267,155 483.269,155	8.868
10	478.279,103 483.270,276	11	478.284,127 483.273,132	5.779

Punct început	X / Y	Punct sfârșit	X / Y	Lungime segment (** (m)
11	478.284,127 483.273,132	12	478.296,753 483.281,502	15.149
13	478.317,578 483.285,738	14	478.334,445 483.291,258	17.747
15	478.337,017 483.293,748	16	478.339,683 483.299,016	5.904
17	478.338,535 483.301,616	18	478.334,427 483.304,43	4.98
19	478.321,283 483.304,698	20	478.311,086 483.309,087	11.101
21	478.305,126 483.310,739	22	478.308,035 483.318,669	8.447
23	478.306,737 483.328,066	24	478.300,708 483.330,371	6.455
25	478.294,58 483.322,858	26	478.290,74 483.313,033	10.548
27	478.285,266 483.304,35	28	478.278,908 483.301,456	6.985
29	478.272,87 483.304,502	30	478.261,798 483.317,997	17.456
31	478.256,014 483.316,163	1	478.256,011 483.316,162	0.004

Punct început	X / Y	Punct sfârșit	X / Y	Lungime segment (** (m)
12	478.296,753 483.281,502	13	478.317,578 483.285,738	21.251
14	478.334,445 483.291,258	15	478.337,017 483.293,748	3.581
16	478.339,683 483.299,016	17	478.338,535 483.301,616	2.842
18	478.334,427 483.304,43	19	478.321,283 483.304,698	13.147
20	478.311,086 483.309,087	21	478.305,126 483.310,739	6.185
22	478.308,035 483.318,669	23	478.306,737 483.328,066	9.485
24	478.300,708 483.330,371	25	478.294,58 483.322,858	9.696
26	478.290,74 483.313,033	27	478.285,266 483.304,35	10.265
28	478.278,908 483.301,456	29	478.272,87 483.304,502	6.763
30	478.261,798 483.317,997	31	478.256,014 483.316,163	6.067

** Lungimile segmentelor sunt determinate în planul de proiecție Stereo 70 și sunt rotunjite la 1 milimetru.

*** Distanța dintre puncte este formată din segmente cumulate ce sunt mai mici decât valoarea 1 milimetru.

