

**DATE DESPRE IMOBILUL NR. 1914**

Oficiul de Cadastru și Publicitate Imobiliară SIBIU
Biroul de Cadastru și Publicitate Imobiliară Agnita

A. Partea I. Descrierea imobilului

TEREN Extravilan

Adresa: Jud. Sibiu

Nr. Crt	Nr cadastral Nr. topografic	Suprafața* (mp)	Observații / Referințe
A1		1.500	Sector cadastral:100 Teren neimpregmuit;

B. Partea II. Proprietari și acte

Inscrieri privitoare la dreptul de proprietate și alte drepturi reale		Referințe
/		
Act Administrativ nr. Legea 7, din 13/03/1997 emis de PARLAMENTUL ROMANIEI (CONFORM ART.13 ALIN. 15);		
B1	Inscrierea provizorie, drept de PROPRIETATE, dobandit prin Lege, cota actuala 1/1 1) COMUNA BRUIU , CIF:4480270, Proprietar neidentificat	A1

C. Partea III. SARCINI .

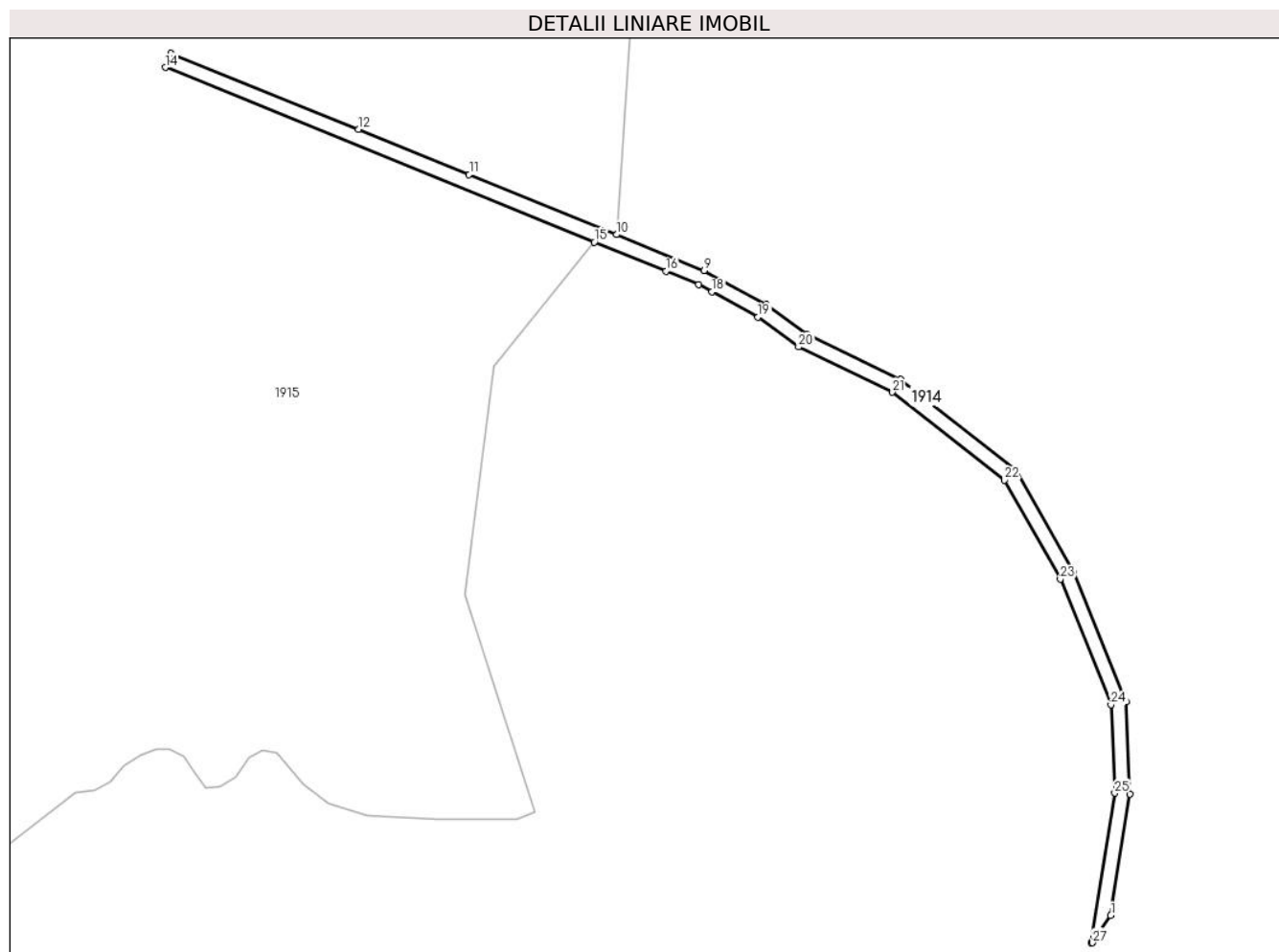
Inscrieri privind dezmembramintele dreptului de proprietate, drepturi reale de garanție și sarcini	Referințe
NU SUNT	

Anexa Nr. 1 La Partea I

Teren

Nr cadastral	Suprafața (mp)*	Observații / Referințe
	1.500	

* Suprafața este determinată în planul de proiecție Stereo 70.



Date referitoare la teren

Crt	Categorie folosință	Intravilan	Suprafața (mp)	Tarla	Parcelă	Nr. topo	Observații / Referințe
1	drum	NU	1.500	44	1328	-	

Lungime Segmente

1) Valorile lungimilor segmentelor sunt obținute din proiecție în plan.

Punct început	X / Y	Punct sfârșit	X / Y	Lungime segment (** (m)
1	475.645,91 481.708,529	2	475.650,981 481.740,475	32.345
3	475.649,895 481.764,803	4	475.636,21 481.798,69	36.545
5	475.621,005 481.825,626	6	475.590,595 481.849,52	38.675
7	475.565,832 481.861,468	8	475.555,217 481.869,245	13.159
9	475.538,92 481.878,147	10	475.515,837 481.887,544	24.922

Punct început	X / Y	Punct sfârșit	X / Y	Lungime segment (** (m)
2	475.650,981 481.740,475	3	475.649,895 481.764,803	24.353
4	475.636,21 481.798,69	5	475.621,005 481.825,626	30.931
6	475.590,595 481.849,52	7	475.565,832 481.861,468	27.494
8	475.555,217 481.869,245	9	475.538,92 481.878,147	18.57
10	475.515,837 481.887,544	11	475.477,056 481.903,332	41.872

Punct început	X / Y	Punct sfârșit	X / Y	Lungime segment (** (m)
11	475.477,056 481.903,332	12	475.447,898 481.915,203	31.482
13	475.398,626 481.935,262	14	475.397,11 481.931,55	4.01
15	475.509,979 481.885,62	16	475.528,864 481.877,935	20.389
17	475.537,407 481.874,444	18	475.540,907 481.872,504	4.002
19	475.553,067 481.865,862	20	475.563,763 481.858,024	13.261
21	475.588,465 481.846,106	22	475.617,911 481.822,97	37.449
23	475.632,599 481.796,95	24	475.645,93 481.763,941	35.6
25	475.646,967 481.740,701	26	475.640,729 481.701,403	39.791
27	475.641,089 481.701,363	1	475.645,91 481.708,529	8.638

Punct început	X / Y	Punct sfârșit	X / Y	Lungime segment (** (m)
12	475.447,898 481.915,203	13	475.398,626 481.935,262	53.198
14	475.397,11 481.931,55	15	475.509,979 481.885,62	121.857
16	475.528,864 481.877,935	17	475.537,407 481.874,444	9.228
18	475.540,907 481.872,504	19	475.553,067 481.865,862	13.855
20	475.563,763 481.858,024	21	475.588,465 481.846,106	27.427
22	475.617,911 481.822,97	23	475.632,599 481.796,95	29.878
24	475.645,93 481.763,941	25	475.646,967 481.740,701	23.263
26	475.640,729 481.701,403	27	475.641,089 481.701,363	0.362

** Lungimile segmentelor sunt determinate în planul de proiecție Stereo 70 și sunt rotunjite la 1 milimetru.

*** Distanța dintre puncte este formată din segmente cumulate ce sunt mai mici decât valoarea 1 milimetru.

**DATE DESPRE IMOBILUL NR. 1915**

Oficiul de Cadastru și Publicitate Imobiliară SIBIU
Biroul de Cadastru și Publicitate Imobiliară Agnita

A. Partea I. Descrierea imobilului

TEREN Extravilan

Adresa: Jud. Sibiu

Nr. Crt	Nr cadastral Nr. topografic	Suprafața* (mp)	Observații / Referințe
A1		128.000	Sector cadastral:100 Teren neimpregmuit;

B. Partea II. Proprietari și acte

Inscrieri privitoare la dreptul de proprietate și alte drepturi reale		Referințe
/		
Act Administrativ nr. Legea 7, din 13/03/1997 emis de PARLAMENTUL ROMANIEI (CONFORM ART.13 ALIN. 15);		
B1	Inscrierea provizorie, drept de PROPRIETATE, dobandit prin Lege, cota actuala 1/1 1) COMUNA BRUIU , CIF:4480270, Proprietar neidentificat	A1

C. Partea III. SARCINI .

Inscrieri privind dezmembramintele dreptului de proprietate, drepturi reale de garanție și sarcini	Referințe
NU SUNT	

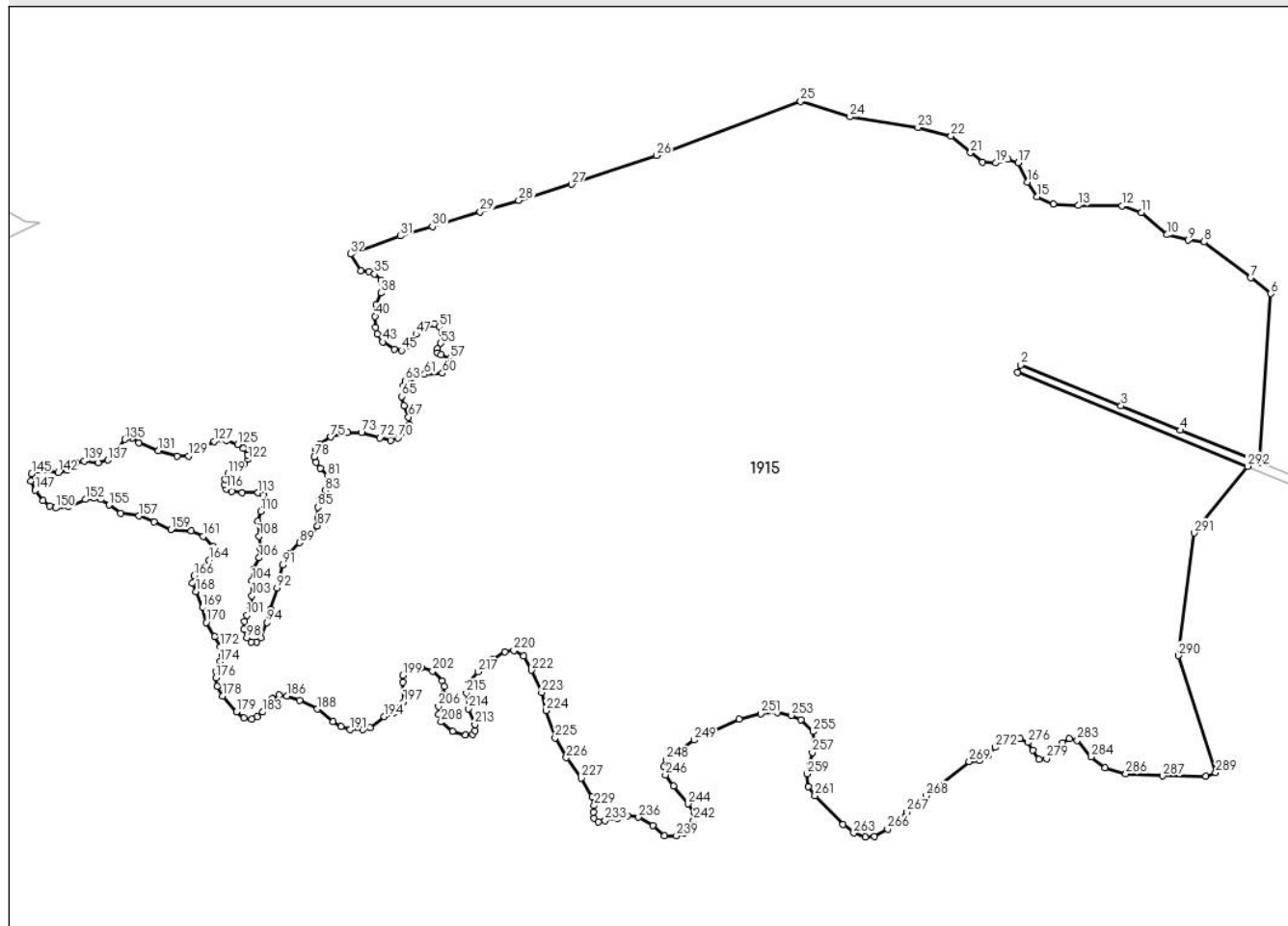
Anexa Nr. 1 La Partea I

Teren

Nr cadastral	Suprafața (mp)*	Observații / Referințe
	128.000	

* Suprafața este determinată în planul de proiecție Stereo 70.

DETALII LINIARE IMOBIL



Date referitoare la teren

Crt	Categorie folosință	Intravilan	Suprafața (mp)	Tarla	Parcelă	Nr. topo	Observații / Referințe
1	pașune	NU	128.000	44	1329/1	-	

Lungime Segmente

1) Valorile lungimilor segmentelor sunt obținute din proiecție în plan.

Punct început	X / Y	Punct sfârșit	X / Y	Lungime segment
1	475.397,11 481.931,55	2	475.398,626 481.935,262	4.01
4	475.477,056 481.903,332	5	475.515,837 481.887,544	41.87 2
7	475.511,543 481.978,044	8	475.488,518 481.995,638	28.97 8
10	475.470,488 481.999,114	11	475.457,89 482.009,975	16.63 4
13	475.427,045 482.013,45	14	475.414,663 482.014,102	12.39 9
16	475.402,065 482.024,963	17	475.397,503 482.034,521	10.59
2	475.447,898 481.915,203	3	475.447,898 481.915,203	53.19 8
5	475.515,837 481.887,544	6	475.521,275 481.970,294	82.92 8
8	475.488,518 481.995,638	9	475.480,698 481.996,507	7.868
11	475.457,89 482.009,975	12	475.448,332 482.013,233	10.09 8
14	475.414,663 482.014,102	15	475.406,843 482.017,795	8.648
17	475.397,503 482.034,521	18	475.392,507 482.036,258	5.29
3	475.447,898 481.915,203	4	475.477,056 481.903,332	31.48 2
6	475.521,275 481.970,294	7	475.511,543 481.978,044	12.44 1
9	475.480,698 481.996,507	10	475.470,488 481.999,114	10.53 7
12	475.448,332 482.013,233	13	475.427,045 482.013,45	21.28 9
15	475.406,843 482.017,795	16	475.402,065 482.024,963	8.615
18	475.392,507 482.036,258	19	475.386,425 482.034,304	6.389

Punct început	X / Y	Punct sfârșit	X / Y	Lungime segment	Punct început	X / Y	Punct sfârșit	X / Y	Lungime segment	Punct început	X / Y	Punct sfârșit	X / Y	Lungime segment
19	475.386,425 482.034,304	20	475.379,908 482.034,738	6.531	20	475.379,908 482.034,738	21	475.374,043 482.039,3	7.43	21	475.374,043 482.039,3	22	475.364,486 482.047,554	12.629
22	475.364,486 482.047,554	23	475.348,304 482.051,715	16.708	23	475.348,304 482.051,715	24	475.314,96 482.056,894	33.744	24	475.314,96 482.056,894	25	475.290,747 482.064,41	25.353
25	475.290,747 482.064,41	26	475.220,076 482.037,994	75.447	26	475.220,076 482.037,994	27	475.178,496 482.023,872	43.913	27	475.178,496 482.023,872	28	475.152,573 482.015,931	27.112
28	475.152,573 482.015,931	29	475.133,667 482.010,314	19.723	29	475.133,667 482.010,314	30	475.110,213 482.003,156	24.522	30	475.110,213 482.003,156	31	475.094,522 481.998,503	16.366
31	475.094,522 481.998,503	32	475.070,008 481.989,654	26.062	32	475.070,008 481.989,654	33	475.075,076 481.981,403	9.683	33	475.075,076 481.981,403	34	475.079,023 481.981,212	3.952
34	475.079,023 481.981,212	35	475.081,824 481.979,875	3.104	35	475.081,824 481.979,875	36	475.085,071 481.977,011	4.33	36	475.085,071 481.977,011	37	475.085,962 481.974,273	2.879
37	475.085,962 481.974,273	38	475.085,071 481.970,581	3.799	38	475.085,071 481.970,581	39	475.082,651 481.964,596	6.455	39	475.082,651 481.964,596	40	475.082,142 481.959,185	5.435
40	475.082,142 481.959,185	41	475.082,333 481.953,646	5.542	41	475.082,333 481.953,646	42	475.083,352 481.950,527	3.281	42	475.083,352 481.950,527	43	475.085,834 481.946,644	4.609
43	475.085,834 481.946,644	44	475.091,437 481.943,015	6.675	44	475.091,437 481.943,015	45	475.095,002 481.942,442	3.611	45	475.095,002 481.942,442	46	475.097,485 481.944,415	3.172
46	475.097,485 481.944,415	47	475.102,259 481.950,336	7.606	47	475.102,259 481.950,336	48	475.105,506 481.953,646	4.637	48	475.105,506 481.953,646	49	475.108,689 481.955,238	3.559
49	475.108,689 481.955,238	50	475.111,3 481.955,493	2.623	50	475.111,3 481.955,493	51	475.113,528 481.953,901	2.738	51	475.113,528 481.953,901	52	475.114,674 481.951,291	2.851
52	475.114,674 481.951,291	53	475.114,292 481.945,816	5.488	53	475.114,292 481.945,816	54	475.112,636 481.943,27	3.037	54	475.112,636 481.943,27	55	475.112,636 481.941,232	2.037
55	475.112,636 481.941,232	56	475.114,355 481.940,214	1.998	56	475.114,355 481.940,214	57	475.118,812 481.938,622	4.732	57	475.118,812 481.938,622	58	475.120,149 481.936,776	2.279
58	475.120,149 481.936,776	59	475.119,512 481.933,975	2.873	59	475.119,512 481.933,975	60	475.115,119 481.931,301	5.142	60	475.115,119 481.931,301	61	475.106,27 481.930,664	8.872
61	475.106,27 481.930,664	62	475.100,54 481.929,391	5.869	62	475.100,54 481.929,391	63	475.097,039 481.927,608	3.929	63	475.097,039 481.927,608	64	475.096,02 481.925,189	2.625
64	475.096,02 481.925,189	65	475.095,193 481.919,842	5.411	65	475.095,193 481.919,842	66	475.096,275 481.915,385	4.586	66	475.096,275 481.915,385	67	475.098,503 481.909,719	6.088
67	475.098,503 481.909,719	68	475.098,885 481.906,218	3.522	68	475.098,885 481.906,218	69	475.097,93 481.902,716	3.629	69	475.097,93 481.902,716	70	475.093,474 481.899,597	5.44
70	475.093,474 481.899,597	71	475.089,718 481.898,324	3.966	71	475.089,718 481.898,324	72	475.084,561 481.899,597	5.311	72	475.084,561 481.899,597	73	475.075,394 481.902,08	9.498
73	475.075,394 481.902,08	74	475.068,646 481.902,271	6.751	74	475.068,646 481.902,271	75	475.060,37 481.900,043	8.571	75	475.060,37 481.900,043	76	475.055,086 481.896,669	6.269
76	475.055,086 481.896,669	77	475.053,239 481.893,995	3.249	77	475.053,239 481.893,995	78	475.052,348 481.890,239	3.86	78	475.052,348 481.890,239	79	475.053,303 481.887,628	2.779
79	475.053,303 481.887,628	80	475.055,34 481.884,7	3.567	80	475.055,34 481.884,7	81	475.058,842 481.881,008	5.089	81	475.058,842 481.881,008	82	475.059,287 481.878,016	3.025
82	475.059,287 481.878,016	83	475.057,696 481.873,814	4.493	83	475.057,696 481.873,814	84	475.054,64 481.869,23	5.509	84	475.054,64 481.869,23	85	475.053,94 481.865,665	3.633
85	475.053,94 481.865,665	86	475.054,194 481.860,126	5.544	86	475.054,194 481.860,126	87	475.053,876 481.856,434	3.706	87	475.053,876 481.856,434	88	475.051,52 481.853,187	4.011
88	475.051,52 481.853,187	89	475.045,09 481.848,221	8.124	89	475.045,09 481.848,221	90	475.039,934 481.842,556	7.661	90	475.039,934 481.842,556	91	475.036,814 481.837,208	6.191
91	475.036,814 481.837,208	92	475.034,013 481.825,94	11.611	92	475.034,013 481.825,94	93	475.030,958 481.815,69	10.696	93	475.030,958 481.815,69	94	475.029,175 481.809,133	6.795
94	475.029,175 481.809,133	95	475.026,056 481.801,62	8.134	95	475.026,056 481.801,62	96	475.024,018 481.799,583	2.881	96	475.024,018 481.799,583	97	475.021,408 481.799,52	2.611
97	475.021,408 481.799,52	98	475.019,18 481.801,557	3.019	98	475.019,18 481.801,557	99	475.017,843 481.805,695	4.349	99	475.017,843 481.805,695	100	475.018,161 481.809,642	3.96
100	475.018,161 481.809,642	101	475.019,371 481.812,634	3.227	101	475.019,371 481.812,634	102	475.020,962 481.816,772	4.434	102	475.020,962 481.816,772	103	475.021,726 481.822,12	5.402
103	475.021,726 481.822,12	104	475.021,726 481.829,441	7.321	104	475.021,726 481.829,441	105	475.022,49 481.835,362	5.97	105	475.022,49 481.835,362	106	475.025,228 481.840,773	6.064
106	475.025,228 481.840,773	107	475.025,864 481.845,229	4.502	107	475.025,864 481.845,229	108	475.025,228 481.851,277	6.081	108	475.025,228 481.851,277	109	475.024,719 481.858,726	7.466
109	475.024,719 481.858,726	110	475.026,056 481.863,628	5.081	110	475.026,056 481.863,628	111	475.027,774 481.867,702	4.422	111	475.027,774 481.867,702	112	475.027,4 481.871,595	3.911
112	475.027,4 481.871,595	113	475.024,719 481.872,668	2.888	113	475.024,719 481.872,668	114	475.016,952 481.872,604	7.767	114	475.016,952 481.872,604	115	475.011,795 481.873,177	5.188
115	475.011,795 481.873,177	116	475.009,121 481.874,514	2.989	116	475.009,121 481.874,514	117	475.008,23 481.876,742	2.4	117	475.008,23 481.876,742	118	475.008,548 481.879,352	2.63

Punct început	X / Y	Punct sfârșit	X / Y	Lungime segment	Punct început	X / Y	Punct sfârșit	X / Y	Lungime segment	Punct început	X / Y	Punct sfârșit	X / Y	Lungime segment
118	475.008,548 481.879,352	119	475.009,885 481.881,835	2.82	119	475.009,885 481.881,835	120	475.015,36 481.885,846	6.787	120	475.015,36 481.885,846	121	475.017,97 481.886,928	2.826
121	475.017,97 481.886,928	122	475.019,944 481.889,029	2.883	122	475.019,944 481.889,029	123	475.019,626 481.891,194	2.188	123	475.019,626 481.891,194	124	475.017,334 481.894,313	3.871
124	475.017,334 481.894,313	125	475.014,66 481.896,35	3.361	125	475.014,66 481.896,35	126	475.008,994 481.898,387	6.021	126	475.008,994 481.898,387	127	475.003,201 481.897,878	5.816
127	475.003,201 481.897,878	128	474.997,535 481.894,249	6.728	128	474.997,535 481.894,249	129	474.990,659 481.890,684	7.745	129	474.990,659 481.890,684	130	474.985,12 481.890,684	5.539
130	474.985,12 481.890,684	131	474.975,762 481.893,294	9.716	131	474.975,762 481.893,294	132	474.966,276 481.897,114	10.226	132	474.966,276 481.897,114	133	474.962,966 481.899,406	4.026
133	474.962,966 481.899,406	134	474.961,056 481.899,788	1.948	134	474.961,056 481.899,788	135	474.959,337 481.898,833	1.966	135	474.959,337 481.898,833	136	474.955,9 481.893,104	6.682
136	474.955,9 481.893,104	137	474.951,061 481.888,711	6.535	137	474.951,061 481.888,711	138	474.946,286 481.887,438	4.942	138	474.946,286 481.887,438	139	474.939,411 481.888,202	6.918
139	474.939,411 481.888,202	140	474.935,464 481.887,246	4.061	140	474.935,464 481.887,246	141	474.931,198 481.883,809	5.478	141	474.931,198 481.883,809	142	474.926,742 481.882,663	4.601
142	474.926,742 481.882,663	143	474.920,949 481.883,745	5.894	143	474.920,949 481.883,745	144	474.916,492 481.883,745	4.456	144	474.916,492 481.883,745	145	474.913,755 481.882,026	3.232
145	474.913,755 481.882,026	146	474.913,309 481.878,397	3.656	146	474.913,309 481.878,397	147	474.915,41 481.873,877	4.984	147	474.915,41 481.873,877	148	474.919,357 481.868,784	6.443
148	474.919,357 481.868,784	149	474.922,477 481.866,174	4.067	149	474.922,477 481.866,174	150	474.925,469 481.865,219	3.141	150	474.925,469 481.865,219	151	474.931,644 481.865,792	6.202
151	474.931,644 481.865,792	152	474.940,111 481.869,357	9.187	152	474.940,111 481.869,357	153	474.944,377 481.869,994	4.313	153	474.944,377 481.869,994	154	474.947,623 481.869,421	3.297
154	474.947,623 481.869,421	155	474.951,57 481.866,684	4.803	155	474.951,57 481.866,684	156	474.957,491 481.862,736	7.116	156	474.957,491 481.862,736	157	474.966,34 481.861,336	8.959
157	474.966,34 481.861,336	158	474.973,598 481.858,344	7.85	158	474.973,598 481.858,344	159	474.982,001 481.854,651	9.179	159	474.982,001 481.854,651	160	474.991,996 481.853,887	10.024
160	474.991,996 481.853,887	161	474.997,853 481.851,277	6.412	161	474.997,853 481.851,277	162	475.002,755 481.846,248	7.023	162	475.002,755 481.846,248	163	475.003,01 481.842,938	3.32
163	475.003,01 481.842,938	164	475.000,654 481.839,754	3.96	164	475.000,654 481.839,754	165	474.995,498 481.835,744	6.533	165	474.995,498 481.835,744	166	474.993,333 481.832,051	4.28
166	474.993,333 481.832,051	167	474.992,378 481.828,231	3.937	167	474.992,378 481.828,231	168	474.994,288 481.824,221	4.442	168	474.994,288 481.824,221	169	474.997,471 481.816,39	8.453
169	474.997,471 481.816,39	170	474.999,317 481.809,133	7.489	170	474.999,317 481.809,133	171	475.003,519 481.802,321	8.004	171	475.003,519 481.802,321	172	475.006,256 481.797,228	5.782
172	475.006,256 481.797,228	173	475.006,957 481.793,153	4.134	173	475.006,957 481.793,153	174	475.006,129 481.789,843	3.412	174	475.006,129 481.789,843	175	475.004,156 481.785,068	5.166
175	475.004,156 481.785,068	176	475.004,092 481.781,885	3.184	176	475.004,092 481.781,885	177	475.004,729 481.777,684	4.25	177	475.004,729 481.777,684	178	475.007,466 481.773,1	5.339
178	475.007,466 481.773,1	179	475.014,151 481.765,269	10.296	179	475.014,151 481.765,269	180	475.017,843 481.762,277	4.753	180	475.017,843 481.762,277	181	475.021,663 481.761,832	3.846
181	475.021,663 481.761,832	182	475.024,273 481.762,786	2.779	182	475.024,273 481.762,786	183	475.027,01 481.765,206	3.653	183	475.027,01 481.765,206	184	475.031,785 481.771,699	8.06
184	475.031,785 481.771,699	185	475.035,032 481.773,482	3.704	185	475.035,032 481.773,482	186	475.038,852 481.773,1	3.839	186	475.038,852 481.773,1	187	475.045,09 481.770,999	6.583
187	475.045,09 481.770,999	188	475.053,812 481.766,67	9.737	188	475.053,812 481.766,67	189	475.061,516 481.760,495	9.873	189	475.061,516 481.760,495	190	475.065,335 481.758,075	4.521
190	475.065,335 481.758,075	191	475.069,983 481.756,548	4.892	191	475.069,983 481.756,548	192	475.076,158 481.756,548	6.175	192	475.076,158 481.756,548	193	475.079,659 481.757,439	3.613
193	475.079,659 481.757,439	194	475.086,598 481.762,977	8.879	194	475.086,598 481.762,977	195	475.090,928 481.764,76	4.682	195	475.090,928 481.764,76	196	475.094,111 481.767,37	4.116
196	475.094,111 481.767,37	197	475.096,02 481.770,171	3.39	197	475.096,02 481.770,171	198	475.095,702 481.779,784	9.618	198	475.095,702 481.779,784	199	475.095,766 481.783,222	3.438
199	475.095,766 481.783,222	200	475.098,121 481.786,342	3.909	200	475.098,121 481.786,342	201	475.104,551 481.786,914	6.455	201	475.104,551 481.786,914	202	475.110,281 481.785,323	5.947
202	475.110,281 481.785,323	203	475.114,928 481.780,357	6.801	203	475.114,928 481.780,357	204	475.116,074 481.777,62	2.968	204	475.116,074 481.777,62	205	475.115,756 481.773,927	3.706
205	475.115,756 481.773,927	206	475.113,209 481.767,943	6.504	206	475.113,209 481.767,943	207	475.113,209 481.763,932	4.011	207	475.113,209 481.763,932	208	475.114,483 481.760,367	3.786
208	475.114,483 481.760,367	209	475.120,085 481.755,847	7.198	209	475.120,085 481.755,847	210	475.126,515 481.753,81	6.745	210	475.126,515 481.753,81	211	475.130,08 481.754,319	3.601
211	475.130,08 481.754,319	212	475.131,162 481.756,166	2.14	212	475.131,162 481.756,166	213	475.131,035 481.759,158	2.995	213	475.131,035 481.759,158	214	475.127,979 481.766,797	8.228
214	475.127,979 481.766,797	215	475.126,897 481.774,628	7.905	215	475.126,897 481.774,628	216	475.127,979 481.779,657	5.144	216	475.127,979 481.779,657	217	475.132,563 481.784,877	6.947

Punct început	X / Y	Punct sfârșit	X / Y	Lungime segment	Punct început	X / Y	Punct sfârșit	X / Y	Lungime segment	Punct început	X / Y	Punct sfârșit	X / Y	Lungime segment
217	475.132,563 481.784,877	218	475.139,438 481.790,798	9.073	218	475.139,438 481.790,798	219	475.145,677 481.794,745	7.383	219	475.145,677 481.794,745	220	475.150,197 481.795,318	4.556
220	475.150,197 481.795,318	221	475.154,845 481.792,517	5.426	221	475.154,845 481.792,517	222	475.158,792 481.785,705	7.873	222	475.158,792 481.785,705	223	475.163,757 481.774,755	12.023
223	475.163,757 481.774,755	224	475.165,922 481.765,842	9.172	224	475.165,922 481.765,842	225	475.170,442 481.752,537	14.052	225	475.170,442 481.752,537	226	475.175,853 481.742,796	11.143
226	475.175,853 481.742,796	227	475.183,111 481.732,801	12.352	227	475.183,111 481.732,801	228	475.188,462 481.723,495	10.735	228	475.188,462 481.723,495	229	475.189,497 481.719,335	4.287
229	475.189,497 481.719,335	230	475.189,072 481.716,11	3.253	230	475.189,072 481.716,11	231	475.189,497 481.713,139	3.001	231	475.189,497 481.713,139	232	475.191,449 481.711,356	2.644
232	475.191,449 481.711,356	233	475.194,929 481.711,951	3.531	233	475.194,929 481.711,951	234	475.200,956 481.713,309	6.178	234	475.200,956 481.713,309	235	475.205,964 481.714,412	5.128
235	475.205,964 481.714,412	236	475.211,312 481.713,648	5.402	236	475.211,312 481.713,648	237	475.218,272 481.709,659	8.023	237	475.218,272 481.709,659	238	475.224,044 481.704,651	7.642
238	475.224,044 481.704,651	239	475.229,901 481.704,566	5.858	239	475.229,901 481.704,566	240	475.233,382 481.705,924	3.736	240	475.233,382 481.705,924	241	475.236,692 481.707,876	3.843
241	475.236,692 481.707,876	242	475.238,305 481.712,036	4.461	242	475.238,305 481.712,036	243	475.238,474 481.715,855	3.823	243	475.238,474 481.715,855	244	475.235,504 481.720,184	5.25
244	475.235,504 481.720,184	245	475.228,373 481.728,842	11.216	245	475.228,373 481.728,842	246	475.224,469 481.734,445	6.829	246	475.224,469 481.734,445	247	475.223,705 481.738,349	3.979
247	475.223,705 481.738,349	248	475.224,893 481.741,745	3.597	248	475.224,893 481.741,745	249	475.238,559 481.751,506	16.794	249	475.238,559 481.751,506	250	475.260,714 481.761,692	24.384
250	475.260,714 481.761,692	251	475.271,24 481.764,324	10.849	251	475.271,24 481.764,324	252	475.279,303 481.765,003	8.092	252	475.279,303 481.765,003	253	475.286,179 481.763,56	7.025
253	475.286,179 481.763,56	254	475.290,932 481.761,522	5.172	254	475.290,932 481.761,522	255	475.296,874 481.755,666	8.343	255	475.296,874 481.755,666	256	475.297,553 481.750,742	4.97
256	475.297,553 481.750,742	257	475.296,535 481.745,31	5.527	257	475.296,535 481.745,31	258	475.295,177 481.739,707	5.765	258	475.295,177 481.739,707	259	475.293,988 481.734,869	4.982
259	475.293,988 481.734,869	260	475.294,498 481.728,758	6.133	260	475.294,498 481.728,758	261	475.297,808 481.724,259	5.586	261	475.297,808 481.724,259	262	475.311,474 481.710,083	19.69
262	475.311,474 481.710,083	263	475.316,822 481.705,924	6.775	263	475.316,822 481.705,924	264	475.322,424 481.703,972	5.933	264	475.322,424 481.703,972	265	475.327,008 481.704,226	4.591
265	475.327,008 481.704,226	266	475.333,374 481.707,791	7.296	266	475.333,374 481.707,791	267	475.342,881 481.716,195	12.689	267	475.342,881 481.716,195	268	475.352,218 481.724,259	12.337
268	475.352,218 481.724,259	269	475.373,439 481.740,896	26.965	269	475.373,439 481.740,896	270	475.378,447 481.741,405	5.034	270	475.378,447 481.741,405	271	475.382,606 481.743,782	4.79
271	475.382,606 481.743,782	272	475.386,256 481.747,856	5.47	272	475.386,256 481.747,856	273	475.390,585 481.750,827	5.25	273	475.390,585 481.750,827	274	475.394,66 481.752,27	4.322
274	475.394,66 481.752,27	275	475.398,225 481.752,27	3.565	275	475.398,225 481.752,27	276	475.402,13 481.750,318	4.366	276	475.402,13 481.750,318	277	475.404,676 481.746,498	4.591
277	475.404,676 481.746,498	278	475.407,647 481.742,084	5.321	278	475.407,647 481.742,084	279	475.411,382 481.742,339	3.743	279	475.411,382 481.742,339	280	475.415,796 481.745,055	5.183
280	475.415,796 481.745,055	281	475.419,106 481.749,978	5.933	281	475.419,106 481.749,978	282	475.422,586 481.752,1	4.076	282	475.422,586 481.752,1	283	475.426,491 481.751,336	3.979
283	475.426,491 481.751,336	284	475.433,282 481.743,188	10.607	284	475.433,282 481.743,188	285	475.439,987 481.737,84	8.577	285	475.439,987 481.737,84	286	475.450,258 481.734,869	10.692
286	475.450,258 481.734,869	287	475.468,338 481.733,935	18.104	287	475.468,338 481.733,935	288	475.489,559 481.733,766	21.221	288	475.489,559 481.733,766	289	475.494,228 481.735,633	5.028
289	475.494,228 481.735,633	290	475.476,026 481.792,868	60.06	290	475.476,026 481.792,868	291	475.483,726 481.853,002	60.624	291	475.483,726 481.853,002	292	475.509,979 481.885,62	41.871
292	475.509,979 481.885,62	1	475.397,11 481.931,55	121.857										

** Lungimile segmentelor sunt determinate în planul de proiecție Stereo 70 și sunt rotunjite la 1 milimetru.

*** Distanța dintre puncte este formată din segmente cumulate ce sunt mai mici decât valoarea 1 milimetru.

