

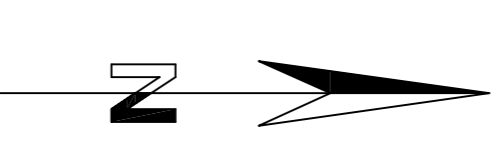
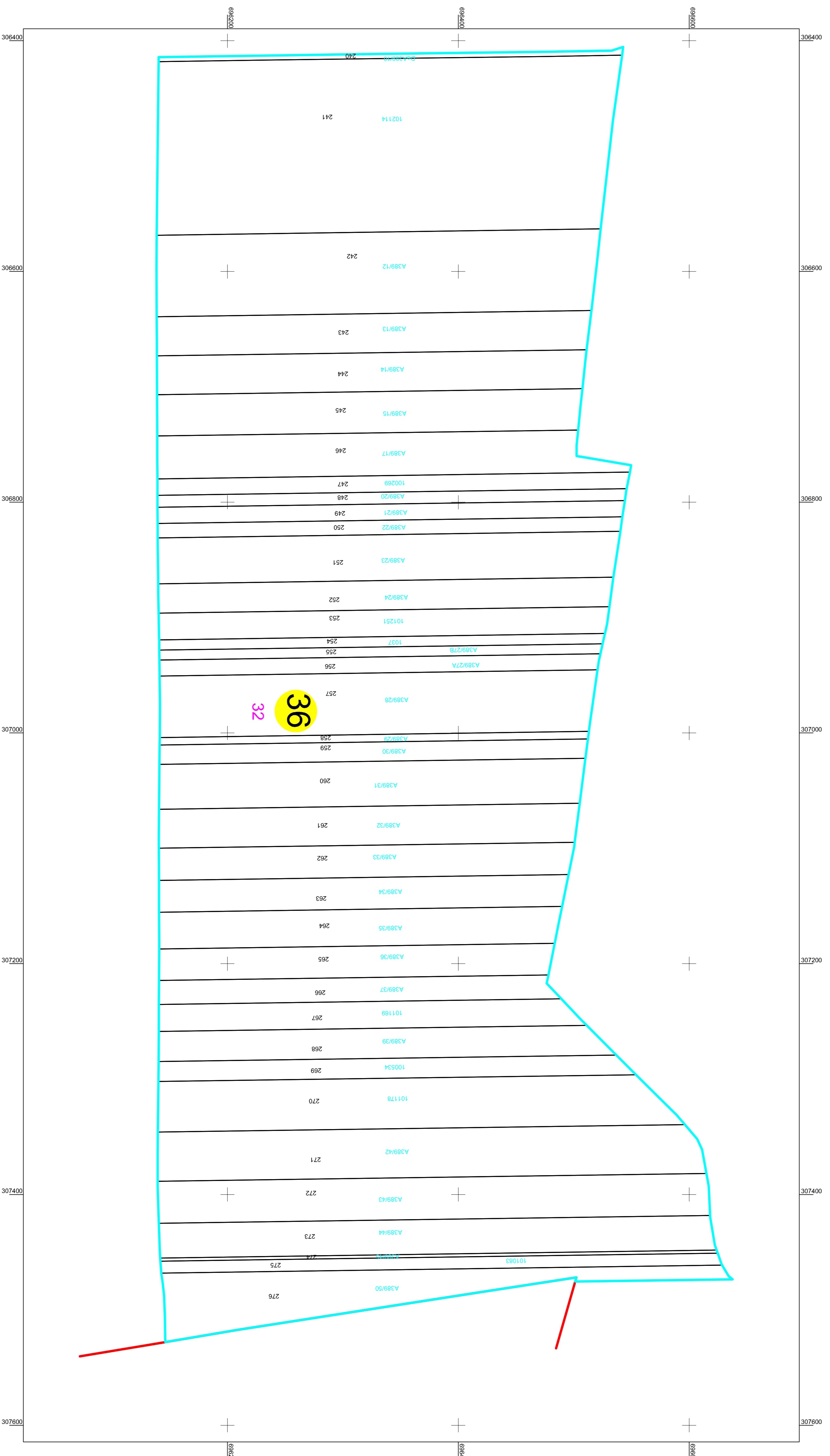
PLAN CADASTRAL

U.A.T. Urziceni, județului: SATU MARE, Sect. cad. 36

Scara 1:2000

Sistem de Proiecție Stereografic 1970

Copie spre Publicare



LEGENDA	
Numar Sector	36
ID imobil	272
Limita sector	
Limita imobil	
Limita UAT	
Limita intravilan	
Numar topografic	389/37
Numar tarla	109
Carolaj	+

Comuna Urziceni, Jud. Satu Mare
Urziceni nr. 238
CUI 3963676
Primar: Schipar Titus

Executie: Ing. KOZMATION ALEXANDRU
Casa B sefa ROSARIU nr. 00782012
OCOT TOPO CAO SRL
Casa III sefa ROSARIU nr. 17323009