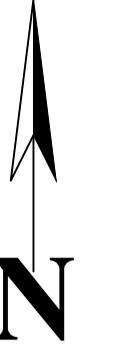


PLAN CADASTRAL

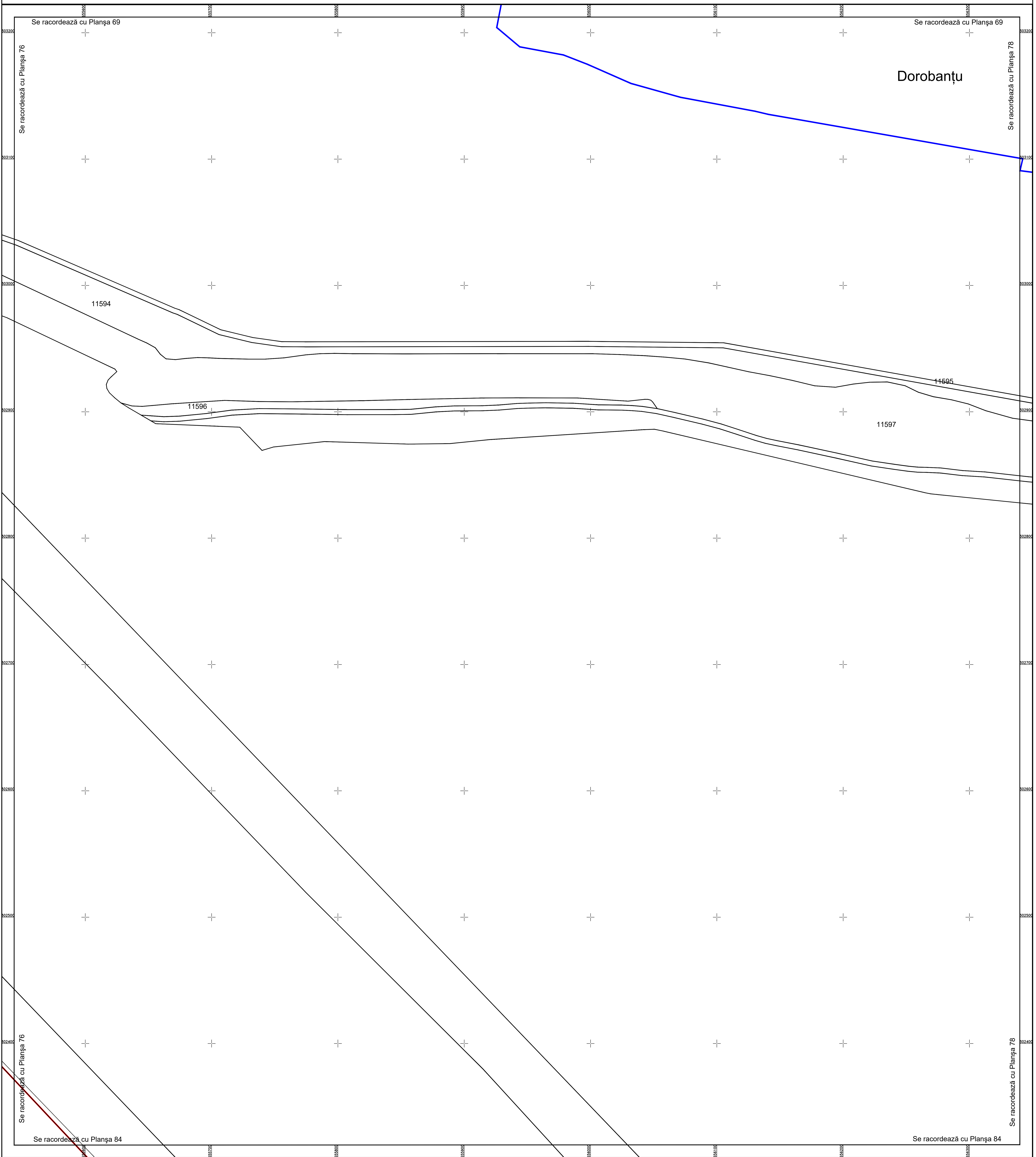
U.A.T. Dorobanțu, județul CĂLĂRAȘI, Sectoarele Cadastrale: 0, 40, 42, 46

Scara 1:1000

Sistem de proiecție STEREO' 1970



Planșa 77

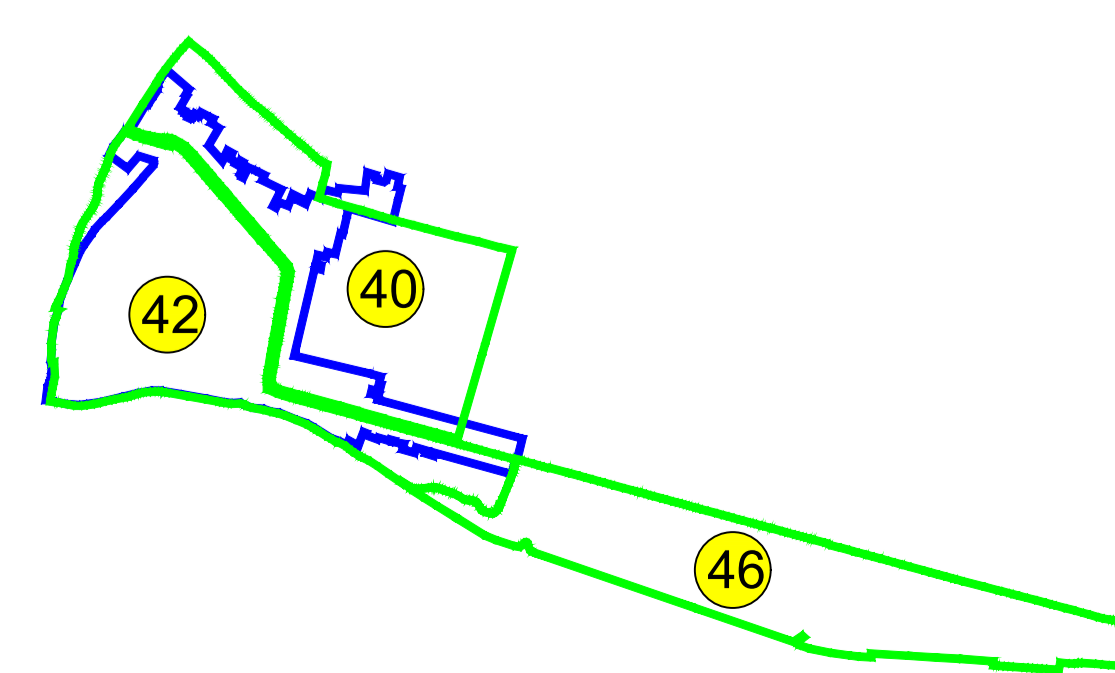
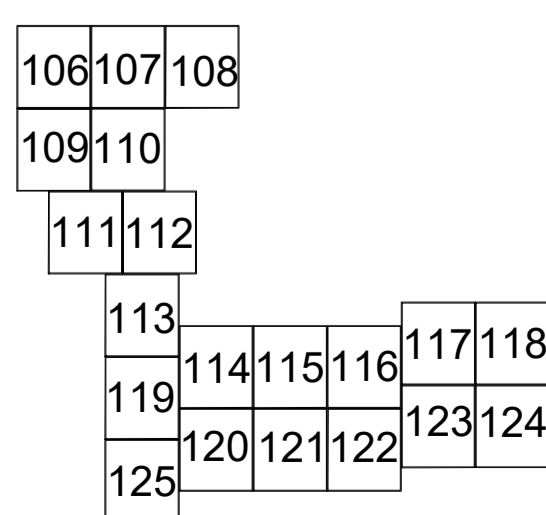
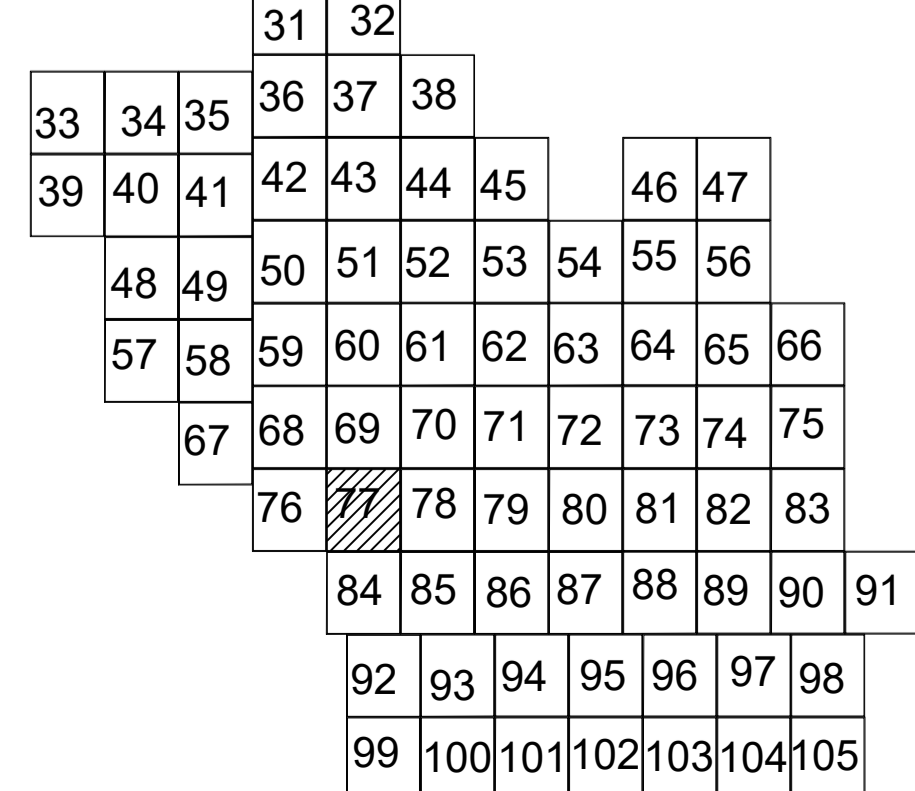
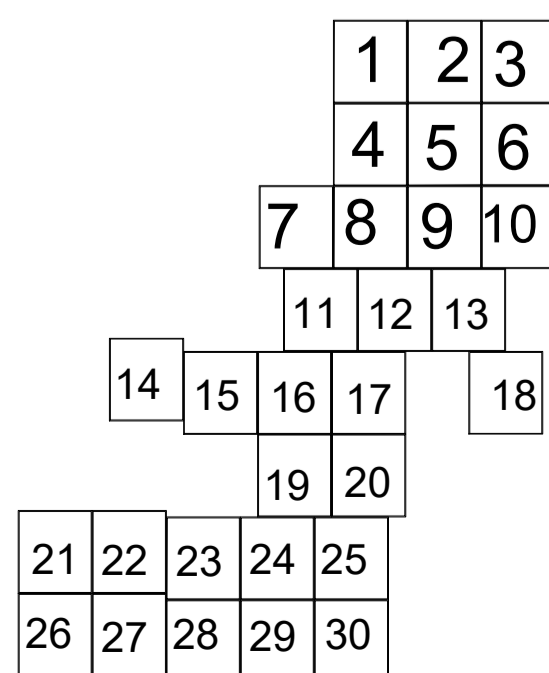


Schema de racordare a planșelor

Schița cu dispunerea sectoarelor cadastrale

LEGENDĂ:

Data: februarie 2024
 SC Komora
 Engineering
 SRL



- Limită UAT
- Limită sector cadastral
- Limită intravilan
- Limită tarla
- Limită imobil
- Limită drum
- Limită construcții
- 1 Număr construcții
- CV32 Număr tarla
- 40 Număr sector cadastral
- 6248 ID imobil