

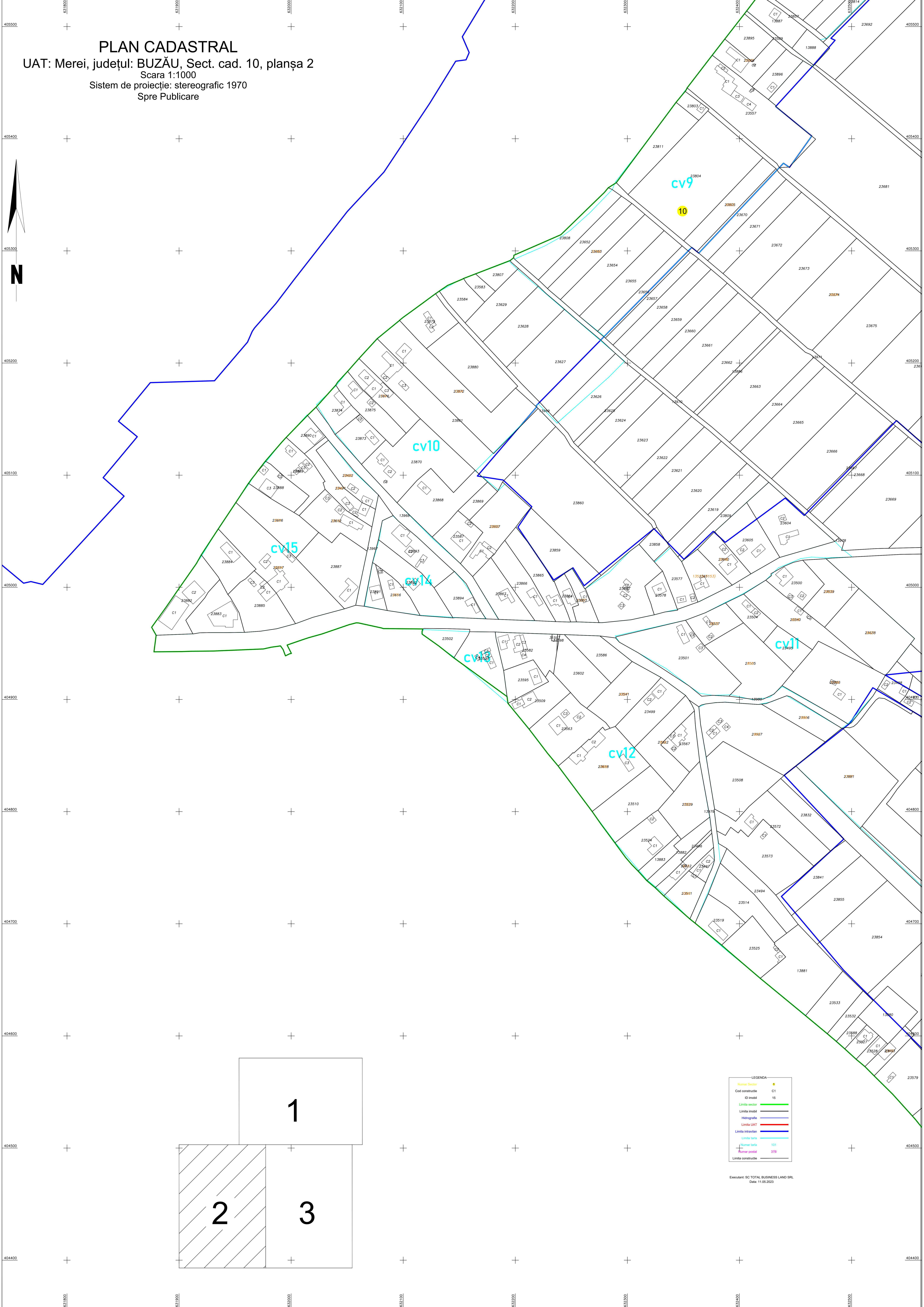
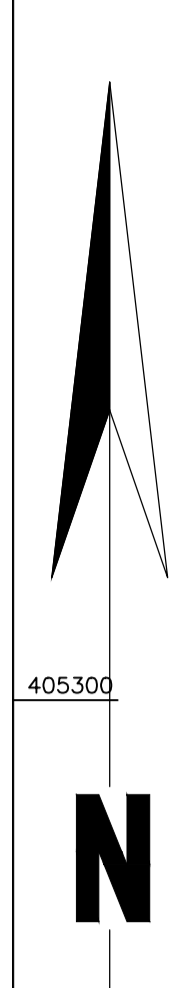
# PLAN CADASTRAL

UAT: Merei, județul: BUZĂU, Sect. cad. 10, planșa 2

Scara 1:1000

Sistem de proiecție: stereografic 1970

Spre Publicare



1

2

3

LEGENDA	
Linia taris	101
Cod constructia	C1
ID imobil	15
Limta sector	—
Limta imobil	—
Hidografie	—
Limta UAT	—
Limta intravilan	—
Limta taris	—
Numar taris	101
Numar postal	37B
Limta constructie	—

Executant: SC TOTAL BUSINESS LAND SRL  
Data: 11.05.2023