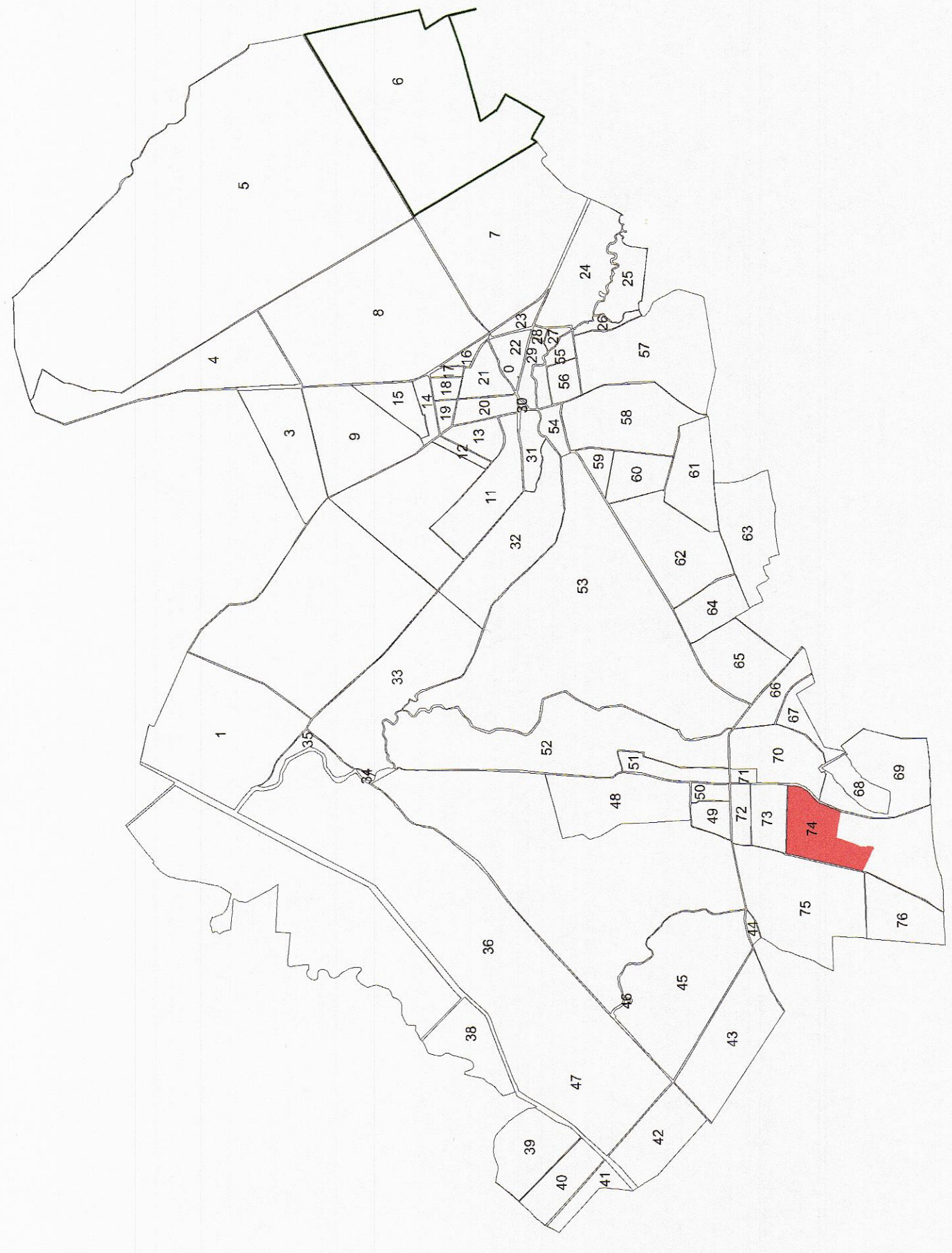
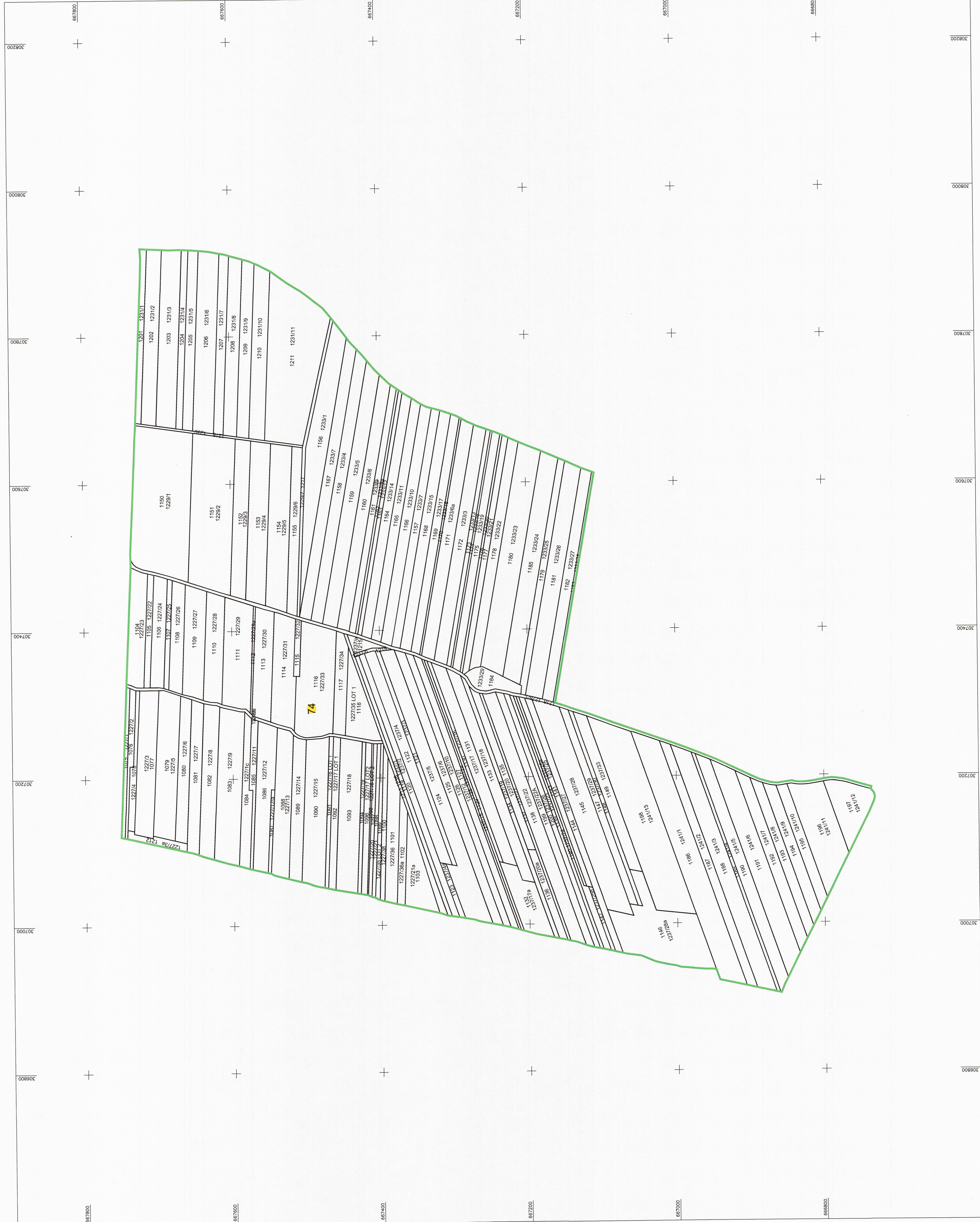


PLAN CADASTRAL
UAT: Santau, judetul: SATU MARE, Sect. cad. 74, plansa 9
 Scara 1:2000
 Sistem de proiectie: stereografic 1970
 Spre Publicare



LEGENDA

Numar Sector	15
Cod constructie	C1
ID Imobil	15
Limite sector	
Limite imobil	
Hidrografe	
Limite UAT	
Limite intravilan	
Limite tarla	
Numar tarla	101
Numar posesor	378
Limite constructie	

Official stamps and signatures of the cadastral office. The stamps include the logo of the Ministry of Agriculture and Rural Development of Romania and the specific office name: 'CANTONUL SANTIU MARE, JUDEȚUL SATU MARE, SECȚIA CADASTRU 74'. There are two blue ink signatures and a date stamp: 'Data: 24.08.2023'.

Coordonata Referențială: 667500
 AX: 667500, AY: 307200, Nr. 015/198.02.2019
 Data: 24.08.2023