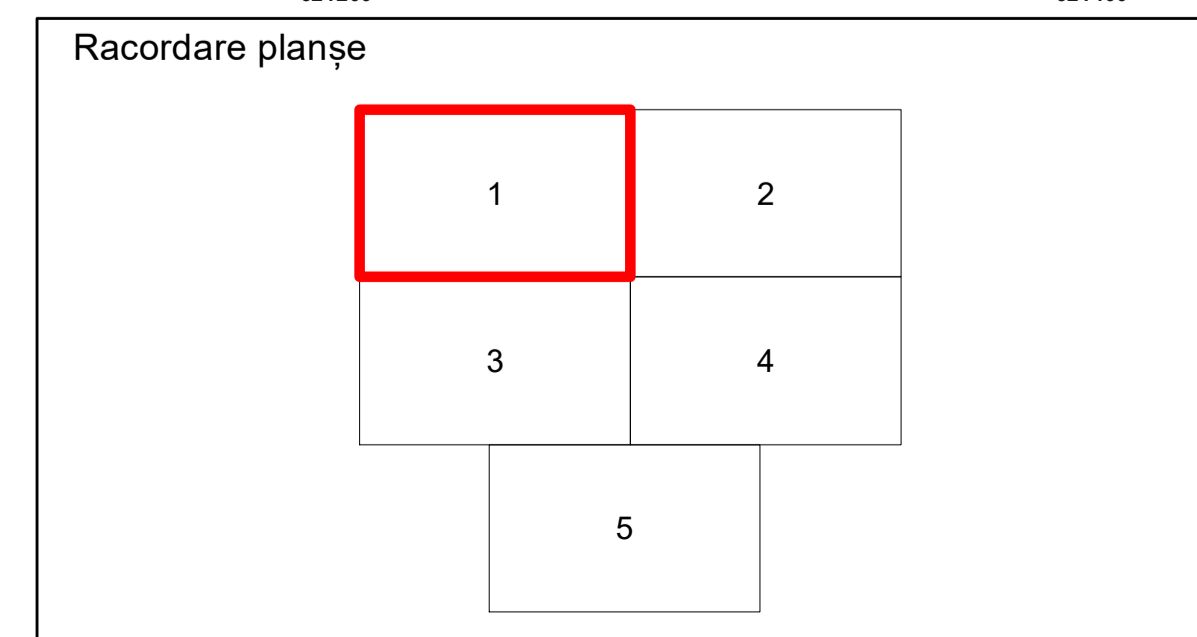
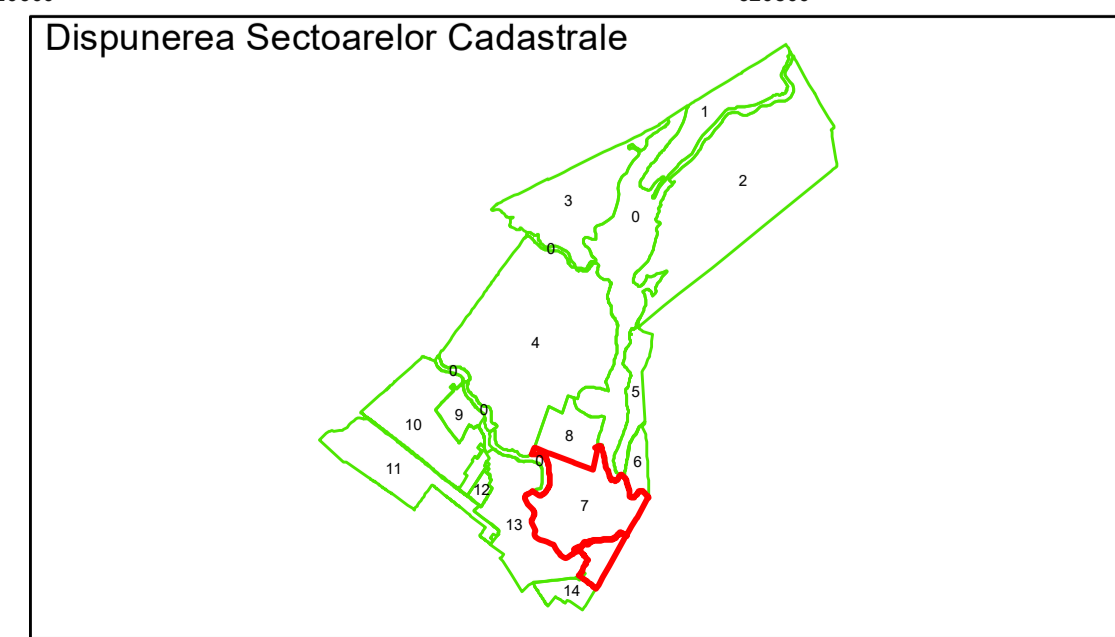
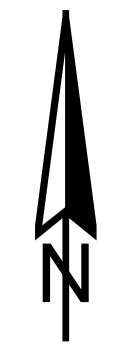
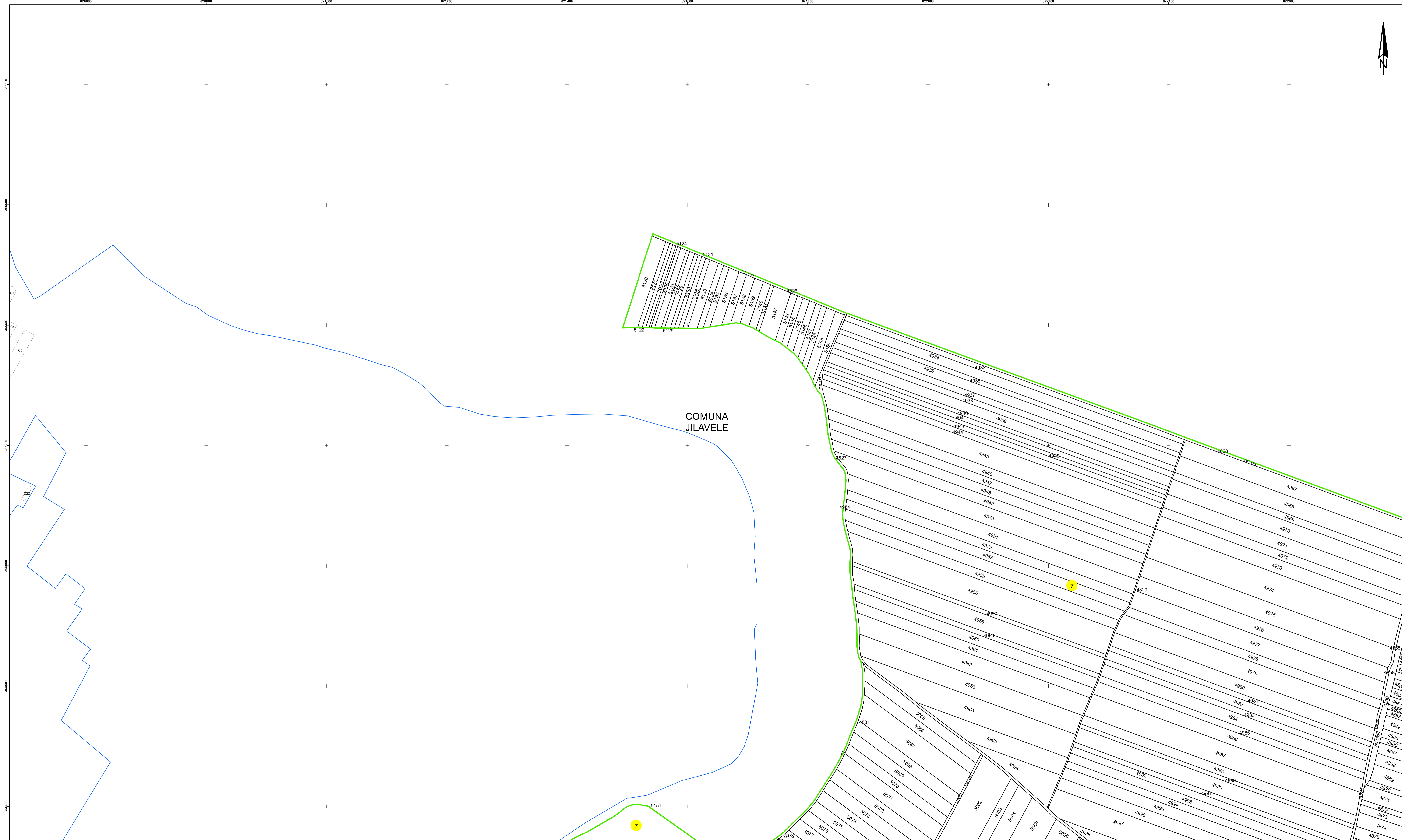


PLAN CADASTRAL
 Comuna Jilavele, județul Ialomița, Sector Cadastral 7
 Scara 1:2000, sistem de proiecție STEREO 70

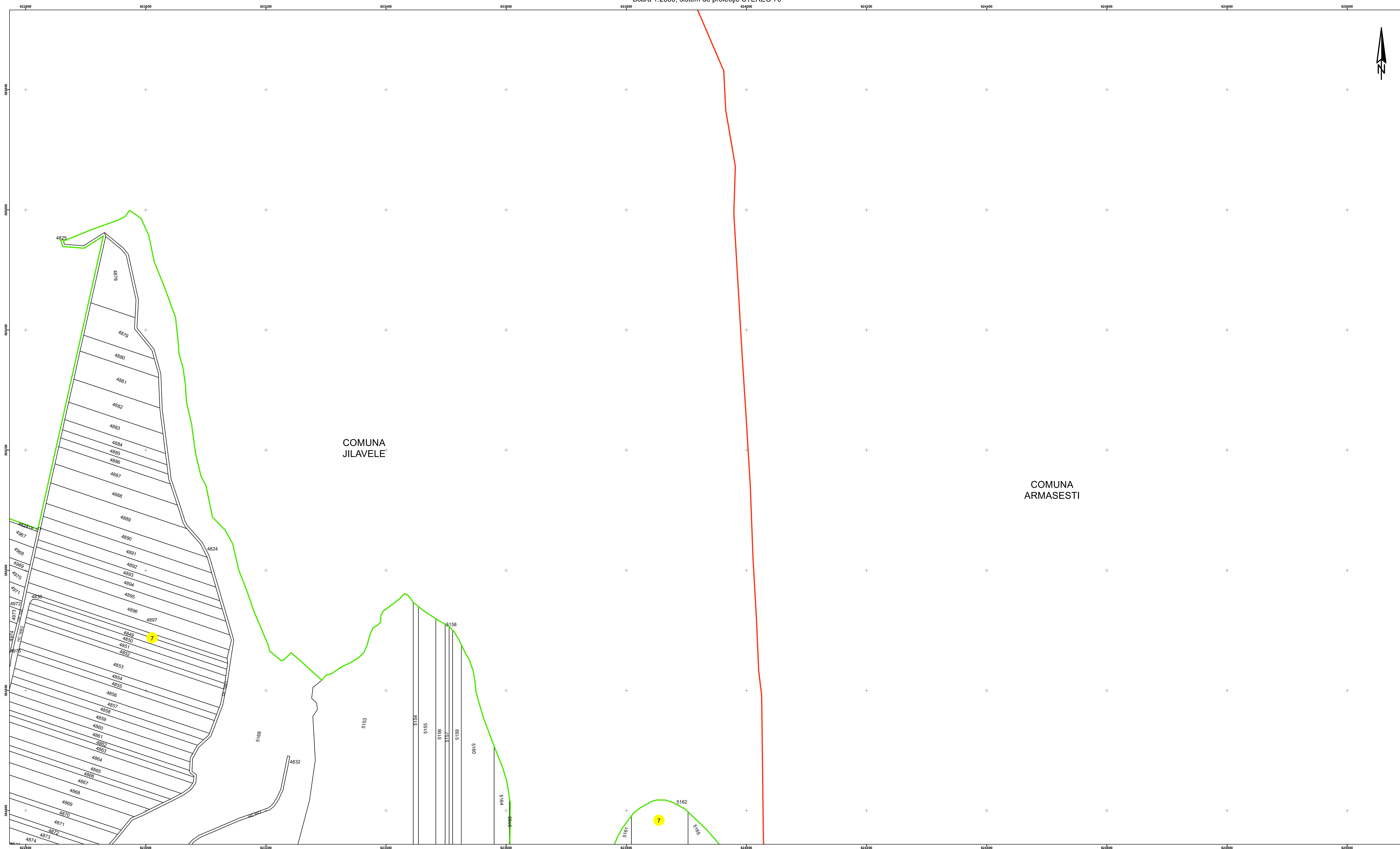


- Legendă**
- Limită UAT
 - Limită Intravilan
 - Sector Cadastral
 - Limită Imobil
 - Construcție
 - 7 Număr Sector Cadastral
 - 458 Identificator Teren

Executant: SC TOPOSOFT CAD SRL

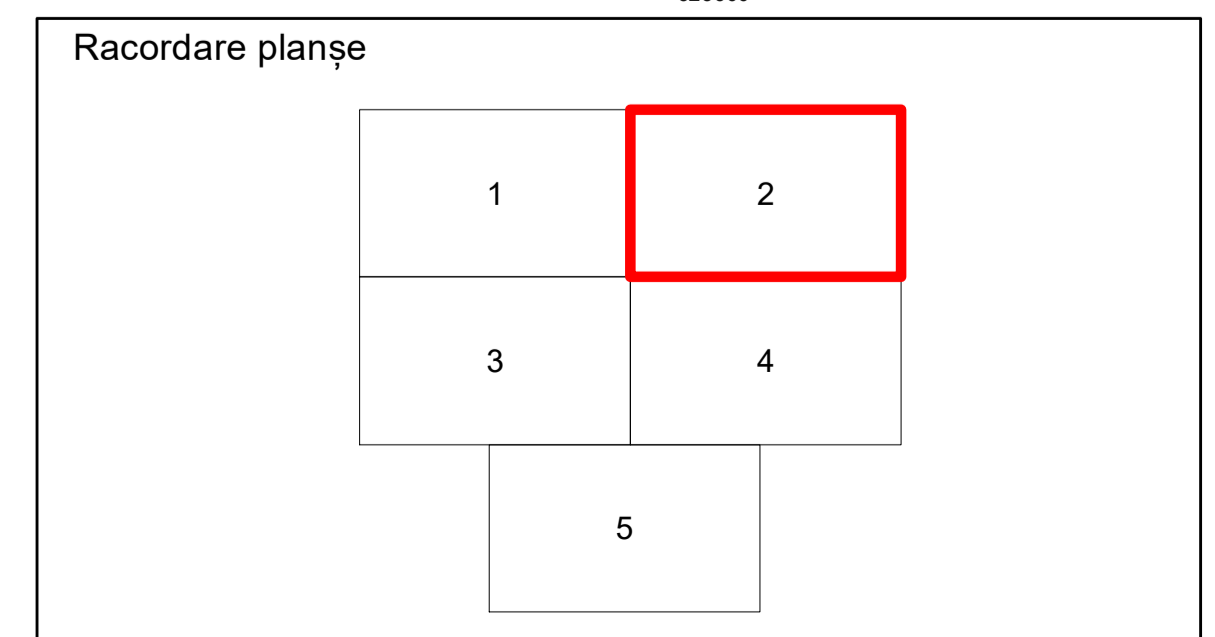
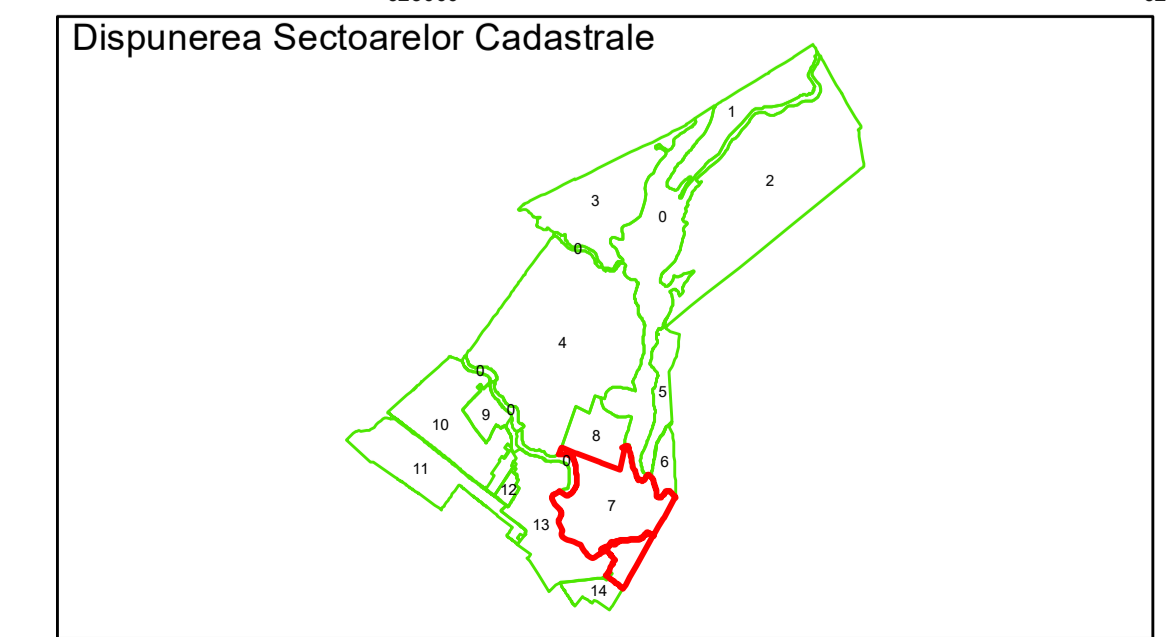
Spre publicare
 Data: ianuarie 2020

PLAN CADASTRAL
 Comuna Jilavele, județul Ialomița, Sector Cadastral 7
 Scara 1:2000, sistem de proiecție STEREO 70



COMUNA
JILAVELE

COMUNA
ARMASESTI

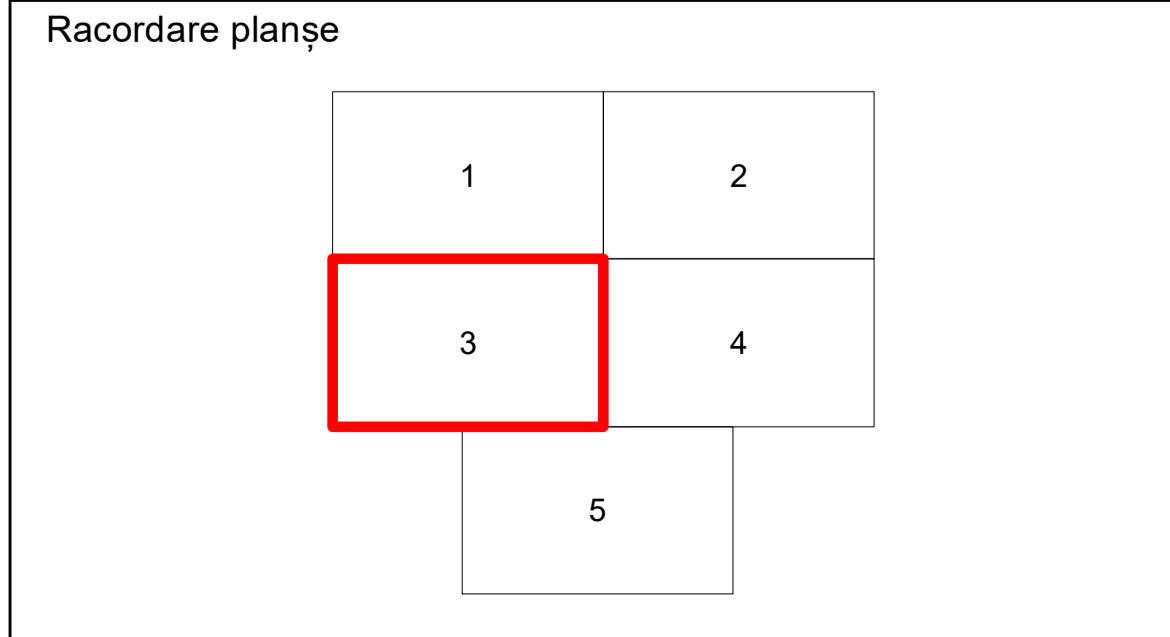
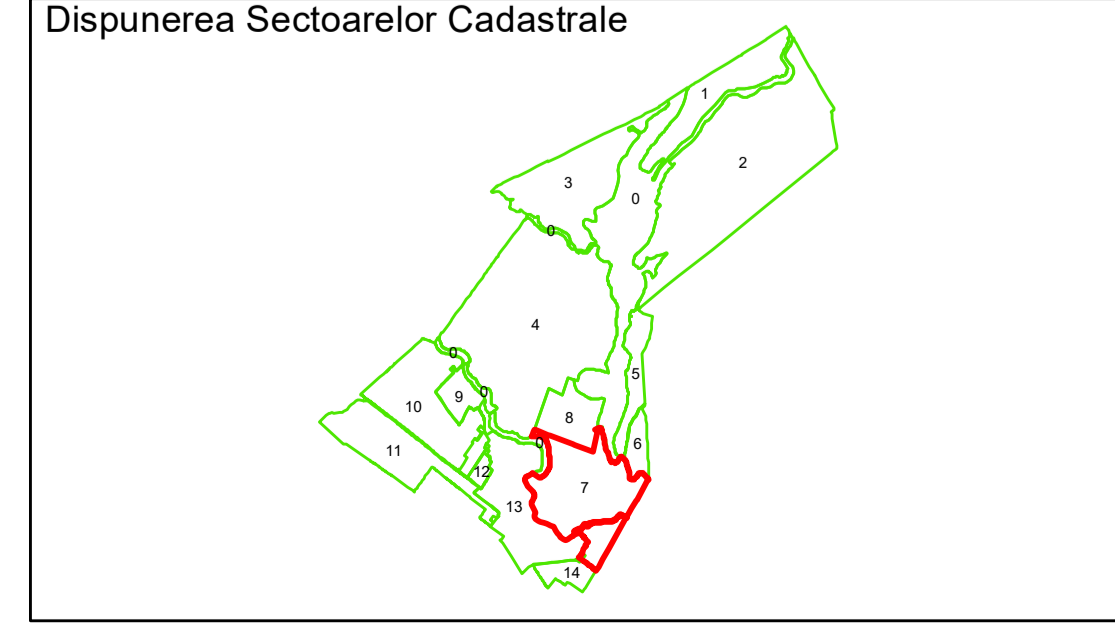


- Legendă**
- Limită UAT
 - Limită Intravilan
 - Sector Cadastral
 - Limită Imobil
 - Construcție
 - 7 Număr Sector Cadastral
 - 458 Identificator Teren

Executant: SC TOPOSOFT CAD SRL

Spre publicare
Data: ianuarie 2020

PLAN CADASTRAL
 Comuna Jilavele, județul Ialomița, Sector Cadastral 7
 Scara 1:2000, sistem de proiecție STEREO 70



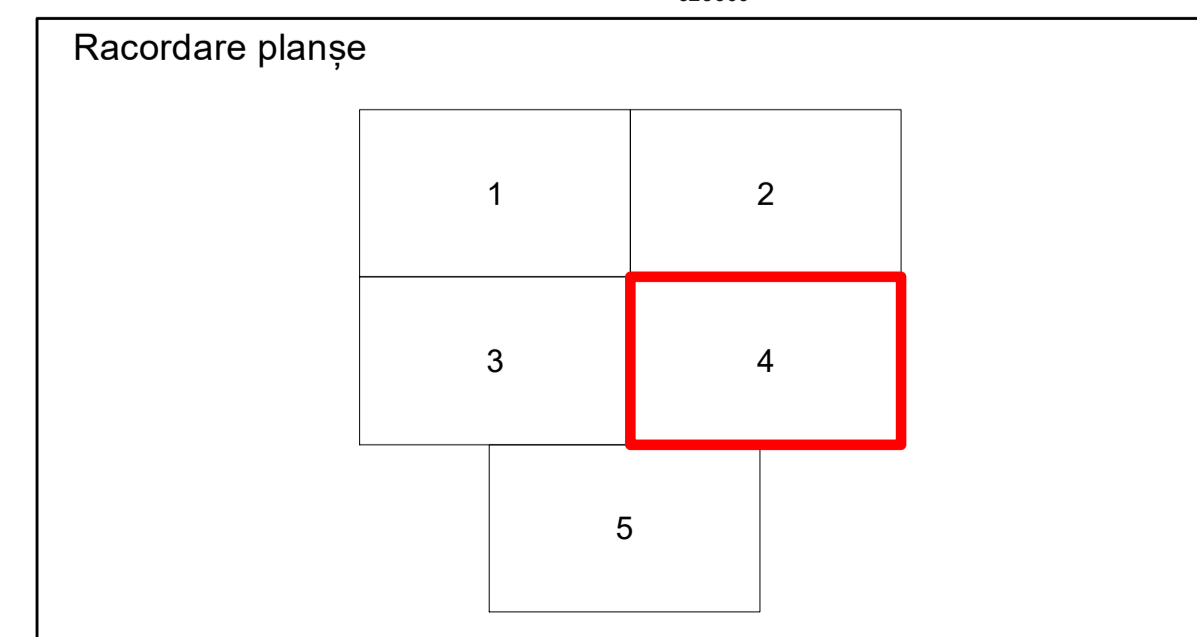
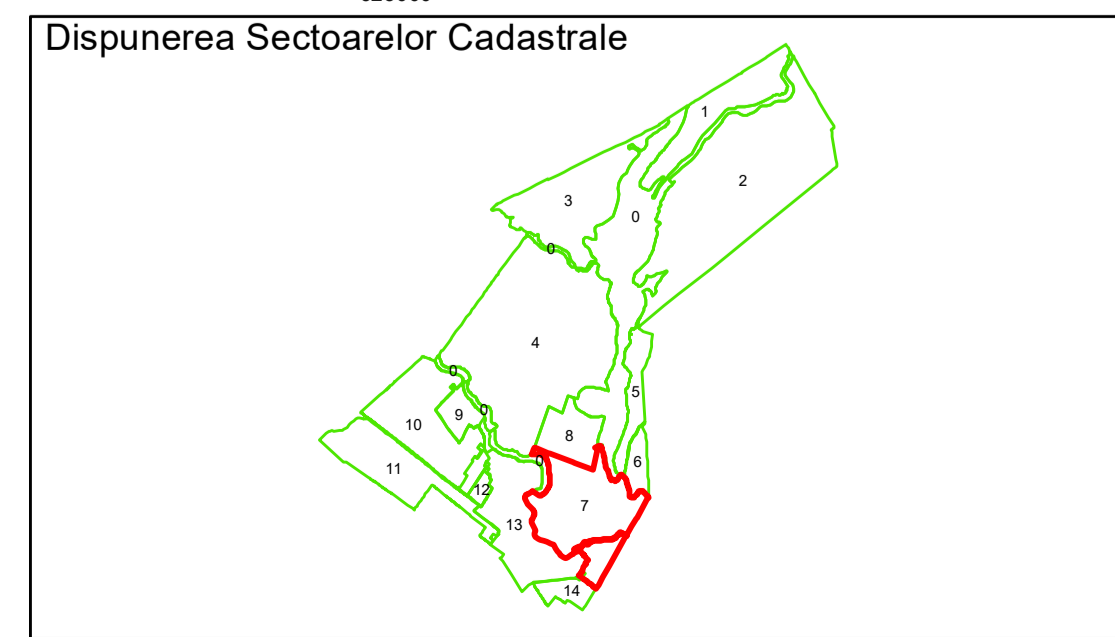
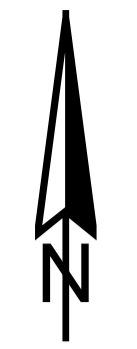
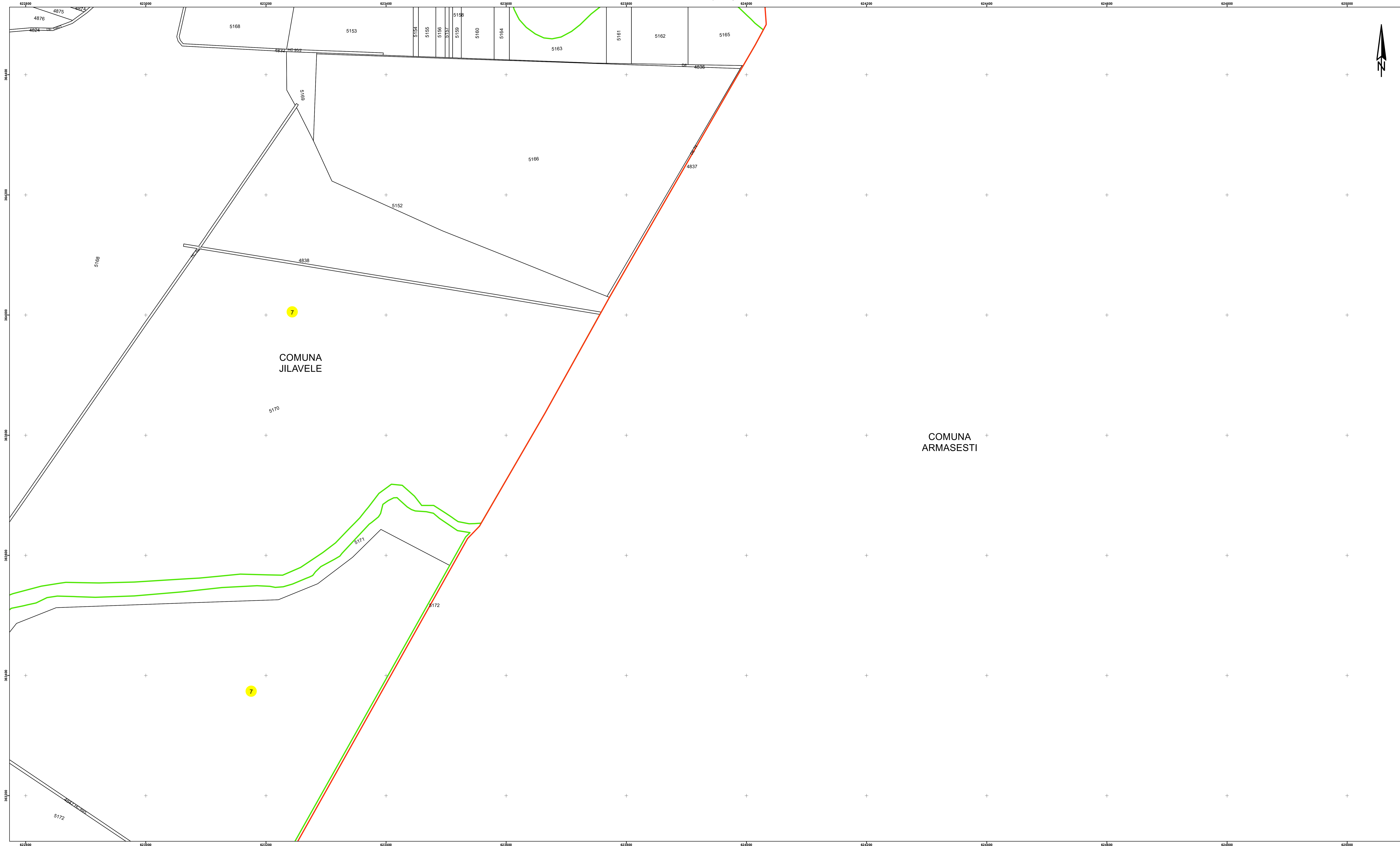
- Legendă**
- Limită UAT
 - Limită Intravilan
 - Sector Cadastral
 - Limită Imobil
 - Construcție
 - 7 Număr Sector Cadastral
 - 458 Identificator Teren

Executant: SC TOPOSOFT CAD SRL



Spre publicare
 Data: ianuarie 2020

PLAN CADASTRAL
 Comuna Jilavele, județul Ialomița, Sector Cadastral 7
 Scara 1:2000, sistem de proiecție STEREO 70

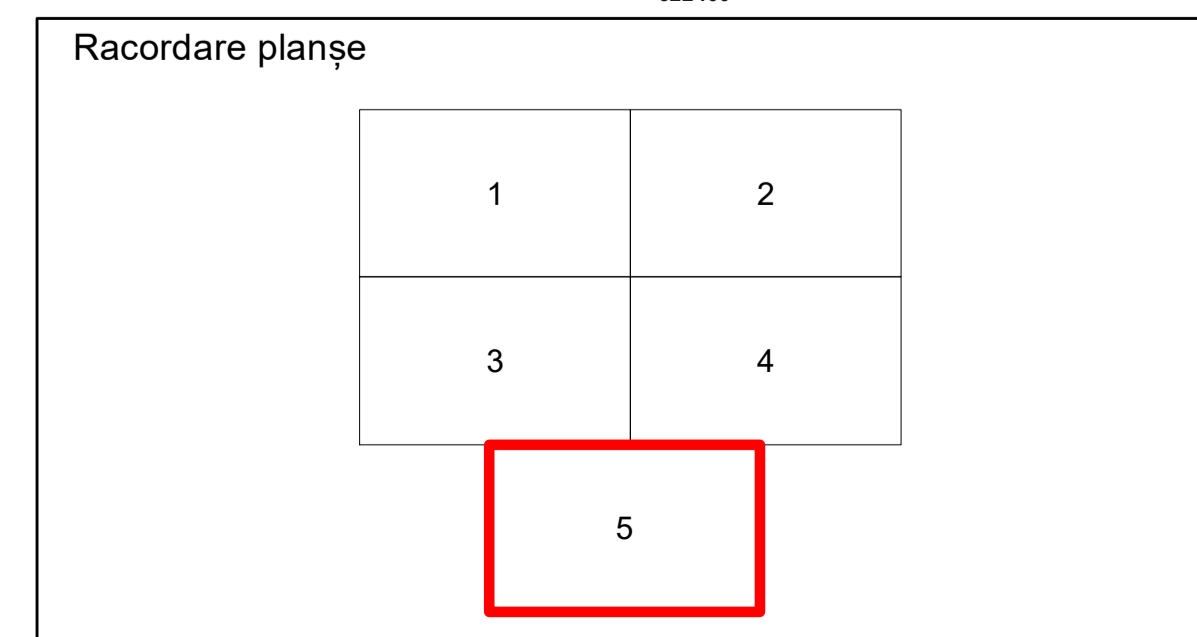
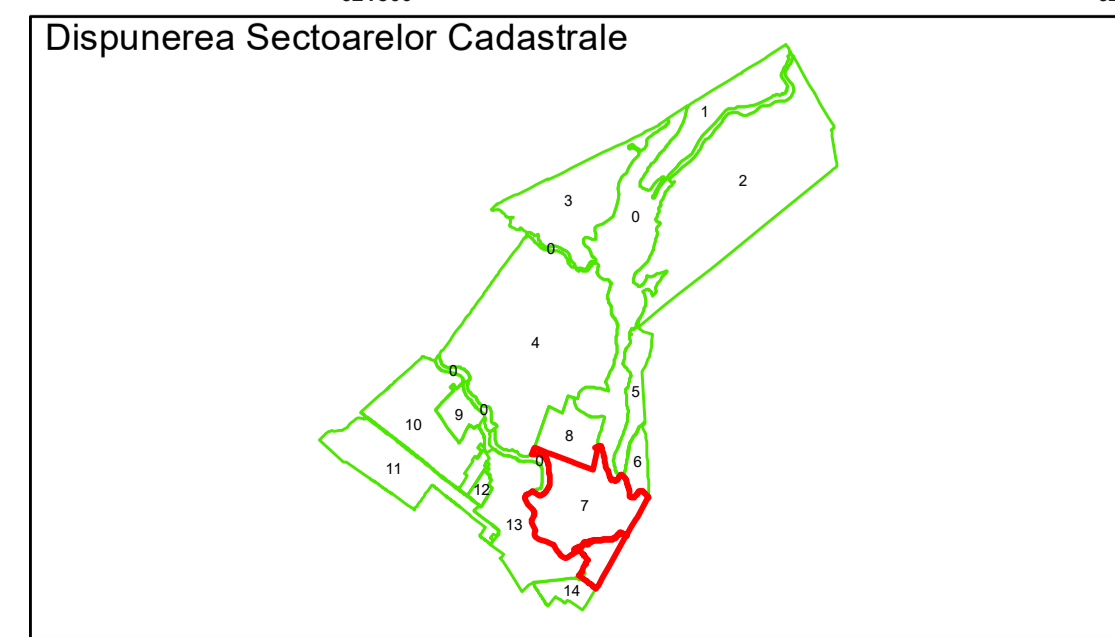
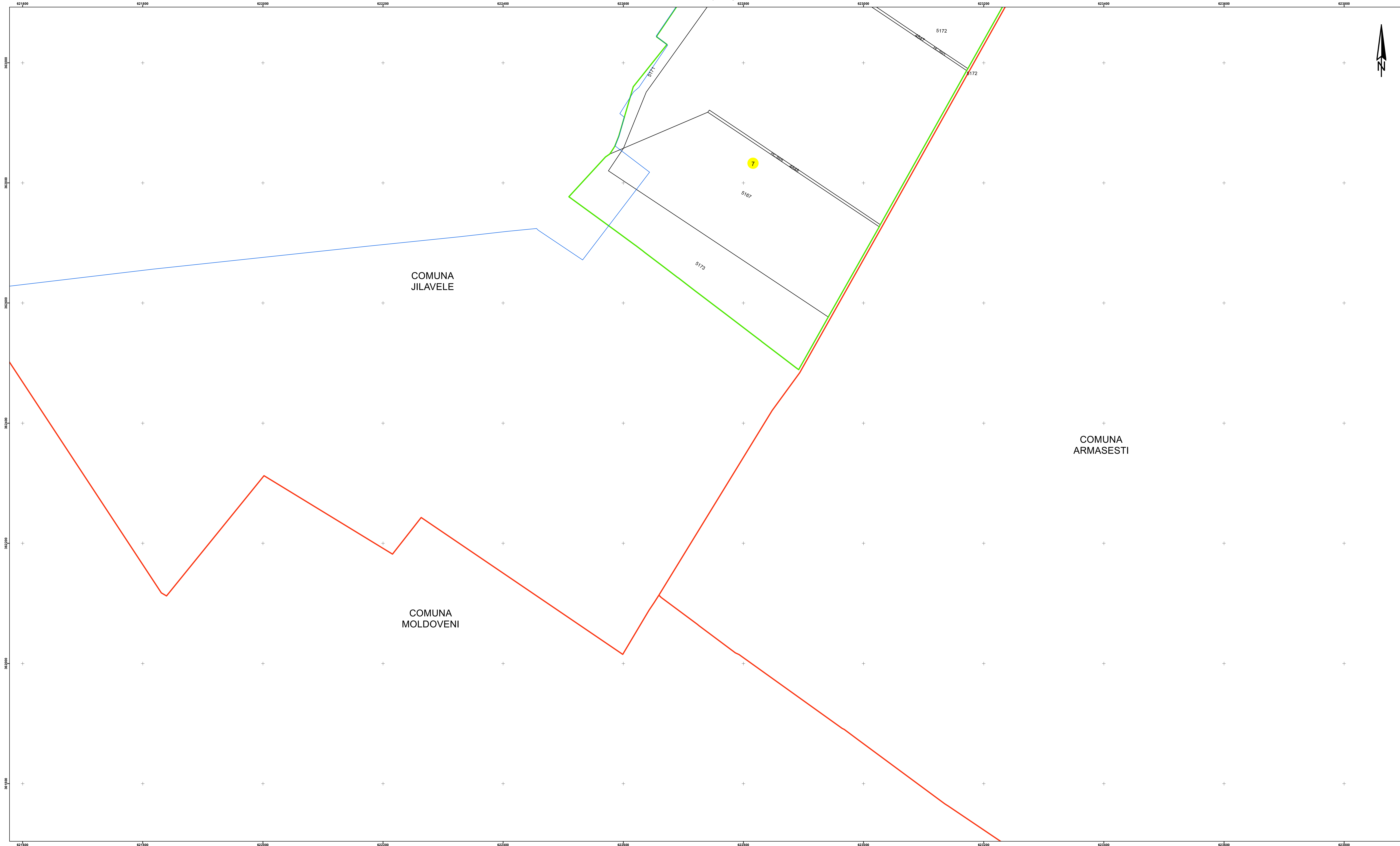


- Legendă**
- Limită UAT
 - Limită Intravilan
 - Sector Cadastral
 - Limită Imobil
 - Construcție
 - 7 Număr Sector Cadastral
 - 458 Identificator Teren

Executant: SC TOPOSOFT CAD SRL

Spre publicare
 Data: ianuarie 2020

PLAN CADASTRAL
 Comuna Jilavele, județul Ialomița, Sector Cadastral 7
 Scara 1:2000, sistem de proiecție STEREO 70



Legendă

- Limită UAT
- Limită Intravilan
- Sector Cadastral
- Limită Imobil
- Construcție
- 7 Număr Sector Cadastral
- 458 Identificator Teren

Executant: SC TOPOSOFT CAD SRL

Spre publicare
 Data: ianuarie 2020