

**DATE DESPRE IMOBILUL NR. 6201**

Oficiul de Cadastru și Publicitate Imobiliară DOLJ
Biroul de Cadastru și Publicitate Imobiliară Craiova

A. Partea I. Descrierea imobilului

TEREN Extravilan

Adresa: Jud. Dolj, DE 1499

| Nr. Crt | Nr cadastral Nr. topografic | Suprafața* (mp) | Observații / Referințe |
|---------|-----------------------------|-----------------|--|
| A1 | | 3.617 | Sector cadastral:14 Teren neimprejmuit; DE 1499 |

B. Partea II. Proprietari și acte

| Inscrieri privitoare la dreptul de proprietate și alte drepturi reale | | Referințe |
|---|--|-----------|
| 0 / 05/04/2023 | | |
| Act Normativ nr. LEGE:7, din 13/03/1996 emis de PARLAMENTUL ROMANIEI; | | |
| B1 | Inscrierea provizorie, drept de PROPRIETATE, dobandit prin Lege, cota actuala 1/1, cota initiala 1/1 1) NEIDENTIFICAT NEIDENTIFICAT | A1 |

C. Partea III. SARCINI .

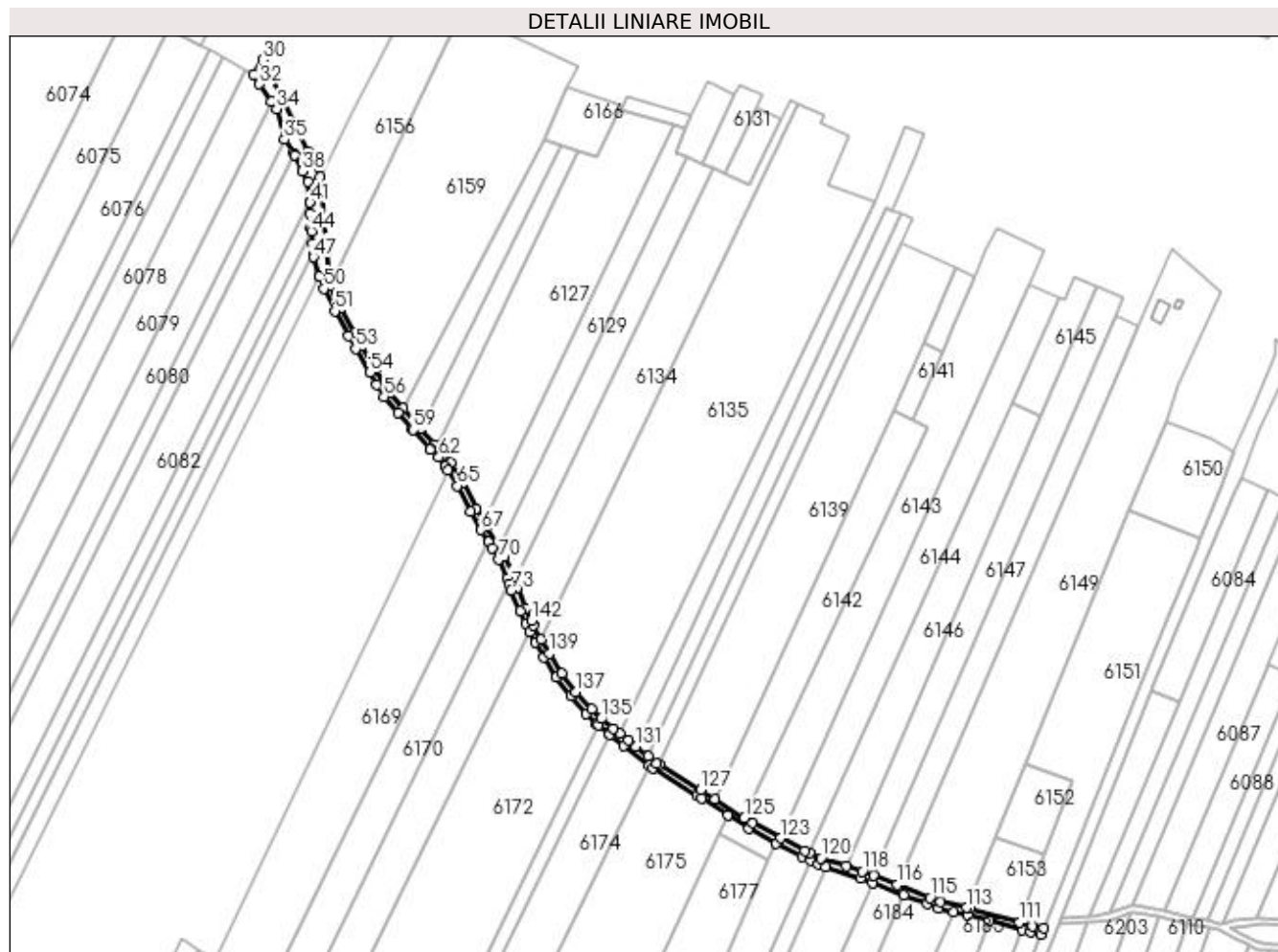
| Inscrieri privind dezmembramintele dreptului de proprietate, drepturi reale de garanție și sarcini | Referințe |
|--|-----------|
| NU SUNT | |

Anexa Nr. 1 La Partea I

Teren

| | | |
|--------------|-----------------|------------------------|
| Nr cadastral | Suprafața (mp)* | Observații / Referințe |
| | 3.617 | DE 1499 |

* Suprafața este determinată în planul de proiecție Stereo 70.



Date referitoare la teren

| Crt | Categorie folosință | Intravilan | Suprafața (mp) | Tarla | Parcelă | Nr. topo | Observații / Referințe |
|-----|---------------------|------------|----------------|-------|---------|----------|------------------------|
| 1 | drum | NU | 3.617 | | 1499 | - | |

Lungime Segmente

1) Valorile lungimilor segmentelor sunt obținute din proiecție în plan.

| Punct început | X / Y | Punct sfârșit | X / Y | Lungime segment | Punct început | X / Y | Punct sfârșit | X / Y | Lungime segment | Punct început | X / Y | Punct sfârșit | X / Y | Lungime segment |
|---------------|----------------------------|---------------|----------------------------|-----------------|---------------|----------------------------|---------------|----------------------------|-----------------|---------------|----------------------------|---------------|----------------------------|-----------------|
| 1 | 373.004,284 309.903,137 | 2 | 372.998,683 309.915,774 | 13.823 | 2 | 372.998,683 309.915,774 | 3 | 372.997,339 309.919,612 | 4.067 | 3 | 372.997,339 309.919,612 | 4 | 372.996,239 309.922,755 | 3.33 |
| 4 | 372.996,239 309.922,755 | 5 | 372.990,762 309.935,014 | 13.427 | 5 | 372.990,762 309.935,014 | 6 | 372.987,961 309.940,137 | 5.839 | 6 | 372.987,961 309.940,137 | 7 | 372.986,948 309.941,991 | 2.113 |
| 7 | 372.986,948 309.941,991 | 8 | 372.979,862 309.953,298 | 13.344 | 8 | 372.979,862 309.953,298 | 9 | 372.978,099 309.956,255 | 3.443 | 9 | 372.978,099 309.956,255 | 10 | 372.973,43 309.964,085 | 9.116 |
| 10 | 372.973,43 309.964,085 | 11 | 372.965,446 309.980,175 | 17.962 | 11 | 372.965,446 309.980,175 | 12 | 372.957,994 309.992,577 | 14.469 | 12 | 372.957,994 309.992,577 | 13 | 372.953,469 309.998,41 | 7.382 |
| 13 | 372.953,469 309.998,41 | 14 | 372.949,603 310.001,949 | 5.241 | 14 | 372.949,603 310.001,949 | 15 | 372.947,813 310.003,587 | 2.426 | 15 | 372.947,813 310.003,587 | 16 | 372.939,392 310.013,441 | 12.962 |

| Punct început | X / Y | Punct sfârșit | X / Y | Lungime segment | Punct început | X / Y | Punct sfârșit | X / Y | Lungime segment | Punct început | X / Y | Punct sfârșit | X / Y | Lungime segment |
|---------------|----------------------------|---------------|----------------------------|-----------------|---------------|----------------------------|---------------|----------------------------|-----------------|---------------|----------------------------|---------------|----------------------------|-----------------|
| 16 | 372.939,392 310.013,441 | 17 | 372.937,263 310.015,933 | 3.278 | 17 | 372.937,263 310.015,933 | 18 | 372.928,425 310.025,715 | 13.183 | 18 | 372.928,425 310.025,715 | 19 | 372.920,171 310.035,233 | 12.598 |
| 19 | 372.920,171 310.035,233 | 20 | 372.911,595 310.049,829 | 16.929 | 20 | 372.911,595 310.049,829 | 21 | 372.902,902 310.064,053 | 16.67 | 21 | 372.902,902 310.064,053 | 22 | 372.898,842 310.071,929 | 8.861 |
| 22 | 372.898,842 310.071,929 | 23 | 372.890,327 310.087,224 | 17.505 | 23 | 372.890,327 310.087,224 | 24 | 372.883,82 310.100,546 | 14.826 | 24 | 372.883,82 310.100,546 | 25 | 372.883,772 310.100,644 | 0.109 |
| 25 | 372.883,772 310.100,644 | 26 | 372.881,913 310.126,273 | 25.696 | 26 | 372.881,913 310.126,273 | 27 | 372.877,765 310.167,912 | 41.845 | 27 | 372.877,765 310.167,912 | 28 | 372.870,235 310.183,235 | 17.073 |
| 28 | 372.870,235 310.183,235 | 29 | 372.862,731 310.198,504 | 17.013 | 29 | 372.862,731 310.198,504 | 30 | 372.842,561 310.239,544 | 45.729 | 30 | 372.842,561 310.239,544 | 31 | 372.837,098 310.230,77 | 10.336 |
| 31 | 372.837,098 310.230,77 | 32 | 372.840,553 310.224,473 | 7.183 | 32 | 372.840,553 310.224,473 | 33 | 372.847,732 310.214,031 | 12.672 | 33 | 372.847,732 310.214,031 | 34 | 372.851,086 310.209,314 | 5.788 |
| 34 | 372.851,086 310.209,314 | 35 | 372.855,889 310.190,501 | 19.416 | 35 | 372.855,889 310.190,501 | 36 | 372.861,404 310.182,078 | 10.068 | 36 | 372.861,404 310.182,078 | 37 | 372.861,989 310.181,183 | 1.069 |
| 37 | 372.861,989 310.181,183 | 38 | 372.867,03 310.171,092 | 11.28 | 38 | 372.867,03 310.171,092 | 39 | 372.870,291 310.164,621 | 7.246 | 39 | 372.870,291 310.164,621 | 40 | 372.871,532 310.152,23 | 12.453 |
| 40 | 372.871,532 310.152,23 | 41 | 372.871,559 310.151,967 | 0.264 | 41 | 372.871,559 310.151,967 | 42 | 372.871,677 310.145,247 | 6.721 | 42 | 372.871,677 310.145,247 | 43 | 372.872,28 310.136,326 | 8.941 |
| 43 | 372.872,28 310.136,326 | 44 | 372.872,421 310.134,427 | 1.904 | 44 | 372.872,421 310.134,427 | 45 | 372.872,997 310.126,713 | 7.735 | 45 | 372.872,997 310.126,713 | 46 | 372.873,495 310.120,738 | 5.996 |
| 46 | 372.873,495 310.120,738 | 47 | 372.873,688 310.118,421 | 2.325 | 47 | 372.873,688 310.118,421 | 48 | 372.877,061 310.107,225 | 11.693 | 48 | 372.877,061 310.107,225 | 49 | 372.877,251 310.106,714 | 0.545 |
| 49 | 372.877,251 310.106,714 | 50 | 372.880,091 310.099,066 | 8.158 | 50 | 372.880,091 310.099,066 | 51 | 372.886,78 310.085,372 | 15.24 | 51 | 372.886,78 310.085,372 | 52 | 372.895,316 310.070,04 | 17.548 |
| 52 | 372.895,316 310.070,04 | 53 | 372.899,413 310.062,091 | 8.943 | 53 | 372.899,413 310.062,091 | 54 | 372.908,164 310.047,773 | 16.78 | 54 | 372.908,164 310.047,773 | 55 | 372.912,509 310.040,377 | 8.578 |
| 55 | 372.912,509 310.040,377 | 56 | 372.916,909 310.032,89 | 8.684 | 56 | 372.916,909 310.032,89 | 57 | 372.925,396 310.023,101 | 12.956 | 57 | 372.925,396 310.023,101 | 58 | 372.934,258 310.013,292 | 13.219 |
| 58 | 372.934,258 310.013,292 | 59 | 372.934,894 310.012,548 | 0.979 | 59 | 372.934,894 310.012,548 | 60 | 372.944,931 310.000,802 | 15.45 | 60 | 372.944,931 310.000,802 | 61 | 372.945,341 310.000,427 | 0.556 |
| 61 | 372.945,341 310.000,427 | 62 | 372.950,518 309.995,689 | 7.018 | 62 | 372.950,518 309.995,689 | 63 | 372.954,688 309.990,313 | 6.804 | 63 | 372.954,688 309.990,313 | 64 | 372.956,076 309.988,003 | 2.695 |
| 64 | 372.956,076 309.988,003 | 65 | 372.961,934 309.978,253 | 11.374 | 65 | 372.961,934 309.978,253 | 66 | 372.969,915 309.962,169 | 17.955 | 66 | 372.969,915 309.962,169 | 67 | 372.976,449 309.951,212 | 12.757 |
| 67 | 372.976,449 309.951,212 | 68 | 372.981,054 309.943,864 | 8.672 | 68 | 372.981,054 309.943,864 | 69 | 372.983,495 309.939,968 | 4.598 | 69 | 372.983,495 309.939,968 | 70 | 372.987,175 309.933,236 | 7.672 |
| 70 | 372.987,175 309.933,236 | 71 | 372.992,519 309.921,276 | 13.1 | 71 | 372.992,519 309.921,276 | 72 | 372.993,635 309.918,088 | 3.378 | 72 | 372.993,635 309.918,088 | 73 | 372.994,961 310.914,3 | 4.013 |
| 73 | 372.994,961 309.914,3 | 74 | 373.000,601 309.901,573 | 13.921 | 74 | 373.000,601 309.901,573 | 75 | 373.003,737 309.893,858 | 8.328 | 75 | 373.003,737 309.893,858 | 76 | 373.006,275 309.888,861 | 5.605 |
| 76 | 373.006,275 309.888,861 | 77 | 373.009,656 309.882,206 | 7.465 | 77 | 373.009,656 309.882,206 | 78 | 373.014,984 309.873,248 | 10.423 | 78 | 373.014,984 309.873,248 | 79 | 373.022,672 309.860,905 | 14.541 |
| 79 | 373.022,672 309.860,905 | 80 | 373.031,55 309.849,386 | 14.543 | 80 | 373.031,55 309.849,386 | 81 | 373.041,167 309.838,503 | 14.523 | 81 | 373.041,167 309.838,503 | 82 | 373.047,463 309.832,394 | 8.773 |
| 82 | 373.047,463 309.832,394 | 83 | 373.048,582 309.831,449 | 1.465 | 83 | 373.048,582 309.831,449 | 84 | 373.054,844 309.826,165 | 8.193 | 84 | 373.054,844 309.826,165 | 85 | 373.055,575 309.825,601 | 0.923 |
| 85 | 373.055,575 309.825,601 | 86 | 373.064,169 309.818,975 | 10.852 | 86 | 373.064,169 309.818,975 | 87 | 373.079,406 309.806,708 | 19.561 | 87 | 373.079,406 309.806,708 | 88 | 373.081,66 309.804,894 | 2.893 |
| 88 | 373.081,66 309.804,894 | 89 | 373.109,16 309.788,344 | 32.096 | 89 | 373.109,16 309.788,344 | 90 | 373.111,756 309.786,686 | 3.08 | 90 | 373.111,756 309.786,686 | 91 | 373.127,877 309.776,388 | 19.129 |
| 91 | 373.127,877 309.776,388 | 92 | 373.140,677 309.768,211 | 15.189 | 92 | 373.140,677 309.768,211 | 93 | 373.157,588 309.759,17 | 19.176 | 93 | 373.157,588 309.759,17 | 94 | 373.173,205 309.750,82 | 17.709 |
| 94 | 373.173,205 309.750,82 | 95 | 373.178,412 309.748,441 | 5.725 | 95 | 373.178,412 309.748,441 | 96 | 373.183,457 309.746,136 | 5.547 | 96 | 373.183,457 309.746,136 | 97 | 373.187,89 309.744,714 | 4.655 |
| 97 | 373.187,89 309.744,714 | 98 | 373.209,324 309.737,839 | 22.51 | 98 | 373.209,324 309.737,839 | 99 | 373.216,685 309.734,942 | 7.911 | 99 | 373.216,685 309.734,942 | 100 | 373.235,854 309.727,474 | 20.572 |
| 100 | 373.235,854 309.727,474 | 101 | 373.250,234 309.721,871 | 15.433 | 101 | 373.250,234 309.721,871 | 102 | 373.256,779 309.719,096 | 7.109 | 102 | 373.256,779 309.719,096 | 103 | 373.266,46 309.717,08 | 9.889 |
| 103 | 373.266,46 309.717,08 | 104 | 373.275,176 309.715,265 | 8.903 | 104 | 373.275,176 309.715,265 | 105 | 373.288,102 309.711,644 | 13.424 | 105 | 373.288,102 309.711,644 | 106 | 373.308,487 309.705,933 | 21.17 |
| 106 | 373.308,487 309.705,933 | 107 | 373.313,675 309.704,479 | 5.388 | 107 | 373.313,675 309.704,479 | 108 | 373.319,833 309.703,214 | 6.287 | 108 | 373.319,833 309.703,214 | 109 | 373.321,327 309.706,99 | 4.061 |
| 109 | 373.321,327 309.706,99 | 110 | 373.314,619 309.708,369 | 6.848 | 110 | 373.314,619 309.708,369 | 111 | 373.306,757 309.710,572 | 8.165 | 111 | 373.306,757 309.710,572 | 112 | 373.276,124 309.719,153 | 31.812 |
| 112 | 373.276,124 309.719,153 | 113 | 373.274,196 309.719,555 | 1.969 | 113 | 373.274,196 309.719,555 | 114 | 373.257,979 309.722,932 | 16.565 | 114 | 373.257,979 309.722,932 | 115 | 373.251,741 309.725,577 | 6.776 |

| Punct început | X / Y | Punct sfârșit | X / Y | Lungime segment | Punct început | X / Y | Punct sfârșit | X / Y | Lungime segment | Punct început | X / Y | Punct sfârșit | X / Y | Lungime segment |
|---------------|----------------------------|---------------|----------------------------|-----------------|---------------|----------------------------|---------------|----------------------------|-----------------|---------------|----------------------------|---------------|----------------------------|-----------------|
| 115 | 373.251,741 309.725,577 | 116 | 373.231,401 309.733,501 | 21.829 | 116 | 373.231,401 309.733,501 | 117 | 373.217,132 309.739,061 | 15.314 | 117 | 373.217,132 309.739,061 | 118 | 373.210,232 309.741,749 | 7.405 |
| 118 | 373.210,232 309.741,749 | 119 | 373.200,321 309.744,928 | 10.408 | 119 | 373.200,321 309.744,928 | 120 | 373.184,904 309.749,873 | 16.191 | 120 | 373.184,904 309.749,873 | 121 | 373.178,038 309.753,01 | 7.549 |
| 121 | 373.178,038 309.753,01 | 122 | 373.174,981 309.754,407 | 3.361 | 122 | 373.174,981 309.754,407 | 123 | 373.160,243 309.762,286 | 16.712 | 123 | 373.160,243 309.762,286 | 124 | 373.142,7 309.771,666 | 19.893 |
| 124 | 373.142,7 309.771,666 | 125 | 373.137,961 309.774,693 | 5.623 | 125 | 373.137,961 309.774,693 | 126 | 373.119,945 309.786,201 | 21.378 | 126 | 373.119,945 309.786,201 | 127 | 373.111,268 309.791,744 | 10.296 |
| 127 | 373.111,268 309.791,744 | 128 | 373.085,661 309.807,154 | 29.886 | 128 | 373.085,661 309.807,154 | 129 | 373.083,956 309.808,181 | 1.99 | 129 | 373.083,956 309.808,181 | 130 | 373.078,853 309.812,289 | 6.551 |
| 130 | 373.078,853 309.812,289 | 131 | 373.071,225 309.818,43 | 9.793 | 131 | 373.071,225 309.818,43 | 132 | 373.066,645 309.822,117 | 5.88 | 132 | 373.066,645 309.822,117 | 133 | 373.061,368 309.826,186 | 6.664 |
| 133 | 373.061,368 309.826,186 | 134 | 373.057,357 309.829,279 | 5.065 | 134 | 373.057,357 309.829,279 | 135 | 373.050,149 309.835,361 | 9.431 | 135 | 373.050,149 309.835,361 | 136 | 373.044,063 309.841,267 | 8.481 |
| 136 | 373.044,063 309.841,267 | 137 | 373.034,547 309.852,035 | 14.37 | 137 | 373.034,547 309.852,035 | 138 | 373.025,963 309.863,188 | 14.074 | 138 | 373.025,963 309.863,188 | 139 | 373.018,401 309.875,328 | 14.303 |
| 139 | 373.018,401 309.875,328 | 140 | 373.013,264 309.883,963 | 10.047 | 140 | 373.013,264 309.883,963 | 141 | 373.008,861 309.892,604 | 9.698 | 141 | 373.008,861 309.892,604 | 142 | 373.007,38 309.895,519 | 3.27 |
| 142 | 373.007,38 309.895,519 | 1 | 373.004,284 309.903,137 | 8.223 | | | | | | | | | | |

** Lungimile segmentelor sunt determinate în planul de proiecție Stereo 70 și sunt rotunjite la 1 milimetru.

*** Distanța dintre puncte este formată din segmente cumulate ce sunt mai mici decât valoarea 1 milimetru.