

**DATE DESPRE IMOBILUL NR. 10738**

Oficiul de Cadastru și Publicitate Imobiliară DOLJ  
Biroul de Cadastru și Publicitate Imobiliară Craiova

**A. Partea I. Descrierea imobilului**

TEREN Extravilan

Adresa: Jud. Dolj, Hc 51/1

Nr. Crt	Nr cadastral Nr. topografic	Suprafața* (mp)	Observații / Referințe
A1		18.573	Sector cadastral:0 Teren neimprejmuit;

**B. Partea II. Proprietari și acte**

Inscrieri privitoare la dreptul de proprietate și alte drepturi reale	Referințe
/	
Act Normativ nr. Legea 7, din 13/03/1996 emis de PARLAMENTUL ROMÂNIEI (ART. 13 ALIN. 15);	
B1	Inscrierea provizorie, drept de PROPRIETATE, dobandit prin Lege, cota actuala 1/1, cota initiala 1/1
	1) NEIDENTIFICAT NEIDENTIFICAT, CIF:0000000000000

**C. Partea III. SARCINI .**

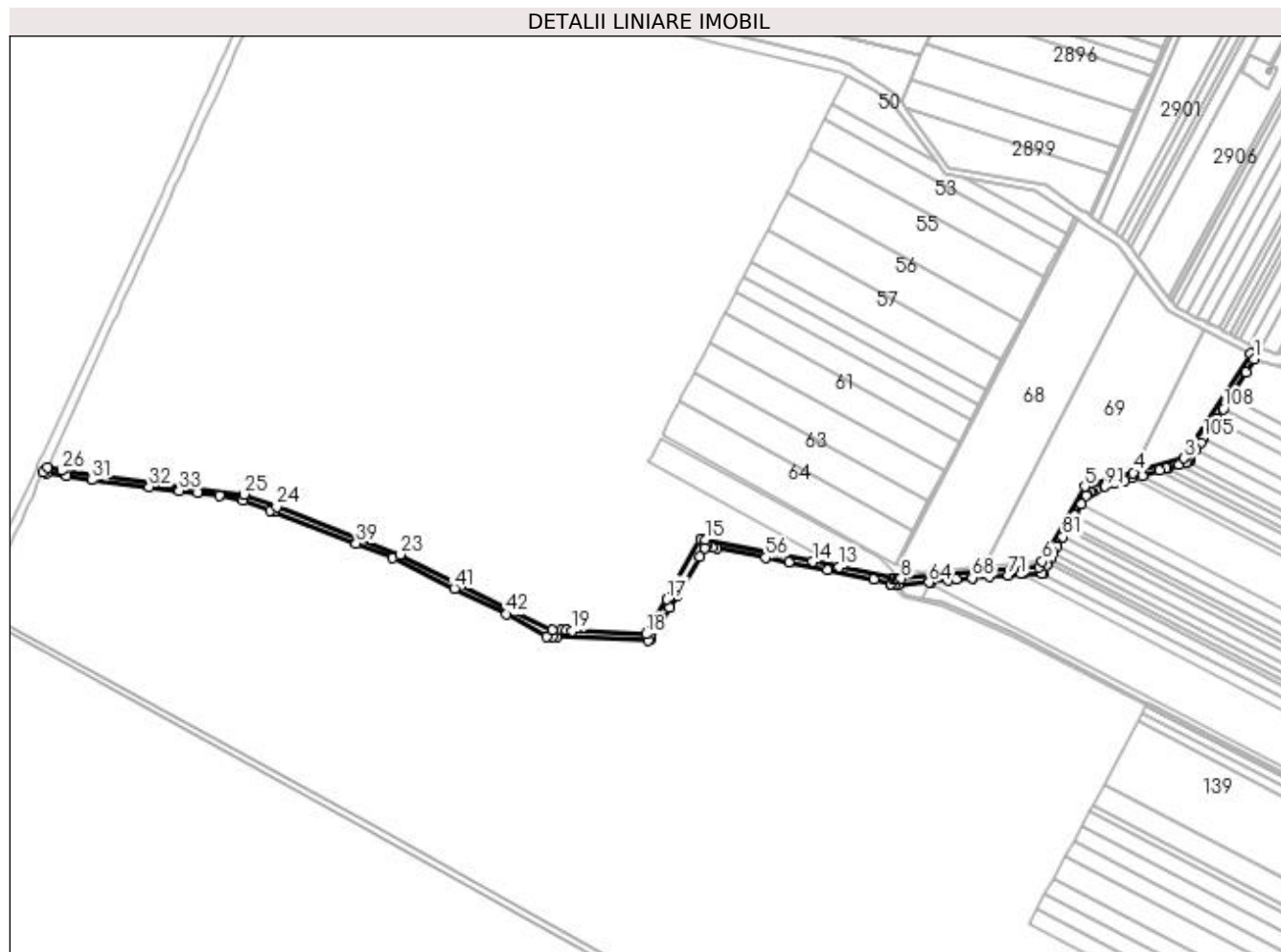
Inscrieri privind dezmembramintele dreptului de proprietate, drepturi reale de garanție și sarcini	Referințe
NU SUNT	

## Anexa Nr. 1 La Partea I

## Teren

Nr cadastral	Suprafața (mp)*	Observații / Referințe
	18.573	

\* Suprafața este determinată în planul de proiecție Stereo 70.



## Date referitoare la teren

Crt	Categorie folosință	Intravilan	Suprafața (mp)	Tarla	Parcelă	Nr. topo	Observații / Referințe
1	ape curgătoare	NU	18.573	Hc 51/1	-	-	

## Lungime Segmente

1) Valorile lungimilor segmentelor sunt obținute din proiecție în plan.

Punct început	X / Y	Punct sfârșit	X / Y	Lungime segment	Punct început	X / Y	Punct sfârșit	X / Y	Lungime segment	Punct început	X / Y	Punct sfârșit	X / Y	Lungime segment
1	429.547,846 298.438,318	2	429.542,658 298.446,473	9.665	2	429.542,658 298.446,473	3	429.442,829 298.289,327	186.174	3	429.442,829 298.289,327	4	429.366,553 298.267,664	79.293
4	429.366,553 298.267,664	5	429.293,31 298.246,863	76.139	5	429.293,31 298.246,863	6	429.229,387 298.134,183	129.549	6	429.229,387 298.134,183	7	429.224,462 298.125,502	9.981
7	429.224,462 298.125,502	8	429.016,866 298.108,26	208.311	8	429.016,866 298.108,26	9	429.012,202 298.107,873	4.68	9	429.012,202 298.107,873	10	429.011,046 298.107,777	1.16
10	429.011,046 298.107,777	11	429.006,308 298.108,876	4.864	11	429.006,308 298.108,876	12	429.004,78 298.109,23	1.568	12	429.004,78 298.109,23	13	428.923,712 298.125,664	82.717
13	428.923,712 298.125,664	14	428.884,18 298.133,678	40.336	14	428.884,18 298.133,678	15	428.722,196 298.166,514	165.279	15	428.722,196 298.166,514	16	428.715,129 298.167,947	7.211

Punct început	X / Y	Punct sfârșit	X / Y	Lungime segment	Punct început	X / Y	Punct sfârșit	X / Y	Lungime segment	Punct început	X / Y	Punct sfârșit	X / Y	Lungime segment
16	428.715,129 298.167,947	17	428.665,191 298.077,009	103.747	17	428.665,191 298.077,009	18	428.633,935 298.025,031	60.652	18	428.633,935 298.025,031	19	428.522,645 298.030,162	111.408
19	428.522,645 298.030,162	20	428.514,231 298.030,549	8.423	20	428.514,231 298.030,549	21	428.506,396 298.030,911	7.843	21	428.506,396 298.030,911	22	428.493,048 298.031,526	13.362
22	428.493,048 298.031,526	23	428.264,075 298.144,811	255.465	23	428.264,075 298.144,811	24	428.077,724 298.216,21	199.561	24	428.077,724 298.216,21	25	428.028,798 298.235,129	52.456
25	428.028,798 298.235,129	26	427.754,208 298.271,047	276.929	26	427.754,208 298.271,047	27	427.734,156 298.276,235	20.712	27	427.734,156 298.276,235	28	427.726,923 298.268,381	10.677
28	427.726,923 298.268,381	29	427.731,769 298.267,603	4.908	29	427.731,769 298.267,603	30	427.762,51 298.262,662	31.136	30	427.762,51 298.262,662	31	427.800,258 298.256,595	38.232
31	427.800,258 298.256,595	32	427.886,458 298.246,014	86.847	32	427.886,458 298.246,014	33	427.931,398 298.240,497	45.277	33	427.931,398 298.240,497	34	427.959,108 298.237,435	27.879
34	427.959,108 298.237,435	35	427.991,637 298.233,84	32.727	35	427.991,637 298.233,84	36	428.027,01 298.226,078	36.215	36	428.027,01 298.226,078	37	428.068,136 298.211,13	43.758
37	428.068,136 298.211,13	38	428.074,003 298.208,874	6.286	38	428.074,003 298.208,874	39	428.197,688 298.161,319	132.512	39	428.197,688 298.161,319	40	428.252,758 298.139,687	59.166
40	428.252,758 298.139,687	41	428.345,074 298.093,405	103.268	41	428.345,074 298.093,405	42	428.423,917 298.054,859	87.761	42	428.423,917 298.054,859	43	428.483,553 298.021,707	68.231
43	428.483,553 298.021,707	44	428.492,756 298.020,845	9.243	44	428.492,756 298.020,845	45	428.499,284 298.020,61	6.532	45	428.499,284 298.020,61	46	428.637,286 298.015,641	138.091
46	428.637,286 298.015,641	47	428.640,737 298.018,228	4.313	47	428.640,737 298.018,228	48	428.641,593 298.019,626	1.639	48	428.641,593 298.019,626	49	428.668,958 298.064,296	52.386
49	428.668,958 298.064,296	50	428.680,712 298.083,483	22.501	50	428.680,712 298.083,483	51	428.714,149 298.141,077	66.597	51	428.714,149 298.141,077	52	428.721,343 298.153,47	14.33
52	428.721,343 298.153,47	53	428.724,219 298.156,344	4.066	53	428.724,219 298.156,344	54	428.733,134 298.155,194	8.989	54	428.733,134 298.155,194	55	428.739,224 298.154,04	6.198
55	428.739,224 298.154,04	56	428.813,387 298.139,983	75.483	56	428.813,387 298.139,983	57	428.848,265 298.133,372	35.499	57	428.848,265 298.133,372	58	428.906,108 298.120,998	59.152
58	428.906,108 298.120,998	59	428.975,84 298.106,881	71.147	59	428.975,84 298.106,881	60	429.001,952 298.100,858	26.798	60	429.001,952 298.100,858	61	429.002,011 298.100,845	0.06
61	429.002,011 298.100,845	62	429.008,537 298.099,793	6.61	62	429.008,537 298.099,793	63	429.012,764 298.099,111	4.282	63	429.012,764 298.099,111	64	429.059,354 298.102,561	46.718
64	429.059,354 298.102,561	65	429.061,891 298.102,832	2.551	65	429.061,891 298.102,832	66	429.087,59 298.105,585	25.846	66	429.087,59 298.105,585	67	429.099,784 298.106,891	12.264
67	429.099,784 298.106,891	68	429.123,774 298.109,46	24.127	68	429.123,774 298.109,46	69	429.124,735 298.109,535	0.964	69	429.124,735 298.109,535	70	429.150,188 298.111,524	25.531
70	429.150,188 298.111,524	71	429.177,976 298.113,696	27.873	71	429.177,976 298.113,696	72	429.197,905 298.115,253	19.99	72	429.197,905 298.115,253	73	429.201,002 298.115,496	3.107
73	429.201,002 298.115,496	74	429.229,473 298.115,496	28.471	74	429.229,473 298.115,496	75	429.229,88 298.116,371	0.965	75	429.229,88 298.116,371	76	429.235,445 298.128,333	13.193
76	429.235,445 298.128,333	77	429.236,891 298.130,862	2.913	77	429.236,891 298.130,862	78	429.241,082 298.138,194	8.445	78	429.241,082 298.138,194	79	429.245,958 298.146,724	9.825
79	429.245,958 298.146,724	80	429.251,955 298.157,213	12.082	80	429.251,955 298.157,213	81	429.259,955 298.171,208	16.12	81	429.259,955 298.171,208	82	429.265,958 298.181,709	12.096
82	429.265,958 298.181,709	83	429.270,466 298.189,595	9.084	83	429.270,466 298.189,595	84	429.278,477 298.203,609	16.142	84	429.278,477 298.203,609	85	429.288,074 298.220,397	19.338
85	429.288,074 298.220,397	86	429.295,03 298.232,565	14.016	86	429.295,03 298.232,565	87	429.296,687 298.234,124	2.275	87	429.296,687 298.234,124	88	429.301,193 298.238,362	6.186
88	429.301,193 298.238,362	89	429.303,354 298.239,263	2.341	89	429.303,354 298.239,263	90	429.309,892 298.241,986	7.082	90	429.309,892 298.241,986	91	429.324,213 298.246,948	15.156
91	429.324,213 298.246,948	92	429.337,079 298.251,406	13.616	92	429.337,079 298.251,406	93	429.352,876 298.255,904	16.425	93	429.352,876 298.255,904	94	429.365,051 298.259,371	12.659
94	429.365,051 298.259,371	95	429.379,372 298.263,448	14.89	95	429.379,372 298.263,448	96	429.405,423 298.270,865	27.086	96	429.405,423 298.270,865	97	429.414,752 298.273,521	9.7
97	429.414,752 298.273,521	98	429.418,492 298.274,589	3.89	98	429.418,492 298.274,589	99	429.435,295 298.279,388	17.475	99	429.435,295 298.279,388	100	429.445,201 298.282,217	10.302
100	429.445,201 298.282,217	101	429.447,636 298.283,948	2.988	101	429.447,636 298.283,948	102	429.452,51 298.287,414	5.981	102	429.452,51 298.287,414	103	429.461,186 298.302,373	17.293
103	429.461,186 298.302,373	104	429.467,01 298.312,416	11.61	104	429.467,01 298.312,416	105	429.471,676 298.319,211	8.243	105	429.471,676 298.319,211	106	429.490,72 298.346,95	33.647
106	429.490,72 298.346,95	107	429.492,384 298.349,374	2.94	107	429.492,384 298.349,374	108	429.501,434 298.363,899	17.114	108	429.501,434 298.363,899	109	429.512,058 298.380,951	20.091
109	429.512,058 298.380,951	110	429.535,593 298.418,725	44.506	110	429.535,593 298.418,725	1	429.547,846 298.438,318	23.109					

**\*\* Lungimile segmentelor sunt determinate în planul de proiecție Stereo 70 și sunt rotunjite la 1 milimetru.**

**\*\*\* Distanța dintre puncte este formată din segmente cumulate ce sunt mai mici decât valoarea 1 milimetru.**