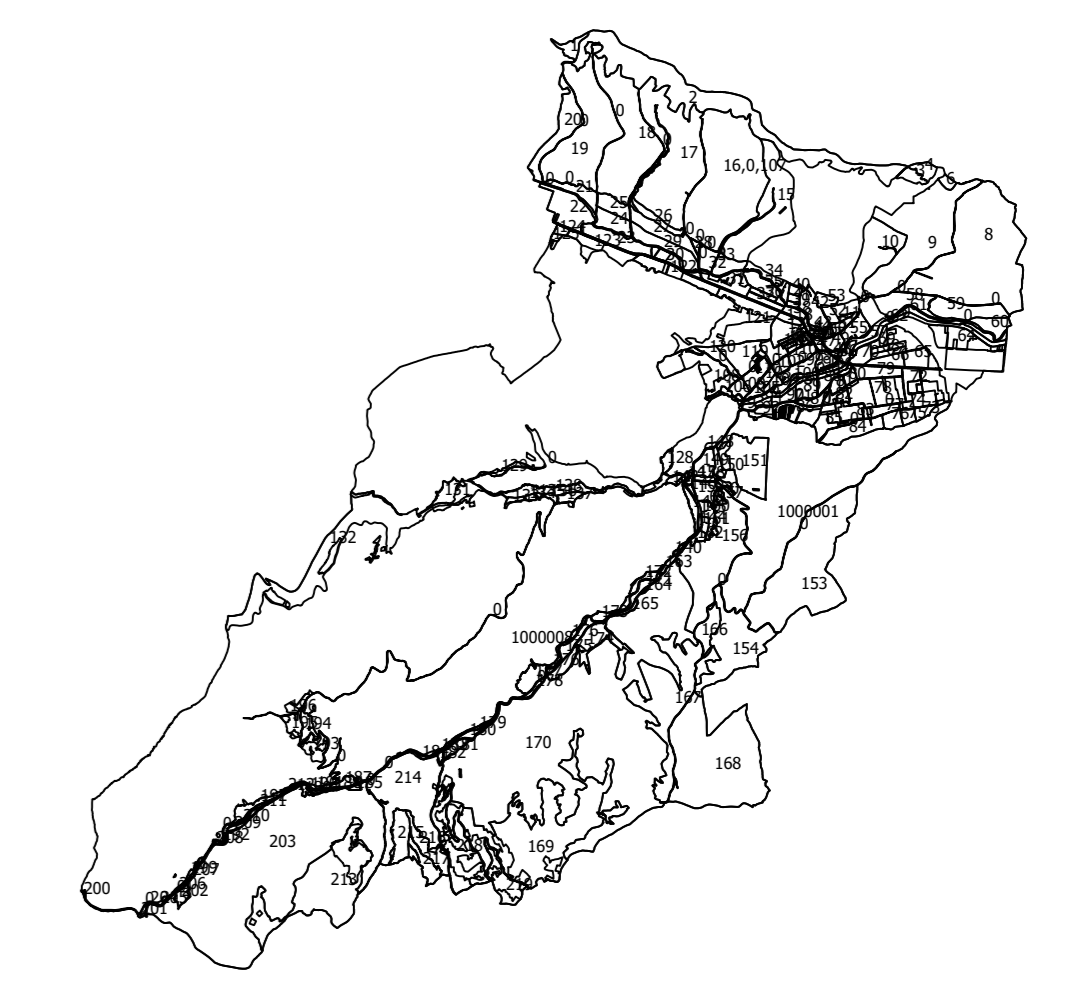


**PLAN CADASTRAL**  
 UAT: GILAU  
 Judet: CLUJ  
 Sectoare cadastrale:  
 0, 145, 203, 214  
 Scara 1:1000  
 Sistem de proiectie STEREO 1970  
 Plansa 261



Schita cu dispunerea sectorului



Schema de dispunere a planselor

|            |            |            |
|------------|------------|------------|
| Plansa 243 | Plansa 244 | Plansa 245 |
| Plansa 260 | Plansa 261 | Plansa 262 |
| Plansa 277 | Plansa 278 | Plansa 279 |

**Legenda:**

|  |                                    |
|--|------------------------------------|
|  | Limita sector cadastral            |
|  | Numar sector cadastral             |
|  | Numar tarla                        |
|  | Limita imobil                      |
|  | Limita constructie                 |
|  | ID imobil                          |
|  | Numar corp constructie             |
|  | Numar postal                       |
|  | Toponimie                          |
|  | Limita UAT si teritorii invecinate |
|  | Limita intravilan                  |

Executant: S.C. GEOMATICS INTEGRATED SERVICES S.R.L.

Data: Iunie 2025

Acest document a fost semnat electronic de catre Paul-Daniel DUMITRU,  
 reprezentant al S.C. GEOMATICS INTEGRATED SERVICES S.R.L

Documente spre publicare

