

**DATE DESPRE IMOBILUL NR. 6588**

Oficiul de Cadastru și Publicitate Imobiliară ALBA
Biroul de Cadastru și Publicitate Imobiliară Aiud

A. Partea I. Descrierea imobilului

TEREN Extravilan

Adresa: Jud. Alba

Nr. Crt	Nr cadastral Nr. topografic	Suprafața* (mp)	Observații / Referințe
A1		3.000	Sector cadastral:7 Teren neimprejmuit;

Construcții

Crt	Nr cadastral Nr. topografic	Adresa	Observații / Referințe
A1.1		Jud. Alba	Nr. niveluri:1; S. construita la sol:108 mp; S. construita desfasurata:108 mp; Casa de locuit
A1.2		Jud. Alba	Nr. niveluri:1; S. construita la sol:101 mp; S. construita desfasurata:101 mp; Anexa

B. Partea II. Proprietari și acte

Inscrieri privitoare la dreptul de proprietate și alte drepturi reale		Referințe
1 / 01/01/2023		
Act Normativ nr. 7, din 13/03/1996 emis de PARLAMENT;		
B1	Inscrierea provizorie, drept de PROPRIETATE, dobandit prin Lege, cota actuala 1/1 1) UAT MIRASLĂU, CIF:9999999999999	A1, A1.1, A1.2

C. Partea III. SARCINI .

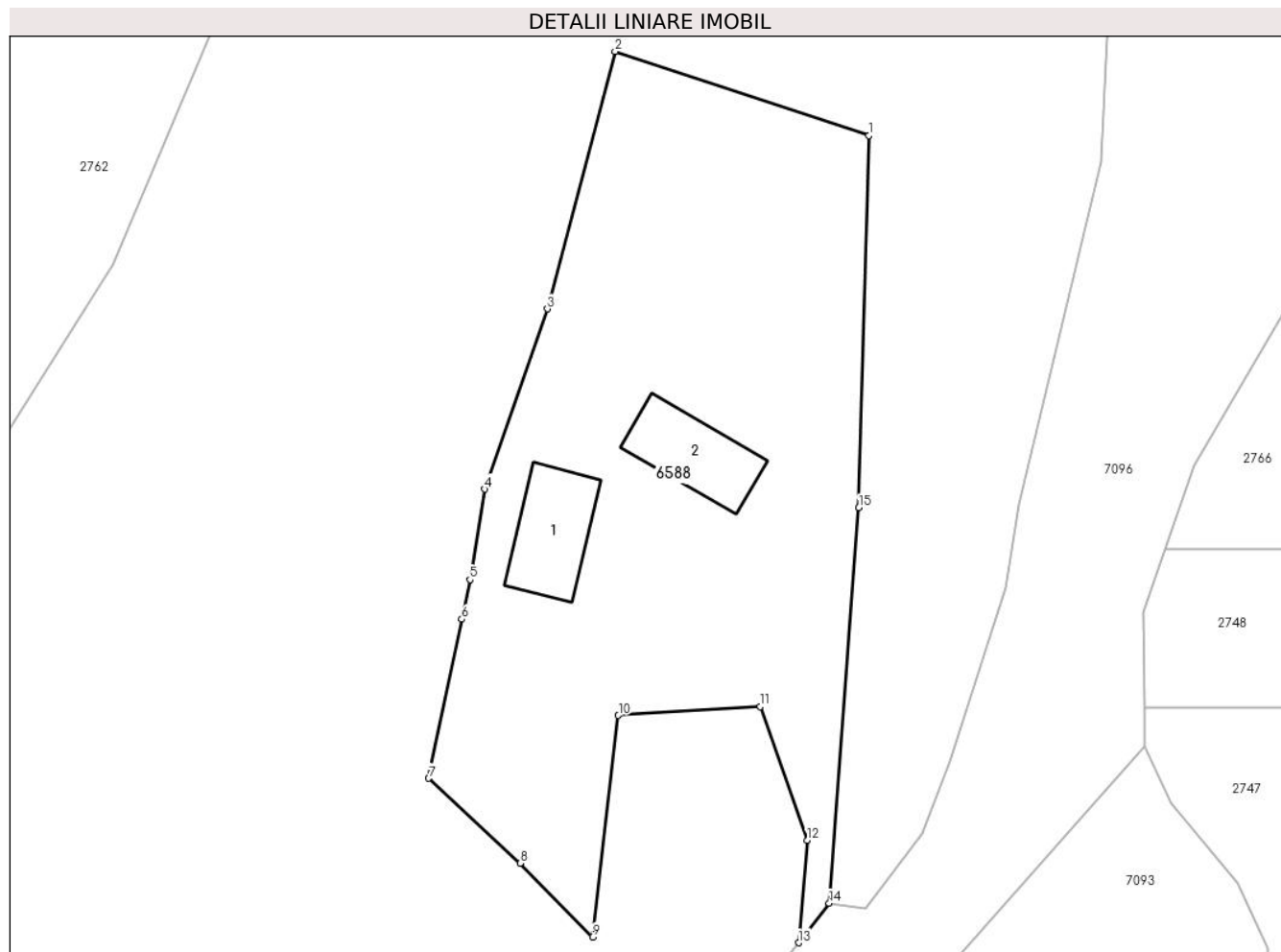
Inscrieri privind dezmembramintele dreptului de proprietate, drepturi reale de garanție și sarcini	Referințe
NU SUNT	

Anexa Nr. 1 La Partea I

Teren

Nr cadastral	Suprafața (mp)*	Observații / Referințe
	3.000	

* Suprafața este determinată în planul de proiecție Stereo 70.



Date referitoare la teren

Crt	Categorie folosință	Intravilan	Suprafața (mp)	Tarla	Parcelă	Nr. topo	Observații / Referințe
1	curți constructii	NU	1.035	-	-	-	
2	arabil	NU	1.965	-	-	-	

Date referitoare la construcții

Crt	Număr	Destinație construcție	Supraf. (mp)	Situație juridică	Observații / Referințe
A1.1		construcții de locuințe	108	Cu acte	Nr. niveluri:1; S. construita la sol:108 mp; S. construita desfasurata:108 mp; Casa de locuit
A1.2		construcții anexa	101	Cu acte	Nr. niveluri:1; S. construita la sol:101 mp; S. construita desfasurata:101 mp; Anexa

Lungime Segmente

1) Valorile lungimilor segmentelor sunt obținute din proiecție în plan.

Punct început	X / Y	Punct sfârșit	X / Y	Lungime segment (** (m)
1	394.362,496 545.403,152	2	394.334,517 545.412,437	29.479
2	394.334,517 545.412,437	3	394.327,039 545.384,048	29.357

Punct început	X / Y	Punct sfârșit	X / Y	Lungime segment (** (m)
3	394.327,039 545.384,048	4	394.320,139 545.364,175	21.037
4	394.320,139 545.364,175	5	394.318,482 545.354,194	10.118
5	394.318,482 545.354,194	6	394.317,578 545.349,846	4.441
6	394.317,578 545.349,846	7	394.313,931 545.332,308	17.913
7	394.313,931 545.332,308	8	394.324,024 545.322,944	13.768
8	394.324,024 545.322,944	9	394.332,016 545.314,794	11.415
9	394.332,016 545.314,794	10	394.334,873 545.339,229	24.601
10	394.334,873 545.339,229	11	394.350,54 545.340,202	15.697
11	394.350,54 545.340,202	12	394.355,704 545.325,471	15.61
12	394.355,704 545.325,471	13	394.354,758 545.314,166	11.345
13	394.354,758 545.314,166	14	394.358,134 545.318,537	5.523
14	394.358,134 545.318,537	15	394.361,411 545.362,124	43.71
15	394.361,411 545.362,124	1	394.362,496 545.403,152	41.042

** Lungimile segmentelor sunt determinate în planul de proiecție Stereo 70 și sunt rotunjite la 1 milimetru.

*** Distanța dintre puncte este formată din segmente cumulate ce sunt mai mici decât valoarea 1 milimetru.

**DATE DESPRE IMOBILUL NR. 7091**

Oficiul de Cadastru și Publicitate Imobiliară ALBA
Biroul de Cadastru și Publicitate Imobiliară Aiud

A. Partea I. Descrierea imobilului

TEREN Extravilan

Adresa: Jud. Alba

Nr. Crt	Nr cadastral Nr. topografic	Suprafața* (mp)	Observații / Referințe
A1		170.557	Sector cadastral:7 Teren neimprejmuit;

B. Partea II. Proprietari și acte

Inscrieri privitoare la dreptul de proprietate și alte drepturi reale		Referințe
1 / 01/01/2023		
Act Normativ nr. 7, din 13/03/1996 emis de PARLAMENT;		
B1	Inscrierea provizorie, drept de PROPRIETATE, dobandit prin Lege, cota actuala 1/1 1) UAT MIRASLĂU, CIF:9999999999999	A1

C. Partea III. SARCINI .

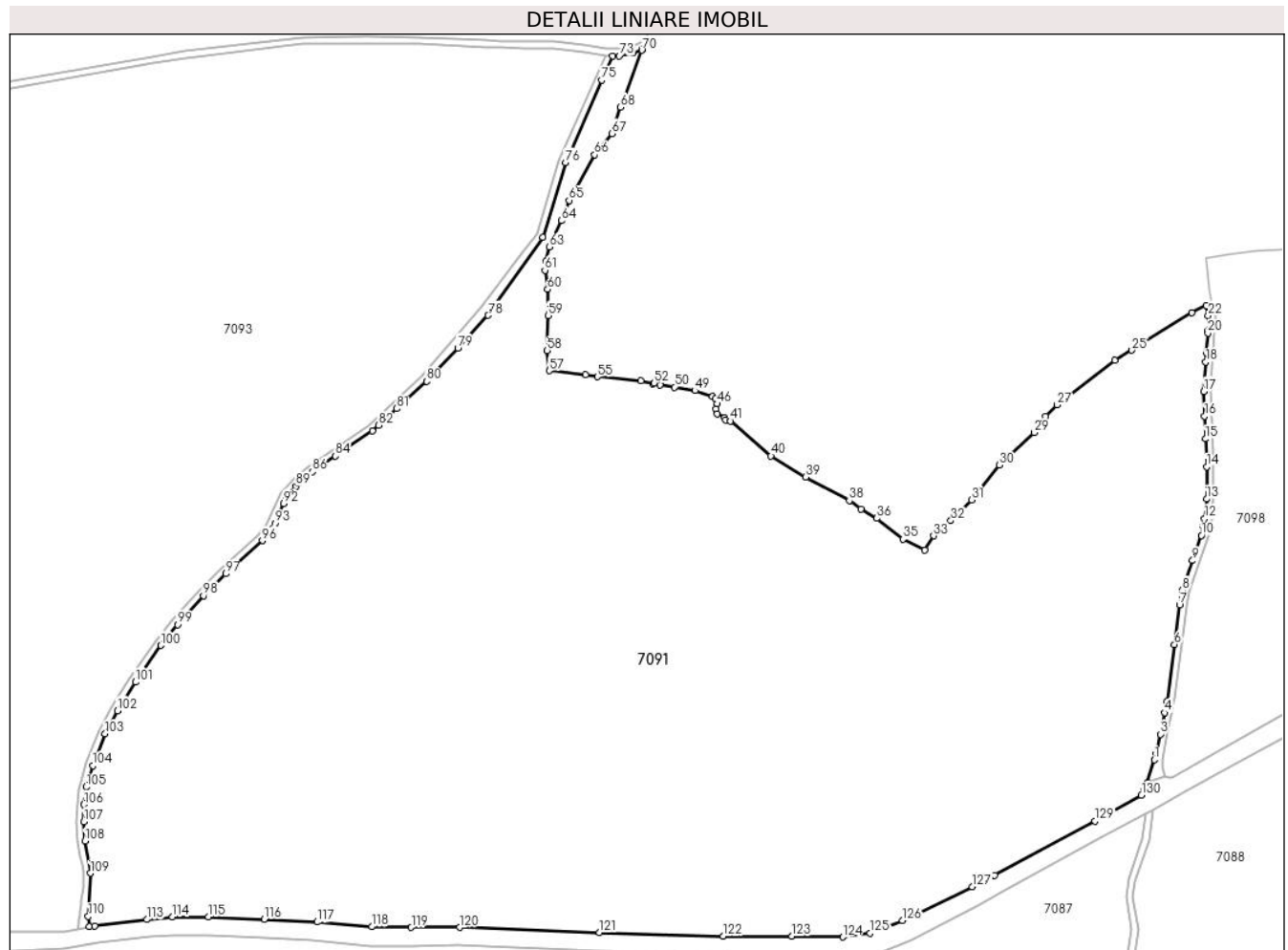
Inscrieri privind dezmembramintele dreptului de proprietate, drepturi reale de garanție și sarcini	Referințe
NU SUNT	

Anexa Nr. 1 La Partea I

Teren

Nr cadastral	Suprafața (mp)*	Observații / Referințe
	170.557	

* Suprafața este determinată în planul de proiecție Stereo 70.



Date referitoare la teren

Crt	Categorie folosință	Intravilan	Suprafața (mp)	Tarla	Parcelă	Nr. topo	Observații / Referințe
1	faneata	NU	158.420	-	-	-	
2	arabil	NU	12.137	-	-	-	

Lungime Segmente

1) Valorile lungimilor segmentelor sunt obținute din proiecție în plan.

Punct început	X / Y	Punct sfârșit	X / Y	Lungime segment	Punct început	X / Y	Punct sfârșit	X / Y	Lungime segment	Punct început	X / Y	Punct sfârșit	X / Y	Lungime segment
1	396.023,114 545.146,685	2	396.024,234 545.150,199	3.688	2	396.024,234 545.150,199	3	396.026,554 545.161,548	11.584	3	396.026,554 545.161,548	4	396.029,101 545.174,009	12.719
4	396.029,101 545.174,009	5	396.030,486 545.180,785	6.916	5	396.030,486 545.180,785	6	396.034,753 545.213,592	33.083	6	396.034,753 545.213,592	7	396.037,754 545.236,67	23.272
7	396.037,754 545.236,67	8	396.039,433 545.245,154	8.649	8	396.039,433 545.245,154	9	396.045,35 545.262,437	18.268	9	396.045,35 545.262,437	10	396.050,518 545.277,036	15.487
10	396.050,518 545.277,036	11	396.051,51 545.282,39	5.445	11	396.051,51 545.282,39	12	396.052,342 545.286,877	4.563	12	396.052,342 545.286,877	13	396.053,532 545.298,221	11.406
13	396.053,532 545.298,221	14	396.053,532 545.316,901	18.68	14	396.053,532 545.316,901	15	396.052,924 545.333,136	16.246	15	396.052,924 545.333,136	16	396.052,411 545.346,404	13.278

Punct început	X / Y	Punct sfârșit	X / Y	Lungime segment	Punct început	X / Y	Punct sfârșit	X / Y	Lungime segment	Punct început	X / Y	Punct sfârșit	X / Y	Lungime segment
16	396.052,411 545.346,404	17	396.051,8 545.360,774	14.38 3	17	396.051,8 545.360,774	18	396.053,039 545.377,777	17.04 8	18	396.053,039 545.377,777	19	396.053,438 545.383,258	5.496
19	396.053,438 545.383,258	20	396.054,259 545.394,528	11.3	20	396.054,259 545.394,528	21	396.054,353 545.395,813	1.288	21	396.054,353 545.395,813	22	396.054,444 545.404,834	9.021
22	396.054,444 545.404,834	23	396.053,313 545.410,752	6.025	23	396.053,313 545.410,752	24	396.044,82 545.406,63	9.44	24	396.044,82 545.406,63	25	396.010,08 545.384,59	41.14 2
25	396.010,08 545.384,59	26	396.000,06 545.378,93	11.50 8	26	396.000,06 545.378,93	27	395.966,56 545.352,86	42.44 9	27	395.966,56 545.352,86	28	395.959,93 545.346,12	9.454
28	395.959,93 545.346,12	29	395.953,07 545.336,83	11.54 8	29	395.953,07 545.336,83	30	395.932,99 545.317,88	27.61	30	395.932,99 545.317,88	31	395.916,71 545.297,64	25.97 5
31	395.916,71 545.297,64	32	395.904,74 545.285,63	16.95 6	32	395.904,74 545.285,63	33	395.894,7 545.276,79	13.37 7	33	395.894,7 545.276,79	34	395.889,5 545.268,59	9.71
34	395.889,5 545.268,59	35	395.876,87 545.274,78	14.06 5	35	395.876,87 545.274,78	36	395.861,7 545.286,97	19.46 1	36	395.861,7 545.286,97	37	395.852,41 545.292,33	10.72 5
37	395.852,41 545.292,33	38	395.845,66 545.297,25	8.353	38	395.845,66 545.297,25	39	395.820,32 545.310,98	28.82 1	39	395.820,32 545.310,98	40	395.800,06 545.323,2	23.66
40	395.800,06 545.323,2	41	395.776,47 545.343,49	31.11 5	41	395.776,47 545.343,49	42	395.773,72 545.344,15	2.828	42	395.773,72 545.344,15	43	395.773,09 545.345,42	1.418
43	395.773,09 545.345,42	44	395.768,87 545.347,78	4.835	44	395.768,87 545.347,78	45	395.768,25 545.350,33	2.624	45	395.768,25 545.350,33	46	395.768,91 545.353,51	3.248
46	395.768,91 545.353,51	47	395.767,67 545.356,48	3.218	47	395.767,67 545.356,48	48	395.765,98 545.357,76	2.12	48	395.765,98 545.357,76	49	395.755,83 545.361,22	10.72 4
49	395.755,83 545.361,22	50	395.743,94 545.363,23	12.05 9	50	395.743,94 545.363,23	51	395.735,49 545.364,32	8.52	51	395.735,49 545.364,32	52	395.732,11 545.365,62	3.621
52	395.732,11 545.365,62	53	395.731,26 545.365,2	0.948	53	395.731,26 545.365,2	54	395.724,49 545.366,94	6.99	54	395.724,49 545.366,94	55	395.699,05 545.369,22	25.54 2
55	395.699,05 545.369,22	56	395.692,28 545.370,54	6.897	56	395.692,28 545.370,54	57	395.671,15 545.372,72	21.24 2	57	395.671,15 545.372,72	58	395.669,91 545.384,46	11.80 5
58	395.669,91 545.384,46	59	395.670,49 545.404,81	20.35 8	59	395.670,49 545.404,81	60	395.670,19 545.420,08	15.27 3	60	395.670,19 545.420,08	61	395.668,58 545.431,12	11.15 7
61	395.668,58 545.431,12	62	395.669,05 545.436,2	5.102	62	395.669,05 545.436,2	63	395.671,02 545.444,67	8.696	63	395.671,02 545.444,67	64	395.678,14 545.459,89	16.80 3
64	395.678,14 545.459,89	65	395.682,69 545.471,73	12.68 4	65	395.682,69 545.471,73	66	395.697,53 545.498,14	30.29 4	66	395.697,53 545.498,14	67	395.707,6 545.510,58	16.00 5
67	395.707,6 545.510,58	68	395.712,59 545.525,81	16.02 7	68	395.712,59 545.525,81	69	395.715,4 545.531,73	6.553	69	395.715,4 545.531,73	70	395.724,94 545.559,02	28.90 9
70	395.724,94 545.559,02	71	395.725,122 545.559,504	0.517	71	395.725,122 545.559,504	72	395.719,934 545.557,415	5.593	72	395.719,934 545.557,415	73	395.711,8 545.555,65	8.323
73	395.711,8 545.555,65	74	395.707,984 545.555,736	3.817	74	395.707,984 545.555,736	75	395.701,713 545.541,526	15.53 2	75	395.701,713 545.541,526	76	395.680,63 545.493,757	52.21 5
76	395.680,63 545.493,757	77	395.667,301 545.450,352	45.40 5	77	395.667,301 545.450,352	78	395.635,572 545.404,891	55.43 9	78	395.635,572 545.404,891	79	395.617,938 545.385,888	25.92 4
79	395.617,938 545.385,888	80	395.599,858 545.366,542	26.47 9	80	395.599,858 545.366,542	81	395.582,363 545.350,662	23.62 7	81	395.582,363 545.350,662	82	395.571,773 545.341,048	14.30 3
82	395.571,773 545.341,048	83	395.568,186 545.337,792	4.844	83	395.568,186 545.337,792	84	395.546,669 545.323,144	26.03	84	395.546,669 545.323,144	85	395.537,565 545.316,946	11.01 4
85	395.537,565 545.316,946	86	395.533,245 545.314,005	5.226	86	395.533,245 545.314,005	87	395.529,469 545.310,851	4.92	87	395.529,469 545.310,851	88	395.525,277 545.307,348	5.463
88	395.525,277 545.307,348	89	395.523,782 545.305,657	2.257	89	395.523,782 545.305,657	90	395.519,379 545.300,675	6.649	90	395.519,379 545.300,675	91	395.518,265 545.299,413	1.683
91	395.518,265 545.299,413	92	395.516,616 545.295,644	4.114	92	395.516,616 545.295,644	93	395.511,519 545.283,986	12.72 4	93	395.511,519 545.283,986	94	395.510,211 545.280,996	3.264
94	395.510,211 545.280,996	95	395.507,063 545.277,342	4.823	95	395.507,063 545.277,342	96	395.504,226 545.274,05	4.346	96	395.504,226 545.274,05	97	395.482,805 545.254,727	28.84 9
97	395.482,805 545.254,727	98	395.469,941 545.241,997	18.09 8	98	395.469,941 545.241,997	99	395.454,791 545.225,253	22.58 1	99	395.454,791 545.225,253	100	395.445,088 545.213,158	15.50 6
100	395.445,088 545.213,158	101	395.430,366 545.191,78	25.95 7	101	395.430,366 545.191,78	102	395.419,863 545.175,159	19.66 1	102	395.419,863 545.175,159	103	395.412,674 545.161,717	15.24 4
103	395.412,674 545.161,717	104	395.405,461 545.143,263	19.81 4	104	395.405,461 545.143,263	105	395.401,765 545.130,883	12.92	105	395.401,765 545.130,883	106	395.400,32 545.120,686	10.29 9
106	395.400,32 545.120,686	107	395.400,243 545.110,771	9.915	107	395.400,243 545.110,771	108	395.400,985 545.099,431	11.36 4	108	395.400,985 545.099,431	109	395.404,026 545.080,8	18.87 8
109	395.404,026 545.080,8	110	395.402,916 545.055,684	25.14 1	110	395.402,916 545.055,684	111	395.403,607 545.049,636	6.087	111	395.403,607 545.049,636	112	395.406,647 545.050,165	3.086
112	395.406,647 545.050,165	113	395.436,965 545.053,876	30.54 4	113	395.436,965 545.053,876	114	395.451,93 545.055,385	15.04 1	114	395.451,93 545.055,385	115	395.472,853 545.055,507	20.92 3

Punct început	X / Y	Punct sfârșit	X / Y	Lungime segment	Punct început	X / Y	Punct sfârșit	X / Y	Lungime segment	Punct început	X / Y	Punct sfârșit	X / Y	Lungime segment
115	395.472,853 545.055,507	116	395.505,15 545.053,951	32.33 4	116	395.505,15 545.053,951	117	395.535,956 545.052,401	30.84 5	117	395.535,956 545.052,401	118	395.567,779 545.049,692	31.93 8
118	395.567,779 545.049,692	119	395.590,859 545.049,252	23.08 4	119	395.590,859 545.049,252	120	395.618,885 545.049,256	28.02 6	120	395.618,885 545.049,256	121	395.700,263 545.046,262	81.43 3
121	395.700,263 545.046,262	122	395.772,332 545.044,295	72.09 6	122	395.772,332 545.044,295	123	395.812,35 545.044,127	40.01 8	123	395.812,35 545.044,127	124	395.841,865 545.043,737	29.51 8
124	395.841,865 545.043,737	125	395.857,789 545.045,853	16.06 4	125	395.857,789 545.045,853	126	395.876,681 545.053,205	20.27 2	126	395.876,681 545.053,205	127	395.917,14 545.072,978	45.03 2
127	395.917,14 545.072,978	128	395.930,282 545.079,671	14.74 8	128	395.930,282 545.079,671	129	395.988,434 545.111,123	66.11 3	129	395.988,434 545.111,123	130	396.015,674 545.126,011	31.04 3
130	396.015,674 545.126,011	131	396.017,318 545.129,219	3.605	131	396.017,318 545.129,219	132	396.018,907 545.133,486	4.553	132	396.018,907 545.133,486	1	396.023,114 545.146,685	13.85 3

** Lungimile segmentelor sunt determinate în planul de proiecție Stereo 70 și sunt rotunjite la 1 milimetru.

*** Distanța dintre puncte este formată din segmente cumulate ce sunt mai mici decât valoarea 1 milimetru.

**DATE DESPRE IMOBILUL NR. 7092**

Oficiul de Cadastru și Publicitate Imobiliară ALBA
Biroul de Cadastru și Publicitate Imobiliară Aiud

A. Partea I. Descrierea imobilului

TEREN Extravilan

Adresa: Jud. Alba

Nr. Crt	Nr cadastral Nr. topografic	Suprafața* (mp)	Observații / Referințe
A1		2.609	Sector cadastral:7 Teren neimprejmuit;

B. Partea II. Proprietari și acte

Inscrieri privitoare la dreptul de proprietate și alte drepturi reale		Referințe
1 / 01/01/2023		
Act Normativ nr. 7, din 13/03/1996 emis de PARLAMENT;		
B1	Inscrierea provizorie, drept de PROPRIETATE, dobandit prin Lege, cota actuala 1/1 1) UAT MIRASLĂU, CIF:9999999999999	A1

C. Partea III. SARCINI .

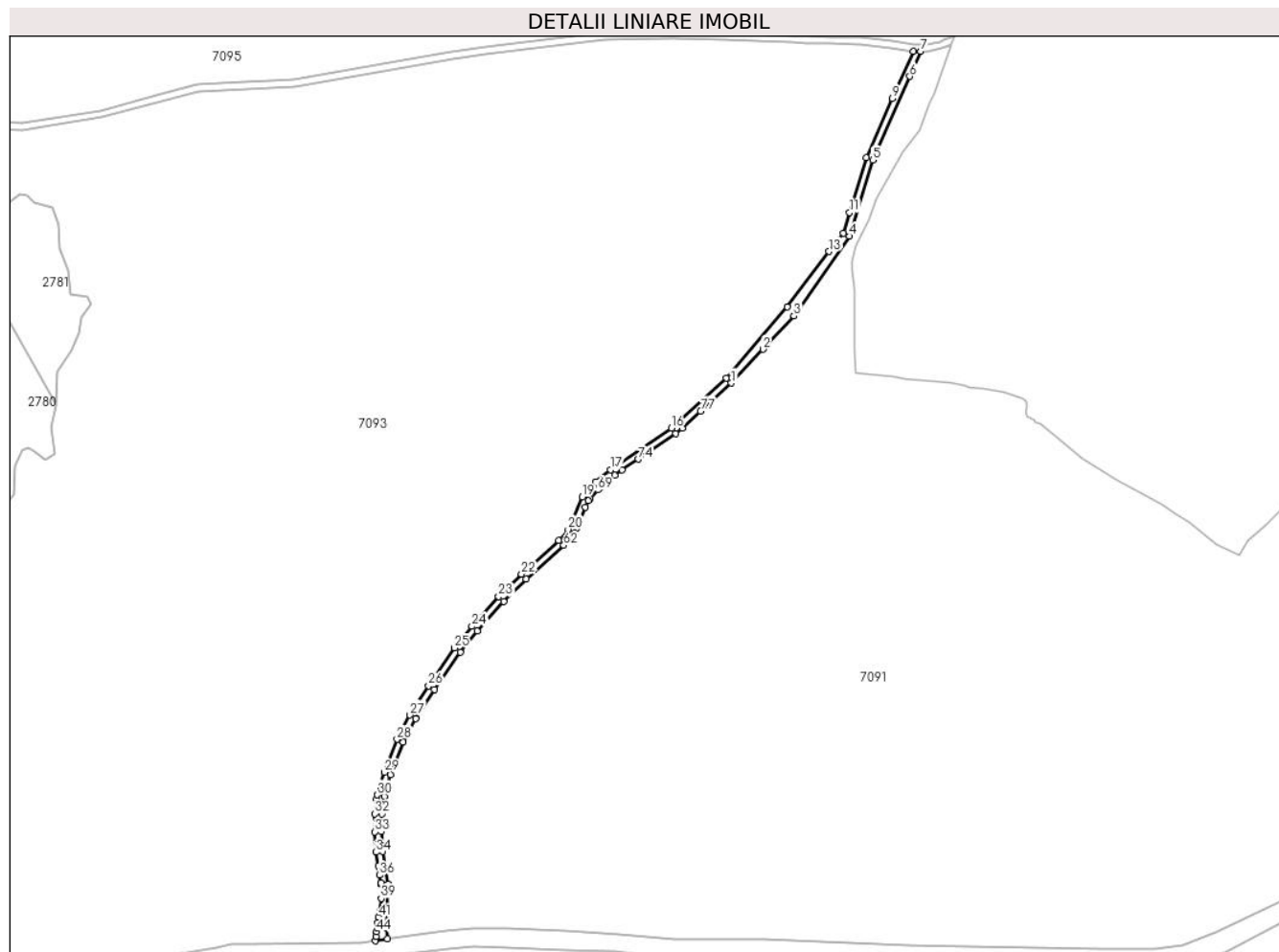
Inscrieri privind dezmembramintele dreptului de proprietate, drepturi reale de garanție și sarcini	Referințe
NU SUNT	

Anexa Nr. 1 La Partea I

Teren

Nr cadastral	Suprafața (mp)*	Observații / Referințe
	2.609	

* Suprafața este determinată în planul de proiecție Stereo 70.



Date referitoare la teren

Crt	Categorie folosință	Intravilan	Suprafața (mp)	Tarla	Parcelă	Nr. topo	Observații / Referințe
1	drum	NU	2.609	-	-	-	

Lungime Segmente

1) Valorile lungimilor segmentelor sunt obținute din proiecție în plan.

Punct început	X / Y	Punct sfârșit	X / Y	Lungime segment
1	395.599,858 545.366,542	2	395.617,938 545.385,888	26.479
4	395.667,301 545.450,352	5	395.680,63 545.493,757	45.405
7	395.707,984 545.555,736	8	395.703,655 545.555,833	4.33
10	395.676,876 545.495,157	11	395.667,275 545.463,894	32.704
13	395.655,66 545.441,621	14	395.631,76 545.410,102	39.556
16	395.565,704 545.340,941	17	395.530,831 545.317,201	42.187
2	395.617,938 545.385,888	3	395.635,572 545.404,891	25.924
5	395.680,63 545.493,757	6	395.701,713 545.541,526	52.215
8	395.703,655 545.555,833	9	395.691,834 545.529,049	29.277
11	395.667,275 545.463,894	12	395.663,686 545.452,205	12.228
14	395.631,76 545.410,102	15	395.596,947 545.369,299	53.636
17	395.530,831 545.317,201	18	395.522,48 545.310,224	10.882
3	395.635,572 545.404,891	4	395.667,301 545.450,352	55.439
6	395.701,713 545.541,526	7	395.707,984 545.555,736	15.532
9	395.691,834 545.529,049	10	395.676,876 545.495,157	37.046
12	395.663,686 545.452,205	13	395.655,66 545.441,621	13.283
15	395.596,947 545.369,299	16	395.565,704 545.340,941	42.194
18	395.522,48 545.310,224	19	395.514,851 545.301,592	11.52

Punct început	X / Y	Punct sfârșit	X / Y	Lungime segment	Punct început	X / Y	Punct sfârșit	X / Y	Lungime segment	Punct început	X / Y	Punct sfârșit	X / Y	Lungime segment
19	395.514,851 545.301,592	20	395.506,788 545.283,15	20.128	20	395.506,788 545.283,15	21	395.501,36 545.276,852	8.314	21	395.501,36 545.276,852	22	395.480,057 545.257,635	28.69
22	395.480,057 545.257,635	23	395.467,049 545.244,763	18.3	23	395.467,049 545.244,763	24	395.451,745 545.227,849	22.81	24	395.451,745 545.227,849	25	395.441,877 545.215,547	15.771
25	395.441,877 545.215,547	26	395.427,027 545.193,984	26.182	26	395.427,027 545.193,984	27	395.416,404 545.177,173	19.886	27	395.416,404 545.177,173	28	395.409,035 545.163,394	15.626
28	395.409,035 545.163,394	29	395.401,676 545.144,565	20.216	29	395.401,676 545.144,565	30	395.397,846 545.131,741	13.384	30	395.397,846 545.131,741	31	395.397,533 545.129,528	2.235
31	395.397,533 545.129,528	32	395.396,322 545.120,983	8.63	32	395.396,322 545.120,983	33	395.396,242 545.110,656	10.327	33	395.396,242 545.110,656	34	395.397,006 545.098,978	11.703
34	395.397,006 545.098,978	35	395.398,275 545.091,195	7.886	35	395.398,275 545.091,195	36	395.399,14 545.085,889	5.376	36	395.399,14 545.085,889	37	395.399,838 545.081,606	4.34
37	395.399,838 545.081,606	38	395.400,011 545.080,548	1.072	38	395.400,011 545.080,548	39	395.400,016 545.072,662	7.886	39	395.400,016 545.072,662	40	395.398,984 545.065,125	7.607
40	395.398,984 545.065,125	41	395.398,548 545.061,936	3.219	41	395.398,548 545.061,936	42	395.398,122 545.058,744	3.22	42	395.398,122 545.058,744	43	395.397,779 545.056,173	2.594
43	395.397,779 545.056,173	44	395.397,436 545.053,596	2.6	44	395.397,436 545.053,596	45	395.397,092 545.051,018	2.601	45	395.397,092 545.051,018	46	395.396,748 545.048,441	2.6
46	395.396,748 545.048,441	47	395.403,607 545.049,636	6.962	47	395.403,607 545.049,636	48	395.402,916 545.055,684	6.087	48	395.402,916 545.055,684	49	395.404,026 545.080,8	25.141
49	395.404,026 545.080,8	50	395.400,985 545.099,431	18.878	50	395.400,985 545.099,431	51	395.400,243 545.110,771	11.364	51	395.400,243 545.110,771	52	395.400,32 545.120,686	9.915
52	395.400,32 545.120,686	53	395.401,765 545.130,883	10.299	53	395.401,765 545.130,883	54	395.405,461 545.143,263	12.92	54	395.405,461 545.143,263	55	395.412,674 545.161,717	19.814
55	395.412,674 545.161,717	56	395.419,863 545.175,159	15.244	56	395.419,863 545.175,159	57	395.430,366 545.191,78	19.661	57	395.430,366 545.191,78	58	395.445,088 545.213,158	25.957
58	395.445,088 545.213,158	59	395.454,791 545.225,253	15.506	59	395.454,791 545.225,253	60	395.469,941 545.241,997	22.581	60	395.469,941 545.241,997	61	395.482,805 545.254,727	18.098
61	395.482,805 545.254,727	62	395.504,226 545.274,05	28.849	62	395.504,226 545.274,05	63	395.507,063 545.277,342	4.346	63	395.507,063 545.277,342	64	395.510,211 545.280,996	4.823
64	395.510,211 545.280,996	65	395.511,519 545.283,986	3.264	65	395.511,519 545.283,986	66	395.516,616 545.295,644	12.724	66	395.516,616 545.295,644	67	395.518,265 545.299,413	4.114
67	395.518,265 545.299,413	68	395.519,379 545.300,675	1.683	68	395.519,379 545.300,675	69	395.523,782 545.305,657	6.649	69	395.523,782 545.305,657	70	395.525,277 545.307,348	2.257
70	395.525,277 545.307,348	71	395.529,469 545.310,851	5.463	71	395.529,469 545.310,851	72	395.533,245 545.314,005	4.92	72	395.533,245 545.314,005	73	395.537,565 545.316,946	5.226
73	395.537,565 545.316,946	74	395.546,669 545.323,144	11.014	74	395.546,669 545.323,144	75	395.568,186 545.337,792	26.03	75	395.568,186 545.337,792	76	395.571,773 545.341,048	4.844
76	395.571,773 545.341,048	77	395.582,363 545.350,662	14.303	77	395.582,363 545.350,662	1	395.599,858 545.366,542	23.627					

** Lungimile segmentelor sunt determinate în planul de proiecție Stereo 70 și sunt rotunjite la 1 milimetru.

*** Distanța dintre puncte este formată din segmente cumulate ce sunt mai mici decât valoarea 1 milimetru.

**DATE DESPRE IMOBILUL NR. 7093**

Oficiul de Cadastru și Publicitate Imobiliară ALBA
Biroul de Cadastru și Publicitate Imobiliară Aiud

A. Partea I. Descrierea imobilului

TEREN Extravilan

Adresa: Jud. Alba

Nr. Crt	Nr cadastral Nr. topografic	Suprafața* (mp)	Observații / Referințe
A1		455.721	Sector cadastral:7 Teren neimprejmuit;

B. Partea II. Proprietari și acte

Inscrieri privitoare la dreptul de proprietate și alte drepturi reale		Referințe
1 / 01/01/2023		
Act Normativ nr. 7, din 13/03/1996 emis de PARLAMENT;		
B1	Inscrierea provizorie, drept de PROPRIETATE, dobandit prin Lege, cota actuala 1/1 1) UAT MIRASLĂU, CIF:9999999999999	A1

C. Partea III. SARCINI .

Inscrieri privind dezmembramintele dreptului de proprietate, drepturi reale de garanție și sarcini	Referințe
NU SUNT	

Punct început	X / Y	Punct sfârșit	X / Y	Lungime segment	Punct început	X / Y	Punct sfârșit	X / Y	Lungime segment	Punct început	X / Y	Punct sfârșit	X / Y	Lungime segment
13	395.634,071 545.560,796	14	395.595,141 545.562,525	38.968	14	395.595,141 545.562,525	15	395.565,634 545.562,927	29.515	15	395.565,634 545.562,927	16	395.527,552 545.562,476	38.085
16	395.527,552 545.562,476	17	395.459,702 545.554,407	68.328	17	395.459,702 545.554,407	18	395.440,925 545.551,351	19.024	18	395.440,925 545.551,351	19	395.350,788 545.535,799	91.469
19	395.350,788 545.535,799	20	395.295,424 545.532,789	55.446	20	395.295,424 545.532,789	21	395.269,328 545.526,076	26.946	21	395.269,328 545.526,076	22	395.240,886 545.518,234	29.503
22	395.240,886 545.518,234	23	395.195,362 545.511,102	46.079	23	395.195,362 545.511,102	24	395.171,366 545.511,376	23.998	24	395.171,366 545.511,376	25	395.144,745 545.514,025	26.752
25	395.144,745 545.514,025	26	395.112,803 545.522,067	32.939	26	395.112,803 545.522,067	27	395.083,25 545.533,142	31.563	27	395.083,25 545.533,142	28	395.045,08 545.555,135	44.053
28	395.045,08 545.555,135	29	395.032,485 545.562,264	14.473	29	395.032,485 545.562,264	30	395.015,937 545.555,175	18.003	30	395.015,937 545.555,175	31	394.990,031 545.553,657	25.953
31	394.990,031 545.553,657	32	394.986,544 545.560,97	8.102	32	394.986,544 545.560,97	33	394.976,041 545.558,137	10.878	33	394.976,041 545.558,137	34	394.982,756 545.555,41	7.248
34	394.982,756 545.555,41	35	394.993,476 545.551,131	11.542	35	394.993,476 545.551,131	36	394.998,821 545.547,212	6.628	36	394.998,821 545.547,212	37	395.012,308 545.537,32	16.726
37	395.012,308 545.537,32	38	395.022,844 545.529,064	13.385	38	395.022,844 545.529,064	39	395.029,755 545.523,649	8.78	39	395.029,755 545.523,649	40	395.038,993 545.507,834	18.315
40	395.038,993 545.507,834	41	395.045,97 545.503,279	8.332	41	395.045,97 545.503,279	42	395.054,048 545.498,006	9.647	42	395.054,048 545.498,006	43	395.069,43 545.500,229	15.542
43	395.069,43 545.500,229	44	395.078,565 545.501,852	9.278	44	395.078,565 545.501,852	45	395.093,787 545.502,256	15.227	45	395.093,787 545.502,256	46	395.095,233 545.501,935	1.481
46	395.095,233 545.501,935	47	395.104,749 545.499,823	9.748	47	395.104,749 545.499,823	48	395.109,823 545.492,724	8.726	48	395.109,823 545.492,724	49	395.115,39 545.480,1	13.797
49	395.115,39 545.480,1	50	395.108,755 545.474,654	8.584	50	395.108,755 545.474,654	51	395.118,842 545.462,454	15.83	51	395.118,842 545.462,454	52	395.127,752 545.451,076	14.452
52	395.127,752 545.451,076	53	395.129,801 545.448,46	3.323	53	395.129,801 545.448,46	54	395.140,356 545.436,492	15.957	54	395.140,356 545.436,492	55	395.146,648 545.434,059	6.746
55	395.146,648 545.434,059	56	395.151,213 545.438,175	6.147	56	395.151,213 545.438,175	57	395.149,289 545.443,591	5.748	57	395.149,289 545.443,591	58	395.148,882 545.448,46	4.886
58	395.148,882 545.448,46	59	395.156,136 545.456,987	11.195	59	395.156,136 545.456,987	60	395.159,844 545.463,469	7.468	60	395.159,844 545.463,469	61	395.171,676 545.462,812	11.85
61	395.171,676 545.462,812	62	395.178,922 545.469,756	10.036	62	395.178,922 545.469,756	63	395.187,246 545.469,553	8.326	63	395.187,246 545.469,553	64	395.193,946 545.474,015	8.05
64	395.193,946 545.474,015	65	395.198,003 545.473,812	4.062	65	395.198,003 545.473,812	66	395.202,064 545.469,553	5.885	66	395.202,064 545.469,553	67	395.212,106 545.466,67	10.448
67	395.212,106 545.466,67	68	395.215,667 545.456,985	10.319	68	395.215,667 545.456,985	69	395.216,135 545.443,631	13.362	69	395.216,135 545.443,631	70	395.221,608 545.431,179	13.602
70	395.221,608 545.431,179	71	395.222,599 545.417,491	13.724	71	395.222,599 545.417,491	72	395.231,962 545.416,041	9.475	72	395.231,962 545.416,041	73	395.234,14 545.411,444	5.087
73	395.234,14 545.411,444	74	395.228,797 545.404,115	9.07	74	395.228,797 545.404,115	75	395.227,733 545.394,883	9.293	75	395.227,733 545.394,883	76	395.223,542 545.385,371	10.394
76	395.223,542 545.385,371	77	395.215,398 545.373,113	14.717	77	395.215,398 545.373,113	78	395.214,694 545.354,662	18.464	78	395.214,694 545.354,662	79	395.214,659 545.353,768	0.895
79	395.214,659 545.353,768	80	395.211,76 545.341,624	12.485	80	395.211,76 545.341,624	81	395.213,861 545.326,167	15.599	81	395.213,861 545.326,167	82	395.208,315 545.322,704	6.538
82	395.208,315 545.322,704	83	395.205,068 545.325,341	4.183	83	395.205,068 545.325,341	84	395.202,333 545.327,582	3.536	84	395.202,333 545.327,582	85	395.198,698 545.329,634	4.174
85	395.198,698 545.329,634	86	395.194,84 545.328,091	4.155	86	395.194,84 545.328,091	87	395.191,283 545.319,094	9.675	87	395.191,283 545.319,094	88	395.190,394 545.302,988	16.131
88	395.190,394 545.302,988	89	395.184,367 545.295,925	9.285	89	395.184,367 545.295,925	90	395.176,582 545.297,318	7.909	90	395.176,582 545.297,318	91	395.172,83 545.297,989	3.812
91	395.172,83 545.297,989	92	395.161,713 545.302,099	11.852	92	395.161,713 545.302,099	93	395.122,25 545.312,429	40.793	93	395.122,25 545.312,429	94	395.096,168 545.318,768	26.841
94	395.096,168 545.318,768	95	395.082,341 545.322,128	14.229	95	395.082,341 545.322,128	96	395.065,222 545.329,46	18.623	96	395.065,222 545.329,46	97	395.024,87 545.333,792	40.584
97	395.024,87 545.333,792	98	395.022,393 545.333,63	2.482	98	395.022,393 545.333,63	99	394.977,434 545.330,69	45.055	99	394.977,434 545.330,69	100	394.908,93 545.341,909	69.417
100	394.908,93 545.341,909	101	394.904,806 545.342,584	4.179	101	394.904,806 545.342,584	102	394.896,203 545.338,9	9.359	102	394.896,203 545.338,9	103	394.891,499 545.341,203	5.238
103	394.891,499 545.341,203	104	394.881,354 545.351,733	14.622	104	394.881,354 545.351,733	105	394.866,437 545.359,87	16.992	105	394.866,437 545.359,87	106	394.850,66 545.368,475	17.971
106	394.850,66 545.368,475	107	394.829,622 545.379,95	23.964	107	394.829,622 545.379,95	108	394.797,235 545.402,956	39.726	108	394.797,235 545.402,956	109	394.776,965 545.410,881	21.764
109	394.776,965 545.410,881	110	394.757,564 545.409,539	19.447	110	394.757,564 545.409,539	111	394.736,822 545.412,157	20.907	111	394.736,822 545.412,157	112	394.726,624 545.400,007	15.863

Punct început	X / Y	Punct sfârșit	X / Y	Lungime segment	Punct început	X / Y	Punct sfârșit	X / Y	Lungime segment	Punct început	X / Y	Punct sfârșit	X / Y	Lungime segment
112	394.726,624 545.400,007	113	394.721,041 545.393,16	8.835	113	394.721,041 545.393,16	114	394.711,903 545.380,352	15.734	114	394.711,903 545.380,352	115	394.704,925 545.373,885	9.514
115	394.704,925 545.373,885	116	394.695,138 545.368,02	11.41	116	394.695,138 545.368,02	117	394.686,709 545.366,961	8.495	117	394.686,709 545.366,961	118	394.680,305 545.365,389	6.594
118	394.680,305 545.365,389	119	394.673,247 545.357,458	10.617	119	394.673,247 545.357,458	120	394.668,932 545.349,088	9.417	120	394.668,932 545.349,088	121	394.665,125 545.345,538	5.205
121	394.665,125 545.345,538	122	394.660,81 545.343,129	4.942	122	394.660,81 545.343,129	123	394.654,339 545.343,509	6.482	123	394.654,339 545.343,509	124	394.644,441 545.347,568	10.698
124	394.644,441 545.347,568	125	394.637,082 545.349,849	7.704	125	394.637,082 545.349,849	126	394.630,735 545.349,342	6.367	126	394.630,735 545.349,342	127	394.622,994 545.346,934	8.107
127	394.622,994 545.346,934	128	394.617,664 545.342,875	6.7	128	394.617,664 545.342,875	129	394.616,776 545.337,169	5.775	129	394.616,776 545.337,169	130	394.615,0 545.333,238	4.314
130	394.615,0 545.333,238	131	394.610,051 545.332,098	5.079	131	394.610,051 545.332,098	132	394.606,497 545.332,478	3.574	132	394.606,497 545.332,478	133	394.602,057 545.334,252	4.781
133	394.602,057 545.334,252	134	394.595,964 545.334,887	6.126	134	394.595,964 545.334,887	135	394.593,554 545.332,224	3.592	135	394.593,554 545.332,224	136	394.592,794 545.326,264	6.008
136	394.592,794 545.326,264	137	394.585,813 545.322,587	7.89	137	394.585,813 545.322,587	138	394.579,434 545.315,155	9.794	138	394.579,434 545.315,155	139	394.578,8 545.309,068	6.12
139	394.578,8 545.309,068	140	394.580,701 545.303,488	5.895	140	394.580,701 545.303,488	141	394.585,018 545.302,094	4.536	141	394.585,018 545.302,094	142	394.588,823 545.300,446	4.147
142	394.588,823 545.300,446	143	394.588,407 545.294,848	5.613	143	394.588,407 545.294,848	144	394.583,661 545.292,304	5.385	144	394.583,661 545.292,304	145	394.576,133 545.290,809	7.675
145	394.576,133 545.290,809	146	394.567,582 545.282,009	12.27	146	394.567,582 545.282,009	147	394.558,228 545.274,61	11.927	147	394.558,228 545.274,61	148	394.551,77 545.273,69	6.523
148	394.551,77 545.273,69	149	394.547,58 545.274,324	4.238	149	394.547,58 545.274,324	150	394.546,311 545.277,494	3.415	150	394.546,311 545.277,494	151	394.549,231 545.283,834	6.98
151	394.549,231 545.283,834	152	394.547,834 545.289,413	5.751	152	394.547,834 545.289,413	153	394.544,746 545.292,499	4.366	153	394.544,746 545.292,499	154	394.538,699 545.291,949	6.072
154	394.538,699 545.291,949	155	394.536,16 545.289,16	3.772	155	394.536,16 545.289,16	156	394.537,429 545.283,201	6.093	156	394.537,429 545.283,201	157	394.537,936 545.276,353	6.867
157	394.537,936 545.276,353	158	394.535,4 545.275,719	2.614	158	394.535,4 545.275,719	159	394.526,583 545.278,274	9.18	159	394.526,583 545.278,274	160	394.518,288 545.279,601	8.4
160	394.518,288 545.279,601	161	394.513,005 545.274,85	7.105	161	394.513,005 545.274,85	162	394.511,736 545.268,003	6.964	162	394.511,736 545.268,003	163	394.517,701 545.261,282	8.986
163	394.517,701 545.261,282	164	394.516,431 545.258,365	3.181	164	394.516,431 545.258,365	165	394.512,752 545.257,605	3.757	165	394.512,752 545.257,605	166	394.504,779 545.257,525	7.973
166	394.504,779 545.257,525	167	394.499,735 545.257,447	5.045	167	394.499,735 545.257,447	168	394.490,656 545.253,493	9.903	168	394.490,656 545.253,493	169	394.481,279 545.248,348	10.696
169	394.481,279 545.248,348	170	394.470,112 545.243,149	12.318	170	394.470,112 545.243,149	171	394.462,628 545.242,515	7.511	171	394.462,628 545.242,515	172	394.457,675 545.243,023	4.979
172	394.457,675 545.243,023	173	394.449,175 545.243,657	8.524	173	394.449,175 545.243,657	174	394.443,158 545.238,047	8.227	174	394.443,158 545.238,047	175	394.436,096 545.237,057	7.131
175	394.436,096 545.237,057	176	394.430,034 545.238,095	6.15	176	394.430,034 545.238,095	177	394.425,318 545.244,291	7.787	177	394.425,318 545.244,291	178	394.421,763 545.247,714	4.935
178	394.421,763 545.247,714	179	394.418,084 545.256,464	9.492	179	394.418,084 545.256,464	180	394.414,785 545.268,003	12.001	180	394.414,785 545.268,003	181	394.408,945 545.279,46	12.86
181	394.408,945 545.279,46	182	394.405,266 545.287,195	8.565	182	394.405,266 545.287,195	183	394.405,138 545.297,085	9.891	183	394.405,138 545.297,085	184	394.406,66 545.307,738	10.761
184	394.406,66 545.307,738	185	394.406,535 545.313,57	5.833	185	394.406,535 545.313,57	186	394.403,234 545.320,798	7.946	186	394.403,234 545.320,798	187	394.395,874 545.329,612	11.483
187	394.395,874 545.329,612	188	394.392,954 545.335,826	6.866	188	394.392,954 545.335,826	189	394.368,959 545.308,765	36.167	189	394.368,959 545.308,765	190	394.350,45 545.285,537	29.701
190	394.350,45 545.285,537	191	394.334,361 545.267,349	24.283	191	394.334,361 545.267,349	192	394.326,784 545.249,89	19.032	192	394.326,784 545.249,89	193	394.329,591 545.235,8	14.367
193	394.329,591 545.235,8	194	394.331,893 545.222,575	13.424	194	394.331,893 545.222,575	195	394.330,073 545.202,549	20.109	195	394.330,073 545.202,549	196	394.324,88 545.174,842	28.189
196	394.324,88 545.174,842	197	394.321,931 545.154,982	20.078	197	394.321,931 545.154,982	198	394.319,109 545.126,072	29.047	198	394.319,109 545.126,072	199	394.319,517 545.110,326	15.751
199	394.319,517 545.110,326	200	394.321,548 545.099,832	10.689	200	394.321,548 545.099,832	201	394.324,14 545.081,575	18.44	201	394.324,14 545.081,575	202	394.319,588 545.055,796	26.178
202	394.319,588 545.055,796	203	394.308,171 545.048,341	13.635	203	394.308,171 545.048,341	204	394.314,062 545.048,812	5.91	204	394.314,062 545.048,812	205	394.315,259 545.048,907	1.201
205	394.315,259 545.048,907	206	394.317,179 545.033,744	15.284	206	394.317,179 545.033,744	207	394.323,755 545.029,721	7.709	207	394.323,755 545.029,721	208	394.340,171 545.025,642	16.915
208	394.340,171 545.025,642	209	394.354,6 545.021,411	15.037	209	394.354,6 545.021,411	210	394.367,721 545.015,836	14.256	210	394.367,721 545.015,836	211	394.391,983 545.020,427	24.693

Punct început	X / Y	Punct sfârșit	X / Y	Lungime segment	Punct început	X / Y	Punct sfârșit	X / Y	Lungime segment	Punct început	X / Y	Punct sfârșit	X / Y	Lungime segment
211	394.391,983 545.020,427	212	394.411,332 545.021,311	19.369	212	394.411,332 545.021,311	213	394.414,858 545.021,19	3.528	213	394.414,858 545.021,19	214	394.420,7 545.020,991	5.845
214	394.420,7 545.020,991	215	394.433,933 545.026,207	14.224	215	394.433,933 545.026,207	216	394.442,25 545.033,143	10.83	216	394.442,25 545.033,143	217	394.442,972 545.040,947	7.837
217	394.442,972 545.040,947	218	394.443,988 545.051,93	11.03	218	394.443,988 545.051,93	219	394.453,495 545.107,953	56.824	219	394.453,495 545.107,953	220	394.467,792 545.104,023	14.827
220	394.467,792 545.104,023	221	394.477,609 545.098,015	11.51	221	394.477,609 545.098,015	222	394.491,824 545.091,699	15.555	222	394.491,824 545.091,699	223	394.521,273 545.088,135	29.664
223	394.521,273 545.088,135	224	394.527,168 545.058,566	30.151	224	394.527,168 545.058,566	225	394.553,076 545.031,112	37.748	225	394.553,076 545.031,112	226	394.570,586 545.006,913	29.87
226	394.570,586 545.006,913	227	394.615,845 545.019,025	46.852	227	394.615,845 545.019,025	228	394.621,898 545.009,185	11.553	228	394.621,898 545.009,185	229	394.639,196 544.994,323	22.806
229	394.639,196 544.994,323	230	394.633,231 544.988,907	8.057	230	394.633,231 544.988,907	231	394.620,144 544.978,27	16.865	231	394.620,144 544.978,27	232	394.591,88 544.972,495	28.848
232	394.591,88 544.972,495	233	394.584,767 544.972,076	7.125	233	394.584,767 544.972,076	234	394.578,819 544.972,387	5.956	234	394.578,819 544.972,387	235	394.570,196 544.974,664	8.919
235	394.570,196 544.974,664	236	394.558,256 544.974,174	11.95	236	394.558,256 544.974,174	237	394.539,297 544.971,069	19.212	237	394.539,297 544.971,069	238	394.529,615 544.963,218	12.465
238	394.529,615 544.963,218	239	394.527,058 544.961,63	3.01	239	394.527,058 544.961,63	240	394.523,205 544.959,236	4.536	240	394.523,205 544.959,236	241	394.570,185 544.964,318	47.254
241	394.570,185 544.964,318	242	394.598,712 544.964,882	28.533	242	394.598,712 544.964,882	243	394.611,942 544.965,983	13.276	243	394.611,942 544.965,983	244	394.623,731 544.966,874	11.823
244	394.623,731 544.966,874	245	394.646,863 544.966,854	23.132	245	394.646,863 544.966,854	246	394.651,916 544.967,202	5.065	246	394.651,916 544.967,202	247	394.659,173 544.969,041	7.486
247	394.659,173 544.969,041	248	394.670,162 544.975,192	12.593	248	394.670,162 544.975,192	249	394.686,83 544.978,999	17.097	249	394.686,83 544.978,999	250	394.697,188 544.979,113	10.359
250	394.697,188 544.979,113	251	394.713,426 544.973,776	17.093	251	394.713,426 544.973,776	252	394.731,382 544.969,594	18.437	252	394.731,382 544.969,594	253	394.744,05 544.967,596	12.825
253	394.744,05 544.967,596	254	394.758,575 544.964,566	14.838	254	394.758,575 544.964,566	255	394.789,466 544.956,819	31.848	255	394.789,466 544.956,819	256	394.803,136 544.953,67	14.028
256	394.803,136 544.953,67	257	394.811,02 544.954,403	7.918	257	394.811,02 544.954,403	258	394.838,873 544.958,916	28.216	258	394.838,873 544.958,916	259	394.864,619 544.963,034	26.073
259	394.864,619 544.963,034	260	394.888,291 544.967,386	24.069	260	394.888,291 544.967,386	261	394.944,877 544.986,947	59.872	261	394.944,877 544.986,947	262	394.969,558 544.987,98	24.703
262	394.969,558 544.987,98	263	394.995,084 544.990,597	25.66	263	394.995,084 544.990,597	264	395.018,323 544.992,304	23.302	264	395.018,323 544.992,304	265	395.054,861 544.996,626	36.793
265	395.054,861 544.996,626	266	395.074,694 544.998,039	19.883	266	395.074,694 544.998,039	267	395.094,766 545.002,893	20.651	267	395.094,766 545.002,893	268	395.123,985 545.009,998	30.07
268	395.123,985 545.009,998	269	395.149,848 545.015,07	26.356	269	395.149,848 545.015,07	270	395.226,121 545.030,764	77.871	270	395.226,121 545.030,764	271	395.285,518 545.041,322	60.328
271	395.285,518 545.041,322	272	395.305,897 545.044,435	20.615	272	395.305,897 545.044,435	273	395.314,253 545.046,327	8.568	273	395.314,253 545.046,327	274	395.324,653 545.046,895	10.415
274	395.324,653 545.046,895	275	395.388,719 545.047,043	64.066	275	395.388,719 545.047,043	276	395.396,748 545.048,441	8.15	276	395.396,748 545.048,441	277	395.397,092 545.051,018	2.6
277	395.397,092 545.051,018	278	395.397,436 545.053,596	2.601	278	395.397,436 545.053,596	279	395.397,779 545.056,173	2.6	279	395.397,779 545.056,173	280	395.398,122 545.058,744	2.594
280	395.398,122 545.058,744	281	395.398,548 545.061,936	3.22	281	395.398,548 545.061,936	282	395.398,984 545.065,125	3.219	282	395.398,984 545.065,125	283	395.400,016 545.072,662	7.607
283	395.400,016 545.072,662	284	395.400,011 545.080,548	7.886	284	395.400,011 545.080,548	285	395.399,838 545.081,606	1.072	285	395.399,838 545.081,606	286	395.399,14 545.085,889	4.34
286	395.399,14 545.085,889	287	395.398,275 545.091,195	5.376	287	395.398,275 545.091,195	288	395.397,006 545.098,978	7.886	288	395.397,006 545.098,978	289	395.396,242 545.110,656	11.703
289	395.396,242 545.110,656	290	395.396,322 545.120,983	10.327	290	395.396,322 545.120,983	291	395.397,533 545.129,528	8.63	291	395.397,533 545.129,528	292	395.397,846 545.131,741	2.235
292	395.397,846 545.131,741	293	395.401,676 545.144,565	13.384	293	395.401,676 545.144,565	294	395.409,035 545.163,394	20.216	294	395.409,035 545.163,394	295	395.416,404 545.177,173	15.626
295	395.416,404 545.177,173	296	395.427,027 545.193,984	19.886	296	395.427,027 545.193,984	297	395.441,877 545.215,547	26.182	297	395.441,877 545.215,547	298	395.451,745 545.227,849	15.771
298	395.451,745 545.227,849	299	395.467,049 545.244,763	22.81	299	395.467,049 545.244,763	300	395.480,057 545.257,635	18.3	300	395.480,057 545.257,635	301	395.501,36 545.276,852	28.69
301	395.501,36 545.276,852	302	395.506,788 545.283,15	8.314	302	395.506,788 545.283,15	303	395.514,851 545.301,592	20.128	303	395.514,851 545.301,592	304	395.522,48 545.310,224	11.52
304	395.522,48 545.310,224	305	395.530,831 545.317,201	10.882	305	395.530,831 545.317,201	306	395.565,704 545.340,941	42.187	306	395.565,704 545.340,941	1	395.596,947 545.369,299	42.194

**** Lungimile segmentelor sunt determinate în planul de proiecție Stereo 70 și sunt rotunjite la 1 milimetru.**

***** Distanța dintre puncte este formată din segmente cumulate ce sunt mai mici decât valoarea 1 milimetru.**

**DATE DESPRE IMOBILUL NR. 7094**

Oficiul de Cadastru și Publicitate Imobiliară ALBA
Biroul de Cadastru și Publicitate Imobiliară Aiud

A. Partea I. Descrierea imobilului

TEREN Extravilan

Adresa: Jud. Alba

Nr. Crt	Nr cadastral Nr. topografic	Suprafața* (mp)	Observații / Referințe
A1		2.844	Sector cadastral:7 Teren neimprejmuit;

B. Partea II. Proprietari și acte

Inscrieri privitoare la dreptul de proprietate și alte drepturi reale		Referințe
1 / 01/01/2023		
Act Normativ nr. 7, din 13/03/1996 emis de PARLAMENT;		
B1	Inscrierea provizorie, drept de PROPRIETATE, dobandit prin Lege, cota actuala 1/1 1) UAT MIRASLĂU, CIF:9999999999999	A1

C. Partea III. SARCINI .

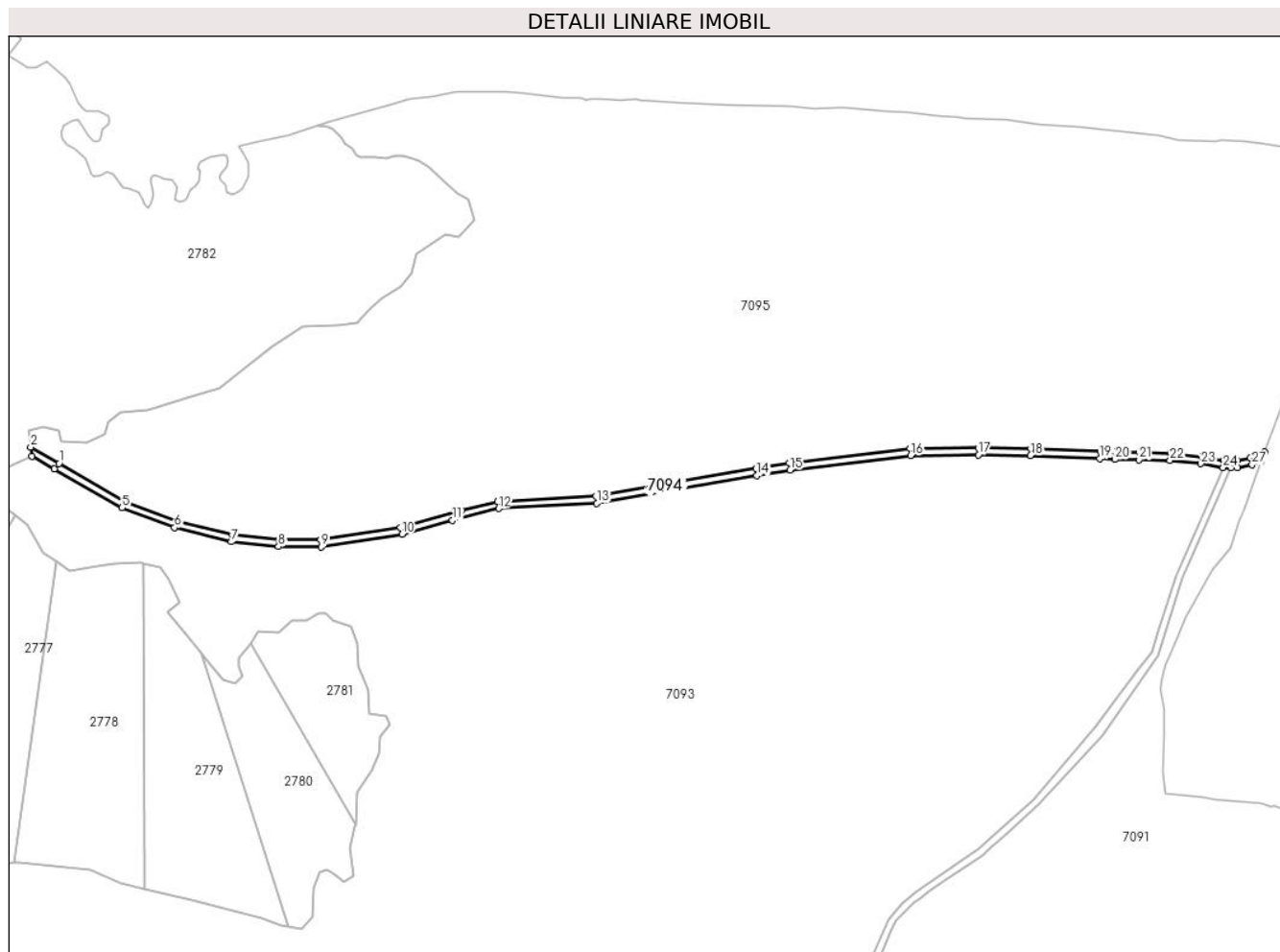
Inscrieri privind dezmembramintele dreptului de proprietate, drepturi reale de garanție și sarcini	Referințe
NU SUNT	

Anexa Nr. 1 La Partea I

Teren

Nr cadastral	Suprafața (mp)*	Observații / Referințe
	2.844	

* Suprafața este determinată în planul de proiecție Stereo 70.



Date referitoare la teren

Crt	Categorie folosință	Intra vilan	Suprafața (mp)	Tarla	Parcelă	Nr. topo	Observații / Referințe
1	drum	NU	2.844	-	-	-	

Lungime Segmente

1) Valorile lungimilor segmentelor sunt obținute din proiecție în plan.

Punct început	X / Y	Punct sfârșit	X / Y	Lungime segment	Punct început	X / Y	Punct sfârșit	X / Y	Lungime segment	Punct început	X / Y	Punct sfârșit	X / Y	Lungime segment
1	395.047,704 545.558,239	2	395.031,752 545.567,321	18.356	2	395.031,752 545.567,321	3	395.032,485 545.562,264	5.113	3	395.032,485 545.562,264	4	395.045,08 545.555,135	14.473
4	395.045,08 545.555,135	5	395.083,25 545.533,142	44.053	5	395.083,25 545.533,142	6	395.112,803 545.522,067	31.569	6	395.112,803 545.522,067	7	395.144,745 545.514,025	32.939
7	395.144,745 545.514,025	8	395.171,366 545.511,376	26.752	8	395.171,366 545.511,376	9	395.195,362 545.511,102	23.998	9	395.195,362 545.511,102	10	395.240,886 545.518,234	46.079
10	395.240,886 545.518,234	11	395.269,328 545.526,076	29.503	11	395.269,328 545.526,076	12	395.295,424 545.532,789	26.946	12	395.295,424 545.532,789	13	395.350,788 545.535,799	55.446
13	395.350,788 545.535,799	14	395.440,925 545.551,351	91.469	14	395.440,925 545.551,351	15	395.459,702 545.554,407	19.024	15	395.459,702 545.554,407	16	395.527,552 545.562,476	68.328
16	395.527,552 545.562,476	17	395.565,634 545.562,927	38.085	17	395.565,634 545.562,927	18	395.595,141 545.562,525	29.518	18	395.595,141 545.562,525	19	395.634,071 545.560,796	38.968

Punct început	X / Y	Punct sfârșit	X / Y	Lungime segment	Punct început	X / Y	Punct sfârșit	X / Y	Lungime segment	Punct început	X / Y	Punct sfârșit	X / Y	Lungime segment
19	395.634,071 545.560,796	20	395.642,74 545.560,411	8.678	20	395.642,74 545.560,411	21	395.656,086 545.560,166	13.348	21	395.656,086 545.560,166	22	395.673,66 545.559,842	17.577
22	395.673,66 545.559,842	23	395.691,077 545.557,942	17.52	23	395.691,077 545.557,942	24	395.703,655 545.555,833	12.754	24	395.703,655 545.555,833	25	395.707,984 545.555,736	4.33
25	395.707,984 545.555,736	26	395.711,8 545.555,65	3.817	26	395.711,8 545.555,65	27	395.719,934 545.557,415	8.323	27	395.719,934 545.557,415	28	395.725,122 545.559,504	5.593
28	395.725,122 545.559,504	29	395.727,038 545.564,587	5.432	29	395.727,038 545.564,587	30	395.721,109 545.562,2	6.391	30	395.721,109 545.562,2	31	395.718,755 545.561,252	2.538
31	395.718,755 545.561,252	32	395.711,416 545.559,659	7.51	32	395.711,416 545.559,659	33	395.707,779 545.559,741	3.638	33	395.707,779 545.559,741	34	395.704,032 545.559,826	3.748
34	395.704,032 545.559,826	35	395.691,625 545.561,906	12.58	35	395.691,625 545.561,906	36	395.673,914 545.563,838	17.816	36	395.673,914 545.563,838	37	395.656,491 545.564,159	17.426
37	395.656,491 545.564,159	38	395.642,88 545.564,409	13.613	38	395.642,88 545.564,409	39	395.634,431 545.564,785	8.457	39	395.634,431 545.564,785	40	395.595,375 545.566,522	39.095
40	395.595,375 545.566,522	41	395.565,577 545.566,928	29.801	41	395.565,577 545.566,928	42	395.527,297 545.566,473	38.283	42	395.527,297 545.566,473	43	395.459,185 545.558,373	68.592
43	395.459,185 545.558,373	44	395.440,327 545.555,307	19.106	44	395.440,327 545.555,307	45	395.350,338 545.539,78	91.319	45	395.350,338 545.539,78	46	395.294,822 545.536,762	55.598
46	395.294,822 545.536,762	47	395.274,478 545.531,645	20.978	47	395.274,478 545.531,645	48	395.240,042 545.522,151	35.721	48	395.240,042 545.522,151	49	395.195,074 545.515,106	45.517
49	395.195,074 545.515,106	50	395.171,587 545.515,374	23.489	50	395.171,587 545.515,374	51	395.145,435 545.517,977	26.281	51	395.145,435 545.517,977	52	395.113,997 545.525,892	32.419
52	395.113,997 545.525,892	53	395.084,961 545.536,772	31.007	53	395.084,961 545.536,772	1	395.047,704 545.558,239	42.999					

** Lungimile segmentelor sunt determinate în planul de proiecție Stereo 70 și sunt rotunjite la 1 milimetru.

*** Distanța dintre puncte este formată din segmente cumulate ce sunt mai mici decât valoarea 1 milimetru.

**DATE DESPRE IMOBILUL NR. 7095**

Oficiul de Cadastru și Publicitate Imobiliară ALBA
Biroul de Cadastru și Publicitate Imobiliară Aiud

A. Partea I. Descrierea imobilului

TEREN Extravilan

Adresa: Jud. Alba

Nr. Crt	Nr cadastral Nr. topografic	Suprafața* (mp)	Observații / Referințe
A1		119.028	Sector cadastral:7 Teren neimprejmuit;

B. Partea II. Proprietari și acte

Inscrieri privitoare la dreptul de proprietate și alte drepturi reale		Referințe
1 / 01/01/2023		
Act Normativ nr. 7, din 13/03/1996 emis de PARLAMENT;		
B1	Inscrierea provizorie, drept de PROPRIETATE, dobandit prin Lege, cota actuala 1/1 1) UAT MIRASLĂU, CIF:9999999999999	A1

C. Partea III. SARCINI .

Inscrieri privind dezmembramintele dreptului de proprietate, drepturi reale de garanție și sarcini	Referințe
NU SUNT	

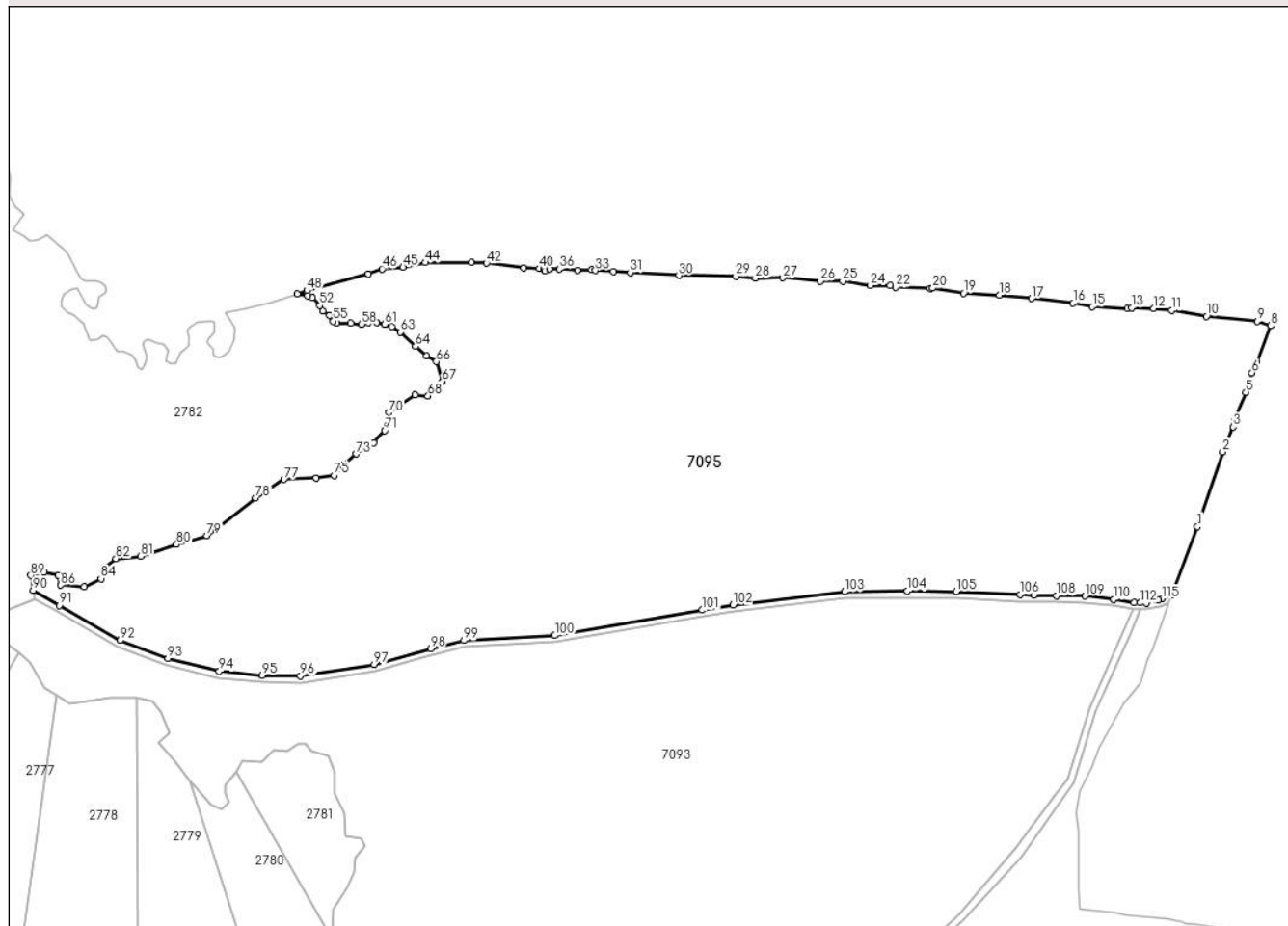
Anexa Nr. 1 La Partea I

Teren

Nr cadastral	Suprafața (mp)*	Observații / Referințe
	119.028	

* Suprafața este determinată în planul de proiecție Stereo 70.

DETALII LINIARE IMOBIL



Date referitoare la teren

Crt	Categorie folosință	Intravilan	Suprafața (mp)	Tarla	Parcelă	Nr. topo	Observații / Referințe
1	faneata	NU	119.028	-	-	-	

Lungime Segmente

1) Valorile lungimilor segmentelor sunt obținute din proiecție în plan.

Punct început	X / Y	Punct sfârșit	X / Y	Lungime segment
1	395.742,71 545.606,18	2	395.758,13 545.651,88	48.231
4	395.765,27 545.670,7	5	395.772,2 545.688,26	18.878
7	395.778,92 545.706,23	8	395.787,42 545.728,79	24.108
10	395.748,18 545.734,63	11	395.727,0 545.738,16	21.472
13	395.702,41 545.739,8	14	395.699,86 545.739,18	2.624
16	395.666,8 545.742,58	17	395.641,38 545.745,5	25.587
2	395.758,13 545.651,88	3	395.764,61 545.667,1	16.542
5	395.772,2 545.688,26	6	395.775,9 545.700,1	12.405
8	395.787,42 545.728,79	9	395.779,11 545.731,46	8.728
11	395.727,0 545.738,16	12	395.715,98 545.739,29	11.078
14	395.699,86 545.739,18	15	395.678,66 545.740,38	21.234
17	395.641,38 545.745,5	18	395.621,88 545.747,53	19.605
3	395.764,61 545.667,1	4	395.765,27 545.670,7	3.66
6	395.775,9 545.700,1	7	395.778,92 545.706,23	6.834
9	395.779,11 545.731,46	10	395.748,18 545.734,63	31.092
12	395.715,98 545.739,29	13	395.702,41 545.739,8	13.58
15	395.678,66 545.740,38	16	395.666,8 545.742,58	12.062
18	395.621,88 545.747,53	19	395.599,84 545.748,74	22.073

Punct început	X / Y	Punct sfârșit	X / Y	Lungime segment	Punct început	X / Y	Punct sfârșit	X / Y	Lungime segment	Punct început	X / Y	Punct sfârșit	X / Y	Lungime segment
19	395.599,84 545.748,74	20	395.581,2 545.751,83	18.894	20	395.581,2 545.751,83	21	395.579,5 545.751,41	1.751	21	395.579,5 545.751,41	22	395.558,3 545.752,4	21.223
22	395.558,3 545.752,4	23	395.554,91 545.753,27	3.5	23	395.554,91 545.753,27	24	395.543,04 545.753,35	11.87	24	395.543,04 545.753,35	25	395.526,09 545.756,0	17.156
25	395.526,09 545.756,0	26	395.512,52 545.756,09	13.57	26	395.512,52 545.756,09	27	395.489,63 545.758,14	22.982	27	395.489,63 545.758,14	28	395.472,66 545.757,83	16.973
28	395.472,66 545.757,83	29	395.460,8 545.758,97	11.915	29	395.460,8 545.758,97	30	395.426,02 545.759,62	34.786	30	395.426,02 545.759,62	31	395.396,34 545.761,32	29.729
31	395.396,34 545.761,32	32	395.386,14 545.761,97	10.221	32	395.386,14 545.761,97	33	395.375,15 545.762,49	11.002	33	395.375,15 545.762,49	34	395.372,61 545.763,14	2.622
34	395.372,61 545.763,14	35	395.364,12 545.762,77	8.498	35	395.364,12 545.762,77	36	395.353,1 545.763,48	11.043	36	395.353,1 545.763,48	37	395.347,16 545.763,52	5.94
37	395.347,16 545.763,52	38	395.344,18 545.762,27	3.232	38	395.344,18 545.762,27	39	395.343,34 545.763,33	1.352	39	395.343,34 545.763,33	40	395.340,8 545.763,77	2.578
40	395.340,8 545.763,77	41	395.331,47 545.764,05	9.334	41	395.331,47 545.764,05	42	395.308,59 545.766,95	23.063	42	395.308,59 545.766,95	43	395.299,26 545.767,43	9.342
43	395.299,26 545.767,43	44	395.271,27 545.767,4	27.99	44	395.271,27 545.767,4	45	395.257,68 545.764,52	13.892	45	395.257,68 545.764,52	46	395.244,94 545.763,55	12.777
46	395.244,94 545.763,55	47	395.236,44 545.760,42	9.058	47	395.236,44 545.760,42	48	395.199,03 545.750,27	38.762	48	395.199,03 545.750,27	49	395.192,907 545.748,257	6.445
49	395.192,907 545.748,257	50	395.199,506 545.747,236	6.678	50	395.199,506 545.747,236	51	395.202,331 545.746,054	3.062	51	395.202,331 545.746,054	52	395.206,971 545.741,185	6.726
52	395.206,971 545.741,185	53	395.208,828 545.737,824	3.84	53	395.208,828 545.737,824	54	395.212,772 545.735,158	4.761	54	395.212,772 545.735,158	55	395.215,041 545.731,629	4.195
55	395.215,041 545.731,629	56	395.217,341 545.730,327	2.643	56	395.217,341 545.730,327	57	395.225,776 545.730,327	8.435	57	395.225,776 545.730,327	58	395.232,222 545.729,837	6.465
58	395.232,222 545.729,837	59	395.236,508 545.730,926	4.422	59	395.236,508 545.730,926	60	395.241,521 545.730,926	5.013	60	395.241,521 545.730,926	61	395.246,606 545.729,764	5.216
61	395.246,606 545.729,764	62	395.250,747 545.728,167	4.438	62	395.250,747 545.728,167	63	395.256,069 545.725,008	6.189	63	395.256,069 545.725,008	64	395.265,223 545.716,152	12.737
64	395.265,223 545.716,152	65	395.271,979 545.710,346	8.908	65	395.271,979 545.710,346	66	395.278,027 545.706,98	6.922	66	395.278,027 545.706,98	67	395.281,652 545.694,956	12.559
67	395.281,652 545.694,956	68	395.272,921 545.685,93	12.558	68	395.272,921 545.685,93	69	395.265,068 545.686,693	7.89	69	395.265,068 545.686,693	70	395.248,874 545.675,796	19.519
70	395.248,874 545.675,796	71	395.246,505 545.664,92	11.131	71	395.246,505 545.664,92	72	395.239,949 545.657,478	9.918	72	395.239,949 545.657,478	73	395.229,161 545.650,627	12.78
73	395.229,161 545.650,627	74	395.222,324 545.644,772	9.001	74	395.222,324 545.644,772	75	395.215,538 545.637,554	9.907	75	395.215,538 545.637,554	76	395.204,605 545.635,78	11.076
76	395.204,605 545.635,78	77	395.184,938 545.635,008	19.682	77	395.184,938 545.635,008	78	395.167,645 545.623,754	20.633	78	395.167,645 545.623,754	79	395.138,017 545.600,782	37.49
79	395.138,017 545.600,782	80	395.119,465 545.595,343	19.333	80	395.119,465 545.595,343	81	395.097,627 545.588,261	22.958	81	395.097,627 545.588,261	82	395.082,392 545.586,663	15.319
82	395.082,392 545.586,663	83	395.075,241 545.581,108	9.055	83	395.075,241 545.581,108	84	395.073,246 545.574,508	6.895	84	395.073,246 545.574,508	85	395.062,995 545.569,557	11.384
85	395.062,995 545.569,557	86	395.048,742 545.570,586	14.29	86	395.048,742 545.570,586	87	395.047,272 545.576,772	6.358	87	395.047,272 545.576,772	88	395.038,403 545.578,547	9.045
88	395.038,403 545.578,547	89	395.030,42 545.576,502	8.241	89	395.030,42 545.576,502	90	395.031,752 545.567,321	9.277	90	395.031,752 545.567,321	91	395.047,704 545.558,239	18.356
91	395.047,704 545.558,239	92	395.084,961 545.536,772	42.999	92	395.084,961 545.536,772	93	395.113,997 545.525,892	31.007	93	395.113,997 545.525,892	94	395.145,435 545.517,977	32.419
94	395.145,435 545.517,977	95	395.171,587 545.515,374	26.281	95	395.171,587 545.515,374	96	395.195,074 545.515,106	23.489	96	395.195,074 545.515,106	97	395.240,042 545.522,151	45.517
97	395.240,042 545.522,151	98	395.274,478 545.531,645	35.721	98	395.274,478 545.531,645	99	395.294,822 545.536,762	20.978	99	395.294,822 545.536,762	100	395.350,338 545.539,78	55.598
100	395.350,338 545.539,78	101	395.440,327 545.555,307	91.319	101	395.440,327 545.555,307	102	395.459,185 545.558,373	19.106	102	395.459,185 545.558,373	103	395.527,297 545.566,473	68.592
103	395.527,297 545.566,473	104	395.565,577 545.566,928	38.283	104	395.565,577 545.566,928	105	395.595,375 545.566,522	29.801	105	395.595,375 545.566,522	106	395.634,431 545.564,785	39.095
106	395.634,431 545.564,785	107	395.642,88 545.564,409	8.457	107	395.642,88 545.564,409	108	395.656,491 545.564,159	13.613	108	395.656,491 545.564,159	109	395.673,914 545.563,838	17.426
109	395.673,914 545.563,838	110	395.691,625 545.561,906	17.816	110	395.691,625 545.561,906	111	395.704,032 545.559,826	12.58	111	395.704,032 545.559,826	112	395.707,779 545.559,741	3.748
112	395.707,779 545.559,741	113	395.711,416 545.559,659	3.638	113	395.711,416 545.559,659	114	395.718,755 545.561,252	7.51	114	395.718,755 545.561,252	115	395.721,109 545.562,2	2.538
115	395.721,109 545.562,2	116	395.727,038 545.564,587	6.391	116	395.727,038 545.564,587	1	395.742,71 545.606,18	44.448					

**** Lungimile segmentelor sunt determinate în planul de proiecție Stereo 70 și sunt rotunjite la 1 milimetru.**

***** Distanța dintre puncte este formată din segmente cumulate ce sunt mai mici decât valoarea 1 milimetru.**

**DATE DESPRE IMOBILUL NR. 7096**

Oficiul de Cadastru și Publicitate Imobiliară ALBA
Biroul de Cadastru și Publicitate Imobiliară Aiud

A. Partea I. Descrierea imobilului

TEREN Extravilan

Adresa: Jud. Alba

Nr. Crt	Nr cadastral Nr. topografic	Suprafața* (mp)	Observații / Referințe
A1		17.011	Sector cadastral:7 Teren neimprejmuit;

B. Partea II. Proprietari și acte

Inscrieri privitoare la dreptul de proprietate și alte drepturi reale		Referințe
1 / 01/01/2023		
Act Normativ nr. 7, din 13/03/1996 emis de PARLAMENT;		
B1	Inscrierea provizorie, drept de PROPRIETATE, dobandit prin Lege, cota actuala 1/1 1) UAT MIRASLĂU, CIF:9999999999999	A1

C. Partea III. SARCINI .

Inscrieri privind dezmembramintele dreptului de proprietate, drepturi reale de garanție și sarcini	Referințe
NU SUNT	

Punct început	X / Y	Punct sfârșit	X / Y	Lungime segment	Punct început	X / Y	Punct sfârșit	X / Y	Lungime segment	Punct început	X / Y	Punct sfârșit	X / Y	Lungime segment
19	394.371,455 545.334,272	20	394.368,389 545.326,161	8.671	20	394.368,389 545.326,161	21	394.362,172 545.317,904	10.336	21	394.362,172 545.317,904	22	394.358,134 545.318,537	4.087
22	394.358,134 545.318,537	23	394.354,758 545.314,166	5.523	23	394.354,758 545.314,166	24	394.353,797 545.312,922	1.572	24	394.353,797 545.312,922	25	394.352,156 545.306,166	6.952
25	394.352,156 545.306,166	26	394.347,076 545.299,436	8.432	26	394.347,076 545.299,436	27	394.321,941 545.269,378	39.182	27	394.321,941 545.269,378	28	394.317,632 545.246,267	23.509
28	394.317,632 545.246,267	29	394.324,866 545.220,311	26.945	29	394.324,866 545.220,311	30	394.324,902 545.202,329	17.982	30	394.324,902 545.202,329	31	394.314,857 545.159,901	43.601
31	394.314,857 545.159,901	32	394.311,575 545.113,622	46.395	32	394.311,575 545.113,622	33	394.318,055 545.094,385	20.299	33	394.318,055 545.094,385	34	394.319,212 545.080,287	14.145
34	394.319,212 545.080,287	35	394.313,988 545.060,433	20.53	35	394.313,988 545.060,433	36	394.298,479 545.048,497	19.57	36	394.298,479 545.048,497	37	394.308,171 545.048,341	9.693
37	394.308,171 545.048,341	38	394.319,588 545.055,796	13.635	38	394.319,588 545.055,796	39	394.324,14 545.081,575	26.178	39	394.324,14 545.081,575	40	394.321,548 545.099,832	18.44
40	394.321,548 545.099,832	41	394.319,517 545.110,326	10.689	41	394.319,517 545.110,326	42	394.319,109 545.126,072	15.751	42	394.319,109 545.126,072	43	394.321,931 545.154,982	29.047
43	394.321,931 545.154,982	44	394.324,88 545.174,842	20.078	44	394.324,88 545.174,842	45	394.330,073 545.202,549	28.189	45	394.330,073 545.202,549	46	394.331,893 545.222,575	20.109
46	394.331,893 545.222,575	47	394.329,591 545.235,8	13.424	47	394.329,591 545.235,8	48	394.326,784 545.249,89	14.367	48	394.326,784 545.249,89	49	394.334,361 545.267,349	19.032
49	394.334,361 545.267,349	50	394.350,45 545.285,537	24.283	50	394.350,45 545.285,537	51	394.368,959 545.308,765	29.701	51	394.368,959 545.308,765	52	394.392,954 545.335,826	36.167
52	394.392,954 545.335,826	53	394.392,918 545.340,141	4.315	53	394.392,918 545.340,141	54	394.392,829 545.350,662	10.521	54	394.392,829 545.350,662	55	394.398,413 545.366,766	17.045
55	394.398,413 545.366,766	56	394.409,712 545.386,097	22.391	56	394.409,712 545.386,097	57	394.413,773 545.401,567	15.994	57	394.413,773 545.401,567	58	394.417,33 545.420,247	19.016
58	394.417,33 545.420,247	59	394.424,69 545.428,616	11.145	59	394.424,69 545.428,616	60	394.430,02 545.437,619	10.462	60	394.430,02 545.437,619	61	394.432,812 545.448,018	10.767
61	394.432,812 545.448,018	62	394.431,03 545.458,851	10.979	62	394.431,03 545.458,851	63	394.428,744 545.465,825	7.339	63	394.428,744 545.465,825	64	394.423,289 545.473,561	9.466
64	394.423,289 545.473,561	65	394.418,34 545.481,676	9.505	65	394.418,34 545.481,676	66	394.414,657 545.494,609	13.447	66	394.414,657 545.494,609	67	394.414,404 545.505,388	10.782
67	394.414,404 545.505,388	68	394.417,324 545.513,725	8.834	68	394.417,324 545.513,725	69	394.422,02 545.520,953	8.62	69	394.422,02 545.520,953	70	394.423,924 545.528,688	7.966
70	394.423,924 545.528,688	71	394.421,51 545.534,901	6.665	71	394.421,51 545.534,901	72	394.416,561 545.541,115	7.944	72	394.416,561 545.541,115	73	394.413,391 545.547,454	7.087
73	394.413,391 545.547,454	74	394.415,798 545.574,277	26.931	74	394.415,798 545.574,277	75	394.416,943 545.590,127	15.891	75	394.416,943 545.590,127	76	394.416,689 545.606,611	16.486
76	394.416,689 545.606,611	77	394.413,135 545.622,462	16.245	77	394.413,135 545.622,462	78	394.406,051 545.642,135	20.91	78	394.406,051 545.642,135	79	394.407,692 545.661,909	19.842
79	394.407,692 545.661,909	80	394.403,907 545.675,604	14.208	80	394.403,907 545.675,604	81	394.394,329 545.684,671	13.189	81	394.394,329 545.684,671	82	394.382,479 545.697,015	17.111
82	394.382,479 545.697,015	83	394.376,178 545.708,727	13.299	83	394.376,178 545.708,727	84	394.369,748 545.726,486	18.887	84	394.369,748 545.726,486	85	394.367,86 545.747,739	21.337
85	394.367,86 545.747,739	86	394.368,87 545.756,051	8.373	86	394.368,87 545.756,051	87	394.370,886 545.778,344	22.384	87	394.370,886 545.778,344	88	394.370,508 545.789,302	10.965
88	394.370,508 545.789,302	89	394.363,175 545.815,534	27.238	89	394.363,175 545.815,534	90	394.360,93 545.866,518	51.033	90	394.360,93 545.866,518	91	394.359,331 545.884,442	17.995
91	394.359,331 545.884,442	92	394.355,484 545.905,887	21.787	92	394.355,484 545.905,887	93	394.342,952 545.923,65	21.739	93	394.342,952 545.923,65	94	394.331,419 545.932,611	14.605
94	394.331,419 545.932,611	95	394.315,723 545.936,132	16.086	95	394.315,723 545.936,132	1	394.309,96 545.941,573	7.926					

** Lungimile segmentelor sunt determinate în planul de proiecție Stereo 70 și sunt rotunjite la 1 milimetru.

*** Distanța dintre puncte este formată din segmente cumulate ce sunt mai mici decât valoarea 1 milimetru.

**DATE DESPRE IMOBILUL NR. 7097**

Oficiul de Cadastru și Publicitate Imobiliară ALBA
Biroul de Cadastru și Publicitate Imobiliară Aiud

A. Partea I. Descrierea imobilului

TEREN Extravilan

Adresa: Jud. Alba

Nr. Crt	Nr cadastral Nr. topografic	Suprafața* (mp)	Observații / Referințe
A1		88.889	Sector cadastral:7 Teren neimprejmuit;

B. Partea II. Proprietari și acte

Inscrieri privitoare la dreptul de proprietate și alte drepturi reale		Referințe
1 / 01/01/2023		
Act Normativ nr. 7, din 13/03/1996 emis de PARLAMENT;		
B1	Inscrierea provizorie, drept de PROPRIETATE, dobandit prin Lege, cota actuala 1/1 1) UAT MIRASLĂU, CIF:9999999999999	A1

C. Partea III. SARCINI .

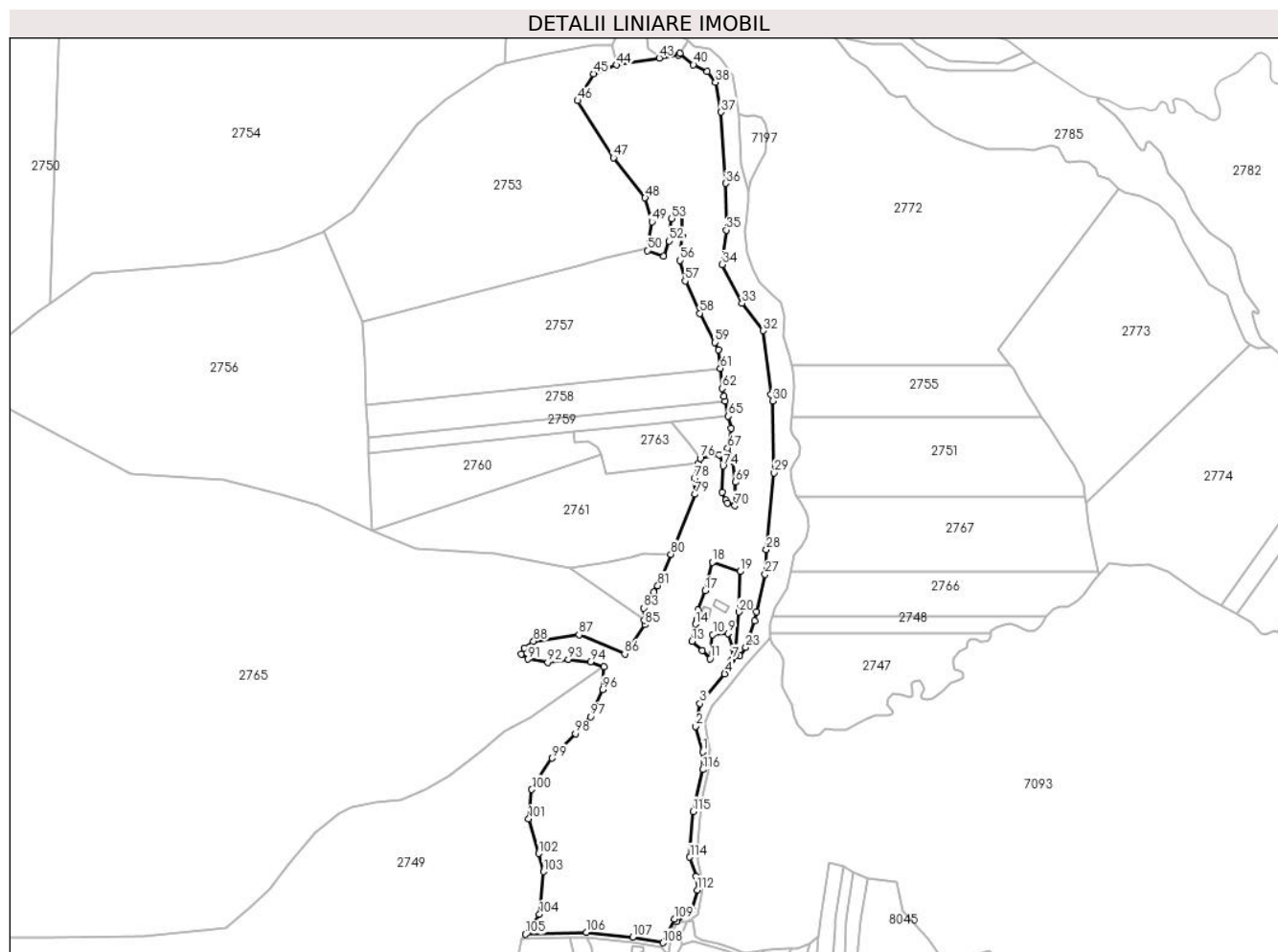
Inscrieri privind dezmembramintele dreptului de proprietate, drepturi reale de garanție și sarcini	Referințe
NU SUNT	

Anexa Nr. 1 La Partea I

Teren

Nr cadastral	Suprafața (mp)*	Observații / Referințe
	88.889	

* Suprafața este determinată în planul de proiecție Stereo 70.



Date referitoare la teren

Crt	Categorie folosință	Intravilan	Suprafața (mp)	Tarla	Parcelă	Nr. topo	Observații / Referințe
1	faneata	NU	88.889	-	-	-	

Lungime Segmente

1) Valorile lungimilor segmentelor sunt obținute din proiecție în plan.

Punct început	X / Y	Punct sfârșit	X / Y	Lungime segment	Punct început	X / Y	Punct sfârșit	X / Y	Lungime segment	Punct început	X / Y	Punct sfârșit	X / Y	Lungime segment
1	394.324,866 545.220,311	2	394.317,632 545.246,267	26.945	2	394.317,632 545.246,267	3	394.321,941 545.269,378	23.509	3	394.321,941 545.269,378	4	394.347,076 545.299,436	39.182
4	394.347,076 545.299,436	5	394.352,156 545.306,166	8.432	5	394.352,156 545.306,166	6	394.353,797 545.312,922	6.952	6	394.353,797 545.312,922	7	394.354,758 545.314,166	1.572
7	394.354,758 545.314,166	8	394.355,704 545.325,471	11.345	8	394.355,704 545.325,471	9	394.350,54 545.340,202	15.61	9	394.350,54 545.340,202	10	394.334,873 545.339,229	15.697
10	394.334,873 545.339,229	11	394.332,016 545.314,794	24.601	11	394.332,016 545.314,794	12	394.324,024 545.322,944	11.415	12	394.324,024 545.322,944	13	394.313,931 545.332,308	13.768
13	394.313,931 545.332,308	14	394.317,578 545.349,846	17.913	14	394.317,578 545.349,846	15	394.318,482 545.354,194	4.441	15	394.318,482 545.354,194	16	394.320,139 545.364,175	10.118
16	394.320,139 545.364,175	17	394.327,039 545.384,048	21.037	17	394.327,039 545.384,048	18	394.334,517 545.412,437	29.357	18	394.334,517 545.412,437	19	394.362,496 545.403,152	29.479

Punct început	X / Y	Punct sfârșit	X / Y	Lungime segment	Punct început	X / Y	Punct sfârșit	X / Y	Lungime segment	Punct început	X / Y	Punct sfârșit	X / Y	Lungime segment
19	394.362,496 545.403,152	20	394.361,411 545.362,124	41.04 2	20	394.361,411 545.362,124	21	394.358,134 545.318,537	43.71	21	394.358,134 545.318,537	22	394.362,172 545.317,904	4.087
22	394.362,172 545.317,904	23	394.368,389 545.326,161	10.33 6	23	394.368,389 545.326,161	24	394.371,455 545.334,272	8.671	24	394.371,455 545.334,272	25	394.377,678 545.353,253	19.97 5
25	394.377,678 545.353,253	26	394.379,024 545.362,459	9.304	26	394.379,024 545.362,459	27	394.388,169 545.400,29	38.92 1	27	394.388,169 545.400,29	28	394.389,398 545.425,284	25.02 4
28	394.389,398 545.425,284	29	394.397,336 545.503,072	78.19 2	29	394.397,336 545.503,072	30	394.395,749 545.576,097	73.04 2	30	394.395,749 545.576,097	31	394.393,996 545.582,434	6.575
31	394.393,996 545.582,434	32	394.386,098 545.647,4	65.44 4	32	394.386,098 545.647,4	33	394.364,549 545.675,164	35.14 5	33	394.364,549 545.675,164	34	394.344,713 545.714,596	44.14
34	394.344,713 545.714,596	35	394.348,614 545.749,5	35.12 1	35	394.348,614 545.749,5	36	394.348,279 545.796,753	47.25 4	36	394.348,279 545.796,753	37	394.343,439 545.868,949	72.35 8
37	394.343,439 545.868,949	38	394.337,66 545.899,221	30.81 9	38	394.337,66 545.899,221	39	394.329,382 545.910,019	13.60 6	39	394.329,382 545.910,019	40	394.315,282 545.917,177	15.81 3
40	394.315,282 545.917,177	41	394.301,659 545.928,731	17.86 3	41	394.301,659 545.928,731	42	394.300,498 545.926,935	2.139	42	394.300,498 545.926,935	43	394.280,533 545.923,766	20.21 5
43	394.280,533 545.923,766	44	394.237,031 545.916,86	44.04 7	44	394.237,031 545.916,86	45	394.213,991 545.907,936	24.70 8	45	394.213,991 545.907,936	46	394.197,796 545.880,63	31.74 7
46	394.197,796 545.880,63	47	394.234,128 545.822,755	68.33 4	47	394.234,128 545.822,755	48	394.266,384 545.782,147	51.86	48	394.266,384 545.782,147	49	394.273,266 545.757,712	25.38 6
49	394.273,266 545.757,712	50	394.268,5 545.728,66	29.44	50	394.268,5 545.728,66	51	394.285,186 545.722,676	17.72 7	51	394.285,186 545.722,676	52	394.290,77 545.738,293	16.58 5
52	394.290,77 545.738,293	53	394.293,288 545.761,117	22.96 2	53	394.293,288 545.761,117	54	394.303,361 545.768,756	12.64 2	54	394.303,361 545.768,756	55	394.304,167 545.743,076	25.69 3
55	394.304,167 545.743,076	56	394.301,797 545.718,532	24.65 8	56	394.301,797 545.718,532	57	394.306,811 545.697,816	21.31 4	57	394.306,811 545.697,816	58	394.321,622 545.665,047	35.96 1
58	394.321,622 545.665,047	59	394.336,885 545.635,525	33.23 4	59	394.336,885 545.635,525	60	394.340,762 545.628,026	8.442	60	394.340,762 545.628,026	61	394.342,531 545.609,032	19.07 6
61	394.342,531 545.609,032	62	394.344,404 545.588,922	20.19 7	62	394.344,404 545.588,922	63	394.346,17 545.580,946	8.169	63	394.346,17 545.580,946	64	394.347,259 545.576,024	5.041
64	394.347,259 545.576,024	65	394.350,644 545.560,732	15.66 2	65	394.350,644 545.560,732	66	394.353,336 545.548,573	12.45 3	66	394.353,336 545.548,573	67	394.349,998 545.528,385	20.46 2
67	394.349,998 545.528,385	68	394.355,252 545.515,362	14.04 3	68	394.355,252 545.515,362	69	394.358,011 545.493,776	21.76 2	69	394.358,011 545.493,776	70	394.357,186 545.469,804	23.98 6
70	394.357,186 545.469,804	71	394.349,69 545.472,693	8.033	71	394.349,69 545.472,693	72	394.348,262 545.475,546	3.19	72	394.348,262 545.475,546	73	394.344,2 545.483,664	9.078
73	394.344,2 545.483,664	74	394.345,439 545.510,205	26.57	74	394.345,439 545.510,205	75	394.341,465 545.521,324	11.80 8	75	394.341,465 545.521,324	76	394.322,24 545.517,916	19.52 5
76	394.322,24 545.517,916	77	394.320,75 545.512,866	5.265	77	394.320,75 545.512,866	78	394.316,256 545.497,642	15.87 3	78	394.316,256 545.497,642	79	394.316,889 545.481,511	16.14 3
79	394.316,889 545.481,511	80	394.292,482 545.420,725	65.50 3	80	394.292,482 545.420,725	81	394.279,114 545.388,925	34.49 6	81	394.279,114 545.388,925	82	394.275,002 545.382,429	7.688
82	394.275,002 545.382,429	83	394.264,72 545.366,183	19.22 6	83	394.264,72 545.366,183	84	394.265,608 545.353,533	12.68 1	84	394.265,608 545.353,533	85	394.265,911 545.349,225	4.319
85	394.265,911 545.349,225	86	394.245,662 545.319,771	35.74 3	86	394.245,662 545.319,771	87	394.199,242 545.339,015	50.25 1	87	394.199,242 545.339,015	88	394.153,104 545.332,616	46.58
88	394.153,104 545.332,616	89	394.143,628 545.325,415	11.90 2	89	394.143,628 545.325,415	90	394.140,349 545.319,31	6.93	90	394.140,349 545.319,31	91	394.147,584 545.314,347	8.774
91	394.147,584 545.314,347	92	394.167,364 545.311,185	20.03 1	92	394.167,364 545.311,185	93	394.188,433 545.314,09	21.26 8	93	394.188,433 545.314,09	94	394.210,722 545.311,484	22.44 1
94	394.210,722 545.311,484	95	394.224,543 545.306,491	14.69 5	95	394.224,543 545.306,491	96	394.223,289 545.283,406	23.11 9	96	394.223,289 545.283,406	97	394.210,718 545.255,909	30.23 4
97	394.210,718 545.255,909	98	394.195,428 545.238,885	22.88 2	98	394.195,428 545.238,885	99	394.171,838 545.214,003	34.28 7	99	394.171,838 545.214,003	100	394.151,305 545.182,135	37.91
100	394.151,305 545.182,135	101	394.148,247 545.152,452	29.84	101	394.148,247 545.152,452	102	394.158,286 545.117,195	36.65 8	102	394.158,286 545.117,195	103	394.163,094 545.098,86	18.95 5
103	394.163,094 545.098,86	104	394.159,161 545.055,644	43.39 5	104	394.159,161 545.055,644	105	394.144,861 545.035,431	24.76	105	394.144,861 545.035,431	106	394.206,875 545.037,412	62.04 6
106	394.206,875 545.037,412	107	394.253,736 545.032,562	47.11 1	107	394.253,736 545.032,562	108	394.284,156 545.026,739	30.97 2	108	394.284,156 545.026,739	109	394.296,166 545.050,855	26.94 1
109	394.296,166 545.050,855	110	394.298,479 545.048,497	3.303	110	394.298,479 545.048,497	111	394.313,988 545.060,433	19.57	111	394.313,988 545.060,433	112	394.319,212 545.080,287	20.53
112	394.319,212 545.080,287	113	394.318,055 545.094,385	14.14 5	113	394.318,055 545.094,385	114	394.311,575 545.113,622	20.29 9	114	394.311,575 545.113,622	115	394.314,857 545.159,901	46.39 5
115	394.314,857 545.159,901	116	394.324,902 545.202,329	43.60 1	116	394.324,902 545.202,329	1	394.324,866 545.220,311	17.98 2					

**** Lungimile segmentelor sunt determinate în planul de proiecție Stereo 70 și sunt rotunjite la 1 milimetru.**

***** Distanța dintre puncte este formată din segmente cumulate ce sunt mai mici decât valoarea 1 milimetru.**

**DATE DESPRE IMOBILUL NR. 7098**

Oficiul de Cadastru și Publicitate Imobiliară ALBA
Biroul de Cadastru și Publicitate Imobiliară Aiud

A. Partea I. Descrierea imobilului

TEREN Extravilan

Adresa: Jud. Alba

Nr. Crt	Nr cadastral Nr. topografic	Suprafața* (mp)	Observații / Referințe
A1		131.461	Sector cadastral:7 Teren neimprejmuit;

B. Partea II. Proprietari și acte

Inscrieri privitoare la dreptul de proprietate și alte drepturi reale		Referințe
1 / 01/01/2023		
Act Normativ nr. 7, din 13/03/1996 emis de PARLAMENT;		
B1	Inscrierea provizorie, drept de PROPRIETATE, dobandit prin Lege, cota actuala 1/1 1) UAT MIRASLĂU, CIF:9999999999999	A1

C. Partea III. SARCINI .

Inscrieri privind dezmembramintele dreptului de proprietate, drepturi reale de garanție și sarcini	Referințe
NU SUNT	

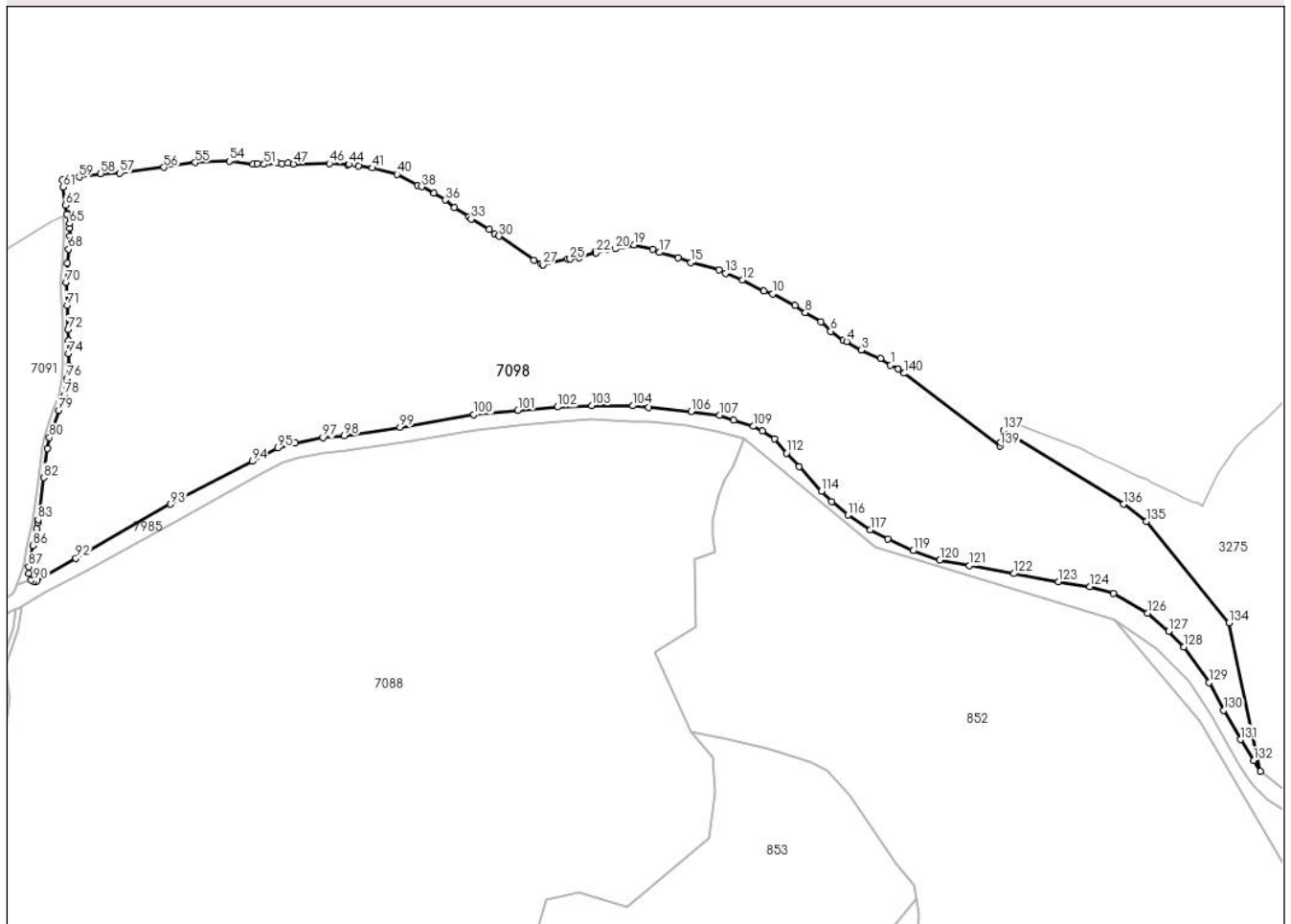
Anexa Nr. 1 La Partea I

Teren

Nr cadastral	Suprafața (mp)*	Observații / Referințe
	131.461	

* Suprafața este determinată în planul de proiecție Stereo 70.

DETALII LINIARE IMOBIL



Date referitoare la teren

Crt	Categorie folosință	Intra vilan	Suprafața (mp)	Tarla	Parcelă	Nr. topo	Observații / Referințe
1	faneata	NU	131.461	-	-	-	

Lungime Segmente

1) Valorile lungimilor segmentelor sunt obținute din proiecție în plan.

Punct început	X / Y	Punct sfârșit	X / Y	Lungime segment
1	396.676,16 545.298,65	2	396.668,56 545.303,79	9.175
4	396.643,21 545.316,46	5	396.640,68 545.317,32	2.672
7	396.623,82 545.331,22	8	396.612,0 545.338,08	13.666
10	396.587,51 545.352,23	11	396.580,74 545.354,18	7.045
13	396.551,91 545.367,69	14	396.546,93 545.370,09	5.528
16	396.516,47 545.379,19	17	396.502,08 545.383,31	14.968
2	396.668,56 545.303,79	3	396.654,19 545.310,03	15.666
5	396.640,68 545.317,32	6	396.631,19 545.324,17	11.704
8	396.612,0 545.338,08	9	396.604,41 545.343,64	9.409
11	396.580,74 545.354,18	12	396.564,69 545.362,55	18.101
14	396.546,93 545.370,09	15	396.525,77 545.375,74	21.901
17	396.502,08 545.383,31	18	396.497,01 545.385,68	5.597
3	396.654,19 545.310,03	4	396.643,21 545.316,46	12.724
6	396.631,19 545.324,17	7	396.623,82 545.331,22	10.199
9	396.604,41 545.343,64	10	396.587,51 545.352,23	18.958
12	396.564,69 545.362,55	13	396.551,91 545.367,69	13.775
15	396.525,77 545.375,74	16	396.516,47 545.379,19	9.919
18	396.497,01 545.385,68	19	396.483,25 545.388,95	14.143

Punct început	X / Y	Punct sfârșit	X / Y	Lungime segment	Punct început	X / Y	Punct sfârșit	X / Y	Lungime segment	Punct început	X / Y	Punct sfârșit	X / Y	Lungime segment
19	396.483,25 545.388,95	20	396.469,02 545.386,07	14.519	20	396.469,02 545.386,07	21	396.462,86 545.385,47	6.189	21	396.462,86 545.385,47	22	396.454,57 545.382,98	8.656
22	396.454,57 545.382,98	23	396.453,51 545.383,41	1.144	23	396.453,51 545.383,41	24	396.441,82 545.379,46	12.339	24	396.441,82 545.379,46	25	396.435,02 545.378,23	6.91
25	396.435,02 545.378,23	26	396.433,11 545.378,46	1.924	26	396.433,11 545.378,46	27	396.414,63 545.374,13	18.98	27	396.414,63 545.374,13	28	396.413,406 545.374,751	1.373
28	396.413,406 545.374,751	29	396.407,87 545.377,56	6.208	29	396.407,87 545.377,56	30	396.381,72 545.395,54	31.735	30	396.381,72 545.395,54	31	396.378,34 545.397,26	3.792
31	396.378,34 545.397,26	32	396.374,12 545.400,68	5.432	32	396.374,12 545.400,68	33	396.360,61 545.408,4	15.56	33	396.360,61 545.408,4	34	396.358,93 545.410,11	2.397
34	396.358,93 545.410,11	35	396.347,96 545.417,17	13.045	35	396.347,96 545.417,17	36	396.341,21 545.422,73	8.745	36	396.341,21 545.422,73	37	396.332,77 545.428,08	9.993
37	396.332,77 545.428,08	38	396.323,48 545.432,81	10.425	38	396.323,48 545.432,81	39	396.320,09 545.433,89	3.558	39	396.320,09 545.433,89	40	396.304,89 545.442,05	17.252
40	396.304,89 545.442,05	41	396.286,26 545.446,83	19.233	41	396.286,26 545.446,83	42	396.275,67 545.448,38	10.703	42	396.275,67 545.448,38	43	396.273,56 545.449,67	2.473
43	396.273,56 545.449,67	44	396.268,47 545.449,7	5.09	44	396.268,47 545.449,7	45	396.267,62 545.449,07	1.058	45	396.267,62 545.449,07	46	396.254,06 545.450,22	13.609
46	396.254,06 545.450,22	47	396.226,91 545.449,76	27.154	47	396.226,91 545.449,76	48	396.222,67 545.450,64	4.33	48	396.222,67 545.450,64	49	396.218,43 545.450,03	4.284
49	396.218,43 545.450,03	50	396.215,04 545.450,68	3.452	50	396.215,04 545.450,68	51	396.204,85 545.449,48	10.26	51	396.204,85 545.449,48	52	396.199,76 545.449,94	5.111
52	396.199,76 545.449,94	53	396.196,37 545.449,53	3.415	53	396.196,37 545.449,53	54	396.178,57 545.451,98	17.968	54	396.178,57 545.451,98	55	396.153,11 545.450,87	25.484
55	396.153,11 545.450,87	56	396.129,35 545.447,34	24.021	56	396.129,35 545.447,34	57	396.096,22 545.442,97	33.417	57	396.096,22 545.442,97	58	396.081,79 545.442,64	14.434
58	396.081,79 545.442,64	59	396.065,65 545.439,99	16.356	59	396.065,65 545.439,99	60	396.053,23 545.437,95	12.586	60	396.053,23 545.437,95	61	396.053,72 545.432,44	5.532
61	396.053,72 545.432,44	62	396.055,52 545.418,86	13.699	62	396.055,52 545.418,86	63	396.056,4 545.412,25	6.668	63	396.056,4 545.412,25	64	396.057,073 545.412,403	0.69
64	396.057,073 545.412,403	65	396.058,447 545.405,081	7.45	65	396.058,447 545.405,081	66	396.058,412 545.401,64	3.441	66	396.058,412 545.401,64	67	396.058,351 545.395,647	5.993
67	396.058,351 545.395,647	68	396.057,634 545.385,799	9.874	68	396.057,634 545.385,799	69	396.056,876 545.375,403	10.424	69	396.056,876 545.375,403	70	396.055,806 545.360,714	14.728
70	396.055,806 545.360,714	71	396.056,536 545.343,563	17.167	71	396.056,536 545.343,563	72	396.057,224 545.325,196	18.38	72	396.057,224 545.325,196	73	396.057,532 545.316,976	8.226
73	396.057,532 545.316,976	74	396.057,532 545.307,191	9.785	74	396.057,532 545.307,191	75	396.057,532 545.298,012	9.179	75	396.057,532 545.298,012	76	396.056,543 545.288,587	9.477
76	396.056,543 545.288,587	77	396.056,304 545.286,303	2.296	77	396.056,304 545.286,303	78	396.054,408 545.276,071	10.406	78	396.054,408 545.276,071	79	396.050,319 545.264,498	12.274
79	396.050,319 545.264,498	80	396.043,31 545.244,14	21.531	80	396.043,31 545.244,14	81	396.041,706 545.236,036	8.261	81	396.041,706 545.236,036	82	396.038,85 545.214,078	22.143
82	396.038,85 545.214,078	83	396.034,756 545.182,604	31.739	83	396.034,756 545.182,604	84	396.034,435 545.180,133	2.492	84	396.034,435 545.180,133	85	396.033,549 545.175,708	4.513
85	396.033,549 545.175,708	86	396.031,014 545.163,043	12.916	86	396.031,014 545.163,043	87	396.027,816 545.147,065	16.295	87	396.027,816 545.147,065	88	396.027,708 545.142,074	4.992
88	396.027,708 545.142,074	89	396.029,428 545.137,156	5.21	89	396.029,428 545.137,156	90	396.031,541 545.136,122	2.352	90	396.031,541 545.136,122	91	396.033,673 545.136,281	2.138
91	396.033,673 545.136,281	92	396.063,11 545.153,538	34.122	92	396.063,11 545.153,538	93	396.134,536 545.193,998	82.089	93	396.134,536 545.193,998	94	396.195,905 545.226,249	69.327
94	396.195,905 545.226,249	95	396.215,025 545.236,245	21.575	95	396.215,025 545.236,245	96	396.228,083 545.240,052	13.602	96	396.228,083 545.240,052	97	396.249,01 545.244,148	21.324
97	396.249,01 545.244,148	98	396.265,096 545.245,556	16.148	98	396.265,096 545.245,556	99	396.307,197 545.251,808	42.563	99	396.307,197 545.251,808	100	396.362,69 545.261,586	56.348
100	396.362,69 545.261,586	101	396.395,83 545.264,686	33.285	101	396.395,83 545.264,686	102	396.425,661 545.267,158	29.933	102	396.425,661 545.267,158	103	396.451,422 545.268,172	25.781
103	396.451,422 545.268,172	104	396.482,354 545.268,054	30.932	104	396.482,354 545.268,054	105	396.494,139 545.266,639	11.87	105	396.494,139 545.266,639	106	396.526,167 545.263,852	32.149
106	396.526,167 545.263,852	107	396.547,59 545.260,868	21.63	107	396.547,59 545.260,868	108	396.558,175 545.257,182	11.208	108	396.558,175 545.257,182	109	396.572,772 545.252,58	15.305
109	396.572,772 545.252,58	110	396.579,726 545.249,253	7.709	110	396.579,726 545.249,253	111	396.588,879 545.243,216	10.965	111	396.588,879 545.243,216	112	396.598,037 545.232,528	14.075
112	396.598,037 545.232,528	113	396.607,438 545.222,402	13.817	113	396.607,438 545.222,402	114	396.624,116 545.203,894	24.914	114	396.624,116 545.203,894	115	396.631,812 545.195,968	11.048
115	396.631,812 545.195,968	116	396.644,291 545.185,953	16.001	116	396.644,291 545.185,953	117	396.660,916 545.174,673	20.091	117	396.660,916 545.174,673	118	396.674,032 545.167,697	14.856

Punct început	X / Y	Punct sfârșit	X / Y	Lungime segment	Punct început	X / Y	Punct sfârșit	X / Y	Lungime segment	Punct început	X / Y	Punct sfârșit	X / Y	Lungime segment
118	396.674,032 545.167,697	119	396.693,15 545.159,05	20.98 3	119	396.693,15 545.159,05	120	396.713,325 545.152,136	21.32 7	120	396.713,325 545.152,136	121	396.735,602 545.148,084	22.64 3
121	396.735,602 545.148,084	122	396.769,147 545.141,903	34.11	122	396.769,147 545.141,903	123	396.802,645 545.135,89	34.03 3	123	396.802,645 545.135,89	124	396.826,086 545.132,155	23.73 7
124	396.826,086 545.132,155	125	396.843,89 545.126,949	18.55	125	396.843,89 545.126,949	126	396.869,525 545.112,293	29.52 9	126	396.869,525 545.112,293	127	396.885,459 545.098,602	21.00 8
127	396.885,459 545.098,602	128	396.897,053 545.086,773	16.56 3	128	396.897,053 545.086,773	129	396.915,727 545.060,067	32.58 7	129	396.915,727 545.060,067	130	396.926,723 545.039,028	23.73 9
130	396.926,723 545.039,028	131	396.939,412 545.017,074	25.35 7	131	396.939,412 545.017,074	132	396.949,378 545.001,366	18.60 3	132	396.949,378 545.001,366	133	396.954,487 544.993,17	9.658
133	396.954,487 544.993,17	134	396.930,834 545.104,916	114.2 22	134	396.930,834 545.104,916	135	396.868,657 545.180,983	98.24 5	135	396.868,657 545.180,983	136	396.851,591 545.194,08	21.51 2
136	396.851,591 545.194,08	137	396.761,12 545.249,57	106.1 33	137	396.761,12 545.249,57	138	396.759,17 545.240,46	9.316	138	396.759,17 545.240,46	139	396.758,61 545.237,83	2.689
139	396.758,61 545.237,83	140	396.686,42 545.292,46	90.53 1	140	396.686,42 545.292,46	141	396.682,07 545.295,64	5.388	141	396.682,07 545.295,64	1	396.676,16 545.298,65	6.632

** Lungimile segmentelor sunt determinate în planul de proiecție Stereo 70 și sunt rotunjite la 1 milimetru.

*** Distanța dintre puncte este formată din segmente cumulate ce sunt mai mici decât valoarea 1 milimetru.

**DATE DESPRE IMOBILUL NR. 7099**

Oficiul de Cadastru și Publicitate Imobiliară ALBA
Biroul de Cadastru și Publicitate Imobiliară Aiud

A. Partea I. Descrierea imobilului

TEREN Extravilan

Adresa: Jud. Alba

Nr. Crt	Nr cadastral Nr. topografic	Suprafața* (mp)	Observații / Referințe
A1		1.158	Sector cadastral:7 Teren neimprejmuit;

B. Partea II. Proprietari și acte

Inscrieri privitoare la dreptul de proprietate și alte drepturi reale		Referințe
1 / 01/01/2023		
Act Normativ nr. 7, din 13/03/1996 emis de PARLAMENT;		
B1	Inscrierea provizorie, drept de PROPRIETATE, dobandit prin Lege, cota actuala 1/1 1) UAT MIRASLĂU, CIF:9999999999999	A1

C. Partea III. SARCINI .

Inscrieri privind dezmembramintele dreptului de proprietate, drepturi reale de garanție și sarcini	Referințe
NU SUNT	

Anexa Nr. 1 La Partea I

Teren

Nr cadastral	Suprafața (mp)*	Observații / Referințe
	1.158	

* Suprafața este determinată în planul de proiecție Stereo 70.



Date referitoare la teren

Crt	Categorie folosință	Intra vilan	Suprafața (mp)	Tarla	Parcelă	Nr. topo	Observații / Referințe
1	drum	NU	1.158	-	-	-	

Lungime Segmente

1) Valorile lungimilor segmentelor sunt obținute din proiecție în plan.

Punct început	X / Y	Punct sfârșit	X / Y	Lungime segment
1	396.027,816 545.147,065	2	396.031,014 545.163,043	16.295
4	396.034,435 545.180,133	5	396.034,756 545.182,604	2.492
7	396.041,706 545.236,036	8	396.043,31 545.244,14	8.261
10	396.054,408 545.276,071	11	396.056,304 545.286,303	10.406
13	396.057,532 545.298,012	14	396.057,532 545.307,191	9.179
16	396.057,224 545.325,196	17	396.056,536 545.343,563	18.38
2	396.031,014 545.163,043	3	396.033,549 545.175,708	12.916
5	396.034,756 545.182,604	6	396.038,85 545.214,078	31.739
8	396.043,31 545.244,14	9	396.050,319 545.264,498	21.531
11	396.056,304 545.286,303	12	396.056,543 545.288,587	2.296
14	396.057,532 545.307,191	15	396.057,532 545.316,976	9.785
17	396.056,536 545.343,563	18	396.055,806 545.360,714	17.167
3	396.033,549 545.175,708	4	396.034,435 545.180,133	4.513
6	396.038,85 545.214,078	7	396.041,706 545.236,036	22.143
9	396.050,319 545.264,498	10	396.054,408 545.276,071	12.274
12	396.056,543 545.288,587	13	396.057,532 545.298,012	9.477
15	396.057,532 545.316,976	16	396.057,224 545.325,196	8.226
18	396.055,806 545.360,714	19	396.056,876 545.375,403	14.728

Punct început	X / Y	Punct sfârșit	X / Y	Lungime segment	Punct început	X / Y	Punct sfârșit	X / Y	Lungime segment	Punct început	X / Y	Punct sfârșit	X / Y	Lungime segment
19	396.056,876 545.375,403	20	396.057,634 545.385,799	10.424	20	396.057,634 545.385,799	21	396.058,351 545.395,647	9.874	21	396.058,351 545.395,647	22	396.058,412 545.401,64	5.993
22	396.058,412 545.401,64	23	396.058,447 545.405,081	3.441	23	396.058,447 545.405,081	24	396.057,073 545.412,403	7.45	24	396.057,073 545.412,403	25	396.056,4 545.412,25	0.69
25	396.056,4 545.412,25	26	396.053,313 545.410,752	3.431	26	396.053,313 545.410,752	27	396.054,444 545.404,834	6.025	27	396.054,444 545.404,834	28	396.054,353 545.395,813	9.021
28	396.054,353 545.395,813	29	396.054,259 545.394,528	1.288	29	396.054,259 545.394,528	30	396.053,438 545.383,258	11.3	30	396.053,438 545.383,258	31	396.053,039 545.377,777	5.496
31	396.053,039 545.377,777	32	396.051,8 545.360,774	17.048	32	396.051,8 545.360,774	33	396.052,411 545.346,404	14.383	33	396.052,411 545.346,404	34	396.052,924 545.333,136	13.278
34	396.052,924 545.333,136	35	396.053,532 545.316,901	16.246	35	396.053,532 545.316,901	36	396.053,532 545.298,221	18.68	36	396.053,532 545.298,221	37	396.052,342 545.286,877	11.406
37	396.052,342 545.286,877	38	396.051,51 545.282,39	4.563	38	396.051,51 545.282,39	39	396.050,518 545.277,036	5.445	39	396.050,518 545.277,036	40	396.045,35 545.262,437	15.487
40	396.045,35 545.262,437	41	396.039,433 545.245,154	18.268	41	396.039,433 545.245,154	42	396.037,754 545.236,67	8.649	42	396.037,754 545.236,67	43	396.034,753 545.213,592	23.272
43	396.034,753 545.213,592	44	396.030,486 545.180,785	33.083	44	396.030,486 545.180,785	45	396.029,101 545.174,009	6.916	45	396.029,101 545.174,009	46	396.026,554 545.161,548	12.719
46	396.026,554 545.161,548	47	396.024,234 545.150,199	11.584	47	396.024,234 545.150,199	48	396.023,114 545.146,685	3.688	48	396.023,114 545.146,685	49	396.018,907 545.133,486	13.853
49	396.018,907 545.133,486	50	396.029,428 545.137,156	11.143	50	396.029,428 545.137,156	51	396.027,708 545.142,074	5.21	51	396.027,708 545.142,074	1	396.027,816 545.147,065	4.992

** Lungimile segmentelor sunt determinate în planul de proiecție Stereo 70 și sunt rotunjite la 1 milimetru.

*** Distanța dintre puncte este formată din segmente cumulate ce sunt mai mici decât valoarea 1 milimetru.

**DATE DESPRE IMOBILUL NR. 7197**

Oficiul de Cadastru și Publicitate Imobiliară ALBA
Biroul de Cadastru și Publicitate Imobiliară Aiud

A. Partea I. Descrierea imobilului

TEREN Extravilan

Adresa: Jud. Alba

Nr. Crt	Nr cadastral Nr. topografic	Suprafața* (mp)	Observații / Referințe
A1		1.498	Sector cadastral:7 Teren neimprejmuit;

B. Partea II. Proprietari și acte

Inscrieri privitoare la dreptul de proprietate și alte drepturi reale		Referințe
1 / 01/01/2023		
Act Normativ nr. 7, din 13/03/1996 emis de PARLAMENT;		
B1	Inscrierea provizorie, drept de PROPRIETATE, dobandit prin Lege, cota actuala 1/1 1) UAT MIRASLĂU, CIF:9999999999999	A1

C. Partea III. SARCINI .

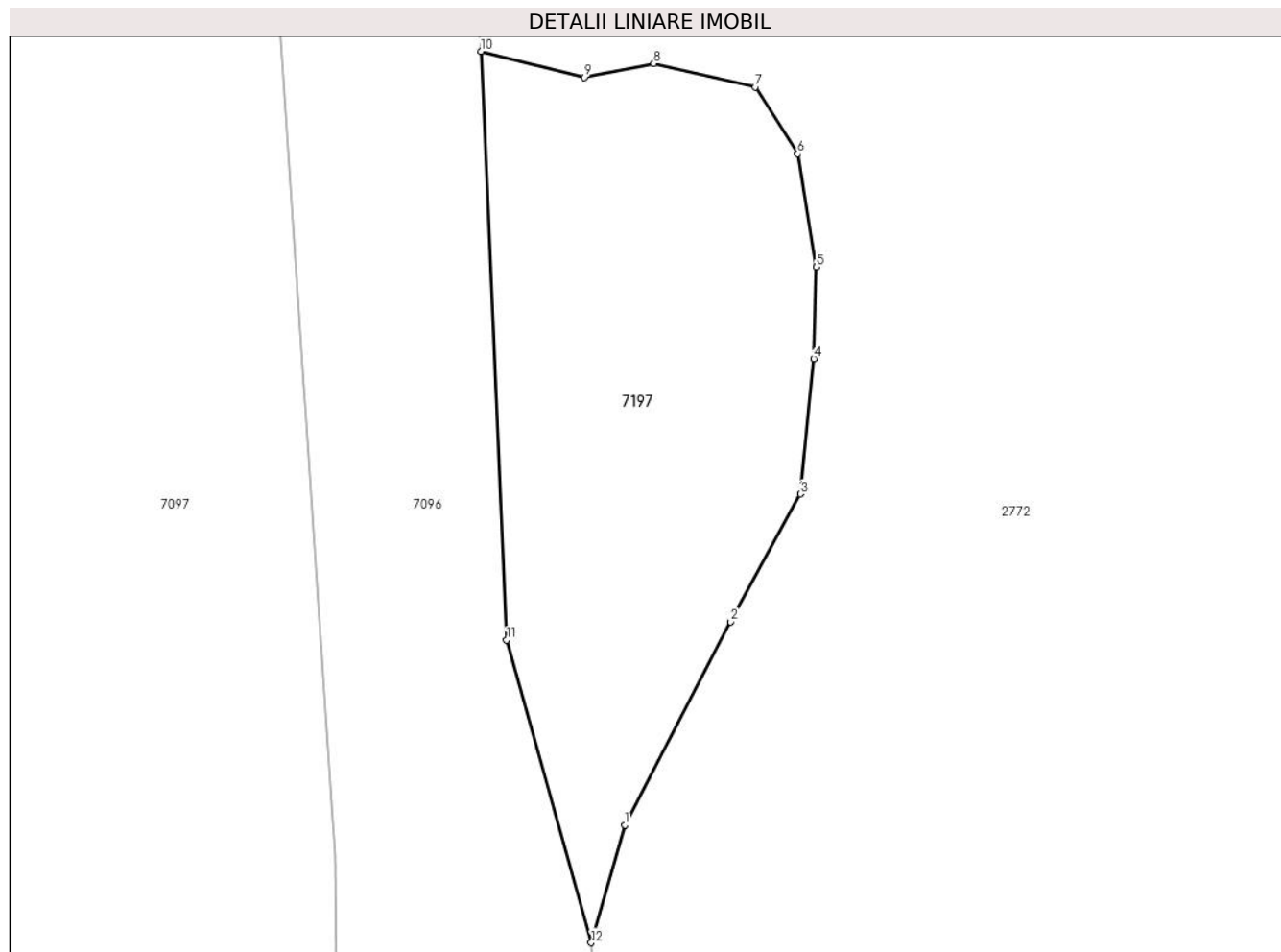
Inscrieri privind dezmembramintele dreptului de proprietate, drepturi reale de garanție și sarcini	Referințe
NU SUNT	

Anexa Nr. 1 La Partea I

Teren

Nr cadastral	Suprafața (mp)*	Observații / Referințe
	1.498	

* Suprafața este determinată în planul de proiecție Stereo 70.



Date referitoare la teren

Crt	Categorie folosință	Intravilan	Suprafața (mp)	Tarla	Parcelă	Nr. topo	Observații / Referințe
1	faneata	NU	1.498	-	-	-	

Lungime Segmente

1) Valorile lungimilor segmentelor sunt obținute din proiecție în plan.

Punct început	X / Y	Punct sfârșit	X / Y	Lungime segment (** (m)
1	394.373,405 545.799,503	2	394.382,614 545.817,093	19.855
2	394.382,614 545.817,093	3	394.388,662 545.828,176	12.626
3	394.388,662 545.828,176	4	394.389,797 545.839,89	11.769
4	394.389,797 545.839,89	5	394.390,05 545.847,825	7.939
5	394.390,05 545.847,825	6	394.388,412 545.857,648	9.959

Punct început	X / Y	Punct sfârșit	X / Y	Lungime segment (** (m)
6	394.388,412 545.857,648	7	394.384,755 545.863,442	6.852
7	394.384,755 545.863,442	8	394.375,934 545.865,458	9.048
8	394.375,934 545.865,458	9	394.369,899 545.864,278	6.149
9	394.369,899 545.864,278	10	394.360,93 545.866,518	9.244
10	394.360,93 545.866,518	11	394.363,175 545.815,534	51.033
11	394.363,175 545.815,534	12	394.370,508 545.789,302	27.238
12	394.370,508 545.789,302	1	394.373,405 545.799,503	10.604

** Lungimile segmentelor sunt determinate în planul de proiecție Stereo 70 și sunt rotunjite la 1 milimetru.

*** Distanța dintre puncte este formată din segmente cumulate ce sunt mai mici decât valoarea 1 milimetru.

