

**DATE DESPRE IMOBILUL NR. 7086**

Oficiul de Cadastru și Publicitate Imobiliară ALBA
Biroul de Cadastru și Publicitate Imobiliară Aiud

A. Partea I. Descrierea imobilului

TEREN Extravilan

Adresa: Jud. Alba

Nr. Crt	Nr cadastral Nr. topografic	Suprafața* (mp)	Observații / Referințe
A1		244.965	Sector cadastral:11 Teren neimprejmuit;

B. Partea II. Proprietari și acte

Inscrieri privitoare la dreptul de proprietate și alte drepturi reale		Referințe
1 / 01/01/2023		
Act Normativ nr. 7, din 13/03/1996 emis de PARLAMENT;		
B1	Inscrierea provizorie, drept de PROPRIETATE, dobandit prin Lege, cota actuala 1/1 1) UAT MIRSLĂU, CIF:9999999999999	A1

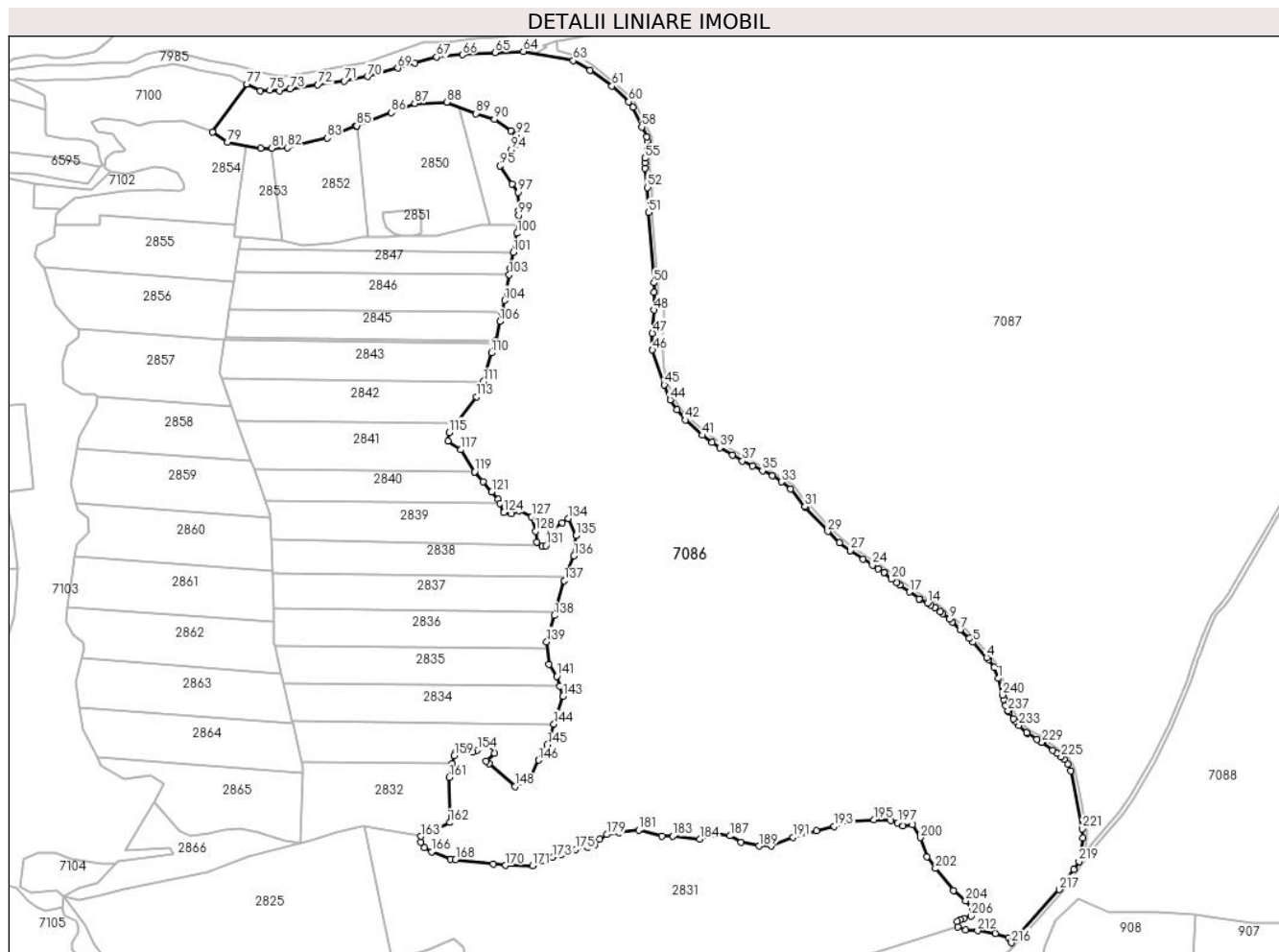
C. Partea III. SARCINI .

Inscrieri privind dezmembramintele dreptului de proprietate, drepturi reale de garanție și sarcini	Referințe
NU SUNT	

Anexa Nr. 1 La Partea I**Teren**

Nr cadastral	Suprafața (mp)*	Observații / Referințe
	244.965	

* Suprafața este determinată în planul de proiecție Stereo 70.

**Date referitoare la teren**

Crt	Categorie folosință	Intravilan	Suprafața (mp)	Tarla	Parcelă	Nr. topo	Observații / Referințe
1	faneata	NU	203.448	-	-	-	
2	livada	NU	21.348	-	-	-	
3	livada	NU	20.169	-	-	-	

Lungime Segmente

1) Valorile lungimilor segmentelor sunt obținute din proiecție în plan.

Punct început	X / Y	Punct sfârșit	X / Y	Lungime segment	Punct început	X / Y	Punct sfârșit	X / Y	Lungime segment	Punct început	X / Y	Punct sfârșit	X / Y	Lungime segment
1	395.513,43 544.358,899	2	395.509,571 544.369,622	11.396	2	395.509,571 544.369,622	3	395.503,952 544.377,435	9.624	3	395.503,952 544.377,435	4	395.502,16 544.379,426	2.679
4	395.502,16 544.379,426	5	395.488,501 544.394,6	20.416	5	395.488,501 544.394,6	6	395.484,778 544.398,245	5.21	6	395.484,778 544.398,245	7	395.475,83 544.407,009	12.525
7	395.475,83 544.407,009	8	395.468,075 544.414,603	10.854	8	395.468,075 544.414,603	9	395.464,948 544.417,323	4.144	9	395.464,948 544.417,323	10	395.458,553 544.422,885	8.475
10	395.458,553 544.422,885	11	395.456,151 544.424,973	3.183	11	395.456,151 544.424,973	12	395.450,877 544.428,686	6.45	12	395.450,877 544.428,686	13	395.446,814 544.431,547	4.969

Punct început	X / Y	Punct sfârșit	X / Y	Lungime segment	Punct început	X / Y	Punct sfârșit	X / Y	Lungime segment	Punct început	X / Y	Punct sfârșit	X / Y	Lungime segment
13	395.446,814 544.431,547	14	395.443,429 544.433,293	3.809	14	395.443,429 544.433,293	15	395.435,793 544.437,232	8.592	15	395.435,793 544.437,232	16	395.435,216 544.437,53	0.649
16	395.435,216 544.437,53	17	395.425,77 544.444,309	11.627	17	395.425,77 544.444,309	18	395.416,014 544.451,312	12.009	18	395.416,014 544.451,312	19	395.413,33 544.453,154	3.255
19	395.413,33 544.453,154	20	395.408,06 544.456,77	6.391	20	395.408,06 544.456,77	21	395.401,335 544.462,934	9.123	21	395.401,335 544.462,934	22	395.400,376 544.463,561	1.146
22	395.400,376 544.463,561	23	395.394,639 544.467,309	6.853	23	395.394,639 544.467,309	24	395.389,102 544.470,928	6.615	24	395.389,102 544.470,928	25	395.379,969 544.476,896	10.91
25	395.379,969 544.476,896	26	395.367,411 544.485,103	15.002	26	395.367,411 544.485,103	27	395.367,297 544.485,177	0.136	27	395.367,297 544.485,177	28	395.356,641 544.493,107	13.283
28	395.356,641 544.493,107	29	395.344,855 544.504,137	16.142	29	395.344,855 544.504,137	30	395.322,698 544.527,848	32.452	30	395.322,698 544.527,848	31	395.322,129 544.528,563	0.914
31	395.322,129 544.528,563	32	395.308,042 544.546,247	22.609	32	395.308,042 544.546,247	33	395.299,258 544.553,047	11.108	33	395.299,258 544.553,047	34	395.290,125 544.559,029	10.918
34	395.290,125 544.559,029	35	395.280,316 544.564,157	11.069	35	395.280,316 544.564,157	36	395.270,366 544.568,953	11.046	36	395.270,366 544.568,953	37	395.260,459 544.573,727	10.997
37	395.260,459 544.573,727	38	395.250,483 544.579,507	11.529	38	395.250,483 544.579,507	39	395.238,181 544.586,635	14.218	39	395.238,181 544.586,635	40	395.230,47 544.592,142	9.476
40	395.230,47 544.592,142	41	395.220,836 544.599,021	11.838	41	395.220,836 544.599,021	42	395.204,078 544.614,12	22.557	42	395.204,078 544.614,12	43	395.195,473 544.624,277	13.312
43	395.195,473 544.624,277	44	395.189,059 544.634,058	11.696	44	395.189,059 544.634,058	45	395.183,278 544.648,93	15.956	45	395.183,278 544.648,93	46	395.171,489 544.683,343	36.376
46	395.171,489 544.683,343	47	395.171,445 544.699,966	16.623	47	395.171,445 544.699,966	48	395.172,74 544.722,863	22.934	48	395.172,74 544.722,863	49	395.173,002 544.740,53	17.669
49	395.173,002 544.740,53	50	395.172,795 544.749,74	9.212	50	395.172,795 544.749,74	51	395.167,475 544.819,194	69.657	51	395.167,475 544.819,194	52	395.166,646 544.843,841	24.661
52	395.166,646 544.843,841	53	395.164,321 544.862,652	18.954	53	395.164,321 544.862,652	54	395.164,159 544.868,409	5.759	54	395.164,159 544.868,409	55	395.164,036 544.872,79	4.383
55	395.164,036 544.872,79	56	395.166,331 544.889,503	16.87	56	395.166,331 544.889,503	57	395.165,769 544.894,206	4.736	57	395.165,769 544.894,206	58	395.160,801 544.903,592	10.62
58	395.160,801 544.903,592	59	395.151,943 544.923,131	21.453	59	395.151,943 544.923,131	60	395.148,183 544.928,728	6.743	60	395.148,183 544.928,728	61	395.131,442 544.944,023	22.676
61	395.131,442 544.944,023	62	395.109,896 544.959,844	26.731	62	395.109,896 544.959,844	63	395.093,177 544.969,323	19.219	63	395.093,177 544.969,323	64	395.043,698 544.978,309	50.288
64	395.043,698 544.978,309	65	395.015,758 544.977,034	27.969	65	395.015,758 544.977,034	66	394.983,493 544.974,953	32.332	66	394.983,493 544.974,953	67	394.957,962 544.972,738	25.627
67	394.957,962 544.972,738	68	394.936,237 544.966,661	22.559	68	394.936,237 544.966,661	69	394.919,497 544.961,795	17.433	69	394.919,497 544.961,795	70	394.889,749 544.953,498	30.883
70	394.889,749 544.953,498	71	394.866,465 544.949,032	23.708	71	394.866,465 544.949,032	72	394.840,49 544.945,432	26.223	72	394.840,49 544.945,432	73	394.813,011 544.941,249	27.796
73	394.813,011 544.941,249	74	394.802,831 544.939,387	10.349	74	394.802,831 544.939,387	75	394.793,252 544.939,721	9.585	75	394.793,252 544.939,721	76	394.783,709 544.939,259	9.554
76	394.783,709 544.939,259	77	394.770,213 544.946,09	15.126	77	394.770,213 544.946,09	78	394.736,314 544.898,665	58.295	78	394.736,314 544.898,665	79	394.751,109 544.888,595	17.897
79	394.751,109 544.888,595	80	394.783,807 544.882,606	33.242	80	394.783,807 544.882,606	81	394.795,114 544.882,808	11.309	81	394.795,114 544.882,808	82	394.810,22 544.883,078	15.108
82	394.810,22 544.883,078	83	394.849,7 544.892,713	40.639	83	394.849,7 544.892,713	84	394.877,882 544.904,517	30.554	84	394.877,882 544.904,517	85	394.878,974 544.904,936	1.17
85	394.878,974 544.904,936	86	394.912,839 544.917,94	36.276	86	394.912,839 544.917,94	87	394.936,357 544.926,836	25.144	87	394.936,357 544.926,836	88	394.968,0 544.928,215	31.673
88	394.968,0 544.928,215	89	394.997,025 544.916,903	31.151	89	394.997,025 544.916,903	90	395.015,208 544.911,347	19.013	90	395.015,208 544.911,347	91	395.031,381 544.899,643	19.964
91	395.031,381 544.899,643	92	395.037,084 544.895,926	6.807	92	395.037,084 544.895,926	93	395.037,448 544.886,893	9.04	93	395.037,448 544.886,893	94	395.031,908 544.881,144	7.984
94	395.031,908 544.881,144	95	395.020,59 544.865,176	19.572	95	395.020,59 544.865,176	96	395.032,744 544.847,491	21.459	96	395.032,744 544.847,491	97	395.038,422 544.839,228	10.026
97	395.038,422 544.839,228	98	395.039,312 544.821,191	18.059	98	395.039,312 544.821,191	99	395.038,942 544.816,43	4.775	99	395.038,942 544.816,43	100	395.037,559 544.798,599	17.885
100	395.037,559 544.798,599	101	395.033,923 544.779,708	19.238	101	395.033,923 544.779,708	102	395.030,962 544.764,328	15.662	102	395.030,962 544.764,328	103	395.029,769 544.757,623	6.81
103	395.029,769 544.757,623	104	395.025,262 544.732,312	25.709	104	395.025,262 544.732,312	105	395.022,537 544.720,711	11.917	105	395.022,537 544.720,711	106	395.020,377 544.711,513	9.448
106	395.020,377 544.711,513	107	395.016,414 544.692,471	19.45	107	395.016,414 544.692,471	108	395.015,891 544.689,956	2.569	108	395.015,891 544.689,956	109	395.015,853 544.689,862	0.101
109	395.015,853 544.689,862	110	395.012,048 544.680,355	10.24	110	395.012,048 544.680,355	111	395.004,135 544.652,115	29.328	111	395.004,135 544.652,115	112	395.002,32 544.645,637	6.727

Punct început	X / Y	Punct sfârșit	X / Y	Lungime segment	Punct început	X / Y	Punct sfârșit	X / Y	Lungime segment	Punct început	X / Y	Punct sfârșit	X / Y	Lungime segment
112	395.002,32 544.645,637	113	394.997,662 544.637,155	9.677	113	394.997,662 544.637,155	114	394.977,158 544.610,656	33.505	114	394.977,158 544.610,656	115	394.970,397 544.601,919	11.047
115	394.970,397 544.601,919	116	394.969,004 544.593,451	8.582	116	394.969,004 544.593,451	117	394.981,782 544.584,823	15.418	117	394.981,782 544.584,823	118	394.995,399 544.563,095	25.642
118	394.995,399 544.563,095	119	394.995,549 544.562,856	0.282	119	394.995,549 544.562,856	120	395.003,811 544.553,29	12.64	120	395.003,811 544.553,29	121	395.012,461 544.543,274	13.234
121	395.012,461 544.543,274	122	395.018,751 544.535,992	9.622	122	395.018,751 544.535,992	123	395.020,578 544.531,813	4.561	123	395.020,578 544.531,813	124	395.024,448 544.522,964	9.658
124	395.024,448 544.522,964	125	395.032,013 544.521,745	7.663	125	395.032,013 544.521,745	126	395.039,18 544.524,717	7.759	126	395.039,18 544.524,717	127	395.051,971 544.518,496	14.224
127	395.051,971 544.518,496	128	395.055,866 544.504,35	14.672	128	395.055,866 544.504,35	129	395.057,087 544.493,491	10.927	129	395.057,087 544.493,491	130	395.062,323 544.489,183	6.78
130	395.062,323 544.489,183	131	395.066,139 544.489,972	3.897	131	395.066,139 544.489,972	132	395.070,916 544.505,092	15.857	132	395.070,916 544.505,092	133	395.082,169 544.512,685	13.575
133	395.082,169 544.512,685	134	395.088,272 544.516,803	7.362	134	395.088,272 544.516,803	135	395.095,735 544.499,835	18.537	135	395.095,735 544.499,835	136	395.093,798 544.479,844	20.085
136	395.093,798 544.479,844	137	395.084,182 544.455,522	26.154	137	395.084,182 544.455,522	138	395.074,387 544.421,038	35.848	138	395.074,387 544.421,038	139	395.066,871 544.395,146	26.961
139	395.066,871 544.395,146	140	395.069,05 544.372,783	22.469	140	395.069,05 544.372,783	141	395.076,758 544.360,989	14.089	141	395.076,758 544.360,989	142	395.079,926 544.350,95	10.527
142	395.079,926 544.350,95	143	395.083,002 544.341,2	10.224	143	395.083,002 544.341,2	144	395.074,107 544.313,792	28.815	144	395.074,107 544.313,792	145	395.067,461 544.293,313	21.53
145	395.067,461 544.293,313	146	395.058,729 544.278,093	17.547	146	395.058,729 544.278,093	147	395.050,504 544.260,039	19.839	147	395.050,504 544.260,039	148	395.035,336 544.252,251	17.051
148	395.035,336 544.252,251	149	395.010,053 544.274,716	33.822	149	395.010,053 544.274,716	150	395.007,163 544.277,284	3.866	150	395.007,163 544.277,284	151	395.015,001 544.285,14	11.097
151	395.015,001 544.285,14	152	395.012,513 544.291,879	7.184	152	395.012,513 544.291,879	153	395.009,881 544.292,656	2.744	153	395.009,881 544.292,656	154	394.998,163 544.288,001	12.609
154	394.998,163 544.288,001	155	394.993,837 544.286,282	4.655	155	394.993,837 544.286,282	156	394.985,77 544.288,542	8.378	156	394.985,77 544.288,542	157	394.981,613 544.288,623	4.158
157	394.981,613 544.288,623	158	394.977,243 544.286,284	4.957	158	394.977,243 544.286,284	159	394.975,48 544.282,502	4.173	159	394.975,48 544.282,502	160	394.973,637 544.274,647	8.068
160	394.973,637 544.274,647	161	394.970,428 544.260,974	14.045	161	394.970,428 544.260,974	162	394.971,011 544.216,479	44.499	162	394.971,011 544.216,479	163	394.942,401 544.202,918	31.661
163	394.942,401 544.202,918	164	394.942,106 544.197,129	5.797	164	394.942,106 544.197,129	165	394.945,802 544.191,899	6.404	165	394.945,802 544.191,899	166	394.953,036 544.187,745	8.342
166	394.953,036 544.187,745	167	394.971,576 544.180,509	19.902	167	394.971,576 544.180,509	168	394.976,665 544.179,907	5.124	168	394.976,665 544.179,907	169	395.013,916 544.175,504	37.51
169	395.013,916 544.175,504	170	395.026,229 544.174,048	12.399	170	395.026,229 544.174,048	171	395.052,711 544.173,894	26.482	171	395.052,711 544.173,894	172	395.065,026 544.178,51	13.152
172	395.065,026 544.178,51	173	395.072,417 544.182,202	8.262	173	395.072,417 544.182,202	174	395.081,655 544.185,278	9.737	174	395.081,655 544.185,278	175	395.095,511 544.189,893	14.604
175	395.095,511 544.189,893	176	395.107,364 544.192,509	12.138	176	395.107,364 544.192,509	177	395.113,986 544.193,894	6.765	177	395.113,986 544.193,894	178	395.119,067 544.200,2	8.098
178	395.119,067 544.200,2	179	395.126,301 544.204,662	8.499	179	395.126,301 544.204,662	180	395.138,158 544.206,355	11.977	180	395.138,158 544.206,355	181	395.157,87 544.209,257	19.924
181	395.157,87 544.209,257	182	395.181,004 544.203,142	23.929	182	395.181,004 544.203,142	183	395.191,651 544.202,955	10.649	183	395.191,651 544.202,955	184	395.218,217 544.200,037	26.726
184	395.218,217 544.200,037	185	395.226,918 544.204,833	9.935	185	395.226,918 544.204,833	186	395.232,683 544.205,455	5.798	186	395.232,683 544.205,455	187	395.248,095 544.203,333	15.557
187	395.248,095 544.203,333	188	395.259,308 544.197,309	12.729	188	395.259,308 544.197,309	189	395.276,91 544.193,256	18.063	189	395.276,91 544.193,256	190	395.289,207 544.193,569	12.301
190	395.289,207 544.193,569	191	395.310,721 544.201,968	23.095	191	395.310,721 544.201,968	192	395.333,789 544.208,293	23.919	192	395.333,789 544.208,293	193	395.351,341 544.212,596	18.072
193	395.351,341 544.212,596	194	395.367,306 544.217,311	16.647	194	395.367,306 544.217,311	195	395.390,742 544.219,129	23.506	195	395.390,742 544.219,129	196	395.406,99 544.218,356	16.266
196	395.406,99 544.218,356	197	395.413,967 544.216,099	7.333	197	395.413,967 544.216,099	198	395.419,271 544.213,31	5.993	198	395.419,271 544.213,31	199	395.428,499 544.214,229	9.274
199	395.428,499 544.214,229	200	395.436,676 544.201,547	15.09	200	395.436,676 544.201,547	201	395.443,268 544.182,949	19.732	201	395.443,268 544.182,949	202	395.451,408 544.171,095	14.38
202	395.451,408 544.171,095	203	395.469,077 544.149,518	27.888	203	395.469,077 544.149,518	204	395.481,26 544.139,142	16.003	204	395.481,26 544.139,142	205	395.487,932 544.131,86	9.876
205	395.487,932 544.131,86	206	395.486,388 544.124,125	7.888	206	395.486,388 544.124,125	207	395.479,68 544.121,878	7.074	207	395.479,68 544.121,878	208	395.476,152 544.120,65	3.736
208	395.476,152 544.120,65	209	395.473,122 544.118,474	3.73	209	395.473,122 544.118,474	210	395.473,763 544.113,402	5.112	210	395.473,763 544.113,402	211	395.481,169 544.110,557	7.934

Punct început	X / Y	Punct sfârșit	X / Y	Lungime segment	Punct început	X / Y	Punct sfârșit	X / Y	Lungime segment	Punct început	X / Y	Punct sfârșit	X / Y	Lungime segment
211	395.481,169 544.110,557	212	395.493,114 544.109,624	11.981	212	395.493,114 544.109,624	213	395.510,828 544.106,789	17.939	213	395.510,828 544.106,789	214	395.523,423 544.102,84	13.2
214	395.523,423 544.102,84	215	395.526,192 544.099,149	4.614	215	395.526,192 544.099,149	216	395.526,563 544.097,722	1.474	216	395.526,563 544.097,722	217	395.573,953 544.150,291	70.776
217	395.573,953 544.150,291	218	395.587,977 544.170,237	24.383	218	395.587,977 544.170,237	219	395.593,497 544.178,086	9.596	219	395.593,497 544.178,086	220	395.597,172 544.201,26	23.464
220	395.597,172 544.201,26	221	395.596,689 544.210,42	9.173	221	395.596,689 544.210,42	222	395.585,444 544.267,804	58.475	222	395.585,444 544.267,804	223	395.582,196 544.274,295	7.258
223	395.582,196 544.274,295	224	395.578,562 544.279,11	6.032	224	395.578,562 544.279,11	225	395.575,727 544.281,556	3.744	225	395.575,727 544.281,556	226	395.571,801 544.284,945	5.186
226	395.571,801 544.284,945	227	395.567,594 544.287,986	5.191	227	395.567,594 544.287,986	228	395.557,139 544.295,542	12.9	228	395.557,139 544.295,542	229	395.556,78 544.295,759	0.419
229	395.556,78 544.295,759	230	395.551,843 544.298,74	5.767	230	395.551,843 544.298,74	231	395.542,54 544.304,357	10.867	231	395.542,54 544.304,357	232	395.541,402 544.305,414	1.553
232	395.541,402 544.305,414	233	395.533,964 544.312,318	10.148	233	395.533,964 544.312,318	234	395.530,495 544.316,513	5.444	234	395.530,495 544.316,513	235	395.528,509 544.318,916	3.117
235	395.528,509 544.318,916	236	395.524,167 544.325,314	7.732	236	395.524,167 544.325,314	237	395.523,37 544.327,029	1.891	237	395.523,37 544.327,029	238	395.521,03 544.332,061	5.549
238	395.521,03 544.332,061	239	395.519,139 544.337,798	6.041	239	395.519,139 544.337,798	240	395.517,593 544.342,487	4.937	240	395.517,593 544.342,487	1	395.513,43 544.358,899	16.932

** Lungimile segmentelor sunt determinate în planul de proiecție Stereo 70 și sunt rotunjite la 1 milimetru.

*** Distanța dintre puncte este formată din segmente cumulate ce sunt mai mici decât valoarea 1 milimetru.

**DATE DESPRE IMOBILUL NR. 7087**

Oficiul de Cadastru și Publicitate Imobiliară ALBA
Biroul de Cadastru și Publicitate Imobiliară Aiud

A. Partea I. Descrierea imobilului

TEREN Extravilan

Adresa: Jud. Alba

Nr. Crt	Nr cadastral Nr. topografic	Suprafața* (mp)	Observații / Referințe
A1		451.920	Sector cadastral:11 Teren neimprijmit;

B. Partea II. Proprietari și acte

Inscrieri privitoare la dreptul de proprietate și alte drepturi reale	Referințe
1 / 01/01/2023	
Act Normativ nr. 7, din 13/03/1996 emis de PARLAMENT;	
B1	Inscrierea provizorie, drept de PROPRIETATE, dobandit prin Lege, cota actuala 1/1
	1) UAT MIRSLĂU, CIF:9999999999999

C. Partea III. SARCINI .

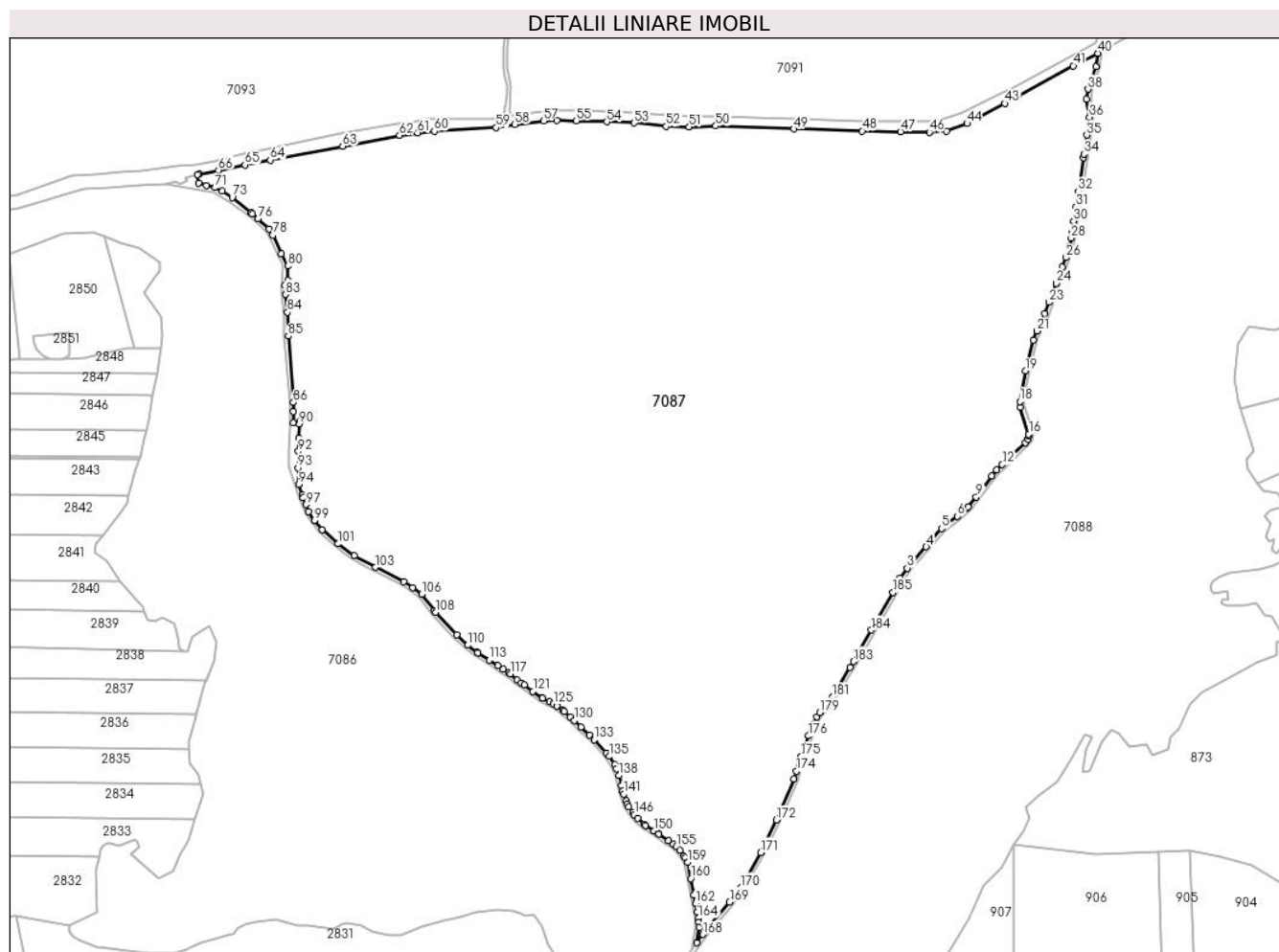
Inscrieri privind dezmembramintele dreptului de proprietate, drepturi reale de garanție și sarcini	Referințe
NU SUNT	

Anexa Nr. 1 La Partea I

Teren

Nr cadastral	Suprafața (mp)*	Observații / Referințe
	451.920	

* Suprafața este determinată în planul de proiecție Stereo 70.



Date referitoare la teren

Crt	Categorie folosință	Intravilan	Suprafața (mp)	Tarla	Parcelă	Nr. topo	Observații / Referințe
1	faneata	NU	446.480	-	-	-	
2	livada	NU	5.440	-	-	-	

Lungime Segmente

1) Valorile lungimilor segmentelor sunt obținute din proiecție în plan.

Punct început	X / Y	Punct sfârșit	X / Y	Lungime segment	Punct început	X / Y	Punct sfârșit	X / Y	Lungime segment	Punct început	X / Y	Punct sfârșit	X / Y	Lungime segment
1	395.809,084 544.563,257	2	395.811,468 544.566,527	4.047	2	395.811,468 544.566,527	3	395.819,005 544.576,862	12.791	3	395.819,005 544.576,862	4	395.838,855 544.599,051	29.772
4	395.838,855 544.599,051	5	395.854,788 544.618,248	24.948	5	395.854,788 544.618,248	6	395.871,421 544.631,056	20.993	6	395.871,421 544.631,056	7	395.880,925 544.639,014	12.396
7	395.880,925 544.639,014	8	395.882,512 544.640,928	2.486	8	395.882,512 544.640,928	9	395.891,073 544.651,252	13.412	9	395.891,073 544.651,252	10	395.907,143 544.673,247	27.24
10	395.907,143 544.673,247	11	395.912,415 544.679,457	8.146	11	395.912,415 544.679,457	12	395.918,408 544.685,103	8.234	12	395.918,408 544.685,103	13	395.942,591 544.707,865	33.21
13	395.942,591 544.707,865	14	395.945,338 544.711,752	4.76	14	395.945,338 544.711,752	15	395.946,127 544.714,741	3.091	15	395.946,127 544.714,741	16	395.946,134 544.716,888	2.147

Punct început	X / Y	Punct sfârșit	X / Y	Lungime segment	Punct început	X / Y	Punct sfârșit	X / Y	Lungime segment	Punct început	X / Y	Punct sfârșit	X / Y	Lungime segment
16	395.946,134 544.716,888	17	395.937,244 544.745,003	29.487	17	395.937,244 544.745,003	18	395.936,823 544.751,04	6.052	18	395.936,823 544.751,04	19	395.942,7 544.782,932	32.429
19	395.942,7 544.782,932	20	395.950,815 544.815,449	33.514	20	395.950,815 544.815,449	21	395.954,858 544.824,595	10.0	21	395.954,858 544.824,595	22	395.962,822 544.842,611	19.698
22	395.962,822 544.842,611	23	395.967,282 544.854,697	12.883	23	395.967,282 544.854,697	24	395.974,66 544.874,693	21.314	24	395.974,66 544.874,693	25	395.981,114 544.891,566	18.065
25	395.981,114 544.891,566	26	395.984,864 544.901,368	10.495	26	395.984,864 544.901,368	27	395.988,111 544.913,285	12.351	27	395.988,111 544.913,285	28	395.990,434 544.921,805	8.831
28	395.990,434 544.921,805	29	395.991,313 544.927,316	5.581	29	395.991,313 544.927,316	30	395.993,3 544.939,778	12.619	30	395.993,3 544.939,778	31	395.995,699 544.954,816	15.228
31	395.995,699 544.954,816	32	395.998,034 544.970,425	15.783	32	395.998,034 544.970,425	33	396.003,369 545.006,078	36.05	33	396.003,369 545.006,078	34	396.003,915 545.009,729	3.692
34	396.003,915 545.009,729	35	396.006,879 545.029,543	20.034	35	396.006,879 545.029,543	36	396.009,662 545.048,14	18.804	36	396.009,662 545.048,14	37	396.006,738 545.067,076	19.16
37	396.006,738 545.067,076	38	396.008,146 545.077,439	10.458	38	396.008,146 545.077,439	39	396.016,294 545.100,848	24.787	39	396.016,294 545.100,848	40	396.018,208 545.115,088	14.368
40	396.018,208 545.115,088	41	395.992,693 545.101,934	28.706	41	395.992,693 545.101,934	42	395.935,342 545.070,337	65.479	42	395.935,342 545.070,337	43	395.921,136 545.062,468	16.24
43	395.921,136 545.062,468	44	395.881,64 545.041,633	44.655	44	395.881,64 545.041,633	45	395.860,387 545.033,804	22.649	45	395.860,387 545.033,804	46	395.842,185 545.032,374	18.258
46	395.842,185 545.032,374	47	395.812,105 545.033,053	30.088	47	395.812,105 545.033,053	48	395.771,896 545.033,828	40.216	48	395.771,896 545.033,828	49	395.700,342 545.035,914	71.584
49	395.700,342 545.035,914	50	395.618,719 545.038,996	81.681	50	395.618,719 545.038,996	51	395.590,9 545.038,047	27.835	51	395.590,9 545.038,047	52	395.566,8 545.038,522	24.105
52	395.566,8 545.038,522	53	395.533,268 545.042,191	33.732	53	395.533,268 545.042,191	54	395.504,959 545.043,327	28.332	54	395.504,959 545.043,327	55	395.472,807 545.044,521	32.174
55	395.472,807 545.044,521	56	395.452,561 545.044,945	20.25	56	395.452,561 545.044,945	57	395.438,418 545.044,186	14.163	57	395.438,418 545.044,186	58	395.408,597 545.040,59	30.037
58	395.408,597 545.040,59	59	395.389,003 545.037,244	19.878	59	395.389,003 545.037,244	60	395.324,229 545.033,515	64.881	60	395.324,229 545.033,515	61	395.306,864 545.031,901	17.44
61	395.306,864 545.031,901	62	395.287,747 545.029,316	19.291	62	395.287,747 545.029,316	63	395.228,348 545.017,767	60.511	63	395.228,348 545.017,767	64	395.152,709 545.003,488	76.975
64	395.152,709 545.003,488	65	395.126,07 544.998,406	27.119	65	395.126,07 544.998,406	66	395.098,296 544.992,818	28.331	66	395.098,296 544.992,818	67	395.078,575 544.988,849	20.116
67	395.078,575 544.988,849	68	395.076,689 544.988,301	1.964	68	395.076,689 544.988,301	69	395.077,659 544.979,348	9.005	69	395.077,659 544.979,348	70	395.085,935 544.977,028	8.595
70	395.085,935 544.977,028	71	395.094,847 544.974,529	9.256	71	395.094,847 544.974,529	72	395.102,424 544.971,111	8.312	72	395.102,424 544.971,111	73	395.112,786 544.964,41	12.34
73	395.112,786 544.964,41	74	395.132,567 544.948,267	25.532	74	395.132,567 544.948,267	75	395.134,057 544.947,051	1.923	75	395.134,057 544.947,051	76	395.139,791 544.941,813	7.766
76	395.139,791 544.941,813	77	395.151,235 544.931,357	15.501	77	395.151,235 544.931,357	78	395.155,449 544.925,086	7.555	78	395.155,449 544.925,086	79	395.164,394 544.905,355	21.664
79	395.164,394 544.905,355	80	395.171,369 544.892,547	14.584	80	395.171,369 544.892,547	81	395.171,159 544.877,858	14.691	81	395.171,159 544.877,858	82	395.168,043 544.872,573	6.135
82	395.168,043 544.872,573	83	395.168,314 544.862,954	9.623	83	395.168,314 544.862,954	84	395.170,638 544.844,154	18.943	84	395.170,638 544.844,154	85	395.171,47 544.819,414	24.754
85	395.171,47 544.819,414	86	395.176,792 544.749,938	69.68	86	395.176,792 544.749,938	87	395.177,003 544.740,545	9.395	87	395.177,003 544.740,545	88	395.176,829 544.728,834	11.712
88	395.176,829 544.728,834	89	395.183,587 544.730,448	6.948	89	395.183,587 544.730,448	90	395.182,772 544.727,439	3.117	90	395.182,772 544.727,439	91	395.182,381 544.712,92	14.524
91	395.182,381 544.712,92	92	395.182,088 544.698,778	14.145	92	395.182,088 544.698,778	93	395.181,707 544.681,535	17.247	93	395.181,707 544.681,535	94	395.182,289 544.664,159	17.386
94	395.182,289 544.664,159	95	395.185,963 544.653,434	11.337	95	395.185,963 544.653,434	96	395.187,035 544.650,303	3.309	96	395.187,035 544.650,303	97	395.189,795 544.643,204	7.617
97	395.189,795 544.643,204	98	395.192,635 544.635,899	7.838	98	395.192,635 544.635,899	99	395.198,683 544.626,676	11.029	99	395.198,683 544.626,676	100	395.206,956 544.616,911	12.798
100	395.206,956 544.616,911	101	395.223,345 544.602,145	22.06	101	395.223,345 544.602,145	102	395.240,316 544.590,026	20.854	102	395.240,316 544.590,026	103	395.262,754 544.577,653	25.623
103	395.262,754 544.577,653	104	395.292,143 544.562,488	33.071	104	395.292,143 544.562,488	105	395.301,514 544.556,35	11.202	105	395.301,514 544.556,35	106	395.311,194 544.549,458	11.883
106	395.311,194 544.549,458	107	395.324,281 544.532,362	21.53	107	395.324,281 544.532,362	108	395.325,755 544.530,436	2.425	108	395.325,755 544.530,436	109	395.347,686 544.506,966	32.122
109	395.347,686 544.506,966	110	395.359,21 544.496,181	15.783	110	395.359,21 544.496,181	111	395.369,143 544.488,79	12.381	111	395.369,143 544.488,79	112	395.369,587 544.488,459	0.554
112	395.369,587 544.488,459	113	395.381,609 544.480,603	14.361	113	395.381,609 544.480,603	114	395.390,773 544.474,614	10.947	114	395.390,773 544.474,614	115	395.396,314 544.470,994	6.619

Punct început	X / Y	Punct sfârșit	X / Y	Lungime segment	Punct început	X / Y	Punct sfârșit	X / Y	Lungime segment	Punct început	X / Y	Punct sfârșit	X / Y	Lungime segment
115	395.396,314 544.470,994	116	395.402,006 544.467,274	6.8	116	395.402,006 544.467,274	117	395.403,797 544.466,103	2.14	117	395.403,797 544.466,103	118	395.410,555 544.459,909	9.167
118	395.410,555 544.459,909	119	395.415,099 544.456,791	5.511	119	395.415,099 544.456,791	120	395.418,312 544.454,586	3.897	120	395.418,312 544.454,586	121	395.427,468 544.448,014	11.27
121	395.427,468 544.448,014	122	395.437,31 544.440,951	12.114	122	395.437,31 544.440,951	123	395.437,435 544.440,886	0.141	123	395.437,435 544.440,886	124	395.445,052 544.436,957	8.571
124	395.445,052 544.436,957	125	395.448,892 544.434,976	4.321	125	395.448,892 544.434,976	126	395.452,51 544.432,429	4.425	126	395.452,51 544.432,429	127	395.458,621 544.428,126	7.474
127	395.458,621 544.428,126	128	395.460,264 544.426,698	2.177	128	395.460,264 544.426,698	129	395.466,675 544.421,122	8.497	129	395.466,675 544.421,122	130	395.470,789 544.417,544	5.452
130	395.470,789 544.417,544	131	395.477,621 544.410,853	9.563	131	395.477,621 544.410,853	132	395.486,502 544.402,156	12.43	132	395.486,502 544.402,156	133	395.491,389 544.397,37	6.84
133	395.491,389 544.397,37	134	395.504,17 544.383,172	19.103	134	395.504,17 544.383,172	135	395.507,072 544.379,949	4.337	135	395.507,072 544.379,949	136	395.513,145 544.371,503	10.403
136	395.513,145 544.371,503	137	395.514,839 544.366,798	5.001	137	395.514,839 544.366,798	138	395.517,26 544.360,071	7.149	138	395.517,26 544.360,071	139	395.520,057 544.349,043	11.377
139	395.520,057 544.349,043	140	395.521,436 544.343,606	5.609	140	395.521,436 544.343,606	141	395.522,388 544.340,72	3.039	141	395.522,388 544.340,72	142	395.524,756 544.333,535	7.565
142	395.524,756 544.333,535	143	395.526,207 544.330,414	3.442	143	395.526,207 544.330,414	144	395.527,658 544.327,293	3.442	144	395.527,658 544.327,293	145	395.531,712 544.321,319	7.22
145	395.531,712 544.321,319	146	395.533,559 544.319,085	2.899	146	395.533,559 544.319,085	147	395.536,878 544.315,07	5.209	147	395.536,878 544.315,07	148	395.543,72 544.308,72	9.335
148	395.543,72 544.308,72	149	395.544,96 544.307,569	1.692	149	395.544,96 544.307,569	150	395.554,24 544.301,965	10.841	150	395.554,24 544.301,965	151	395.558,482 544.299,404	4.955
151	395.558,482 544.299,404	152	395.559,348 544.298,881	1.012	152	395.559,348 544.298,881	153	395.569,362 544.291,643	12.356	153	395.569,362 544.291,643	154	395.574,284 544.288,086	6.073
154	395.574,284 544.288,086	155	395.577,553 544.285,264	4.319	155	395.577,553 544.285,264	156	395.581,498 544.281,859	5.211	156	395.581,498 544.281,859	157	395.585,61 544.276,413	6.824
157	395.585,61 544.276,413	158	395.586,586 544.274,461	2.182	158	395.586,586 544.274,461	159	395.589,264 544.269,107	5.986	159	395.589,264 544.269,107	160	395.592,551 544.252,334	17.092
160	395.592,551 544.252,334	161	395.595,976 544.234,857	17.809	161	395.595,976 544.234,857	162	395.597,687 544.226,128	8.895	162	395.597,687 544.226,128	163	395.599,451 544.217,13	9.169
163	395.599,451 544.217,13	164	395.600,669 544.210,912	6.336	164	395.600,669 544.210,912	165	395.600,907 544.206,397	4.521	165	395.600,907 544.206,397	166	395.601,189 544.201,05	5.354
166	395.601,189 544.201,05	167	395.598,657 544.185,088	16.162	167	395.598,657 544.185,088	168	395.605,036 544.193,742	10.751	168	395.605,036 544.193,742	169	395.633,202 544.227,683	44.106
169	395.633,202 544.227,683	170	395.644,647 544.242,884	19.028	170	395.644,647 544.242,884	171	395.665,546 544.279,455	42.121	171	395.665,546 544.279,455	172	395.682,143 544.313,422	37.805
172	395.682,143 544.313,422	173	395.700,485 544.356,222	46.565	173	395.700,485 544.356,222	174	395.702,994 544.364,379	8.534	174	395.702,994 544.364,379	175	395.707,683 544.379,625	15.951
175	395.707,683 544.379,625	176	395.715,866 544.401,411	23.272	176	395.715,866 544.401,411	177	395.720,249 544.413,08	12.465	177	395.720,249 544.413,08	178	395.724,125 544.421,437	9.212
178	395.724,125 544.421,437	179	395.727,288 544.425,981	5.536	179	395.727,288 544.425,981	180	395.734,48 544.433,636	10.504	180	395.734,48 544.433,636	181	395.740,922 544.442,209	10.724
181	395.740,922 544.442,209	182	395.759,291 544.473,016	35.868	182	395.759,291 544.473,016	183	395.762,987 544.479,214	7.216	183	395.762,987 544.479,214	184	395.781,511 544.511,926	37.593
184	395.781,511 544.511,926	185	395.803,968 544.551,582	45.573	185	395.803,968 544.551,582	1	395.809,084 544.563,257	12.747					

** Lungimile segmentelor sunt determinate în planul de proiecție Stereo 70 și sunt rotunjite la 1 milimetru.

*** Distanța dintre puncte este formată din segmente cumulate ce sunt mai mici decât valoarea 1 milimetru.

**DATE DESPRE IMOBILUL NR. 7088**

Oficiul de Cadastru și Publicitate Imobiliară ALBA
Biroul de Cadastru și Publicitate Imobiliară Aiud

A. Partea I. Descrierea imobilului

TEREN Extravilan

Adresa: Jud. Alba

Nr. Crt	Nr cadastral Nr. topografic	Suprafața* (mp)	Observații / Referințe
A1		411.897	Sector cadastral:11 Teren neimprijmit;

B. Partea II. Proprietari și acte

Inscrieri privitoare la dreptul de proprietate și alte drepturi reale		Referințe
1 / 01/01/2023		
Act Normativ nr. 7, din 13/03/1996 emis de PARLAMENT;		
B1	Inscrierea provizorie, drept de PROPRIETATE, dobandit prin Lege, cota actuala 1/1 1) UAT MIRSLĂU, CIF:9999999999999	A1

C. Partea III. SARCINI .

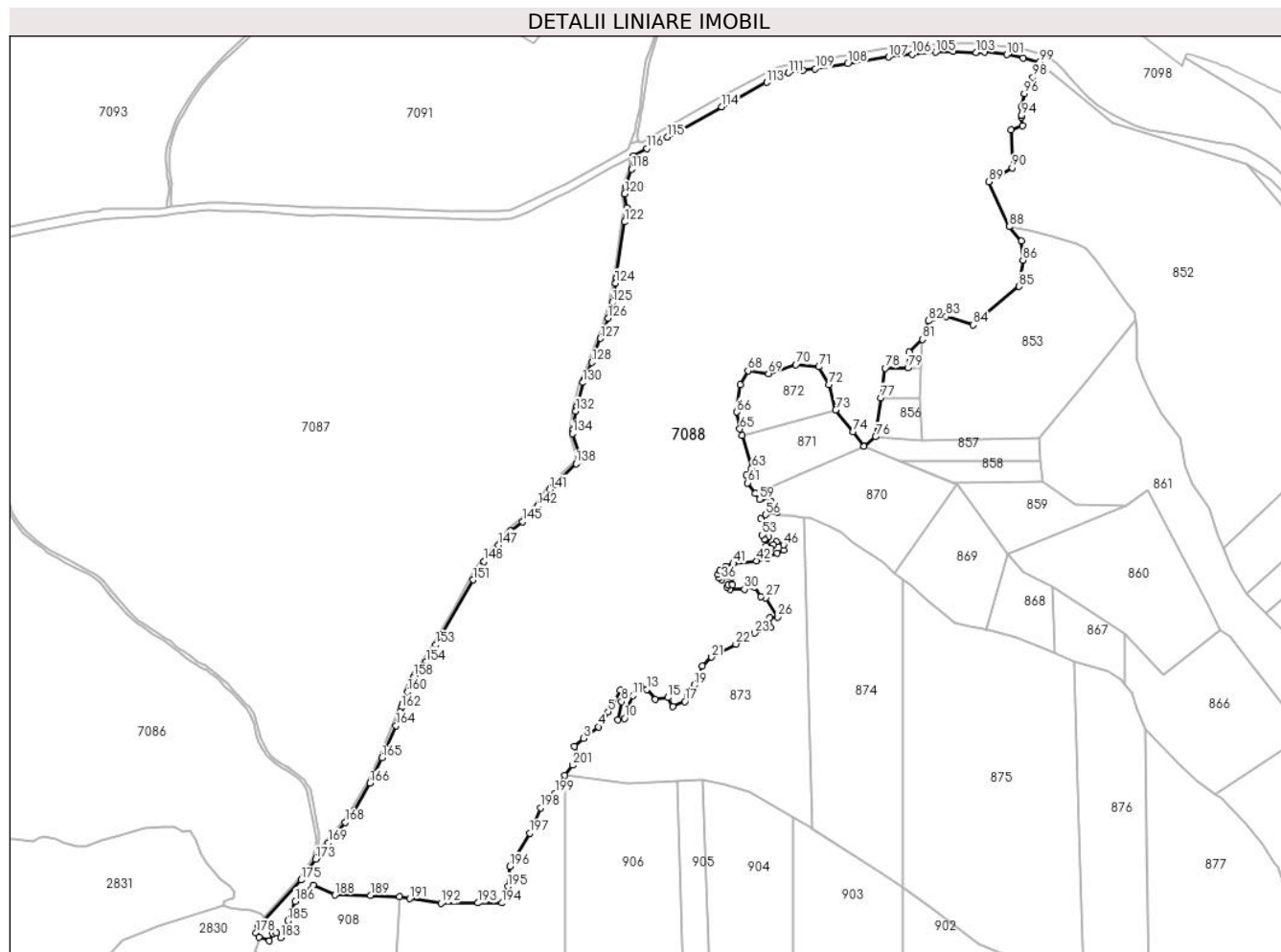
Inscrieri privind dezmembramintele dreptului de proprietate, drepturi reale de garanție și sarcini	Referințe
NU SUNT	

Anexa Nr. 1 La Partea I

Teren

Nr cadastral	Suprafața (mp)*	Observații / Referințe
	411.897	

* Suprafața este determinată în planul de proiecție Stereo 70.



Date referitoare la teren

Crt	Categorie folosință	Intravilan	Suprafața (mp)	Tarla	Parcelă	Nr. topo	Observații / Referințe
1	faneata	NU	411.897	-	-	-	

Lungime Segmente

1) Valorile lungimilor segmentelor sunt obținute din proiecție în plan.

Punct început	X / Y	Punct sfârșit	X / Y	Lungime segment	Punct început	X / Y	Punct sfârșit	X / Y	Lungime segment	Punct început	X / Y	Punct sfârșit	X / Y	Lungime segment
1	395.946,733 544.315,133	2	395.943,329 544.326,992	12.338	2	395.943,329 544.326,992	3	395.955,89 544.337,708	16.511	3	395.955,89 544.337,708	4	395.975,541 544.353,22	25.036
4	395.975,541 544.353,22	5	395.988,811 544.373,362	24.12	5	395.988,811 544.373,362	6	396.004,786 544.402,104	32.883	6	396.004,786 544.402,104	7	396.012,7 544.400,625	8.051
7	396.012,7 544.400,625	8	396.006,708 544.386,878	14.996	8	396.006,708 544.386,878	9	396.001,957 544.362,922	24.423	9	396.001,957 544.362,922	10	396.010,333 544.364,475	8.519
10	396.010,333 544.364,475	11	396.022,062 544.394,812	32.525	11	396.022,062 544.394,812	12	396.032,225 544.407,494	16.252	12	396.032,225 544.407,494	13	396.040,831 544.403,305	9.571
13	396.040,831 544.403,305	14	396.051,91 544.389,979	17.33	14	396.051,91 544.389,979	15	396.068,678 544.392,314	16.93	15	396.068,678 544.392,314	16	396.075,438 544.380,716	13.424
16	396.075,438 544.380,716	17	396.091,4 544.387,11	17.195	17	396.091,4 544.387,11	18	396.094,393 544.399,662	12.904	18	396.094,393 544.399,662	19	396.103,967 544.409,198	13.513

Punct început	X / Y	Punct sfârșit	X / Y	Lungime segment	Punct început	X / Y	Punct sfârșit	X / Y	Lungime segment	Punct început	X / Y	Punct sfârșit	X / Y	Lungime segment
19	396.103,967 544.409,198	20	396.114,893 544.434,617	27.668	20	396.114,893 544.434,617	21	396.127,303 544.446,394	17.109	21	396.127,303 544.446,394	22	396.159,827 544.463,941	36.955
22	396.159,827 544.463,941	23	396.185,003 544.478,766	29.217	23	396.185,003 544.478,766	24	396.205,821 544.486,169	22.095	24	396.205,821 544.486,169	25	396.204,966 544.499,438	13.297
25	396.204,966 544.499,438	26	396.215,828 544.500,342	10.9	26	396.215,828 544.500,342	27	396.199,922 544.525,775	29.997	27	396.199,922 544.525,775	28	396.193,095 544.527,204	6.975
28	396.193,095 544.527,204	29	396.184,018 544.540,677	16.245	29	396.184,018 544.540,677	30	396.171,218 544.537,387	13.216	30	396.171,218 544.537,387	31	396.152,099 544.537,584	19.12
31	396.152,099 544.537,584	32	396.147,777 544.540,198	5.051	32	396.147,777 544.540,198	33	396.149,204 544.543,731	3.81	33	396.149,204 544.543,731	34	396.155,128 544.543,731	5.924
34	396.155,128 544.543,731	35	396.153,56 544.553,121	9.52	35	396.153,56 544.553,121	36	396.140,458 544.550,161	13.432	36	396.140,458 544.550,161	37	396.137,451 544.552,934	4.09
37	396.137,451 544.552,934	38	396.135,864 544.557,703	5.026	38	396.135,864 544.557,703	39	396.138,626 544.562,551	5.58	39	396.138,626 544.562,551	40	396.146,238 544.567,87	9.286
40	396.146,238 544.567,87	41	396.156,274 544.571,781	10.771	41	396.156,274 544.571,781	42	396.187,566 544.575,599	31.524	42	396.187,566 544.575,599	43	396.201,915 544.579,092	14.768
43	396.201,915 544.579,092	44	396.214,814 544.586,035	14.649	44	396.214,814 544.586,035	45	396.223,727 544.589,864	9.701	45	396.223,727 544.589,864	46	396.223,727 544.596,869	7.005
46	396.223,727 544.596,869	47	396.214,434 544.601,181	10.245	47	396.214,434 544.601,181	48	396.209,844 544.596,727	6.396	48	396.209,844 544.596,727	49	396.205,931 544.591,885	6.225
49	396.205,931 544.591,885	50	396.200,884 544.595,451	6.18	50	396.200,884 544.595,451	51	396.203,48 544.607,624	12.447	51	396.203,48 544.607,624	52	396.197,844 544.604,226	6.581
52	396.197,844 544.604,226	53	396.194,558 544.609,943	6.594	53	396.194,558 544.609,943	54	396.199,318 544.624,077	14.914	54	396.199,318 544.624,077	55	396.193,352 544.631,468	9.498
55	396.193,352 544.631,468	56	396.199,631 544.637,285	8.559	56	396.199,631 544.637,285	57	396.214,824 544.640,807	15.596	57	396.214,824 544.640,807	58	396.206,56 544.655,028	16.448
58	396.206,56 544.655,028	59	396.191,426 544.657,568	15.346	59	396.191,426 544.657,568	60	396.185,67 544.665,712	9.973	60	396.185,67 544.665,712	61	396.175,637 544.679,903	17.379
61	396.175,637 544.679,903	62	396.173,976 544.690,305	10.534	62	396.173,976 544.690,305	63	396.181,148 544.699,441	11.615	63	396.181,148 544.699,441	64	396.167,957 544.743,076	45.585
64	396.167,957 544.743,076	65	396.165,244 544.752,05	9.375	65	396.165,244 544.752,05	66	396.161,244 544.774,726	23.026	66	396.161,244 544.774,726	67	396.165,785 544.811,104	36.66
67	396.165,785 544.811,104	68	396.175,972 544.829,826	21.314	68	396.175,972 544.829,826	69	396.203,487 544.826,16	27.758	69	396.203,487 544.826,16	70	396.240,159 544.838,242	38.611
70	396.240,159 544.838,242	71	396.271,027 544.835,173	31.02	71	396.271,027 544.835,173	72	396.284,269 544.811,282	27.315	72	396.284,269 544.811,282	73	396.293,645 544.777,424	35.132
73	396.293,645 544.777,424	74	396.316,672 544.748,404	37.046	74	396.316,672 544.748,404	75	396.331,538 544.728,431	24.898	75	396.331,538 544.728,431	76	396.347,137 544.741,546	20.38
76	396.347,137 544.741,546	77	396.354,419 544.793,816	52.775	77	396.354,419 544.793,816	78	396.359,881 544.833,479	40.037	78	396.359,881 544.833,479	79	396.390,299 544.833,706	30.419
79	396.390,299 544.833,706	80	396.392,117 544.854,917	21.289	80	396.392,117 544.854,917	81	396.409,638 544.872,011	24.478	81	396.409,638 544.872,011	82	396.417,512 544.896,773	25.984
82	396.417,512 544.896,773	83	396.441,326 544.902,558	24.507	83	396.441,326 544.902,558	84	396.477,839 544.891,532	38.141	84	396.477,839 544.891,532	85	396.539,281 544.942,731	79.978
85	396.539,281 544.942,731	86	396.544,487 544.977,975	35.626	86	396.544,487 544.977,975	87	396.542,361 545.003,787	25.899	87	396.542,361 545.003,787	88	396.526,172 545.022,928	25.069
88	396.526,172 545.022,928	89	396.498,567 545.082,931	66.048	89	396.498,567 545.082,931	90	396.530,075 545.101,928	36.792	90	396.530,075 545.101,928	91	396.528,63 545.152,723	50.816
91	396.528,63 545.152,723	92	396.543,77 545.157,839	15.981	92	396.543,77 545.157,839	93	396.542,409 545.169,788	12.026	93	396.542,409 545.169,788	94	396.542,423 545.171,63	1.842
94	396.542,423 545.171,63	95	396.542,512 545.183,036	11.406	95	396.542,512 545.183,036	96	396.546,458 545.201,224	18.611	96	396.546,458 545.201,224	97	396.551,867 545.212,509	12.514
97	396.551,867 545.212,509	98	396.557,854 545.222,931	12.019	98	396.557,854 545.222,931	99	396.566,382 545.243,083	21.882	99	396.566,382 545.243,083	100	396.544,984 545.248,676	22.117
100	396.544,984 545.248,676	101	396.522,765 545.253,307	22.696	101	396.522,765 545.253,307	102	396.493,162 545.256,37	29.761	102	396.493,162 545.256,37	103	396.481,721 545.256,346	11.441
103	396.481,721 545.256,346	104	396.451,111 545.257,736	30.642	104	396.451,111 545.257,736	105	396.427,432 545.256,572	23.708	105	396.427,432 545.256,572	106	396.396,472 545.253,572	31.105
106	396.396,472 545.253,572	107	396.364,311 545.249,92	32.368	107	396.364,311 545.249,92	108	396.309,669 545.241,079	55.353	108	396.309,669 545.241,079	109	396.266,186 545.234,53	43.973
109	396.266,186 545.234,53	110	396.249,595 545.232,231	16.75	110	396.249,595 545.232,231	111	396.230,098 545.229,08	19.75	111	396.230,098 545.229,08	112	396.218,281 545.225,427	12.369
112	396.218,281 545.225,427	113	396.201,002 545.216,016	19.676	113	396.201,002 545.216,016	114	396.141,046 545.183,081	68.406	114	396.141,046 545.183,081	115	396.068,328 545.143,054	83.006
115	396.068,328 545.143,054	116	396.040,41 545.127,761	31.832	116	396.040,41 545.127,761	117	396.022,569 545.117,499	20.582	117	396.022,569 545.117,499	118	396.020,205 545.099,915	17.742

Punct început	X / Y	Punct sfârșit	X / Y	Lungime segment	Punct început	X / Y	Punct sfârșit	X / Y	Lungime segment	Punct început	X / Y	Punct sfârșit	X / Y	Lungime segment
118	396.020,205 545.099,915	119	396.012,056 545.076,503	24.79	119	396.012,056 545.076,503	120	396.010,779 545.067,113	9.476	120	396.010,779 545.067,113	121	396.013,683 545.048,305	19.031
121	396.013,683 545.048,305	122	396.010,834 545.029,231	19.286	122	396.010,834 545.029,231	123	395.999,546 544.953,668	76.401	123	395.999,546 544.953,668	124	395.998,562 544.947,473	6.273
124	395.998,562 544.947,473	125	395.994,35 544.920,963	26.843	125	395.994,35 544.920,963	126	395.988,671 544.900,124	21.599	126	395.988,671 544.900,124	127	395.978,405 544.873,286	28.734
127	395.978,405 544.873,286	128	395.966,532 544.841,109	34.298	128	395.966,532 544.841,109	129	395.956,258 544.817,87	25.409	129	395.956,258 544.817,87	130	395.954,612 544.814,147	4.071
130	395.954,612 544.814,147	131	395.946,611 544.782,084	33.046	131	395.946,611 544.782,084	132	395.945,481 544.775,955	6.232	132	395.945,481 544.775,955	133	395.940,848 544.750,813	25.565
133	395.940,848 544.750,813	134	395.941,201 544.745,756	5.069	134	395.941,201 544.745,756	135	395.950,136 544.717,499	29.636	135	395.950,136 544.717,499	136	395.950,125 544.714,215	3.284
136	395.950,125 544.714,215	137	395.949,021 544.710,033	4.325	137	395.949,021 544.710,033	138	395.945,646 544.705,256	5.849	138	395.945,646 544.705,256	139	395.921,136 544.682,177	33.666
139	395.921,136 544.682,177	140	395.915,32 544.676,698	7.99	140	395.915,32 544.676,698	141	395.910,287 544.670,77	7.776	141	395.910,287 544.670,77	142	395.894,231 544.648,793	27.217
142	395.894,231 544.648,793	143	395.885,709 544.638,517	13.35	143	395.885,709 544.638,517	144	395.883,772 544.636,181	3.035	144	395.883,772 544.636,181	145	395.873,926 544.627,937	12.842
145	395.873,926 544.627,937	146	395.857,581 544.615,351	20.629	146	395.857,581 544.615,351	147	395.841,885 544.596,439	24.577	147	395.841,885 544.596,439	148	395.822,119 544.574,344	29.646
148	395.822,119 544.574,344	149	395.815,115 544.564,74	11.887	149	395.815,115 544.564,74	150	395.812,573 544.561,253	4.315	150	395.812,573 544.561,253	151	395.807,547 544.549,783	12.523
151	395.807,547 544.549,783	152	395.766,583 544.477,45	83.127	152	395.766,583 544.477,45	153	395.757,922 544.462,919	16.916	153	395.757,922 544.462,919	154	395.744,248 544.439,977	26.708
154	395.744,248 544.439,977	155	395.740,766 544.435,342	5.797	155	395.740,766 544.435,342	156	395.737,467 544.430,952	5.491	156	395.737,467 544.430,952	157	395.730,403 544.423,455	10.301
157	395.730,403 544.423,455	158	395.727,607 544.419,438	4.894	158	395.727,607 544.419,438	159	395.723,941 544.411,533	8.714	159	395.723,941 544.411,533	160	395.719,517 544.399,757	12.58
160	395.719,517 544.399,757	161	395.713,292 544.383,187	17.701	161	395.713,292 544.383,187	162	395.711,479 544.378,363	5.153	162	395.711,479 544.378,363	163	395.709,906 544.373,247	5.352
163	395.709,906 544.373,247	164	395.704,246 544.354,842	19.256	164	395.704,246 544.354,842	165	395.685,769 544.311,728	46.906	165	395.685,769 544.311,728	166	395.669,083 544.277,583	38.004
166	395.669,083 544.277,583	167	395.647,983 544.240,664	42.523	167	395.647,983 544.240,664	168	395.636,341 544.225,201	19.356	168	395.636,341 544.225,201	169	395.613,415 544.197,575	35.9
169	395.613,415 544.197,575	170	395.608,187 544.191,276	8.186	170	395.608,187 544.191,276	171	395.605,852 544.188,108	3.936	171	395.605,852 544.188,108	172	395.598,743 544.178,462	11.983
172	395.598,743 544.178,462	173	395.596,743 544.175,749	3.371	173	395.596,743 544.175,749	174	395.584,605 544.158,487	21.102	174	395.584,605 544.158,487	175	395.577,225 544.147,99	12.832
175	395.577,225 544.147,99	176	395.525,885 544.090,995	76.709	176	395.525,885 544.090,995	177	395.520,343 544.086,379	7.213	177	395.520,343 544.086,379	178	395.516,958 544.077,149	9.831
178	395.516,958 544.077,149	179	395.520,831 544.071,565	6.796	179	395.520,831 544.071,565	180	395.534,747 544.066,499	14.809	180	395.534,747 544.066,499	181	395.539,494 544.076,408	10.987
181	395.539,494 544.076,408	182	395.544,373 544.077,438	4.987	182	395.544,373 544.077,438	183	395.549,528 544.070,638	8.533	183	395.549,528 544.070,638	184	395.557,361 544.077,575	10.463
184	395.557,361 544.077,575	185	395.559,312 544.093,156	15.703	185	395.559,312 544.093,156	186	395.569,496 544.119,46	28.207	186	395.569,496 544.119,46	187	395.593,203 544.140,776	31.881
187	395.593,203 544.140,776	188	395.622,285 544.127,848	31.826	188	395.622,285 544.127,848	189	395.670,047 544.127,466	47.764	189	395.670,047 544.127,466	190	395.709,209 544.125,576	39.208
190	395.709,209 544.125,576	191	395.722,494 544.123,09	13.516	191	395.722,494 544.123,09	192	395.764,598 544.116,792	42.572	192	395.764,598 544.116,792	193	395.814,094 544.117,186	49.498
193	395.814,094 544.117,186	194	395.846,204 544.117,188	32.11	194	395.846,204 544.117,188	195	395.854,277 544.139,122	23.372	195	395.854,277 544.139,122	196	395.856,678 544.166,19	27.174
196	395.856,678 544.166,19	197	395.883,607 544.210,542	51.887	197	395.883,607 544.210,542	198	395.898,345 544.244,701	37.203	198	395.898,345 544.244,701	199	395.917,938 544.264,267	27.69
199	395.917,938 544.264,267	200	395.930,503 544.288,151	26.987	200	395.930,503 544.288,151	201	395.940,656 544.301,708	16.937	201	395.940,656 544.301,708	1	395.946,733 544.315,133	14.736

** Lungimile segmentelor sunt determinate în planul de proiecție Stereo 70 și sunt rotunjite la 1 milimetru.

*** Distanța dintre puncte este formată din segmente cumulate ce sunt mai mici decât valoarea 1 milimetru.

**DATE DESPRE IMOBILUL NR. 7089**

Oficiul de Cadastru și Publicitate Imobiliară ALBA
Biroul de Cadastru și Publicitate Imobiliară Aiud

A. Partea I. Descrierea imobilului

TEREN Extravilan

Adresa: Jud. Alba

Nr. Crt	Nr cadastral Nr. topografic	Suprafața* (mp)	Observații / Referințe
A1		4.850	Sector cadastral:11 Teren neimprejmuit;

B. Partea II. Proprietari și acte

Inscrieri privitoare la dreptul de proprietate și alte drepturi reale		Referințe
1 / 01/01/2023		
Act Normativ nr. 7, din 13/03/1996 emis de PARLAMENT;		
B1	Inscrierea provizorie, drept de PROPRIETATE, dobandit prin Lege, cota actuala 1/1 1) UAT MIRSLĂU, CIF:9999999999999	A1

C. Partea III. SARCINI .

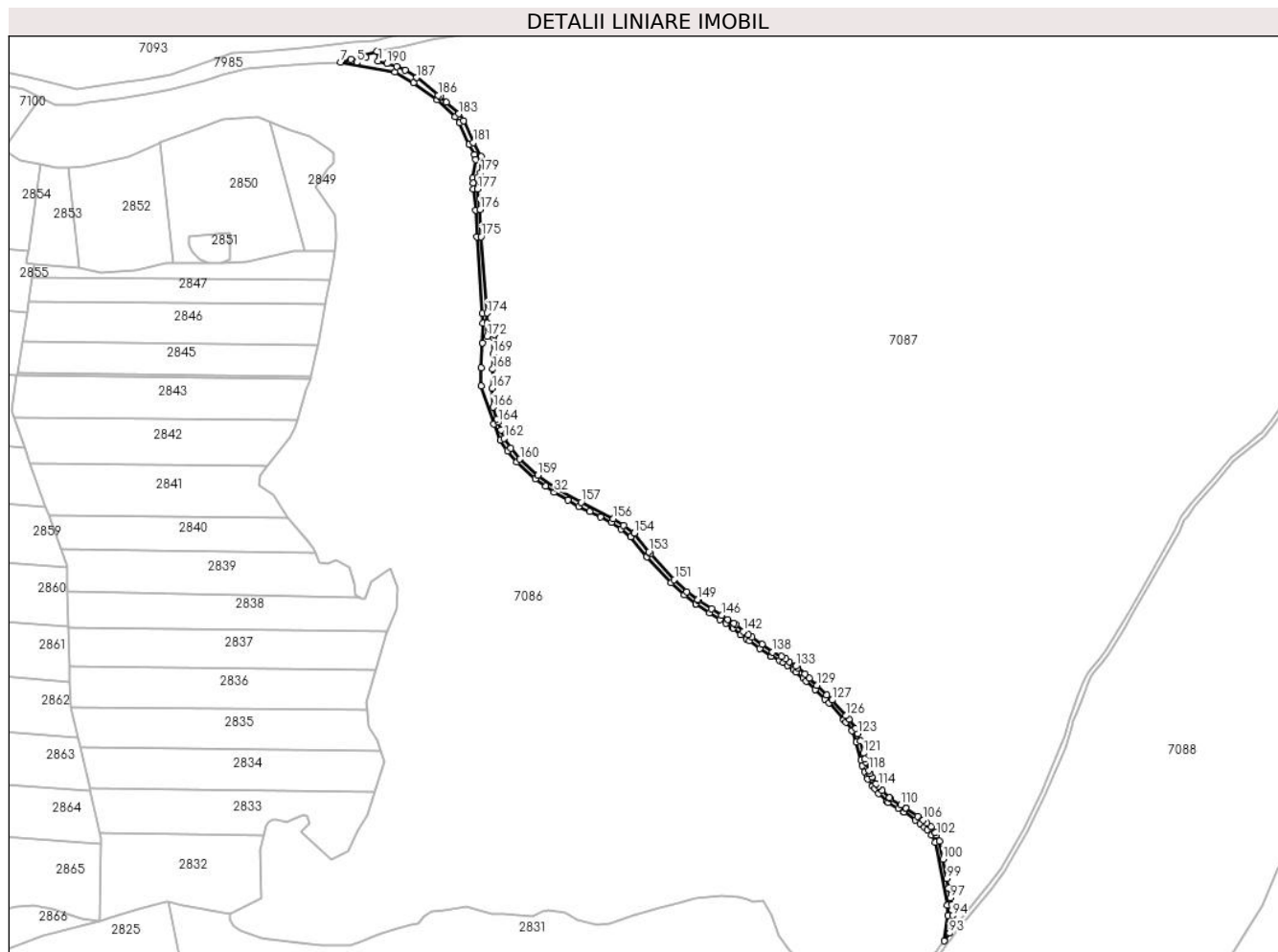
Inscrieri privind dezmembramintele dreptului de proprietate, drepturi reale de garanție și sarcini	Referințe
NU SUNT	

Anexa Nr. 1 La Partea I

Teren

Nr cadastral	Suprafața (mp)*	Observații / Referințe
	4.850	

* Suprafața este determinată în planul de proiecție Stereo 70.



Date referitoare la teren

Crt	Categorie folosință	Intravilan	Suprafața (mp)	Tarla	Parcelă	Nr. topo	Observații / Referințe
1	drum	NU	4.850	-	-	-	

Lungime Segmente

1) Valorile lungimilor segmentelor sunt obținute din proiecție în plan.

Punct început	X / Y	Punct sfârșit	X / Y	Lungime segment
1	395.077,659 544.979,348	2	395.076,689 544.988,301	9.005
4	395.066,549 544.982,462	5	395.058,339 544.978,185	9.257
7	395.043,698 544.978,309	8	395.093,177 544.969,323	50.288
10	395.131,442 544.944,023	11	395.148,183 544.928,728	22.676
13	395.160,801 544.903,592	14	395.165,769 544.894,206	10.62
16	395.164,036 544.872,79	17	395.164,159 544.868,409	4.383

Punct început	X / Y	Punct sfârșit	X / Y	Lungime segment
2	395.076,689 544.988,301	3	395.063,489 544.984,461	13.747
5	395.058,339 544.978,185	6	395.053,069 544.980,969	5.96
8	395.093,177 544.969,323	9	395.109,896 544.959,844	19.219
11	395.148,183 544.928,728	12	395.151,943 544.923,131	6.743
14	395.165,769 544.894,206	15	395.166,331 544.889,503	4.736
17	395.164,159 544.868,409	18	395.164,321 544.862,652	5.759

Punct început	X / Y	Punct sfârșit	X / Y	Lungime segment
3	395.063,489 544.984,461	4	395.066,549 544.982,462	3.655
6	395.053,069 544.980,969	7	395.043,698 544.978,309	9.741
9	395.109,896 544.959,844	10	395.131,442 544.944,023	26.731
12	395.151,943 544.923,131	13	395.160,801 544.903,592	21.453
15	395.166,331 544.889,503	16	395.164,036 544.872,79	16.87
18	395.164,321 544.862,652	19	395.166,646 544.843,841	18.954

Punct început	X / Y	Punct sfârșit	X / Y	Lungime segment	Punct început	X / Y	Punct sfârșit	X / Y	Lungime segment	Punct început	X / Y	Punct sfârșit	X / Y	Lungime segment
19	395.166,646 544.843,841	20	395.167,475 544.819,194	24.661	20	395.167,475 544.819,194	21	395.172,795 544.749,74	69.657	21	395.172,795 544.749,74	22	395.173,002 544.740,53	9.212
22	395.173,002 544.740,53	23	395.172,74 544.722,863	17.669	23	395.172,74 544.722,863	24	395.171,445 544.699,966	22.934	24	395.171,445 544.699,966	25	395.171,489 544.683,343	16.623
25	395.171,489 544.683,343	26	395.183,278 544.648,93	36.376	26	395.183,278 544.648,93	27	395.189,059 544.634,058	15.956	27	395.189,059 544.634,058	28	395.195,473 544.624,277	11.696
28	395.195,473 544.624,277	29	395.204,078 544.614,12	13.312	29	395.204,078 544.614,12	30	395.220,836 544.599,021	22.557	30	395.220,836 544.599,021	31	395.230,47 544.592,142	11.838
31	395.230,47 544.592,142	32	395.238,181 544.586,635	9.476	32	395.238,181 544.586,635	33	395.250,483 544.579,507	14.218	33	395.250,483 544.579,507	34	395.260,459 544.573,727	11.529
34	395.260,459 544.573,727	35	395.270,366 544.568,953	10.997	35	395.270,366 544.568,953	36	395.280,316 544.564,157	11.046	36	395.280,316 544.564,157	37	395.290,125 544.559,029	11.069
37	395.290,125 544.559,029	38	395.299,258 544.553,047	10.918	38	395.299,258 544.553,047	39	395.308,042 544.546,247	11.108	39	395.308,042 544.546,247	40	395.322,129 544.528,563	22.609
40	395.322,129 544.528,563	41	395.322,698 544.527,848	0.914	41	395.322,698 544.527,848	42	395.344,855 544.504,137	32.452	42	395.344,855 544.504,137	43	395.356,641 544.493,107	16.142
43	395.356,641 544.493,107	44	395.367,297 544.485,177	13.283	44	395.367,297 544.485,177	45	395.367,411 544.485,103	0.136	45	395.367,411 544.485,103	46	395.379,969 544.476,896	15.002
46	395.379,969 544.476,896	47	395.389,102 544.470,928	10.91	47	395.389,102 544.470,928	48	395.394,639 544.467,309	6.615	48	395.394,639 544.467,309	49	395.400,376 544.463,561	6.853
49	395.400,376 544.463,561	50	395.401,335 544.462,934	1.146	50	395.401,335 544.462,934	51	395.408,06 544.456,77	9.123	51	395.408,06 544.456,77	52	395.413,33 544.453,154	6.391
52	395.413,33 544.453,154	53	395.416,014 544.451,312	3.255	53	395.416,014 544.451,312	54	395.425,77 544.444,309	12.009	54	395.425,77 544.444,309	55	395.435,216 544.437,53	11.627
55	395.435,216 544.437,53	56	395.435,793 544.437,232	0.649	56	395.435,793 544.437,232	57	395.443,429 544.433,293	8.592	57	395.443,429 544.433,293	58	395.446,814 544.431,547	3.809
58	395.446,814 544.431,547	59	395.450,877 544.428,686	4.969	59	395.450,877 544.428,686	60	395.456,151 544.424,973	6.45	60	395.456,151 544.424,973	61	395.458,553 544.422,885	3.183
61	395.458,553 544.422,885	62	395.464,948 544.417,323	8.475	62	395.464,948 544.417,323	63	395.468,075 544.414,603	4.144	63	395.468,075 544.414,603	64	395.475,83 544.407,009	10.854
64	395.475,83 544.407,009	65	395.484,778 544.398,245	12.525	65	395.484,778 544.398,245	66	395.488,501 544.394,6	5.21	66	395.488,501 544.394,6	67	395.502,16 544.379,426	20.416
67	395.502,16 544.379,426	68	395.503,952 544.377,435	2.679	68	395.503,952 544.377,435	69	395.509,571 544.369,622	9.624	69	395.509,571 544.369,622	70	395.513,43 544.358,899	11.396
70	395.513,43 544.358,899	71	395.517,593 544.342,487	16.932	71	395.517,593 544.342,487	72	395.519,139 544.337,798	4.937	72	395.519,139 544.337,798	73	395.521,03 544.332,061	6.041
73	395.521,03 544.332,061	74	395.523,37 544.327,029	5.549	74	395.523,37 544.327,029	75	395.524,167 544.325,314	1.891	75	395.524,167 544.325,314	76	395.528,509 544.318,916	7.732
76	395.528,509 544.318,916	77	395.530,495 544.316,513	3.117	77	395.530,495 544.316,513	78	395.533,964 544.312,318	5.444	78	395.533,964 544.312,318	79	395.541,402 544.305,414	10.148
79	395.541,402 544.305,414	80	395.542,54 544.304,357	1.553	80	395.542,54 544.304,357	81	395.551,843 544.298,74	10.867	81	395.551,843 544.298,74	82	395.556,78 544.295,759	5.767
82	395.556,78 544.295,759	83	395.557,139 544.295,542	0.419	83	395.557,139 544.295,542	84	395.567,594 544.287,986	12.9	84	395.567,594 544.287,986	85	395.571,801 544.284,945	5.191
85	395.571,801 544.284,945	86	395.575,727 544.281,556	5.186	86	395.575,727 544.281,556	87	395.578,562 544.279,11	3.744	87	395.578,562 544.279,11	88	395.582,196 544.274,295	6.032
88	395.582,196 544.274,295	89	395.585,444 544.267,804	7.258	89	395.585,444 544.267,804	90	395.596,689 544.210,42	58.475	90	395.596,689 544.210,42	91	395.597,172 544.201,26	9.173
91	395.597,172 544.201,26	92	395.593,497 544.178,086	23.464	92	395.593,497 544.178,086	93	395.598,657 544.185,088	8.698	93	395.598,657 544.185,088	94	395.601,189 544.201,05	16.162
94	395.601,189 544.201,05	95	395.600,907 544.206,397	5.354	95	395.600,907 544.206,397	96	395.600,669 544.210,912	4.521	96	395.600,669 544.210,912	97	395.599,451 544.217,13	6.336
97	395.599,451 544.217,13	98	395.597,687 544.226,128	9.169	98	395.597,687 544.226,128	99	395.595,976 544.234,857	8.895	99	395.595,976 544.234,857	100	395.592,551 544.252,334	17.809
100	395.592,551 544.252,334	101	395.589,264 544.269,107	17.092	101	395.589,264 544.269,107	102	395.586,586 544.274,461	5.986	102	395.586,586 544.274,461	103	395.585,61 544.276,413	2.182
103	395.585,61 544.276,413	104	395.581,498 544.281,859	6.824	104	395.581,498 544.281,859	105	395.577,553 544.285,264	5.211	105	395.577,553 544.285,264	106	395.574,284 544.288,086	4.319
106	395.574,284 544.288,086	107	395.569,362 544.291,643	6.073	107	395.569,362 544.291,643	108	395.559,348 544.298,881	12.356	108	395.559,348 544.298,881	109	395.558,482 544.299,404	1.012
109	395.558,482 544.299,404	110	395.554,24 544.301,965	4.955	110	395.554,24 544.301,965	111	395.544,96 544.307,569	10.841	111	395.544,96 544.307,569	112	395.543,72 544.308,72	1.692
112	395.543,72 544.308,72	113	395.536,878 544.315,07	9.335	113	395.536,878 544.315,07	114	395.533,559 544.319,085	5.209	114	395.533,559 544.319,085	115	395.531,712 544.321,319	2.899
115	395.531,712 544.321,319	116	395.527,658 544.327,293	7.22	116	395.527,658 544.327,293	117	395.526,207 544.330,414	3.442	117	395.526,207 544.330,414	118	395.524,756 544.333,535	3.442

Punct început	X / Y	Punct sfârșit	X / Y	Lungime segment	Punct început	X / Y	Punct sfârșit	X / Y	Lungime segment	Punct început	X / Y	Punct sfârșit	X / Y	Lungime segment
118	395.524,756 544.333,535	119	395.522,388 544.340,72	7.565	119	395.522,388 544.340,72	120	395.521,436 544.343,606	3.039	120	395.521,436 544.343,606	121	395.520,057 544.349,043	5.609
121	395.520,057 544.349,043	122	395.517,26 544.360,071	11.37 7	122	395.517,26 544.360,071	123	395.514,839 544.366,798	7.149	123	395.514,839 544.366,798	124	395.513,145 544.371,503	5.001
124	395.513,145 544.371,503	125	395.507,072 544.379,949	10.40 3	125	395.507,072 544.379,949	126	395.504,17 544.383,172	4.337	126	395.504,17 544.383,172	127	395.491,389 544.397,37	19.10 3
127	395.491,389 544.397,37	128	395.486,502 544.402,156	6.84	128	395.486,502 544.402,156	129	395.477,621 544.410,853	12.43	129	395.477,621 544.410,853	130	395.470,789 544.417,544	9.563
130	395.470,789 544.417,544	131	395.466,675 544.421,122	5.452	131	395.466,675 544.421,122	132	395.460,264 544.426,698	8.497	132	395.460,264 544.426,698	133	395.458,621 544.428,126	2.177
133	395.458,621 544.428,126	134	395.452,51 544.432,429	7.474	134	395.452,51 544.432,429	135	395.448,892 544.434,976	4.425	135	395.448,892 544.434,976	136	395.445,052 544.436,957	4.321
136	395.445,052 544.436,957	137	395.437,435 544.440,886	8.571	137	395.437,435 544.440,886	138	395.437,31 544.440,951	0.141	138	395.437,31 544.440,951	139	395.427,468 544.448,014	12.11 4
139	395.427,468 544.448,014	140	395.418,312 544.454,586	11.27	140	395.418,312 544.454,586	141	395.415,099 544.456,791	3.897	141	395.415,099 544.456,791	142	395.410,555 544.459,909	5.511
142	395.410,555 544.459,909	143	395.403,797 544.466,103	9.167	143	395.403,797 544.466,103	144	395.402,006 544.467,274	2.14	144	395.402,006 544.467,274	145	395.396,314 544.470,994	6.8
145	395.396,314 544.470,994	146	395.390,773 544.474,614	6.619	146	395.390,773 544.474,614	147	395.381,609 544.480,603	10.94 7	147	395.381,609 544.480,603	148	395.369,587 544.488,459	14.36 1
148	395.369,587 544.488,459	149	395.369,143 544.488,79	0.554	149	395.369,143 544.488,79	150	395.359,21 544.496,181	12.38 1	150	395.359,21 544.496,181	151	395.347,686 544.506,966	15.78 3
151	395.347,686 544.506,966	152	395.325,755 544.530,436	32.12 2	152	395.325,755 544.530,436	153	395.324,281 544.532,362	2.425	153	395.324,281 544.532,362	154	395.311,194 544.549,458	21.53
154	395.311,194 544.549,458	155	395.301,514 544.556,35	11.88 3	155	395.301,514 544.556,35	156	395.292,143 544.562,488	11.20 2	156	395.292,143 544.562,488	157	395.262,754 544.577,653	33.07 1
157	395.262,754 544.577,653	158	395.240,316 544.590,026	25.62 3	158	395.240,316 544.590,026	159	395.223,345 544.602,145	20.85 4	159	395.223,345 544.602,145	160	395.206,956 544.616,911	22.06
160	395.206,956 544.616,911	161	395.198,683 544.626,676	12.79 8	161	395.198,683 544.626,676	162	395.192,635 544.635,899	11.02 9	162	395.192,635 544.635,899	163	395.189,795 544.643,204	7.838
163	395.189,795 544.643,204	164	395.187,035 544.650,303	7.617	164	395.187,035 544.650,303	165	395.185,963 544.653,434	3.309	165	395.185,963 544.653,434	166	395.182,289 544.664,159	11.33 7
166	395.182,289 544.664,159	167	395.181,707 544.681,535	17.38 6	167	395.181,707 544.681,535	168	395.182,088 544.698,778	17.24 7	168	395.182,088 544.698,778	169	395.182,381 544.712,92	14.14 5
169	395.182,381 544.712,92	170	395.182,772 544.727,439	14.52 4	170	395.182,772 544.727,439	171	395.183,587 544.730,448	3.117	171	395.183,587 544.730,448	172	395.176,829 544.728,834	6.948
172	395.176,829 544.728,834	173	395.177,003 544.740,545	11.71 2	173	395.177,003 544.740,545	174	395.176,792 544.749,938	9.395	174	395.176,792 544.749,938	175	395.171,47 544.819,414	69.68
175	395.171,47 544.819,414	176	395.170,638 544.844,154	24.75 4	176	395.170,638 544.844,154	177	395.168,314 544.862,954	18.94 3	177	395.168,314 544.862,954	178	395.168,043 544.872,573	9.623
178	395.168,043 544.872,573	179	395.171,159 544.877,858	6.135	179	395.171,159 544.877,858	180	395.171,369 544.892,547	14.69 1	180	395.171,369 544.892,547	181	395.164,394 544.905,355	14.58 4
181	395.164,394 544.905,355	182	395.155,449 544.925,086	21.66 4	182	395.155,449 544.925,086	183	395.151,235 544.931,357	7.555	183	395.151,235 544.931,357	184	395.139,791 544.941,813	15.50 1
184	395.139,791 544.941,813	185	395.134,057 544.947,051	7.766	185	395.134,057 544.947,051	186	395.132,567 544.948,267	1.923	186	395.132,567 544.948,267	187	395.112,786 544.964,41	25.53 2
187	395.112,786 544.964,41	188	395.102,424 544.971,111	12.34	188	395.102,424 544.971,111	189	395.094,847 544.974,529	8.312	189	395.094,847 544.974,529	190	395.085,935 544.977,028	9.256
190	395.085,935 544.977,028	1	395.077,659 544.979,348	8.595										

** Lungimile segmentelor sunt determinate în planul de proiecție Stereo 70 și sunt rotunjite la 1 milimetru.

*** Distanța dintre puncte este formată din segmente cumulate ce sunt mai mici decât valoarea 1 milimetru.

**DATE DESPRE IMOBILUL NR. 7090**

Oficiul de Cadastru și Publicitate Imobiliară ALBA
Biroul de Cadastru și Publicitate Imobiliară Aiud

A. Partea I. Descrierea imobilului

TEREN Extravilan

Adresa: Jud. Alba

Nr. Crt	Nr cadastral Nr. topografic	Suprafața* (mp)	Observații / Referințe
A1		4.687	Sector cadastral:11 Teren neimprejmuit;

B. Partea II. Proprietari și acte

Inscrieri privitoare la dreptul de proprietate și alte drepturi reale		Referințe
1 / 01/01/2023		
Act Normativ nr. 7, din 13/03/1996 emis de PARLAMENT;		
B1	Inscrierea provizorie, drept de PROPRIETATE, dobandit prin Lege, cota actuala 1/1 1) UAT MIRSLĂU, CIF:9999999999999	A1

C. Partea III. SARCINI .

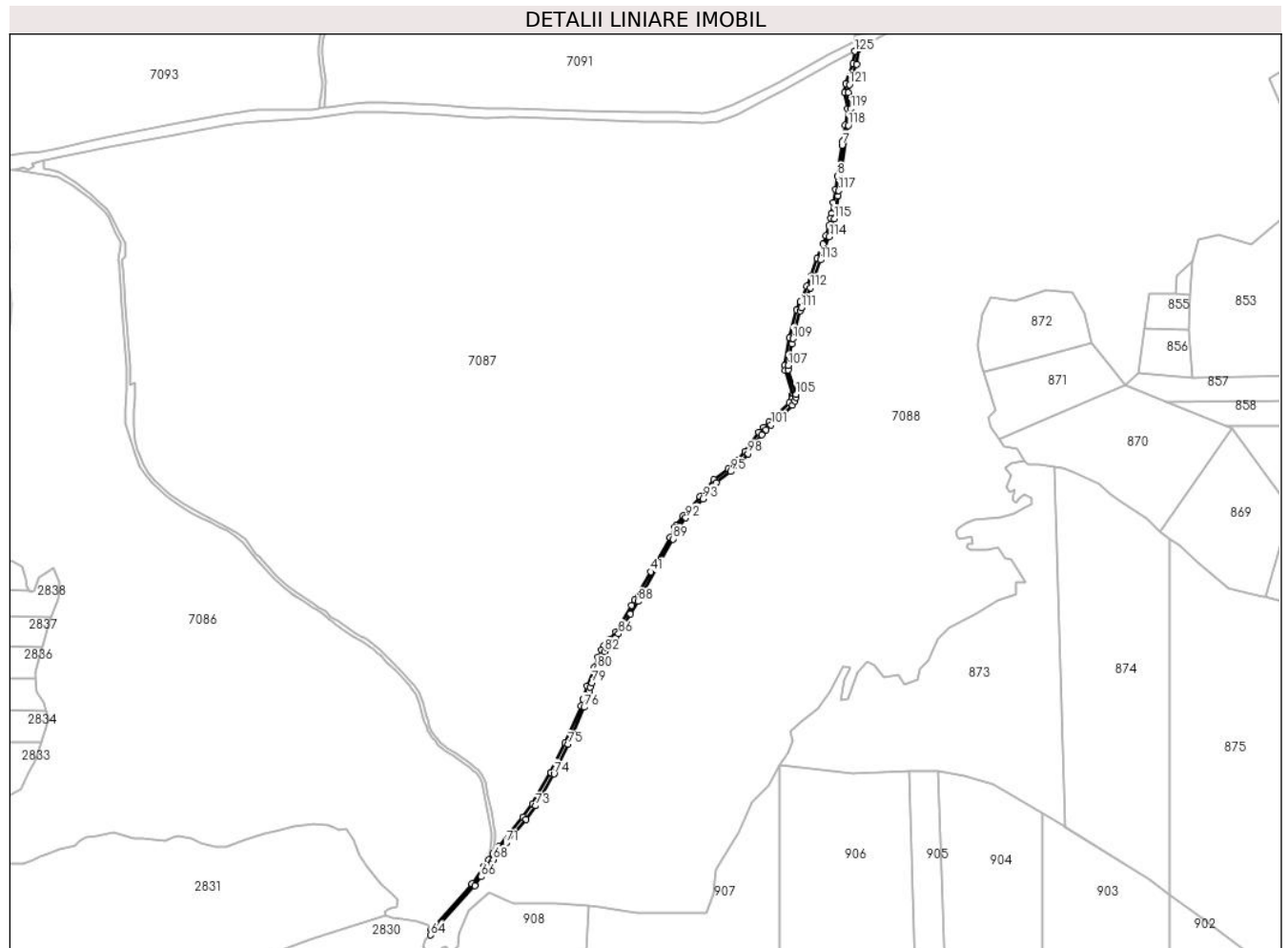
Inscrieri privind dezmembramintele dreptului de proprietate, drepturi reale de garanție și sarcini	Referințe
NU SUNT	

Anexa Nr. 1 La Partea I

Teren

Nr cadastral	Suprafața (mp)*	Observații / Referințe
	4.687	

* Suprafața este determinată în planul de proiecție Stereo 70.



Date referitoare la teren

Crt	Categorie folosință	Intravilan	Suprafața (mp)	Tarla	Parcelă	Nr. topo	Observații / Referințe
1	drum	NU	4.687	-	-	-	

Lungime Segmente

1) Valorile lungimilor segmentelor sunt obținute din proiecție în plan.

Punct început	X / Y	Punct sfârșit	X / Y	Lungime segment
1	396.016,294 545.100,848	2	396.008,146 545.077,439	24.787
4	396.009,662 545.048,14	5	396.006,879 545.029,543	18.804
7	396.003,369 545.006,078	8	395.998,034 544.970,425	36.05
10	395.993,3 544.939,778	11	395.991,313 544.927,316	12.619
13	395.988,111 544.913,285	14	395.984,864 544.901,368	12.351
16	395.974,66 544.874,693	17	395.967,282 544.854,697	21.314
2	396.008,146 545.077,439	3	396.006,738 545.067,076	10.458
5	396.006,879 545.029,543	6	396.003,915 545.009,729	20.034
8	395.998,034 544.970,425	9	395.995,699 544.954,816	15.783
11	395.991,313 544.927,316	12	395.990,434 544.921,805	5.581
14	395.984,864 544.901,368	15	395.981,114 544.891,566	10.495
17	395.967,282 544.854,697	18	395.962,822 544.842,611	12.883
3	396.006,738 545.067,076	4	396.009,662 545.048,14	19.16
6	396.003,915 545.009,729	7	396.003,369 545.006,078	3.692
9	395.995,699 544.954,816	10	395.993,3 544.939,778	15.228
12	395.990,434 544.921,805	13	395.988,111 544.913,285	8.831
15	395.981,114 544.891,566	16	395.974,66 544.874,693	18.065
18	395.962,822 544.842,611	19	395.954,858 544.824,595	19.698

Punct început	X / Y	Punct sfârșit	X / Y	Lungime segment	Punct început	X / Y	Punct sfârșit	X / Y	Lungime segment	Punct început	X / Y	Punct sfârșit	X / Y	Lungime segment
19	395.954,858 544.824,595	20	395.950,815 544.815,449	10.0	20	395.950,815 544.815,449	21	395.942,7 544.782,932	33.51 4	21	395.942,7 544.782,932	22	395.936,823 544.751,04	32.42 9
22	395.936,823 544.751,04	23	395.937,244 544.745,003	6.052	23	395.937,244 544.745,003	24	395.946,134 544.716,888	29.48 7	24	395.946,134 544.716,888	25	395.946,127 544.714,741	2.147
25	395.946,127 544.714,741	26	395.945,338 544.711,752	3.091	26	395.945,338 544.711,752	27	395.942,591 544.707,865	4.76	27	395.942,591 544.707,865	28	395.918,408 544.685,103	33.21
28	395.918,408 544.685,103	29	395.912,415 544.679,457	8.234	29	395.912,415 544.679,457	30	395.907,143 544.673,247	8.146	30	395.907,143 544.673,247	31	395.891,073 544.651,252	27.24
31	395.891,073 544.651,252	32	395.882,512 544.640,928	13.41 2	32	395.882,512 544.640,928	33	395.880,925 544.639,014	2.486	33	395.880,925 544.639,014	34	395.871,421 544.631,056	12.39 6
34	395.871,421 544.631,056	35	395.854,788 544.618,248	20.99 3	35	395.854,788 544.618,248	36	395.838,855 544.599,051	24.94 8	36	395.838,855 544.599,051	37	395.819,005 544.576,862	29.77 2
37	395.819,005 544.576,862	38	395.811,468 544.566,527	12.79 1	38	395.811,468 544.566,527	39	395.809,084 544.563,257	4.047	39	395.809,084 544.563,257	40	395.803,968 544.551,582	12.74 7
40	395.803,968 544.551,582	41	395.781,511 544.511,926	45.57 3	41	395.781,511 544.511,926	42	395.762,987 544.479,214	37.59 3	42	395.762,987 544.479,214	43	395.759,291 544.473,016	7.216
43	395.759,291 544.473,016	44	395.740,922 544.442,209	35.86 8	44	395.740,922 544.442,209	45	395.734,48 544.433,636	10.72 4	45	395.734,48 544.433,636	46	395.727,288 544.425,981	10.50 4
46	395.727,288 544.425,981	47	395.724,125 544.421,437	5.536	47	395.724,125 544.421,437	48	395.720,249 544.413,08	9.212	48	395.720,249 544.413,08	49	395.715,866 544.401,411	12.46 5
49	395.715,866 544.401,411	50	395.707,683 544.379,625	23.27 2	50	395.707,683 544.379,625	51	395.702,994 544.364,379	15.95 1	51	395.702,994 544.364,379	52	395.700,485 544.356,222	8.534
52	395.700,485 544.356,222	53	395.682,143 544.313,422	46.56 5	53	395.682,143 544.313,422	54	395.665,546 544.279,455	37.80 5	54	395.665,546 544.279,455	55	395.644,647 544.242,884	42.12 1
55	395.644,647 544.242,884	56	395.633,202 544.227,683	19.02 8	56	395.633,202 544.227,683	57	395.605,036 544.193,742	44.10 6	57	395.605,036 544.193,742	58	395.598,657 544.185,088	10.75 1
58	395.598,657 544.185,088	59	395.593,497 544.178,086	8.698	59	395.593,497 544.178,086	60	395.587,977 544.170,237	9.596	60	395.587,977 544.170,237	61	395.573,953 544.150,291	24.38 3
61	395.573,953 544.150,291	62	395.526,563 544.097,722	70.77 6	62	395.526,563 544.097,722	63	395.527,273 544.094,995	2.818	63	395.527,273 544.094,995	64	395.525,885 544.090,995	4.234
64	395.525,885 544.090,995	65	395.577,225 544.147,99	76.70 9	65	395.577,225 544.147,99	66	395.584,605 544.158,487	12.83 2	66	395.584,605 544.158,487	67	395.596,743 544.175,749	21.10 2
67	395.596,743 544.175,749	68	395.598,743 544.178,462	3.371	68	395.598,743 544.178,462	69	395.605,852 544.188,108	11.98 3	69	395.605,852 544.188,108	70	395.608,187 544.191,276	3.936
70	395.608,187 544.191,276	71	395.613,415 544.197,575	8.186	71	395.613,415 544.197,575	72	395.636,341 544.225,201	35.9	72	395.636,341 544.225,201	73	395.647,983 544.240,664	19.35 6
73	395.647,983 544.240,664	74	395.669,083 544.277,583	42.52 3	74	395.669,083 544.277,583	75	395.685,769 544.311,728	38.00 4	75	395.685,769 544.311,728	76	395.704,246 544.354,842	46.90 6
76	395.704,246 544.354,842	77	395.709,906 544.373,247	19.25 6	77	395.709,906 544.373,247	78	395.711,479 544.378,363	5.352	78	395.711,479 544.378,363	79	395.713,292 544.383,187	5.153
79	395.713,292 544.383,187	80	395.719,517 544.399,757	17.70 1	80	395.719,517 544.399,757	81	395.723,941 544.411,533	12.58	81	395.723,941 544.411,533	82	395.727,607 544.419,438	8.714
82	395.727,607 544.419,438	83	395.730,403 544.423,455	4.894	83	395.730,403 544.423,455	84	395.737,467 544.430,952	10.30 1	84	395.737,467 544.430,952	85	395.740,766 544.435,342	5.491
85	395.740,766 544.435,342	86	395.744,248 544.439,977	5.797	86	395.744,248 544.439,977	87	395.757,922 544.462,919	26.70 8	87	395.757,922 544.462,919	88	395.766,583 544.477,45	16.91 6
88	395.766,583 544.477,45	89	395.807,547 544.549,783	83.12 7	89	395.807,547 544.549,783	90	395.812,573 544.561,253	12.52 3	90	395.812,573 544.561,253	91	395.815,115 544.564,74	4.315
91	395.815,115 544.564,74	92	395.822,119 544.574,344	11.88 7	92	395.822,119 544.574,344	93	395.841,885 544.596,439	29.64 6	93	395.841,885 544.596,439	94	395.857,581 544.615,351	24.57 7
94	395.857,581 544.615,351	95	395.873,926 544.627,937	20.62 9	95	395.873,926 544.627,937	96	395.883,772 544.636,181	12.84 2	96	395.883,772 544.636,181	97	395.885,709 544.638,517	3.035
97	395.885,709 544.638,517	98	395.894,231 544.648,793	13.35	98	395.894,231 544.648,793	99	395.910,287 544.670,77	27.21 7	99	395.910,287 544.670,77	100	395.915,32 544.676,698	7.776
100	395.915,32 544.676,698	101	395.921,136 544.682,177	7.99	101	395.921,136 544.682,177	102	395.945,646 544.705,256	33.66 6	102	395.945,646 544.705,256	103	395.949,021 544.710,033	5.849
103	395.949,021 544.710,033	104	395.950,125 544.714,215	4.325	104	395.950,125 544.714,215	105	395.950,136 544.717,499	3.284	105	395.950,136 544.717,499	106	395.941,201 544.745,756	29.63 6
106	395.941,201 544.745,756	107	395.940,848 544.750,813	5.069	107	395.940,848 544.750,813	108	395.945,481 544.775,955	25.56 5	108	395.945,481 544.775,955	109	395.946,611 544.782,084	6.232
109	395.946,611 544.782,084	110	395.954,612 544.814,147	33.04 6	110	395.954,612 544.814,147	111	395.956,258 544.817,87	4.071	111	395.956,258 544.817,87	112	395.966,532 544.841,109	25.40 9
112	395.966,532 544.841,109	113	395.978,405 544.873,286	34.29 8	113	395.978,405 544.873,286	114	395.988,671 544.900,124	28.73 4	114	395.988,671 544.900,124	115	395.994,35 544.920,963	21.59 9
115	395.994,35 544.920,963	116	395.998,562 544.947,473	26.84 3	116	395.998,562 544.947,473	117	395.999,546 544.953,668	6.273	117	395.999,546 544.953,668	118	396.010,834 545.029,231	76.40 1

Punct început	X / Y	Punct sfârșit	X / Y	Lungime segment	Punct început	X / Y	Punct sfârșit	X / Y	Lungime segment	Punct început	X / Y	Punct sfârșit	X / Y	Lungime segment
118	396.010,834 545.029,231	119	396.013,683 545.048,305	19.286	119	396.013,683 545.048,305	120	396.010,779 545.067,113	19.031	120	396.010,779 545.067,113	121	396.012,056 545.076,503	9.476
121	396.012,056 545.076,503	122	396.020,205 545.099,915	24.79	122	396.020,205 545.099,915	123	396.022,569 545.117,499	17.742	123	396.022,569 545.117,499	124	396.019,839 545.115,929	3.149
124	396.019,839 545.115,929	125	396.018,208 545.115,088	1.835	125	396.018,208 545.115,088	1	396.016,294 545.100,848	14.368					

** Lungimile segmentelor sunt determinate în planul de proiecție Stereo 70 și sunt rotunjite la 1 milimetru.

*** Distanța dintre puncte este formată din segmente cumulate ce sunt mai mici decât valoarea 1 milimetru.